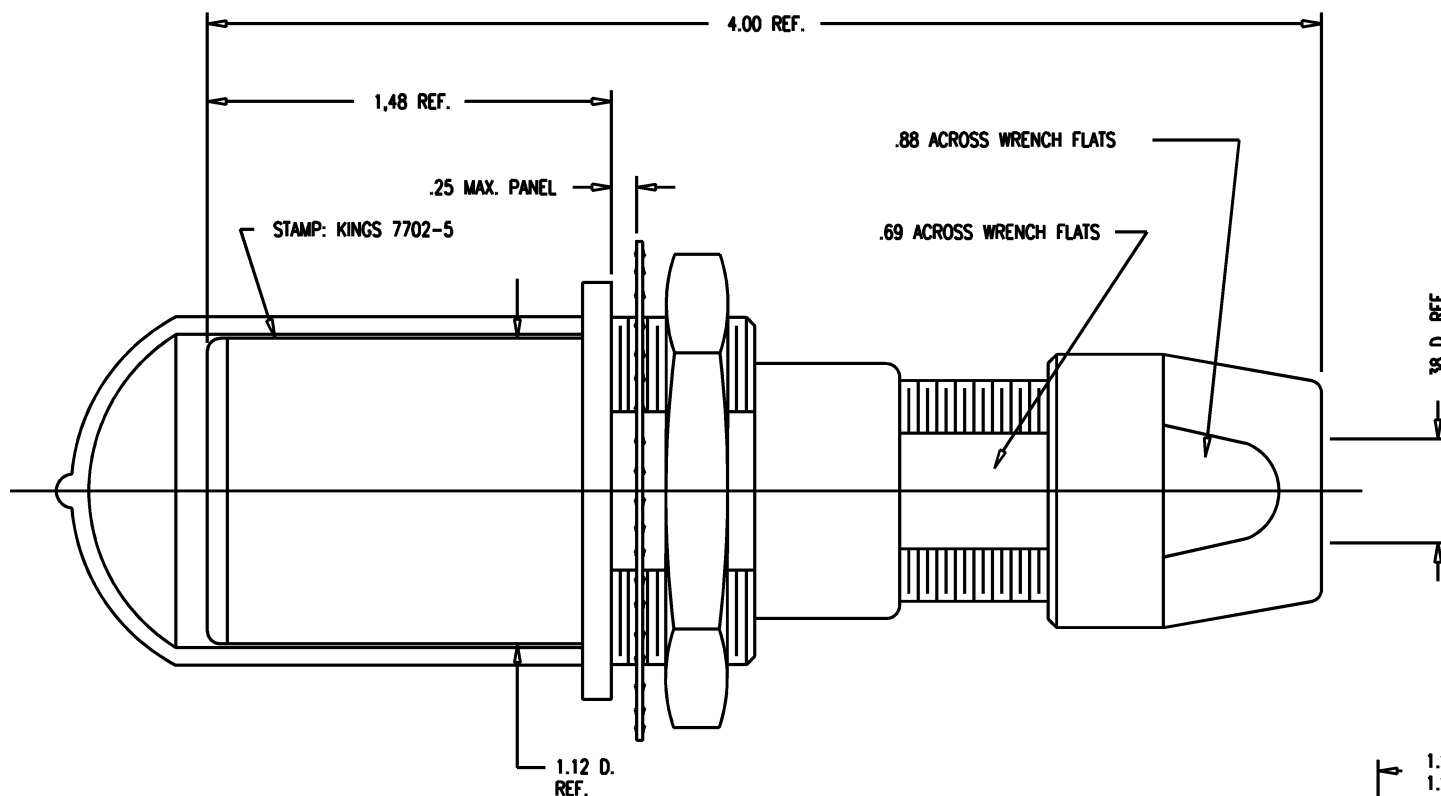


DASH NO.	M CODE	MADE FROM
----------	--------	-----------

# GSD

7702-5

REVISIONS		
ISSUE	CHANGES	
0	ER 35431 KH 04/17/95	
1	CN 37238 D KH 02/03/97	
2	CN 39206 C HVN 01/15/05	
3	CN 39531 C AM 07/12/06	



#### NOTES:

1. FOR USE WITH 730 CABLE GROUPS.
2. FOR CABLING INSTRUCTIONS SEE KAI-8010.
3. FOR CABLE TRIMMING USE KTJ-303 AND KTD-303.
4. FOR CRIMPING USE DIE KTH-2002.

#### 5. MATERIALS:

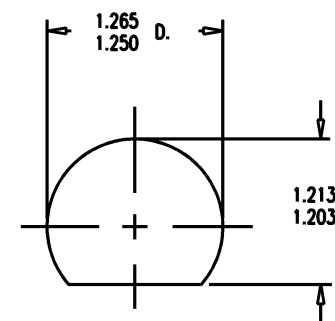
INSULATORS-TEFLON, ASTM-D-8494  
 LOCKWASHER-SPRING STEEL, PER ASTM A682  
 GASKETS-SILICONE RUBBER, ZZ-R-765  
 CAP-VINYL  
 K-GRIP SLEEVE-COMMERCIAL BRONZE, ASTM-B-135  
 CENTER CONTACT  
 OUTER CONTACT SPRING } BER. COP., ASTM-B-196  
 INSERT  
 ALL OTHER METAL PARTS-BRASS, ASTM-B16

#### 6. FINISHES:

CENTER CONTACT  
 OUTER CONTACT SPRING } GOLD PLATE PER MIL-G-45204  
 LOCKWASHER  
 NUTS  
 COLLET  
 BODIES } KINGS TARNISH RESISTANT NICKEL FINISH (TR-5)  
 ALL OTHER METAL PARTS-SILVER PLATE PER QQ-S-365

#### 7. ELECTRICAL CHARACTERISTICS:

NOMINAL IMPEDANCE: 75 OHMS  
 FREQUENCY RANGE: DC-500 MHZ  
 VOLTAGE BREAKDOWN: CENTER CONDUCTOR/INNER GROUND: 1500 VRMS  
 INNER GROUND/OUTER GROUND: 500 VRMS



MOUNTING HOLE

# GSD

SCALE 2:1	
APPROX SURFACE AREA	
USED ON	
REF: KP-8022-737-400	
JACK, BULKHEAD, TRI-LOC SERIAL DIGITAL	
DRAWN KH	DATE 04/17/95
DESIGN DW	DATE 04/18/95
APPR.	DATE
 ELECTRONICS CO., INC. ROCK HILL, SOUTH CAROLINA 29730	
7702-5	

# Mouser Electronics

Authorized Distributor

Click to View Pricing, Inventory, Delivery & Lifecycle Information:

[Winchester Interconnect:](#)

[7702-5](#)