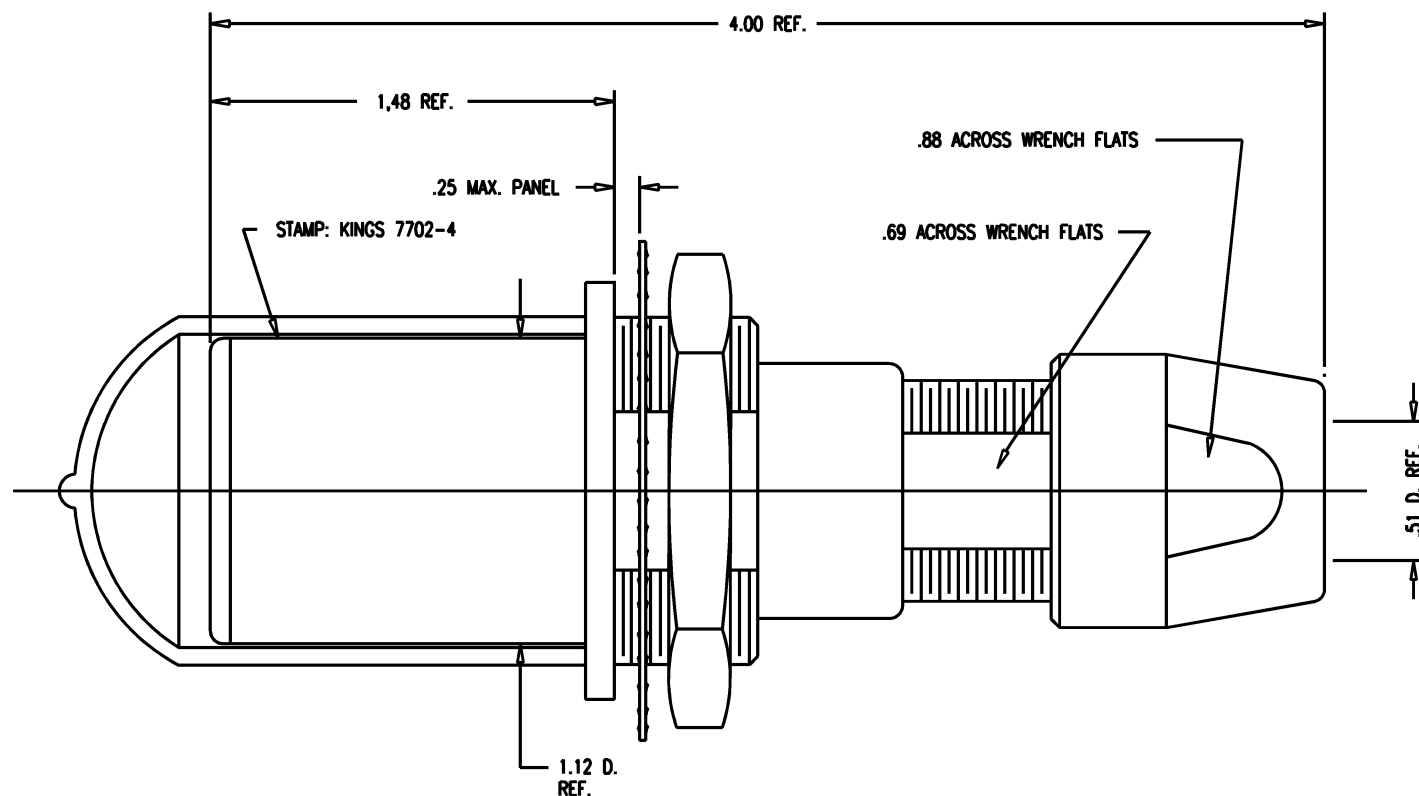


DASH NO.	M CODE	MADE FROM
----------	--------	-----------

# GSD

7702-4

REVISIONS	
ISSUE	CHANGES
0	ER 35430 KH 04/10/95
1	CN 37238 D KH 02/03/97



#### NOTES:

1. FOR USE WITH 700 CABLE GROUP.
2. FOR CABLING INSTRUCTIONS SEE KAI-8010.
3. FOR CABLE TRIMMING USE KTJ-300 AND KTD-300.
4. FOR CRIMPING USE DIE SIZE 2040.

#### 5. MATERIALS:

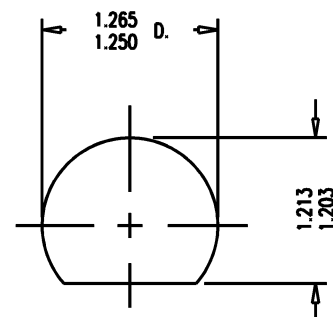
INSULATORS-TEFLON, ASTM-D-4894  
 LOCKWASHER-SPRING STEEL, PER ASTM A682  
 GASKETS-SILICONE RUBBER, ZZ-R-765  
 CAP-VINYL  
 K-GRIP SLEEVE-COMMERCIAL BRONZE, ASTM-B-135  
 CENTER CONTACT  
 OUTER CONTACT SPRING } BER. COP., ASTM-B-196  
 INSERT  
 ALL OTHER METAL PARTS-BRASS, ASTM-B16

#### 6. FINISHES:

CENTER CONTACT } GOLD PLATE PER MIL-G-45204  
 OUTER CONTACT SPRING }  
 LOCKWASHER  
 NUTS } KINGS TARNISH RESISTANT NICKEL FINISH (TR-5)  
 COLLET }  
 BODIES }  
 ALL OTHER METAL PARTS-SILVER PLATE PER QQ-S-365

#### 7. ELECTRICAL CHARACTERISTICS:

NOMINAL IMPEDANCE: 75 OHMS  
 FREQUENCY RANGE: DC-500 MHZ  
 VOLTAGE BREAKDOWN: CENTER CONDUCTOR/INNER GROUND: 1500 VRMS  
 INNER GROUND/OUTER GROUND: 500 VRMS



# GSD

MOUNTING HOLE

KAM5521

SCALE 2:1

APPROX SURFACE AREA

USED ON

REF: KP-8022-704-400

JK, BKHD, TRI-LOC,  
SERIAL DIGITAL

DRAWN	KH	DATE	04/10/95
DESIGN	DW	DATE	04/11/95
APPR.		DATE	

**KINGS**  
ELECTRONICS CO., INC.  
TUCKAHOE, NEW YORK 10707

7702-4

# Mouser Electronics

Authorized Distributor

Click to View Pricing, Inventory, Delivery & Lifecycle Information:

[Winchester Interconnect:](#)

[7702-4](#)