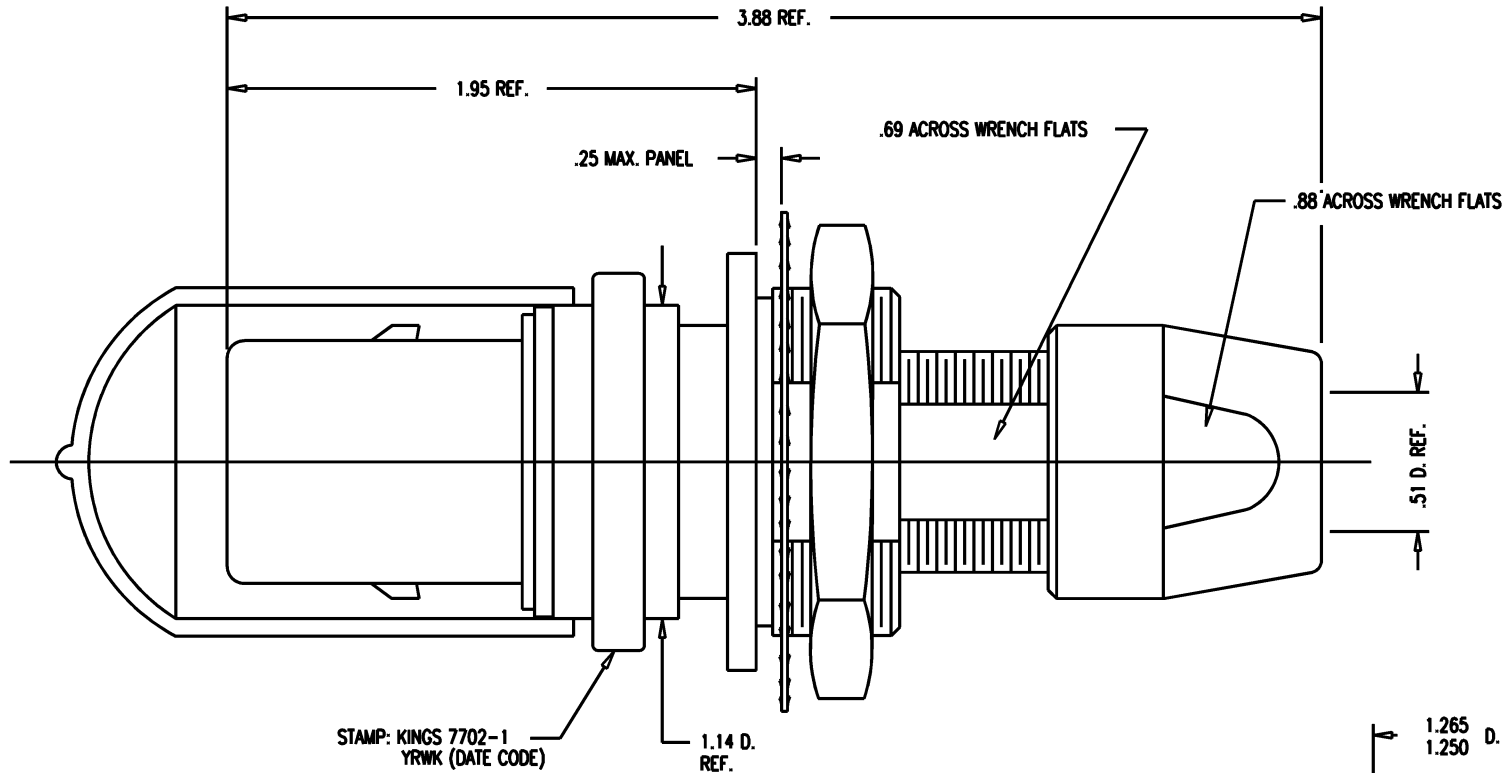
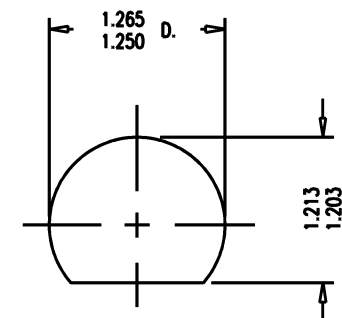


GSD



- NOTES:
1. FOR USE WITH 700 CABLE GROUP.
 2. FOR CABLING INSTRUCTIONS SEE KAI-8010.
 3. FOR CABLE TRIMMING USE KTJ-300 AND KTD-300.
 4. FOR CRIMPING USE DIE SIZE 2040.
 5. MATERIALS:
 INSULATORS-TEFLON, ASTM-D-4894
 LOCKWASHER-SPRING STEEL, PER ASTM A682
 CONDUCTIVE GASKET-CONSIL C 87-10004, 60-70 DUROMETER
 GASKETS-SILICONE RUBBER, ZZ-R-765
 CAP-VINYL
 K-GRIP SLEEVE-COMMERCIAL BRONZE, ASTM-B-135
 OUTER CONTACT-PHOSPHOR BRONZE, ASTM-B-103
 BODY-BER. COP., ASTM-B-196
 ALL OTHER METAL PARTS-BRASS, ASTM-B16
 6. FINISHES:
 CENTER CONTACT-GOLD PLATE PER MIL-G-45204
 LOCKWASHER
 NUTS
 COLLET
 OUTER BODIES
 BODY RING
 ALL OTHER METAL PARTS-SILVER PLATE PER QQ-S-365
 } KINGS TARNISH RESISTANT NICKEL FINISH (TR-5)
 7. ELECTRICAL CHARACTERISTICS:
 NOMINAL IMPEDANCE: 75 OHMS
 FREQUENCY RANGE: DC-500 MHZ
 VOLTAGE BREAKDOWN: CENTER CONDUCTOR/INNER GROUND: 1500 VRMS
 INNER GROUND/OUTER GROUND: 500 VRMS



MOUNTING HOLE

GSD

7702-1

REVISIONS		
ISSUE	CHANGES	
0	ER 35427 KH 04/12/95	
1	CN 37942 E TML 12/16/99	

Mouser Electronics

Authorized Distributor

Click to View Pricing, Inventory, Delivery & Lifecycle Information:

[Winchester Interconnect:](#)

[7702-1](#)