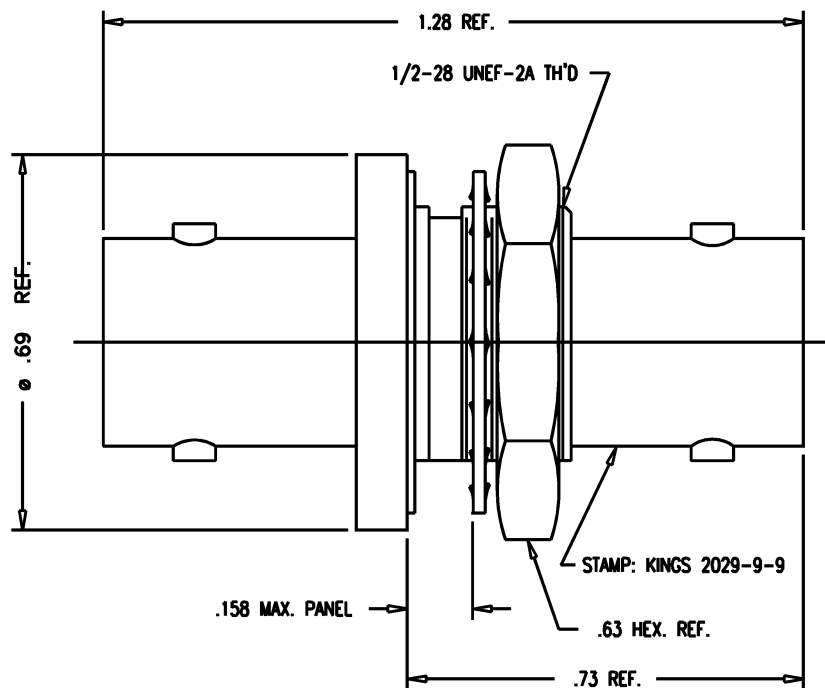


DASH NO.	M CODE	MADE FROM
----------	--------	-----------



NOTES:

1. MATERIALS:

INSULATORS: TEFLON, ASTM-D4894
 GASKET: SILICONE RUBBER, A-A-59588
 LOCKWASHER: PHOSPHOR BRONZE, ASTM-B103
 CENTER CONTACT: BER. COP., ASTM-B196
 ALL OTHER METAL PARTS: BRASS, ASTM-B16

2. FINISHES:

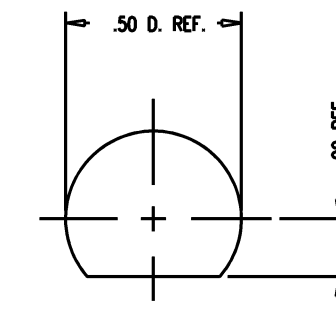
CENTER CONTACT: GOLD, ASTM-B488
 ALL OTHER METAL PARTS: NICKEL, SAE-AMS-QQ-N-290.

3. ELECTRICAL CHARACTERISTICS:

NOMINAL IMPEDANCE: 75 OHMS
 VOLTAGE RATING: 500 VRMS
 FREQUENCY RANGE: DC TO 2 GHz

4. HEX NUT PART NUMBER 492-A-9 M06.

GSD



MOUNTING HOLE

GSD

2029-9-9

REVISIONS

ISSUE	CHANGES
1	CN 33546 A REDRAWN KH 11/19/91
2	CN 35369 C KVH 03/31/94
3	CN 39467 E DRK 05/15/06

SCALE 4:1

APPROX SURFACE AREA

USED ON

REF:

ADAPTER, F-F, BULKHEAD,
75 BNC

DRAWN KH DATE 11/19/91

DESIGN DW DATE 11/19/91

APPR. DATE

KINGS
ELECTRONICS CO., INC.
ROCK HILL, SOUTH CAROLINA 29730

2029-9-9

Mouser Electronics

Authorized Distributor

Click to View Pricing, Inventory, Delivery & Lifecycle Information:

[Winchester Interconnect:](#)

[2029-9-9](#)