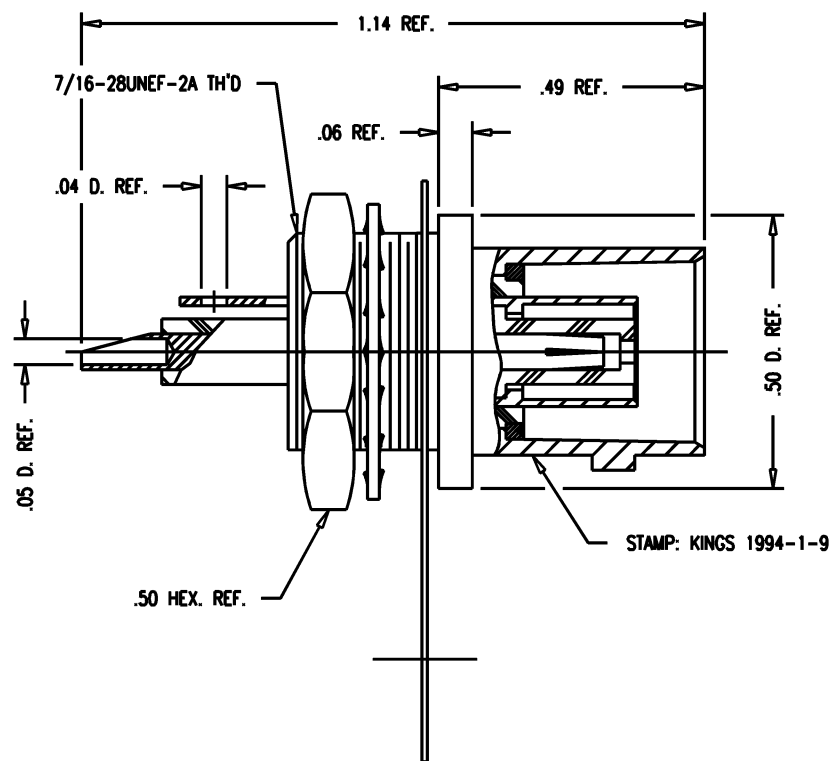


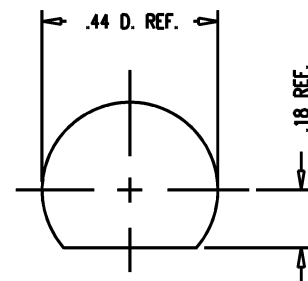
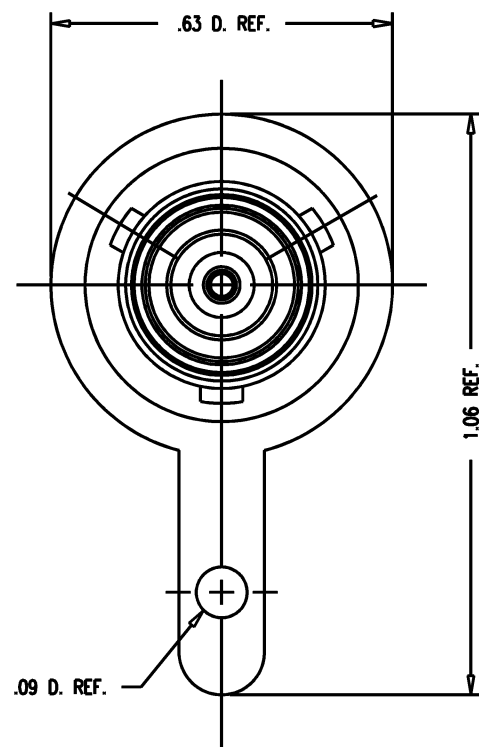
| DASH NO. | M CODE | MADE FROM |
|----------|--------|-----------|
|----------|--------|-----------|

GSD



NOTES:

- FOR USE WITH .122 MAX. PANEL THICKNESS.
- INTERFACE PER MIL-STD-348, FIG. 201-2.
- MATERIALS:
INSULATORS: TEFLON, ASTM -D-1457
CENTER CONTACT: BER. COPPER, ASTM-B-196
ALL OTHER METAL PARTS: BRASS, QQ-B-626
- FINISHES:
ALL CONTACTS: HARD GOLD PLATE, PER MIL-G-45204
GROUNDING LUG: HOT TIN DIP, PER MIL-T-10727
ALL OTHER METAL PARTS: KINGS TARNISH RESISTANT FINISH (TR-5)
- ELECTRICAL CHARACTERISTICS:
NOMINAL IMPEDANCE: NON-CONSTANT
WORKING VOLTAGE: 400 VRMS
FREQUENCY RANGE: DC TO 5 MHz.
- SAME AS TROMPETER BJ77 IN FORM, FIT & FUNCTION.



MOUNTING HOLE

GSD

1994-1-9

REVISIONS

| ISSUE | CHANGES |
|-------|---------------------------------------|
| 5 | CN 33012 A REDRAWN WJM 04/03/91 |
| 6 | CN 35074 D MJB 11/09/93 |

WJMO927

SCALE 4:1

APPROX SURFACE AREA

WAS: E-4723

USED ON

REF:

RECEPTACLE, BULKHEAD, TRB

| | |
|------------|---------------|
| DRAWN WJM | DATE 04/04/91 |
| DESIGN VLS | DATE 05/03/91 |
| APPR. | DATE |

KINGS
ELECTRONICS CO., INC.
TUCKAHOE, NEW YORK 10707

1994-1-9

Mouser Electronics

Authorized Distributor

Click to View Pricing, Inventory, Delivery & Lifecycle Information:

[Winchester Interconnect:](#)

[1994-1-9](#)