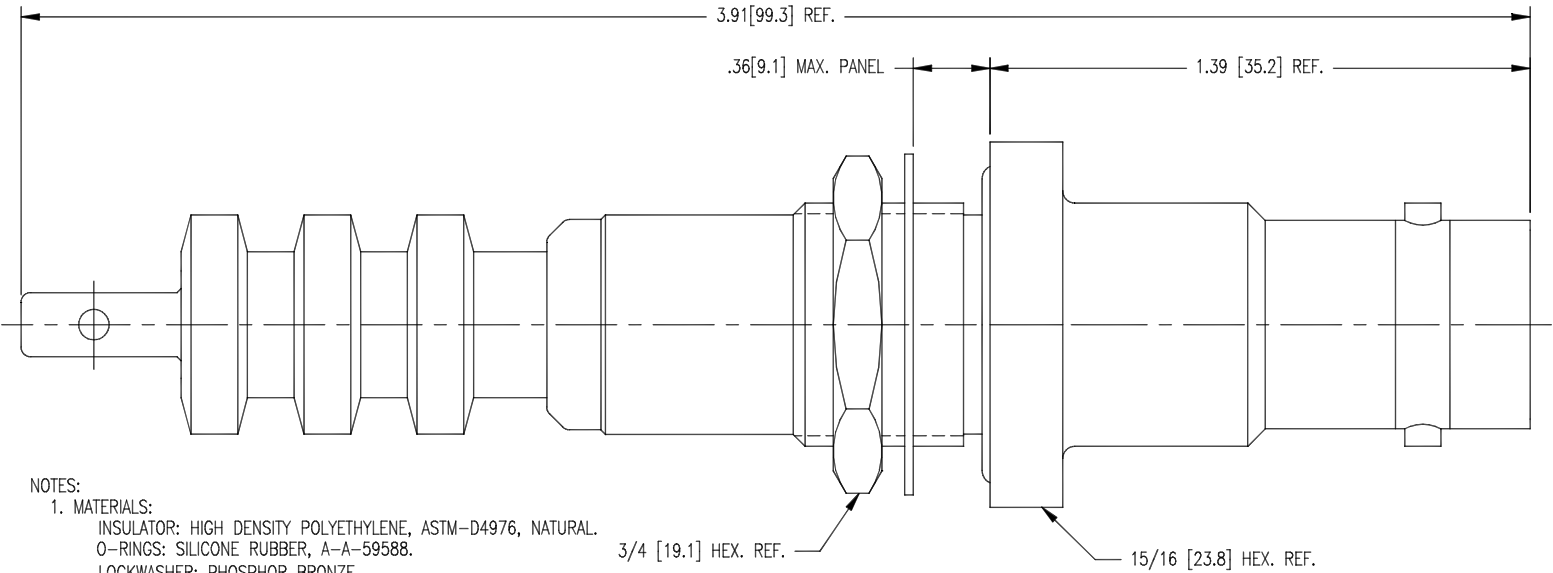


DASH NO.	M CODE	MADE FROM
----------	--------	-----------

SD

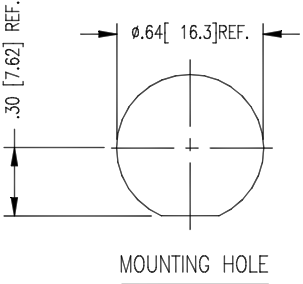
PART NO.1764-1

REVISIONS	
ISSUE	CHANGES
4	CN 37385 C REDRAWN JW 11/10/97
5	CN 37511 C JW 12/05/97
6	CN 38551 C TML 05/06/02
7	CN 38727 E BDH 11/27/02
8	CN 38925 E JLA 09/11/03
K	ER12813 DRK 12/10/08



- NOTES:
1. MATERIALS:
INSULATOR: HIGH DENSITY POLYETHYLENE, ASTM-D4976, NATURAL.
O-RINGS: SILICONE RUBBER, A-A-59588.
LOCKWASHER: PHOSPHOR BRONZE.
ALL OTHER PARTS: BRASS, ASTM-B16
 2. FINISHES:
CENTER CONTACT: GOLD PLATE PER ASTM-B488.
ALL OTHER METAL PARTS: KINGS TARNISH RESISTANT FINISH (TR-5)
 3. ELECTRICAL CHARACTERISTICS:
NOMINAL IMPEDANCE: NON-CONSTANT
VOLTAGE RATING: 20 KVDC
INSULATION RESISTANCE: 10⁶ MEGOHMS.
 4. LEAKAGE MAY NOT EXCEED 10x-7 CC/SEC.
OF TRACER GAS AT ATMOSPHERIC PRESSURE.

UNLESS OTHERWISE SPECIFIED	
1. ALL DIMENSIONS IN INCHES [MILLIMETERS].	
2. TOLERANCES:	
.XXX ±.004	.XX ±.010
[.XXX ±.10]	[.XX ±.25]
FRACTIONS: X/Y ±.010 [.25]	ANGLES: ± 1°
○ CRITICAL DIMENSIONS	



CUSTOMER SALES DRAWING	
SCALE	3:1
APPROX SURFACE AREA	
USED ON	
REF:	
20 KV HV, RECEPTACLE BULKHEAD MOUNT	
DRAWN	IDE
DATE	12/18/72
DESIGN	MG
DATE	12/20/72
APPR.	FDH
DATE	11/17/97
<div> <div> <div> <div>by WINCHESTER</div> <div>ELECTRONICS</div> </div> </div> <div> <div>Winchester Electronics</div> <div>62 Barnes Industrial</div> <div>Road North</div> <div>Wallingford, CT 06492</div> </div> </div>	
SD1764-1	
B	SIZE

Mouser Electronics

Authorized Distributor

Click to View Pricing, Inventory, Delivery & Lifecycle Information:

[Winchester Interconnect:](#)

[1764-1](#)