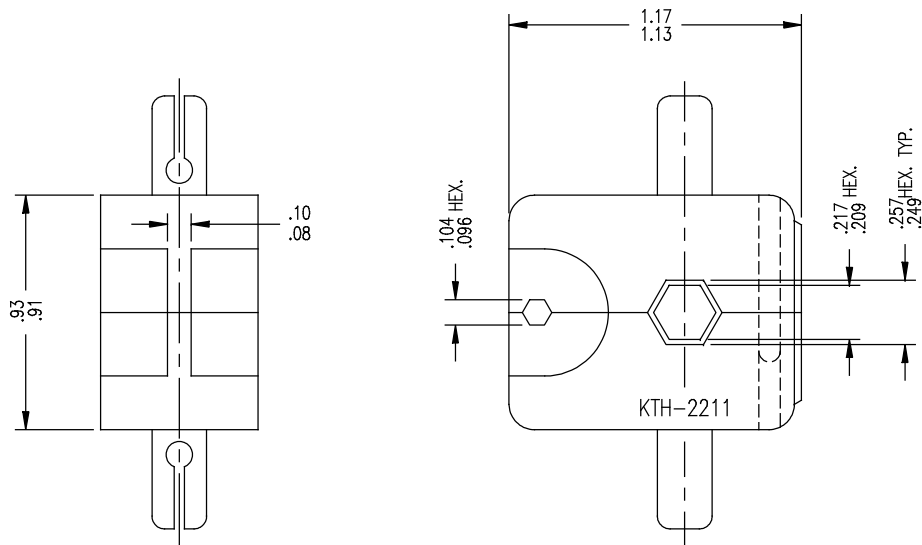


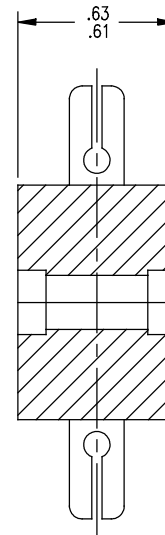
GSD

KTH-2211



NOTES:

1. FOR USE WITH BOEING S280W503-2 & ADAMS RUSSELL FC14Z CABLES.
2. FINISH: BLACK OXIDE



GSD

REVISIONS

ISSUE	CHANGES
0	ER 33868 KH 04/21/92

KAM1926

SCALE 2:1

APPROX SURFACE AREA

WAS: E-17390-3

USED ON

REF: BOEING

CRIMP DIE

DRAWN KH DATE 04/21/92

DESIGN JT DATE 04/22/92

APPR. DATE

KINGS
ELECTRONICS CO., INC.
TUCKAHOE, NEW YORK 10707

KTH-2211

Mouser Electronics

Authorized Distributor

Click to View Pricing, Inventory, Delivery & Lifecycle Information:

[Winchester Interconnect:](#)

[KTH-2211](#)