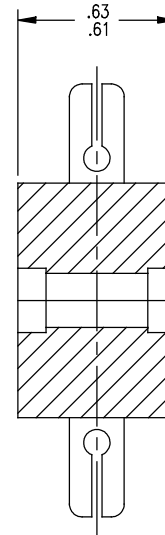
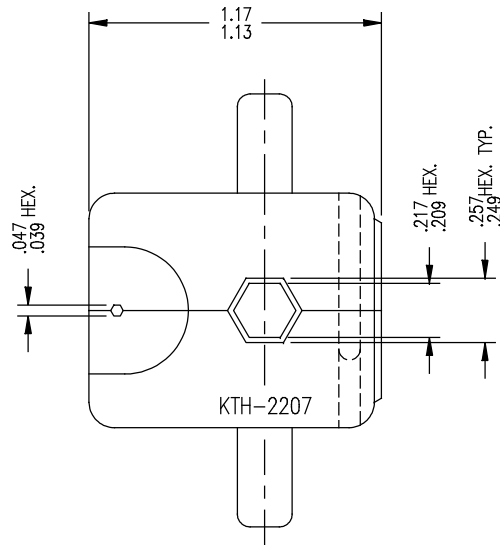
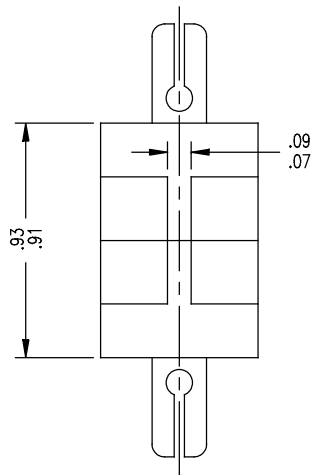


GSD

KTH-2207



## NOTES:

1. FOR USE WITH BOEING S280W503-2 & ADAMS RUSSELL FC14Z CABLES.
2. FINISH: BLACK OXIDE

## REVISIONS

| ISSUE | CHANGES                 |
|-------|-------------------------|
| 0     | ER 33832<br>KH 04/09/92 |

JCA2655

SCALE 2:1

APPROX SURFACE AREA

WAS: E-17166-4

USED ON

REF: BOEING

CRIMP DIE

DRAWN JCA DATE 04/06/92

DESIGN JT DATE 04/07/92

APPR. DATE

**KINGS**  
ELECTRONICS CO., INC.  
TUCKAHOE, NEW YORK 10707

KTH-2207

GSD

# Mouser Electronics

Authorized Distributor

Click to View Pricing, Inventory, Delivery & Lifecycle Information:

[Winchester Interconnect:](#)

[KTH-2207](#)