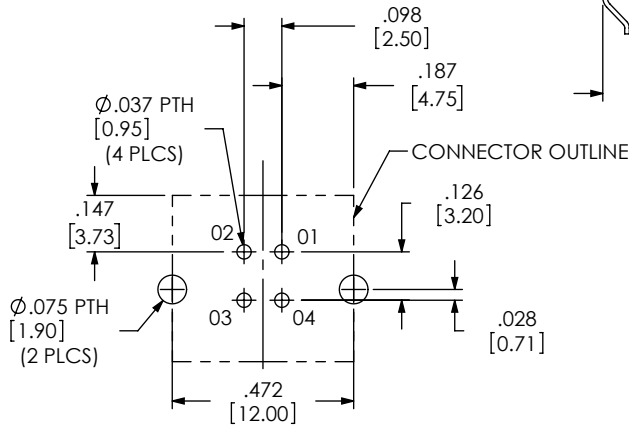
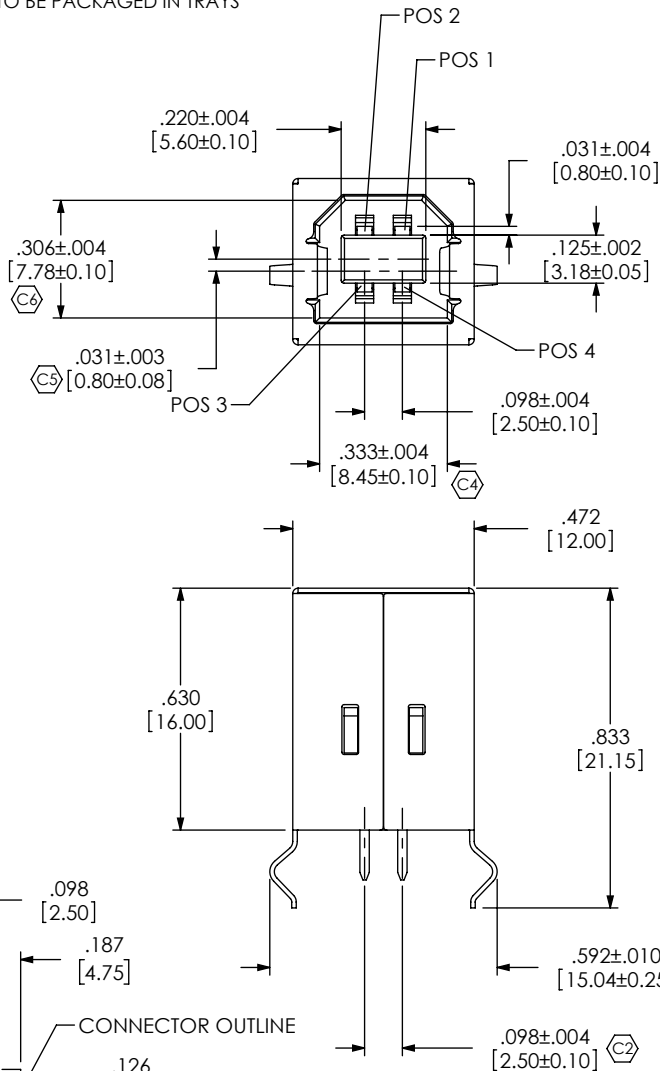


NOTES:

1. C REPRESENTS A CRITICAL DIMENSION.
2. VERIFY -S PLATING, VISUALLY CHECK -F ONLY.
3. RoHS PARTS HAVE MATTE TIN ON TAILS.
4. PARTS TO BE PACKAGED IN TRAYS

DO NOT
SCALE FROM
THIS PRINT



RECOMMENDED PCB LAYOUT

CONFIGURATION
-S: SINGLE

PLATING
-F: GOLD FLASH ON MATING AREA,
MATTE TIN ON TAIL.
W/ NICKEL UNDERPLATE (SEE NOTE 3 FOR -R)
-S: .000030" GOLD ON , MATING AREA,
MATTE TIN ON TAIL.
W/ NICKEL UNDERPLATE (SEE NOTE 3 FOR -R)

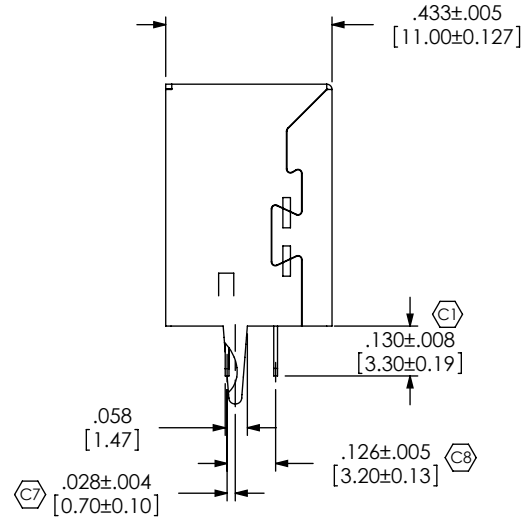
USB-B-S-X-X-VT-X

TYPE
-B

E/OPTION
-R: RoHS COMPLIANT -
LEAD FREE WITH HIGH TEMP INSULATOR

RA TERMINATION
-VT: VERTICAL THRU HOLE

COLOR
-B: BLACK
-W: WHITE



UNLESS OTHERWISE SPECIFIED,
DIMENSIONS ARE IN INCHES.
TOLERANCES ARE:
DECIMALS ANGLES
.X: ±.01 [.3]
.XX: ±.005 [.13]
.XXX: ±.005 [.13]

PROPRIETARY NOTE
THIS DOCUMENT CONTAINS INFORMATION
CONFIDENTIAL AND PROPRIETARY TO
SAMTEC, INC. AND SHALL NOT BE REPRODUCED
OR TRANSFERRED TO OTHER DOCUMENTS OR
DISCLOSED TO OTHERS OR USED FOR ANY
PURPOSE OTHER THAN THAT WHICH IT WAS
OBTAINED WITHOUT THE EXPRESSED WRITTEN
CONSENT OF SAMTEC, INC.



520 PARK EAST BLVD, NEW ALBANY, IN 47150
PHONE: 812-944-6733 FAX: 812-948-5047
e-Mail: info@SAMTEC.com code: 55322

MATERIAL: DO NOT SCALE DRAWING
INSULATOR: PBT (RATED UL 94V-0)
CONTACT OR TERMINAL: PHOS BRONZE
BACK SHIELD: NICKEL PLATED PHOS BRONZE
FRONT SHIELD: TIN PLATED PHOS BRONZE
MAX FLASH ALLOWED: .051
MAX GATE VESTIGE: .051

SHEET SCALE: 2:1

DESCRIPTION:
USB B, SINGLE, VERTICAL THOUGH HOLE

DWG. NO. USB-B-S-X-X-VT-X

BY: LENNY K 11/15/06 SHEET 1 OF 1

Mouser Electronics

Authorized Distributor

Click to View Pricing, Inventory, Delivery & Lifecycle Information:

[Samtec:](#)

[USB-B-S-S-W-VT-R](#)