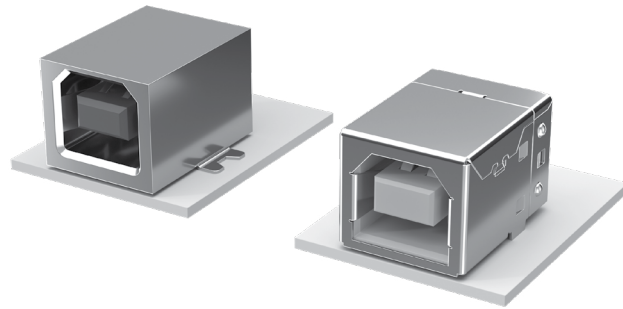




# STANDARD & RUGGED USB 2.0

## USB-B/USBR-B SERIES



### SPECIFICATIONS

**Insulator Material:**

High Temperature  
Thermoplastic

**Contact Material:**

Phosphor Bronze

**Plating:**

Gold on Contacts,  
Nickel on Shell, Tin on Tails

**Operating Temp Range:**

-50 °C to +85 °C

**Voltage Rating:**

30 VAC

**Cycles:**

1500  
(maximum number  
of cycles tested)

**Packaging:**

Packaged and shipped in  
Bulk Packaging Trays; Trays  
suitable for automation are  
available upon request.

**Lead-Free Solderable:**

USB-SM=Yes  
USB-TH=No, Lead Wave Only  
USB-VT=No, Lead Wave Only  
USBR=Yes

**TID Number:**

USB-B-S-X-X-TH (61001155)

### SERIES

#### USB

= Standard Connector

#### USBR

= Increased  
Retention Connector  
(Complies with Class 1,  
DIV II minimum withdrawal  
requirement of 15N)

### B

### S

### PLATING

#### -F

= Gold  
Flash on  
Mating Area,  
Tin on Tails

#### -S

= 30 μ"  
(0.76 μm)  
Gold on  
Mating Area,  
Tin on Tails

### COLOR

#### -B

= Black  
(USB only)

#### -W

= White  
(USB only)

#### -O

= Orange  
(USBR only)

### TERMINATION

#### -TH

= Through-hole

#### -SM

= Surface Mount  
(USB only)

#### -VT

= Vertical Top Entry

### OTHER OPTION

#### -TR

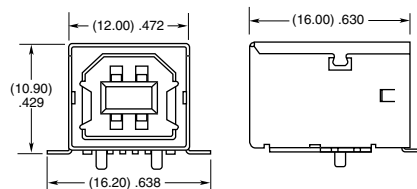
= Tape  
and Reel  
(-SM only)

#### -FR

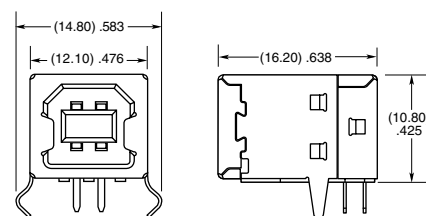
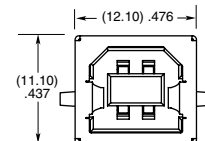
= Full Reel  
Tape & Reel  
(must order  
maximum  
quantity  
per reel;  
contact  
Samtec for  
quantity  
breaks)  
(-SM only)

### MATING / UNMATING FORCE (100 CYCLES)

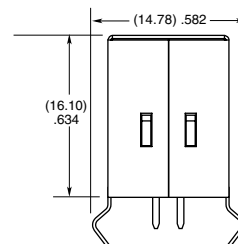
SERIES	MATING	UNMATING
USB	5.3 (23.59 N)	6.1 (27.15 N)
USBR	11.8 (52.51 N)	11.5 (51.18 N)



-SM



-TH



-VT

View complete specifications at: [samtec.com?USB-B](http://samtec.com?USB-B) or [samtec.com?USBR-B](http://samtec.com?USBR-B)

# Mouser Electronics

Authorized Distributor

Click to View Pricing, Inventory, Delivery & Lifecycle Information:

[Samtec:](#)

[USB-B-S-F-B-TH](#) [USB-B-S-F-B-SM-R](#) [USB-B-S-S-B-VT](#) [USB-B-S-F-W-SM-TR](#) [USB-B-S-S-B-SM](#) [USB-B-S-S-W-TH](#)  
[USB-B-S-F-B-SM](#) [USB-B-S-S-W-SM](#) [USB-B-S-F-B-SM-TR](#) [USB-B-S-S-B-SM-R](#) [USB-B-S-F-W-SM-R](#) [USB-B-S-F-B-](#)  
[VT](#) [USB-B-S-S-W-VT](#) [USB-B-S-F-W-TH](#) [USB-B-S-S-B-TH](#) [USB-B-S-F-B-TH-R](#) [USB-B-S-F-B-VT-R](#) [USB-B-S-S-W-](#)  
[VT-R](#) [USB-B-S-S-B-SM-R-TR](#) [USB-B-S-S-B-SM-TR](#) [USB-B-S-F-W-VT-R](#) [USB-B-S-S-W-TH-TR](#) [USB-B-S-S-W-SM-](#)  
[TR](#) [USB-B-S-F-B-TH-TR](#) [USB-B-S-S-W-SM-R](#) [USB-B-S-F-W-TH-R](#) [USB-B-S-F-B-SM-R-TR](#) [USB-B-S-F-W-SM-R-TR](#)  
[USB-B-S-F-W-SM](#) [USB-B-S-S-B-TH-R-TR](#) [USB-B-S-F-W-TH-TR](#) [USB-B-S-F-B-TH-R-TR](#) [USB-B-S-S-W-TH-R](#) [USB-](#)  
[B-S-S-B-VT-R](#) [USB-B-S-S-W-SM-R-TR](#) [USB-B-S-F-W-VT](#) [USB-B-S-S-B-TH-TR](#) [USB-B-S-F-W-TH-R-TR](#) [USB-B-S-F-](#)  
[B-TH-FR](#) [USB-B-S-S-B-TH-FR](#) [USB-B-S-F-W-TH-FR](#) [USB-B-S-S-B-SM-FR](#) [USB-B-S-F-W-SM-FR](#)