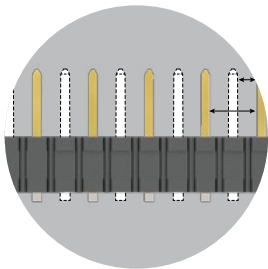


## HIGH-POWER SYSTEMS

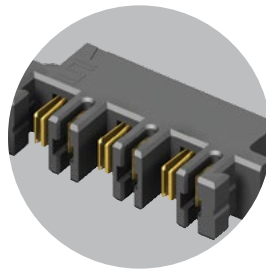
**20-60 A**  
per blade

### FEATURES & BENEFITS

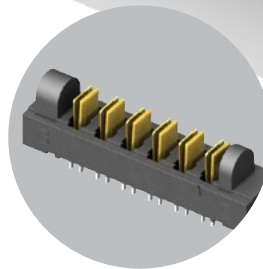
- Current Rating: 23 A - 58.7 A per power blade
- 3.81 mm, 5.00 mm and 6.35 mm pitch
- Dual blade contact system
- Power only or power/signal combinations available
- Right-angle and vertical orientations
- Rugged screw down and locking clip options
- Discrete wire cable assembly with 10-16 AWG wire
- "Hinged" for unique mating in any orientation from 0° to 90° and space confined applications



Selectively loading contacts achieves customer specific creepage and clearance requirements.



Hermaphroditic options available ([samtec.com?MPPT](http://samtec.com?MPPT))



Hinging options available ([samtec.com?FMPT](http://samtec.com?FMPT) [samtec.com?FMPS](http://samtec.com?FMPS))

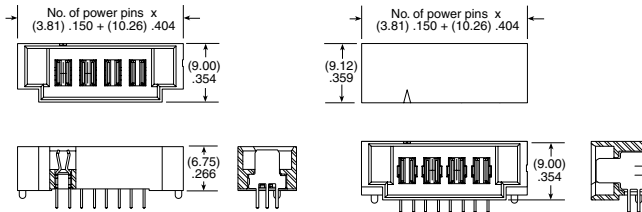
### KEY SPECIFICATIONS

| SERIES        | PET/PES         | PETC/PESC                                      | MPT/MPS          | MPTC/MPSC                                      | UPT/UPS         | FMPT/FMPS        | UPPT            | MPPT             |
|---------------|-----------------|--|------------------|--|-----------------|------------------|-----------------|------------------|
| PITCH         | (6.35 mm) .250" | (6.35 mm) .250" (pwr)<br>(2.54 mm) .100" (sig) | (5.00 mm) .1969" | (5.00 mm) .197" (pwr)<br>(2.00 mm) .079" (sig) | (3.81 mm) .150" | (5.00 mm) .1969" | (3.81 mm) .150" | (5.00 mm) .1969" |
| CCC (1 PIN)*  | 58.7 A          | 31.4 A   | 28.8 A           | 28.8 A   | 23 A            | 26.7 A           | 21.4 A          | 23.3 A           |
| CCC (2 PINS)* | 48.5 A          | 28.0 A   | 24.7 A           | 24.7 A   | 18.6 A          | 22.9 A           | 19.8 A          | 20.5 A           |
| CCC (3 PINS)* | 41.1 A          | 24.4 A   | 24.1 A           | 24.1 A   | 17.5 A          | 19.1 A           | 17.1 A          | 19.4 A           |
| CREEPAGE      | (3.66 mm) .144" | (3.66 mm) .144"                                | (2.86 mm) .113"  | (2.86 mm) .113"                                | (5.5 mm) .217"  | (6.53 mm) .257"  | (1.91 mm) .075" | (2.95 mm) .116"  |
| CLEARANCE     | (3.31 mm) .130" | (3.31 mm) .130"                                | (2.71 mm) .106"  | (2.71 mm) .106"                                | (1.51 mm) .059" | (2.71 mm) .106"  | (1.51 mm) .059" | (2.71 mm) .106"  |
| VAC           | 725 VAC         | Signal: 450 VAC<br>Power: 650 VAC              | 575 VAC          | 250 VAC  | 438 VAC         | 525 VAC          | 425 VAC         | 600 VAC          |
| VDC           | 1025 VDC        | Signal: 636 VDC<br>Power: 919 VDC              | 812 VDC          | 354 VDC  | 620 VDC         | 742 VDC          | 600 VDC         | 848 VDC          |
| CYCLES        | 100             | 100  | 100              | 100  | 25              | 100              | 100             | 100              |

**(3.81 mm) .150" PITCH • 20 A DUAL BLADE/LEAF POWER SYSTEMS**

| SERIES          | POWER PINS | LEAD STYLE  | TAIL LENGTH  | PLATING OPTION   | TAIL  | OTHER OPTION  |
|-----------------|------------|---|--|--|---|---|
| UPT<br>Terminal | -02        | -01<br>= RA only                                    | -01<br>= Use with<br>(1.60 mm) .062"<br>Thick PCB<br>(-V & -RA only) | -L<br>= 10 μ" (0.25 μm)<br>Gold on contact,<br>Matte Tin on tail | -V<br>= Vertical (Not available<br>with -T plating) | -LC<br>= Locking Clip<br>(Manual placement<br>required)<br>Not available with<br>-PV option |
|                 | -04        | -03.0<br>= (03.0 mm) .118"<br>(UPT-V & UPT-PV only) |  |  |   |   |
| UPS<br>Socket   | -06        | -04.0<br>= (04.0 mm) .157"<br>(UPS-V & UPS-PV only) | -03<br>= Use with<br>(1.60 mm) .062"<br>Thick PCB<br>(-PV only)      | -T<br>= Matte Tin<br>(-RA & -PV<br>options only)                 | -RA<br>= Right-angle                                |   |
|                 | -08        | -07.0<br>= (07.0 mm) .276"<br>(UPS-V & UPS-PV only) |  |  | -PV<br>= Press-fit,<br>Vertical                     |   |

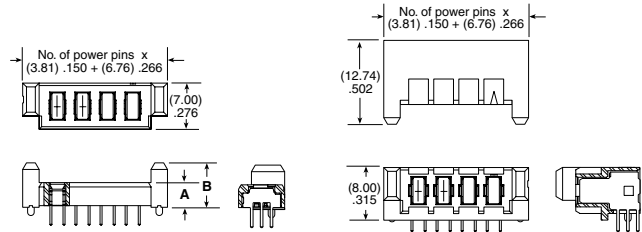
**UPT**  
Board Mates:  
UPS



| MATED HEIGHT*  |                |
|----------------|----------------|
| UPS LEAD STYLE | UPT LEAD STYLE |
|                | -03.0          |
| -04.0          | (7.00) .276    |
| -07.0          | (10.00) .394   |

\*Processing conditions will affect mated height.

**UPS**  
Board Mates:  
UPT



| LEAD STYLE | A           | B           |
|------------|-------------|-------------|
| -04.0      | (3.75) .148 | (6.75) .266 |
| -07.0      | (6.75) .266 | (9.75) .384 |

View complete specifications at: [samtec.com?UPT](http://samtec.com?UPT) & [samtec.com?UPS](http://samtec.com?UPS)

| SERIES | NO. OF POSITIONS | 01 | TAIL LENGTH | PLATING OPTION | RA | SD | "X"R |
|--------|------------------|----|-------------|----------------|----|----|------|
|--------|------------------|----|-------------|----------------|----|----|------|

**UPPT**  
Hermaphroditic

-02, -04, -06, -08

-01  
= (1.60 mm) .062"  
Thick PCB

-L  
= 10 μ" (0.25 μm)  
Gold on contact,  
Matte Tin on tail

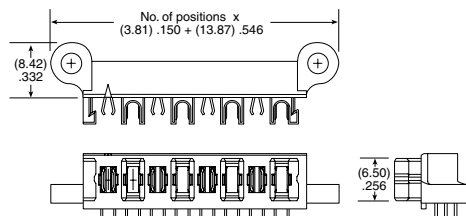
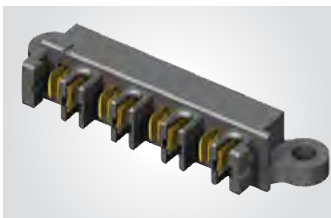
-T  
= Matte Tin

Leave blank for tube packaging

-TR  
= Tape & Reel

-FR  
= Full Reel  
Tape & Reel  
(must order max. quantity per reel; contact Samtec for quantity breaks)

**UPPT**  
Board Mates:  
UPPT



View complete specifications at: [samtec.com?UPPT](http://samtec.com?UPPT)

**Note:**  
Some lengths, styles and options are non-standard, non-returnable

# Mouser Electronics

Authorized Distributor

Click to View Pricing, Inventory, Delivery & Lifecycle Information:

## Samtec:

[UPS-02-01-01-L-RA-LC-TR](#) [UPS-02-07.0-02-L-V-LC](#) [UPS-04-01-01-L-RA](#) [UPS-04-04.0-01-L-V-TR](#) [UPS-04-07.0-03-L-PV](#) [UPS-06-04.0-01-L-V-LC](#) [UPS-08-01-02-L-RA](#) [UPS-08-07.0-01-L-V-LC](#) [UPS-02-01-01-L-RA-LC](#) [UPS-04-01-02-T-RA](#) [UPS-06-01-01-L-RA-TR](#) [UPS-06-01-01-T-RA-LC-TR](#) [UPS-08-01-01-L-RA-LC](#) [UPS-08-07.0-01-L-V-TR](#) [UPS-08-07.0-02-L-V](#) [UPS-08-07.0-02-L-V-TR](#) [UPS-02-01-01-T-RA-LC-TR](#) [UPS-06-07.0-01-L-V-LC-TR](#) [UPS-08-01-01-T-RA-LC-TR](#) [UPS-04-01-01-L-RA-LC-TR](#) [UPS-04-01-01-L-RA-TR](#) [UPS-04-01-01-T-RA](#) [UPS-04-07.0-02-L-V](#) [UPS-06-04.0-03-L-PV](#) [UPS-06-07.0-01-L-V-LC](#) [UPS-08-04.0-02-L-V](#) [UPS-02-01-01-T-RA](#) [UPS-02-04.0-01-L-V-LC](#) [UPS-02-04.0-01-L-V-TR](#) [UPS-04-01-01-T-RA-TR](#) [UPS-04-01-02-L-RA-LC](#) [UPS-06-01-01-L-RA-LC-TR](#) [UPS-06-04.0-01-L-V-TR](#) [UPS-06-07.0-02-L-V](#) [UPS-08-04.0-03-T-PV](#) [UPS-06-07.0-03-L-PV](#) [UPS-08-04.0-02-L-V-LC](#) [UPS-02-07.0-01-L-V-LC](#) [UPS-06-01-01-T-RA](#) [UPS-06-01-01-T-RA-LC](#) [UPS-06-01-01-T-RA-TR](#) [UPS-08-01-01-L-RA-LC-TR](#) [UPS-08-01-01-L-RA-TR](#) [UPS-08-01-01-T-RA](#) [UPS-02-01-01-T-RA-LC](#) [UPS-02-04.0-01-L-V-LC-TR](#) [UPS-08-07.0-03-L-PV](#) [UPS-02-01-02-L-RA-LC](#) [UPS-04-01-01-L-RA-LC](#) [UPS-04-01-01-T-RA-LC](#) [UPS-04-07.0-01-L-V-TR](#) [UPS-06-04.0-02-L-V](#) [UPS-06-04.0-02-L-V-TR](#) [UPS-08-04.0-01-L-V-LC](#) [UPS-02-07.0-03-L-PV](#) [UPS-04-01-02-L-RA-TR](#) [UPS-04-04.0-02-L-V-LC](#) [UPS-06-04.0-03-L-PV-TR](#) [UPS-08-04.0-03-L-PV-TR](#) [UPS-02-07.0-02-L-V](#) [UPS-08-01-02-L-RA-LC](#) [UPS-08-07.0-03-T-PV](#) [UPS-02-07.0-01-L-V-TR](#) [UPS-04-01-02-L-RA](#) [UPS-04-04.0-02-L-V](#) [UPS-04-07.0-02-L-V-TR](#) [UPS-08-01-01-T-RA-TR](#) [UPS-08-07.0-03-L-PV-TR](#) [UPS-02-04.0-02-L-V](#) [UPS-04-04.0-03-T-PV](#) [UPS-06-01-01-L-RA-LC](#) [UPS-06-07.0-01-L-V-TR](#) [UPS-08-01-01-L-RA](#) [UPS-02-01-01-T-RA-TR](#) [UPS-02-01-02-L-RA-LC-TR](#) [UPS-04-07.0-01-L-V-LC](#) [UPS-08-04.0-01-L-V-LC-TR](#) [UPS-08-04.0-01-L-V-TR](#) [UPS-02-01-01-L-RA](#) [UPS-02-04.0-03-L-PV](#) [UPS-02-04.0-03-T-PV](#) [UPS-04-04.0-01-L-V-LC](#) [UPS-04-04.0-01-L-V-LC-TR](#) [UPS-02-01-01-L-RA-TR](#) [UPS-02-07.0-02-L-V-LC-TR](#) [UPS-04-01-01-T-RA-LC-TR](#) [UPS-06-04.0-01-L-V-LC-TR](#) [UPS-08-01-01-T-RA-LC](#) [UPS-08-04.0-01-L-V](#) [UPS-08-04.0-03-L-PV](#) [UPS-04-04.0-03-L-PV-TR](#) [UPS-08-04.0-02-L-V-LC-TR](#) [UPS-02-01-02-L-RA](#) [UPS-04-07.0-02-L-V-LC-TR](#) [UPS-08-07.0-02-L-V-LC-TR](#) [UPS-06-07.0-02-L-V-LC](#) [UPS-02-04.0-02-L-V-LC-TR](#) [UPS-04-04.0-02-L-V-LC-TR](#) [UPS-06-04.0-02-L-V-LC-TR](#) [UPS-06-07.0-02-L-V-LC-TR](#)