

FIREFLY™ HIGH-DENSITY COPPER FLYOVER® SYSTEM



FEATURES & BENEFITS

- Pin compatible with optical FireFly™ using the same connector system
- Data connection is taken "off board" for easier routing
- Low-cost solution for seamless integration of new and existing designs
- Low-profile housing for space savings
- x4 bidirectional or x12 unidirectional
- Variety of end 2 termination options

14
G b p s

x4 Bidirectional ECUE
x12 Unidirectional ECUE

PAM 4

56
G b p s

x4 Bidirectional ECUE-2



Standard Copper (ECUE)

- 14 Gbps
- 100 Ω, 34 AWG or 36 AWG Eye Speed® twinax cable



Optimized Copper (ECUE-2)

- 28 Gbps card design
- 100 Ω, 34 AWG Eye Speed® ultra low skew twinax cable
- Optimized for use with connector UEC5-2



PCI Express®-Over-FireFly™ Copper (PCUE)

- PCIe® 4.0
- 100 Ω, 34 AWG Eye Speed® ultra low skew twinax cable
- Optimized for use with connector UEC5-2

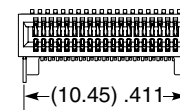
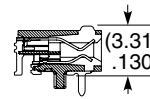
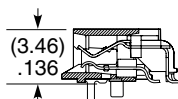
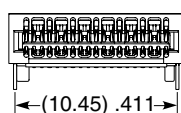
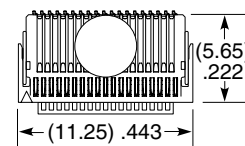
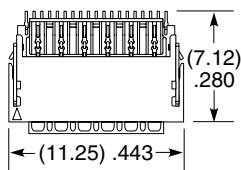
RUGGED MICRO FLYOVER® SOCKET SYSTEM

UEC5	NO. OF POSITIONS	DATA RATE	PLATING OPTION	D	RA	WELD TAB	OPTION	PACKAGING
	-019 (Per Row)	-1 = Up to 16 Gbps -2 = 28 Gbps+	-H = 30 μ " (0.76 μ m) Gold on contact, Gold flash on tail (-1 Data Rate only) -H = 30 μ " (0.76 μ m) Gold on contact, Matte Tin on tail (-2 Data Rate only)			-1 = Through-hole -2 = Surface Mount (Data Rate -1 only)	Leave blank for -2 Data Rate -A = Alignment Pin (Available with Data Rate -1 only)	Leave blank for Tape & Reel -FR = Full Reel Tape & Reel (must order max. quantity per reel; contact Samtec for quantity breaks)

UEC5

Board Mates:

ECUE, ECUO,
PCUO, PCUE,
ETUO



UEC5-019-2-X-D-RA-1

UEC5-019-1-X-D-RA-1-A

Note:

PCB footprints are not interchangeable for -1 and -2 data rate versions.

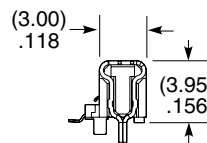
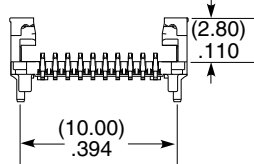
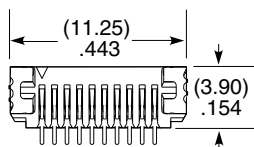
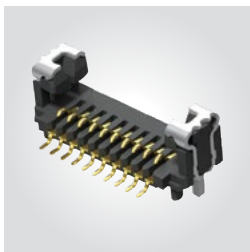
View complete specifications at: samtec.com?UEC5-1 & samtec.com?UEC5-2

UCC8	NO. OF POSITIONS	1	PLATING OPTION	S	WELD TAB	A	PACKAGING
	-010		-H = 30 μ " (0.76 μ m) Gold on contact, Gold flash on tail		-1 = Through-hole		Leave blank for Tape & Reel -FR = Full Reel Tape & Reel (must order max. quantity per reel; contact Samtec for quantity breaks)

UCC8

Board Mates:

ECUE, ECUO,
PCUO, PCUE,
ETUO



Note:

Some sizes, styles and options are non-standard, non-returnable.

View complete specifications at: samtec.com?UCC8

Mouser Electronics

Authorized Distributor

Click to View Pricing, Inventory, Delivery & Lifecycle Information:

[Samtec:](#)

[UEC5-019-1-H-D-RA-2-A](#)