

# FIREFLY™ HIGH-DENSITY COPPER FLYOVER® SYSTEM



## FEATURES & BENEFITS

- Pin compatible with optical FireFly™ using the same connector system
- Data connection is taken "off board" for easier routing
- Low-cost solution for seamless integration of new and existing designs
- Low-profile housing for space savings
- x4 bidirectional or x12 unidirectional
- Variety of end 2 termination options

**14**  
G b p s

x4 Bidirectional ECUE  
x12 Unidirectional ECUE

PAM 4

**56**  
G b p s

x4 Bidirectional ECUE-2



### Standard Copper (ECUE)

- 14 Gbps
- 100  $\Omega$ , 34 AWG or 36 AWG Eye Speed® twinax cable



### Optimized Copper (ECUE-2)

- 28 Gbps card design
- 100  $\Omega$ , 34 AWG Eye Speed® ultra low skew twinax cable
- Optimized for use with connector UEC5-2



### PCI Express®-Over-FireFly™ Copper (PCUE)

- PCIe® 4.0
- 100  $\Omega$ , 34 AWG Eye Speed® ultra low skew twinax cable
- Optimized for use with connector UEC5-2

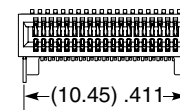
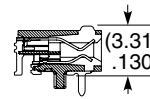
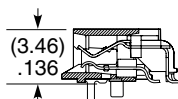
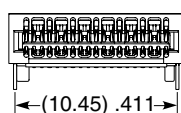
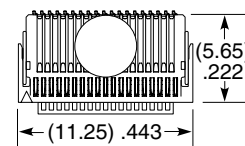
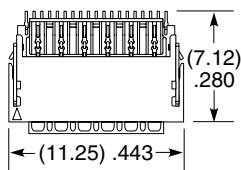
## RUGGED MICRO FLYOVER® SOCKET SYSTEM

UEC5	NO. OF POSITIONS	DATA RATE	PLATING OPTION	D	RA	WELD TAB	OPTION	PACKAGING
	<b>-019</b> (Per Row)	<b>-1</b> = Up to 16 Gbps <b>-2</b> = 28 Gbps+	<b>-H</b> = 30 $\mu$ " (0.76 $\mu$ m) Gold on contact, Gold flash on tail (-1 Data Rate only) <b>-H</b> = 30 $\mu$ " (0.76 $\mu$ m) Gold on contact, Matte Tin on tail (-2 Data Rate only)			<b>-1</b> = Through-hole <b>-2</b> = Surface Mount (Data Rate -1 only)	Leave blank for -2 Data Rate <b>-A</b> = Alignment Pin (Available with Data Rate -1 only)	Leave blank for Tape & Reel <b>-FR</b> = Full Reel Tape & Reel (must order max. quantity per reel; contact Samtec for quantity breaks)

### UEC5

#### Board Mates:

ECUE, ECUO,  
PCUO, PCUE,  
ETUO



UEC5-019-2-X-D-RA-1

UEC5-019-1-X-D-RA-1-A

#### Note:

PCB footprints are not interchangeable for -1 and -2 data rate versions.

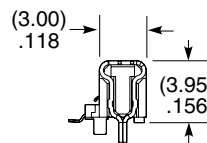
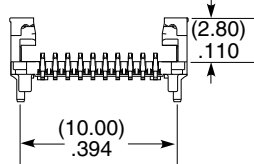
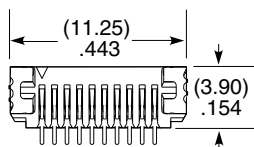
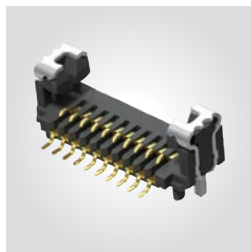
View complete specifications at: [samtec.com?UEC5-1](http://samtec.com?UEC5-1) & [samtec.com?UEC5-2](http://samtec.com?UEC5-2)

UCC8	NO. OF POSITIONS	1	PLATING OPTION	S	WELD TAB	A	PACKAGING
	<b>-010</b>		<b>-H</b> = 30 $\mu$ " (0.76 $\mu$ m) Gold on contact, Gold flash on tail		<b>-1</b> = Through-hole		Leave blank for Tape & Reel <b>-FR</b> = Full Reel Tape & Reel (must order max. quantity per reel; contact Samtec for quantity breaks)

### UCC8

#### Board Mates:

ECUE, ECUO,  
PCUO, PCUE,  
ETUO



#### Note:

Some sizes, styles and options are non-standard, non-returnable.

View complete specifications at: [samtec.com?UCC8](http://samtec.com?UCC8)

# Mouser Electronics

Authorized Distributor

Click to View Pricing, Inventory, Delivery & Lifecycle Information:

[Samtec:](#)

[UCC8-010-1-H-S-1-A](#)