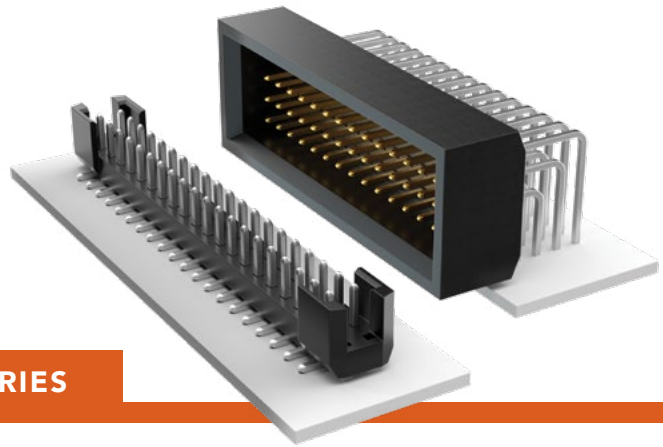


SHROUDED HEADERS

(2.00 mm) .0787" PITCH • TSH/TMMS SERIES



TSH

Mates:

CLT, SQT, SQW, ESQT,
TLE, SMM, MMS, PTF

TMMS

Mates:

SQT, SQW, ESQT

SPECIFICATIONS

Insulator Material:

Black Liquid Crystal Polymer

Terminal Material:

Phosphor Bronze

Plating:

Sn or Au over
50 μ" (1.27 μm) Ni

Operating Temp Range:

-55 °C to +105 °C with Tin;
-55 °C to +125 °C with Gold

PROCESSING

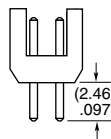
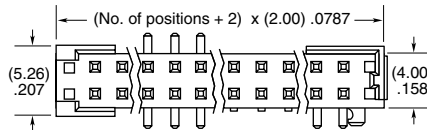
Lead-Free Solderable:

Yes

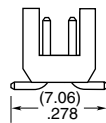
SMT Lead Coplanarity (TSH):

(0.15 mm) .006" max*
*(.004" stencil solution
may be available; contact
IPG@samtec.com)

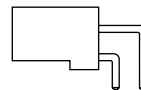
TSH	1	NO. PINS PER ROW	01	PLATING OPTION	ROW OPTION	OTHER OPTION
		05, 10, 15, 20, 25, 30, 35, 40, 45 (40 & 45 = -D & -RA only) (Standard sizes)		-F = Gold flash on post, Matte Tin on tail -L = 10 μ" (0.25 μm) Gold on post, Matte Tin on tail -T = Matte Tin	-D = Vertical Through-hole -DV = Vertical Surface Mount -RA = Right-angle Through-hole -DH = Horizontal Surface Mount	-LC = Locking Clip (-DV only) (Not available with -A) (Manual placement required) -A = Alignment Pin (-DV only) (Not available with -LC) -SL = Solder Locks (-DH only) -K = (4.50 mm) .177" DIA Polyimide Film Pick & Place Pad (-DH only) (Not available with 15 - 30 positions) -TR = Tape & Reel -FR = Full Reel Tape & Reel (must order max. quantity per reel; contact Samtec for quantity breaks)



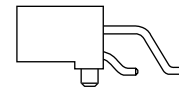
-D



-DV

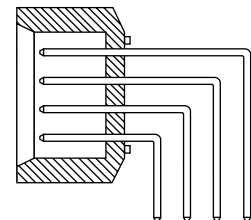
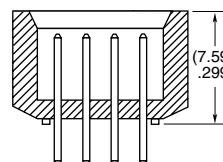
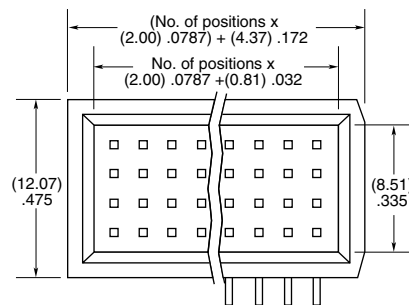


-RA



-DH

TMMS	1	NO. PINS PER ROW	01	PLATING OPTION	Q	OPTION	FS
		05, 10, 15, 20, 30, 40, 50		-F = Gold flash on post, Matte Tin on tail -L = 10 μ" (0.25 μm) Gold on post, Matte Tin on tail		-RA = Right-angle	



-RA

ALSO AVAILABLE

MOQ Required

Other sizes

Other plating

Note:

Some lengths, styles and options are non-standard, non-returnable.

Mouser Electronics

Authorized Distributor

Click to View Pricing, Inventory, Delivery & Lifecycle Information:

Samtec:

[TSH-125-01-L-DH-SL](#) [TSH-115-01-G-DV-A-TR](#) [TSH-110-01-S-DH-SL](#) [TSH-130-01-L-DH](#) [TSH-105-01-S-DH-SL](#)
[TSH-112-01-L-DH-SL-TR](#) [TSH-122-01-F-DH-TR](#) [TSH-135-01-L-DH-SL](#) [TSH-112-01-L-RA-SL](#) [TSH-125-01-F-DH](#)
[TSH-135-01-L-RA-SL](#) [TSH-105-01-L-RA](#) [TSH-110-01-S-DH](#) [TSH-130-01-T-DH](#) [TSH-105-01-T-DH-SL](#) [TSH-107-01-S-](#)
[DH](#) [TSH-110-01-L-DH](#) [TSH-120-01-T-RA](#) [TSH-135-01-T-RA](#) [TSH-110-01-L-DH-SL](#) [TSH-112-01-L-DH-SL](#) [TSH-125-](#)
[01-F-DH-TR](#) [TSH-130-01-S-DH](#) [TSH-108-01-L-DH](#) [TSH-115-01-T-DH-SL](#) [TSH-135-01-F-RA](#) [TSH-106-01-F-DH-SL](#)
[TSH-120-01-F-RA](#) [TSH-120-01-T-DH-SL](#) [TSH-140-01-S-RA](#) [TSH-105-01-T-DH-SL-TR](#) [TSH-106-01-L-DH](#) [TSH-120-](#)
[01-F-DH](#) [TSH-120-01-L-DH](#) [TSH-120-01-L-DH-SL](#) [TSH-105-01-L-RA-SL](#) [TSH-105-01-S-RA](#) [TSH-106-01-S-DH-SL](#)
[TSH-122-01-F-DH](#) [TSH-107-01-L-RA](#) [TSH-107-01-S-D](#) [TSH-110-01-S-DV](#) [TSH-120-01-L-D](#) [TSH-125-01-F-D](#) [TSH-](#)
[125-01-F-RA](#) [TSH-125-01-L-DV](#) [TSH-130-01-T-RA](#) [TSH-106-01-L-D](#) [TSH-106-01-L-DH-SL](#) [TSH-105-01-S-DH](#) [TSH-](#)
[110-01-F-DH](#) [TSH-110-01-F-DH-SL](#) [TSH-120-01-S-DH-SL](#) [TSH-125-01-S-RA](#) [TSH-105-01-L-DH-SL-TR](#) [TSH-105-01-](#)
[L-DV-LC](#) [TSH-110-01-L-DH-SL-K-TR](#) [TSH-115-01-L-DV-A](#) [TSH-115-01-S-DH-SL](#) [TSH-120-01-S-DV-A-TR](#) [TSH-120-](#)
[01-S-DV-LC](#) [TSH-130-01-F-RA](#) [TSH-115-01-F-D](#) [TSH-115-01-L-DH](#) [TSH-120-01-F-DH-SL](#) [TSH-120-01-T-D](#) [TSH-](#)
[122-01-S-DH-SL-TR](#) [TSH-130-01-S-DH-SL](#) [TSH-125-01-L-DH](#) [TSH-125-01-L-RA](#) [TSH-135-01-S-RA](#) [TSH-140-01-S-](#)
[D](#) [TSH-105-01-T-D](#) [TSH-107-01-S-DV-LC](#) [TSH-125-01-S-DH-SL](#) [TSH-130-01-T-DH-TR](#) [TSH-105-01-L-DH](#) [TSH-](#)
[105-01-T-DH-TR](#) [TSH-107-01-T-DV](#) [TSH-115-01-F-DH-SL](#) [TSH-120-01-F-D](#) [TSH-105-01-S-RA-SL](#) [TSH-108-01-S-](#)
[DH](#) [TSH-112-01-L-DV](#) [TSH-120-01-L-RA](#) [TSH-120-01-S-DH](#) [TSH-125-01-S-D](#) [TSH-125-01-S-DH-SL-TR](#) [TSH-130-](#)
[01-S-RA](#) [TSH-105-01-T-RA](#) [TSH-110-01-L-RA](#) [TSH-115-01-S-RA-SL](#) [TSH-120-01-L-DV-A](#) [TSH-120-01-S-D](#) [TSH-](#)
[125-01-S-DV-A](#) [TSH-110-01-L-RA-SL](#) [TSH-110-01-S-DH-SL-TR](#) [TSH-115-01-S-RA](#) [TSH-120-01-S-RA](#) [TSH-122-01-](#)
[S-DH-SL](#)