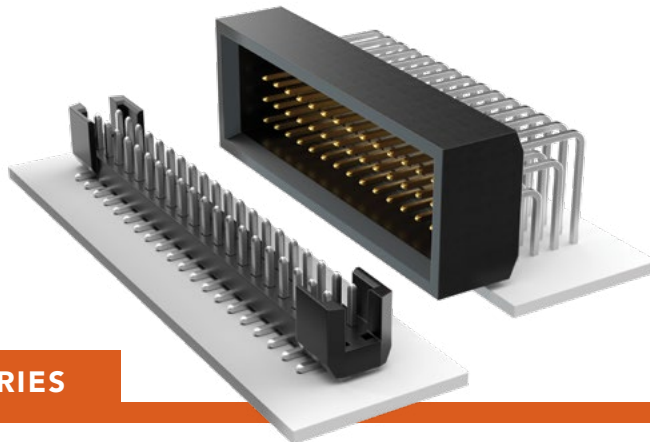


# SHROUDED HEADERS

(2.00 mm) .0787" PITCH • TSH/TMMS SERIES



## TSH

### Mates:

CLT, SQT, SQW, ESQT,  
TLE, SMM, MMS, PTF

## TMMS

### Mates:

SQT, SQW, ESQT

## SPECIFICATIONS

### Insulator Material:

Black Liquid Crystal Polymer

### Terminal Material:

Phosphor Bronze

### Plating:

Sn or Au over  
50 μ" (1.27 μm) Ni

### Operating Temp Range:

-55 °C to +105 °C with Tin;  
-55 °C to +125 °C with Gold

## PROCESSING

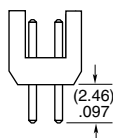
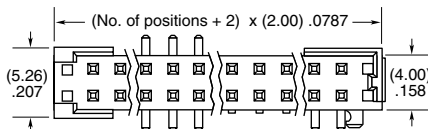
### Lead-Free Solderable:

Yes

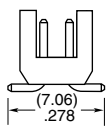
### SMT Lead Coplanarity (TSH):

(0.15 mm) .006" max\*  
\*(.004" stencil solution  
may be available; contact  
IPG@samtec.com)

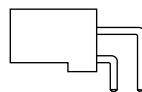
TSH	1	NO. PINS PER ROW	01	PLATING OPTION	ROW OPTION	OTHER OPTION
		05, 10, 15, 20, 25, 30, 35, 40, 45 (40 & 45 = -D & -RA only) (Standard sizes)		-F = Gold flash on post, Matte Tin on tail  -L = 10 μ" (0.25 μm) Gold on post, Matte Tin on tail  -T = Matte Tin	-D = Vertical Through-hole  -DV = Vertical Surface Mount  -RA = Right-angle Through-hole  -DH = Horizontal Surface Mount	-LC = Locking Clip (-DV only) (Not available with -A) (Manual placement required)  -A = Alignment Pin (-DV only) (Not available with -LC)  -SL = Solder Locks (-DH only)  -K = (4.50 mm) .177" DIA Polyimide Film Pick & Place Pad (-DH only) (Not available with 15 - 30 positions)  -TR = Tape & Reel  -FR = Full Reel Tape & Reel (must order max. quantity per reel; contact Samtec for quantity breaks)



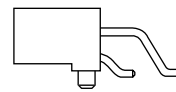
-D



-DV

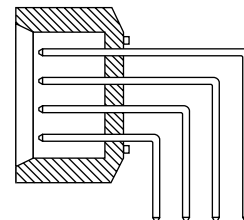
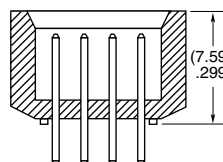
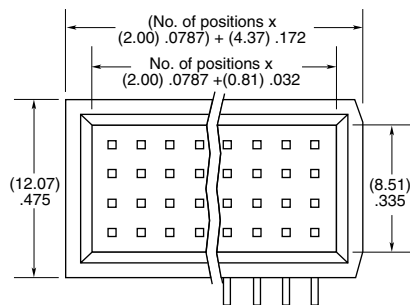


-RA



-DH

TMMS	1	NO. PINS PER ROW	01	PLATING OPTION	Q	OPTION	FS
		05, 10, 15, 20, 30, 40, 50		-F = Gold flash on post, Matte Tin on tail  -L = 10 μ" (0.25 μm) Gold on post, Matte Tin on tail		-RA = Right-angle	



-RA

## ALSO AVAILABLE

MOQ Required

Other sizes

Other plating

### Note:

Some lengths, styles and  
options are non-standard,  
non-returnable.

# Mouser Electronics

Authorized Distributor

Click to View Pricing, Inventory, Delivery & Lifecycle Information:

[Samtec:](#)

[TSH-107-01-L-D](#)