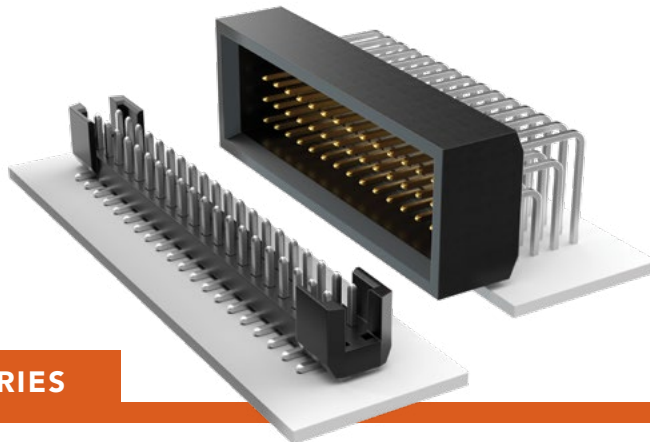


SHROUDED HEADERS

(2.00 mm) .0787" PITCH • TSH/TMMS SERIES



TSH

Mates:

CLT, SQT, SQW, ESQT,
TLE, SMM, MMS, PTF

TMMS

Mates:

SQT, SQW, ESQT

SPECIFICATIONS

Insulator Material:

Black Liquid Crystal Polymer

Terminal Material:

Phosphor Bronze

Plating:

Sn or Au over
50 μ" (1.27 μm) Ni

Operating Temp Range:

-55 °C to +105 °C with Tin;
-55 °C to +125 °C with Gold

PROCESSING

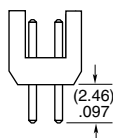
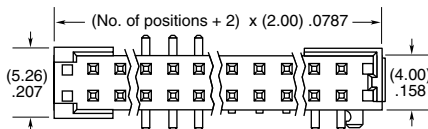
Lead-Free Solderable:

Yes

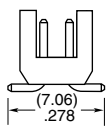
SMT Lead Coplanarity (TSH):

(0.15 mm) .006" max*
*(.004" stencil solution
may be available; contact
IPG@samtec.com)

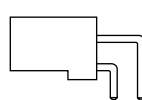
TSH	1	NO. PINS PER ROW	01	PLATING OPTION	ROW OPTION	OTHER OPTION
		05, 10, 15, 20, 25, 30, 35, 40, 45 (40 & 45 = -D & -RA only) (Standard sizes)		-F = Gold flash on post, Matte Tin on tail -L = 10 μ" (0.25 μm) Gold on post, Matte Tin on tail -T = Matte Tin	-D = Vertical Through-hole -DV = Vertical Surface Mount -RA = Right-angle Through-hole -DH = Horizontal Surface Mount	-LC = Locking Clip (-DV only) (Not available with -A) (Manual placement required) -A = Alignment Pin (-DV only) (Not available with -LC) -SL = Solder Locks (-DH only) -K = (4.50 mm) .177" DIA Polyimide Film Pick & Place Pad (-DH only) (Not available with 15 - 30 positions) -TR = Tape & Reel -FR = Full Reel Tape & Reel (must order max. quantity per reel; contact Samtec for quantity breaks)



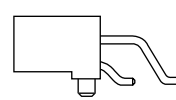
-D



-DV

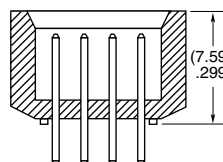
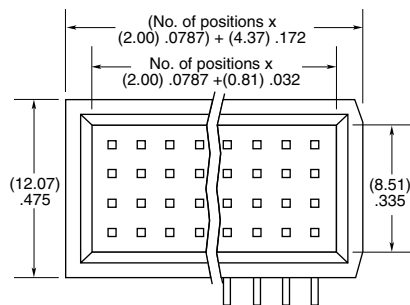


-RA

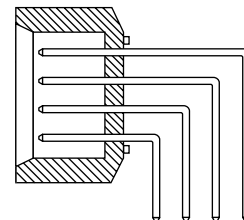


-DH

TMMS	1	NO. PINS PER ROW	01	PLATING OPTION	Q	OPTION	FS
		05, 10, 15, 20, 30, 40, 50		-F = Gold flash on post, Matte Tin on tail -L = 10 μ" (0.25 μm) Gold on post, Matte Tin on tail		-RA = Right-angle	



(7.59) .299



-RA

ALSO AVAILABLE

MOQ Required

Other sizes

Other plating

Note:

Some lengths, styles and
options are non-standard,
non-returnable.

Mouser Electronics

Authorized Distributor

Click to View Pricing, Inventory, Delivery & Lifecycle Information:

[Samtec:](#)

[TSH-105-01-F-DV](#)