

(2.54 mm) .100"

TS, TD, HTS SERIES

PRECISION MACHINED TERMINAL STRIPS

SPECIFICATIONS

For complete specifications see www.samtec.com?TS, www.samtec.com?TD or www.samtec.com?HTS

Insulator Material:
Black G.F. Polyester (TS, TD)
Black Liquid Crystal Polymer (HTS)

Terminal Material:
Brass, except Style G is Phosphor Bronze

Plating:
Au over 50 μ" (1.27 μm) Ni or Sn over 100 μ" (2.54 μm) Cu or 50 μ" (1.27 μm) Ni

Operating Temp Range:
-55 °C to +125 °C with Gold
-55 °C to +105 °C with Tin

RoHS Compliant:
Yes

Lead-Free Solderable:
HTS: Yes

TS, TD: No, Lead Wave Only

Mates with:
SS, SD, HSS, SL, SDL, ESS, ESD

TYPE STRIP

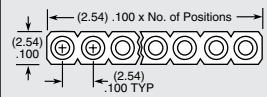
1

NO. PINS PER ROW

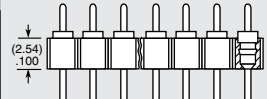
PLATING OPTION

LEAD STYLE

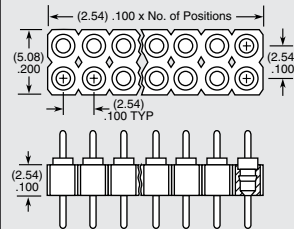
TS
= Single Row Terminal Strip



HTS
= Single Row High Temp Terminal Strip



TD
= Double Row Terminal Strip



-G
= 20 μ" (0.51 μm) Gold
Except -J & -L are 10 μ" (0.25 μm) Gold

-T
= Tin

01 thru 32
= TS Series

01 thru 36
= HTS & TD Series

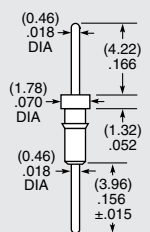
Note:
Some lengths, styles and options are non-standard, non-returnable.

RECOGNITIONS

For complete scope of recognitions see www.samtec.com/quality

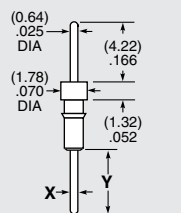


-AA



Component No. = T-1R5-

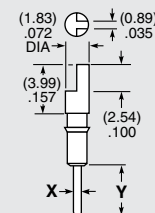
-A, -A-1, -A-2



-A Component No. = T-1R0-
-A-X Component No. = T-1R7

LEAD STYLE	X (DIA)	Y (±.015)
-A	(0.46) .018	(3.96) .156
-A-1	(0.64) .025	(5.33) .210
-A-2	(0.89) .035	(5.33) .210

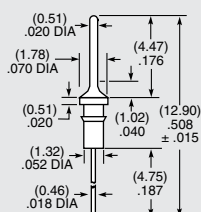
-C, -C-1, -C-2



-C Component No. = T-1R2-
-C-X Component No. = T-1R9-

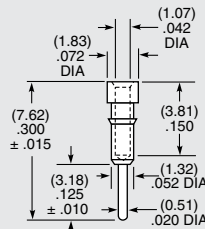
LEAD STYLE	X (DIA)	Y (±.015)
-C	(0.46) .018	(3.96) .156
-C-1	(0.64) .025	(5.33) .210
-C-2	(0.89) .035	(5.33) .210

-G-1



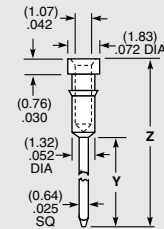
Component No. = T-1R5-

-J



Component No. = S-1P1-

-L-1, -L-2, -L-3



Component No. = S-1W1

LEAD STYLE	X (DIA)	Y (±.015)
-L-1	(12.95) .510	(17.86) .703
-L-2	(9.14) .360	(14.05) .553
-L-3	(6.60) .260	(11.51) .453

Mouser Electronics

Authorized Distributor

Click to View Pricing, Inventory, Delivery & Lifecycle Information:

Samtec:

[TS-128-T-D-1-1](#) [TS-116-T-D-1-1](#) [TS-102-G-D-1-1](#) [TS-102-T-D-1-2](#) [TS-103-G-D-1-2](#) [TS-107-T-D-1-2](#) [TS-115-G-D-1-1](#) [TS-115-G-D-1-2](#) [TS-120-G-D-1-1](#) [TS-107-T-D-1-1](#) [TS-109-T-D-1-1](#) [TS-118-G-D-1-1](#) [TS-101-T-D-1-2](#) [TS-103-G-D-1-1](#) [TS-103-T-D-1-2](#) [TS-107-G-D-1-2](#) [TS-111-G-D-1-2](#) [TS-116-G-D-1-1](#) [TS-119-G-D-1-2](#) [TS-107-G-D-1-1](#) [TS-104-G-D-1-1](#) [TS-104-G-D-1-2](#) [TS-106-T-D-1-1](#) [TS-112-T-D-1-2](#) [TS-114-G-D-1-1](#) [TS-114-G-D-1-2](#) [TS-110-G-D-1-2](#) [TS-110-T-D-1-2](#) [TS-112-G-D-1-2](#) [TS-120-G-D-1-2](#) [TS-120-T-D-1-1](#) [TS-111-T-D-1-2](#) [TS-119-G-D-1-1](#) [TS-109-T-D-1-2](#) [TS-111-G-D-1-1](#) [TS-112-T-D-1-1](#) [TS-117-G-D-1-1](#) [TS-117-G-D-1-2](#) [TS-118-T-D-1-1](#) [TS-104-T-D-1-2](#) [TS-108-G-D-1-2](#) [TS-109-G-D-1-2](#) [TS-114-T-D-1-2](#) [TS-116-T-D-1-2](#) [TS-118-G-D-1-2](#) [TS-102-G-D-1-2](#) [TS-108-G-D-1-1](#) [TS-109-G-D-1-1](#) [TS-110-G-D-1-1](#) [TS-121-T-D-1-1](#) [TS-101-T-D-1-1](#) [TS-105-T-D-1-2](#) [TS-106-G-D-1-2](#) [TS-116-G-D-1-2](#) [TS-112-G-D-1-1](#) [TS-114-T-D-1-1](#) [TS-101-G-D-1-1](#) [TS-101-G-D-1-2](#) [TS-106-G-D-1-1](#) [TS-110-T-D-1-1](#) [TS-113-G-D-1-1](#) [TS-113-G-D-1-2](#) [TS-117-T-D-1-2](#) [TS-121-G-D-1-2](#) [TS-121-T-D-1-2](#) [TS-115-T-D-1-2](#) [TS-118-T-D-1-2](#) [TS-120-T-D-1-2](#) [TS-105-G-D-1-1](#) [TS-105-G-D-1-2](#) [TS-103-T-D-1-1](#) [TS-106-T-D-1-2](#) [TS-108-T-D-1-2](#) [TS-102-T-D-1-1](#) [TS-124-G-D-1-2](#) [TS-123-G-D-1-2](#) [TS-126-G-D-1-2](#) [TS-128-G-D-1-1](#) [TS-130-G-D-1-1](#) [TS-125-G-D-1-1](#) [TS-126-T-D-1-2](#) [TS-128-T-D-1-2](#) [TS-122-G-D-1-1](#) [TS-122-G-D-1-2](#) [TS-124-T-D-1-2](#) [TS-125-G-D-1-2](#) [TS-127-G-D-1-2](#) [TS-132-G-D-1-1](#) [TS-125-T-D-1-1](#) [TS-130-G-D-1-2](#) [TS-130-T-D-1-2](#) [TS-132-G-D-1-2](#) [TS-132-T-D-1-1](#) [TS-132-T-D-1-2](#) [TS-124-T-D-1-1](#) [TS-125-T-D-1-2](#) [TS-128-G-D-1-2](#) [TS-131-G-D-1-2](#) [TS-124-G-D-1-1](#) [TS-108-T-D-1-1](#)