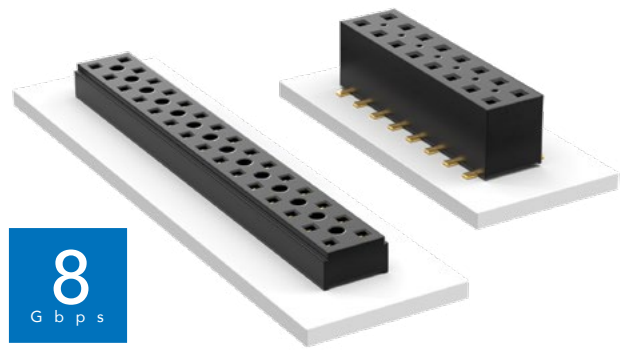


# COST-EFFECTIVE & DUAL WIPE SOCKETS

(2.00 mm) .0787" PITCH • TLE/CLT SERIES



## TLE

### Mates:

TMMH, TMM, MTMM,  
MMT, TW, LTMM, ZLTMM,  
TCMD, TSH

## CLT

### Mates:

TMM, TMMH, MTMM,  
MMT, TW, TSH

## SPECIFICATIONS

### TLE

#### Insulator Material:

Black Liquid Crystal Polymer

#### Contact Material:

Phosphor Bronze

#### Plating:

Au over 50  $\mu$ " (1.27  $\mu$ m) Ni

#### Current Rating (TLE/TMMH):

3.2 A per pin

(2 pins powered)

#### Operating Temp Range:

-55 °C to +125 °C

#### Insertion Depth:

(2.08 mm) .082" to

(4.37 mm) .172" with

(0.38 mm) .015" wipe,

pass-through, or

(3.35 mm) .132" min

for bottom entry

### CLT

Same as TLE except:

#### Plating:

Sn or Au over 50  $\mu$ " (1.27  $\mu$ m) Ni

#### Current Rating (TMMH/CLT):

4.1 A per pin

(2 pins powered)

#### Insertion Depth:

Top Entry=

(1.40 mm) .055" minimum

Bottom Entry=

(2.57 mm) .101" minimum

(add board thickness for

correct post OAL)

#### Max Cycles:

100 with 10  $\mu$ " (0.25  $\mu$ m) Au

## PROCESSING

### TLE

#### Lead-Free Solderable:

Yes

#### SMT Lead Coplanarity:

(0.10 mm) .004" max (02-26)

(0.15 mm) .006" max (27-50)\*

\*(.004" stencil solution

may be available; contact

ipg@samtec.com)

### CLT

Same as TLE except:

#### SMT Lead Coplanarity:

(0.10 mm) .004" max (02-25)

(0.15 mm) .006" max (26-34)\*

(0.20 mm) .008" max (35-50)\*

\*(.004" stencil solution

may be available; contact

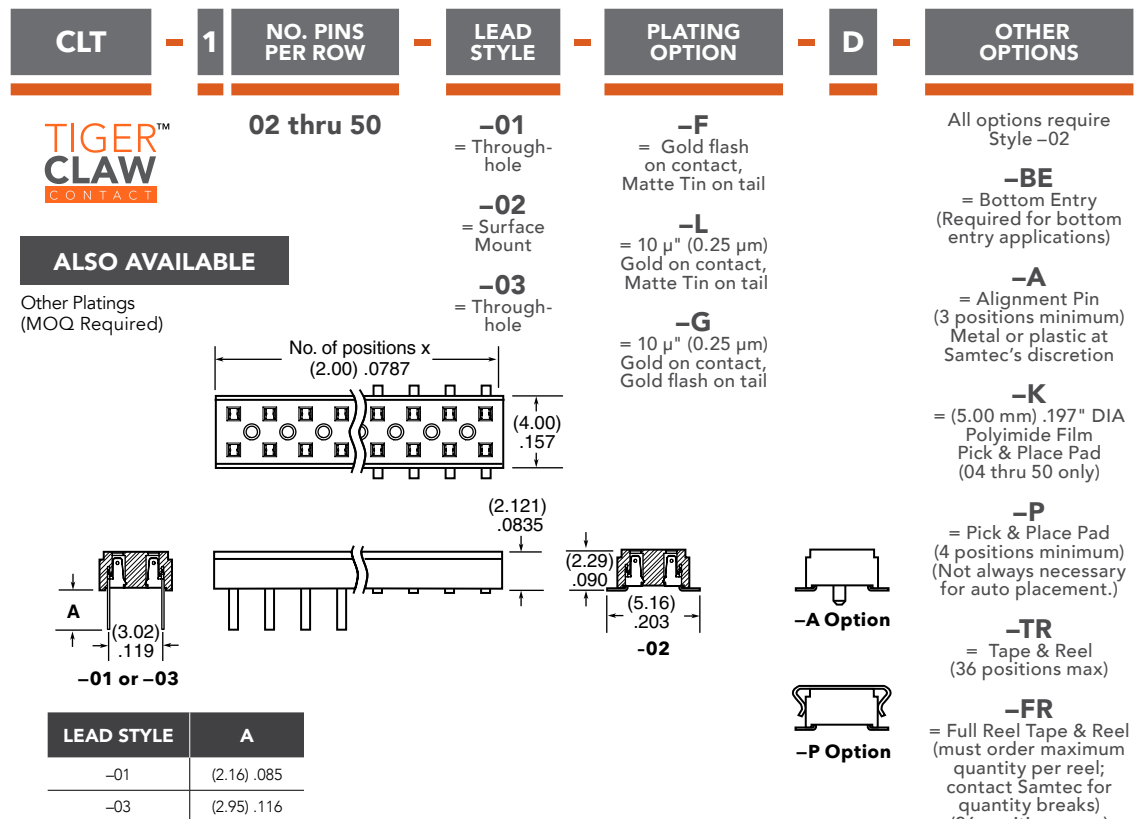
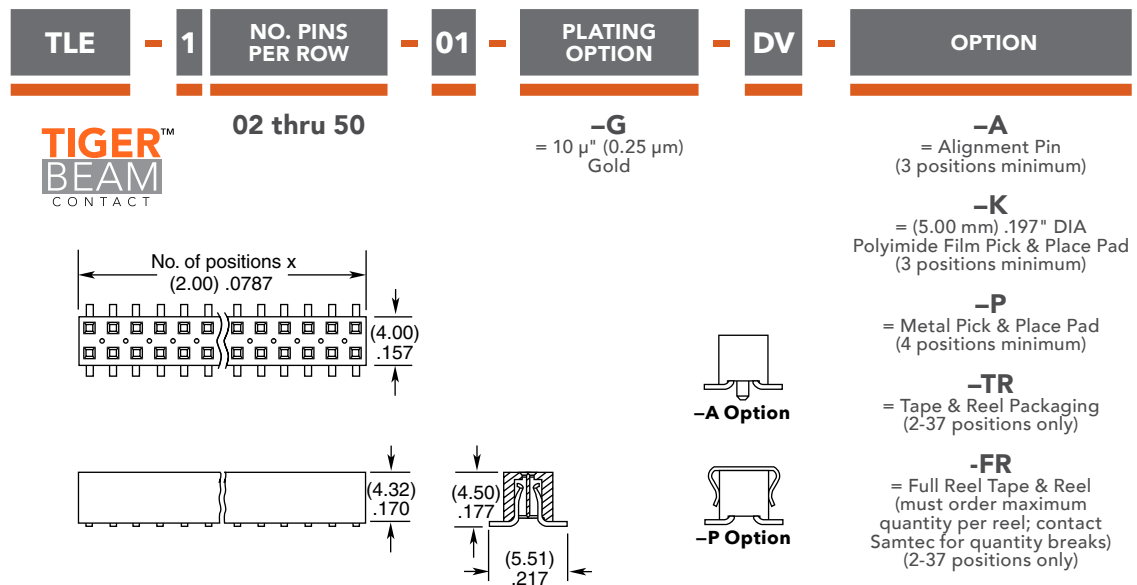
ipg@samtec.com)

#### Note:

Some lengths, styles and

options are non-standard,

non-returnable.



# Mouser Electronics

Authorized Distributor

Click to View Pricing, Inventory, Delivery & Lifecycle Information:

[Samtec:](#)

[TLE-103-01-G-DV-A](#)