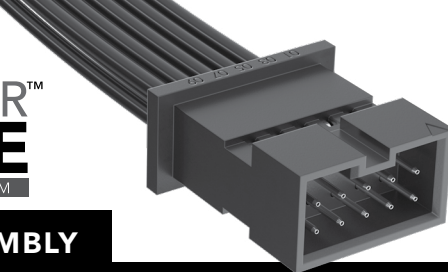




**TIGER™
EYE**
SYSTEM



(2.00 mm) .0787" PITCH • DISCRETE WIRE CABLE ASSEMBLY

| SERIES | PINS PER ROW | WIRE GAUGE | PLATING OPTION | ASSEMBLED LENGTH | END OPTIONS | END 2 OPTIONS |
|---|--|---|---|--|---|---|
| T2SD = Double Row PVC Cable | -05, -07, -10, -15, -20, -25, -30 (Standard sizes) | -24 -24C = Color Coded Cable (T2SD only) | -L = 10 μ" (0.25 μm) Gold on contact | -"XX.XX" = Wire Length in Inches -S = (76.3 mm) 03.00" min. -D = (82.55 mm) 03.25" min. | -S = Single End -D = Double End -T = Transfer End (Socket on end 2) -TR = Transfer End with Retention Latch on Socket | (Only available with -D, -T & -TR) (See Chart for pin configuration) -NUS = Notch up, straight -NDS = Notch down, straight -NUX = Notch up, crossed -NDX = Notch down, crossed |
| T2SDT = Double Row Blue *Teflon™ Fluoropolymer Cable (24, 28, 30 AWG only) | | -26 -28 -30 | | | | |

T2SD(T)

Board Mates:

T2M (Requires -T or -TR),
S2M

SPECIFICATIONS

Insulator Material:

Black LCP

Terminal Material:

Phosphor Bronze

Plating:

Au over 50 μ" (1.27 μm) Ni

Wire:

24, 26, 28 or 30 AWG

Current Rating (T2SD/S2M):

2.6 A per pin
(2 pins powered)

Operating Temp Range:

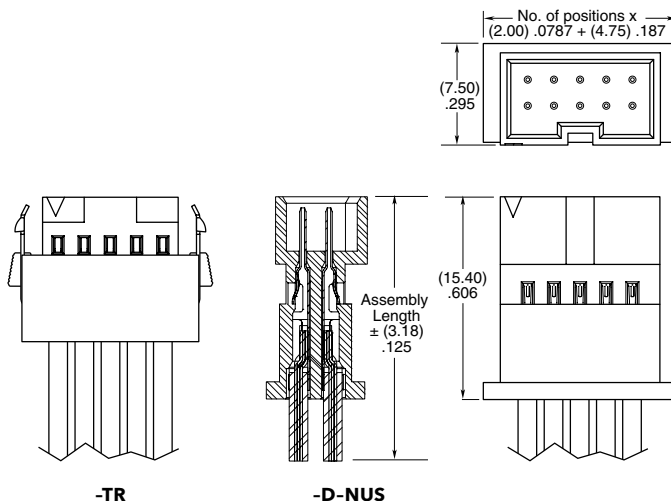
-10 °C to +105 °C (PVC)

-40 °C to +125 °C

(*Teflon™ Fluoropolymer)

Voltage Rating:

350 VAC/ 495 VDC



*Teflon™ is a trademark of The Chemours Company FC, LLC used under license by Samtec.

Notes:

Teflon™ Fluoropolymer cable is intended for crimp only. Contact Samtec for solderable cable applications.

For wiring option information refer to drawings on web.

Some lengths, styles and options are non-standard, non-returnable.

| END 1 OPTION | PIN CONFIGURATION | | | |
|-----------------|---------------------|-------------------|-------------------|---------------------|
| | END 2 -NUS | END 2 -NDS | END 2 -NUX | END 2 -NDX |
| -D | Pin 1 to Pin N-1 | Pin 1 to Pin 2 | Pin 1 to Pin N | Pin 1 to Pin 1 |
| -T & -TR | Pin 1 to Pin 1 | Pin 1 to Pin N | Pin 1 to Pin 2 | Pin 1 to Pin N-1 |

| -24C CABLE COLOR CODING | |
|----------------------------|--------|
| PIN | COLOR |
| 1 | BROWN |
| 2 | RED |
| 3 | ORANGE |
| 4 | YELLOW |
| 5 | GREEN |
| 6 | VIOLET |
| 7 | GRAY |
| 8 | WHITE |
| 9 | BLACK |
| 10 | BLUE |
| ETC | REPEAT |

View complete specifications at: samtec.com?T2SD & samtec.com?T2SDT

Mouser Electronics

Authorized Distributor

Click to View Pricing, Inventory, Delivery & Lifecycle Information:

[Samtec:](#)

[T2SD-40-24C-L-24.00-S](#) [T2SD-33-24-L-03.00-S](#)