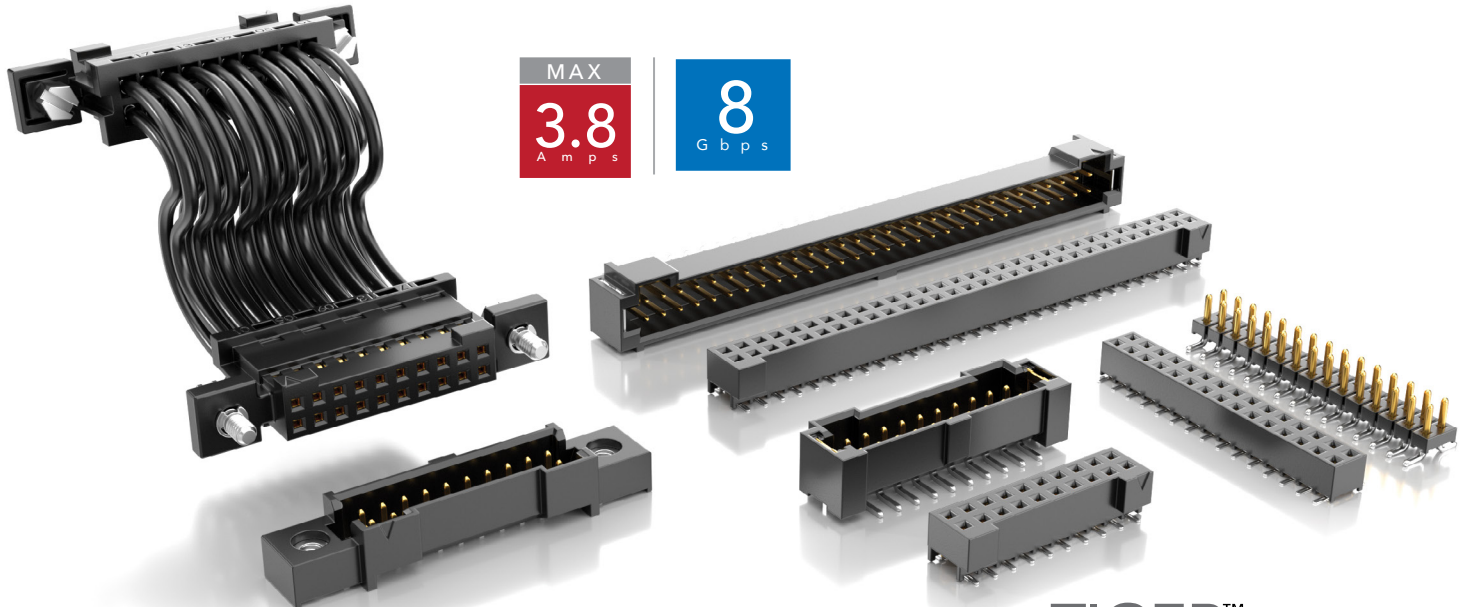


RUGGED TIGER EYE™ SYSTEMS

(2.00 mm) .0787" PITCH



MAX
3.8
A m p s

8
G b p s

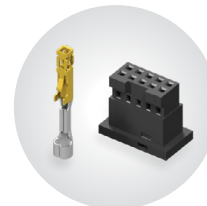
FEATURES & BENEFITS

- Rugged Tiger Eye™ contact system for high reliability
- Wide range of stack heights (SMM/TMM Series)
- Right-angle mating headers available
- Optional metal latching, screw downs, weld tabs and locking clips
- Surface mount or through-hole
- Discrete wire assemblies available in 24-30 AWG PVC or *Teflon™ Fluoropolymer (See page 240). Contact asp@samtec.com for custom solutions
- Severe Environment Testing qualified (S2M/T2M); aligns with MIL-DTL-55302. Visit samtec.com/set

*Teflon™ is a trademark of The Chemours Company FC, LLC used under license by Samtec.



Optional strain relief and variety of wiring options



Components (ISD2/CC81) & tooling available: samtec.com/tooling

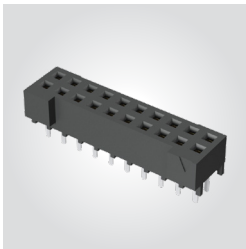
KEY SPECIFICATIONS (S2M/T2M)

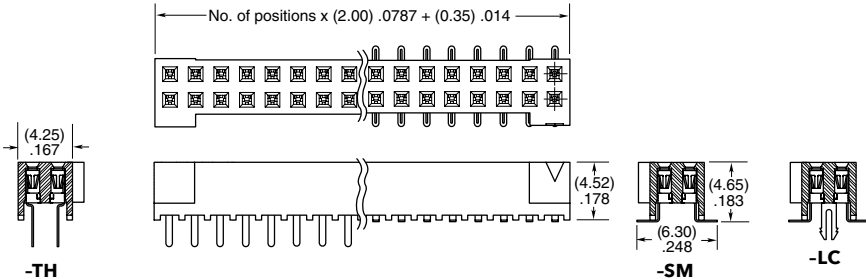
| STACK HEIGHTS | INSULATOR MATERIAL | CONTACT MATERIAL | PLATING | OPERATING TEMP RANGE | CURRENT RATING | MAX. CYCLES | VOLTAGE RATING | LEAD-FREE SOLDERABLE |
|---------------|--------------------|-------------------------------------|-------------------------------------|----------------------|---------------------------|-----------------------------|---------------------|----------------------|
| 6 & 7 mm | Black LCP | BeCu (S2M) Phosphor Bronze (T2M) | Au or Sn over 50 μ" (1.27 μm) Ni | -55 °C to +125 °C | 2.6 A (2 pins powered) | 100 with 10 μ" (0.25 μm) Au | 350 VAC/ 495 VDC | Yes |

(2.00 mm) .0787" PITCH • HIGH-RELIABILITY CABLE INTERCONNECTS

| SERIES | 1 | NO. OF POSITIONS | LEAD STYLE | PLATING OPTION | D | OPTIONS | PACKAGING |
|----------------------|---|--|---|--|---|--|--|
| S2M Socket | | 05, 07, 10, 15, 20, 25, 30 (Per Row) | -01 = Through-hole -02 = Surface Mount | -F = Gold flash on contact, Matte Tin on tail -L = 10 μ" (0.25 μm) Gold on contact, Matte Tin on tail | | -K = (5.50 mm) .217" DIA Polyimide film Pick & Place Pad (-02 only) -LC = Locking Clip (Manual placement required) (-02 only) -DS = Screw Down (N/A with -LC) (mates with -T2M-DS) | Leave blank for tube packaging -TR = Tape & Reel (-02 only) -FR = Full Reel Tape & Reel (must order max. quantity per reel; contact Samtec for quantity breaks) (-02 only) |

S2M
Board Mates:
T2M
Cable Mates:
T2SD

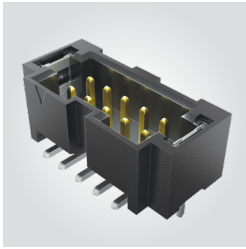


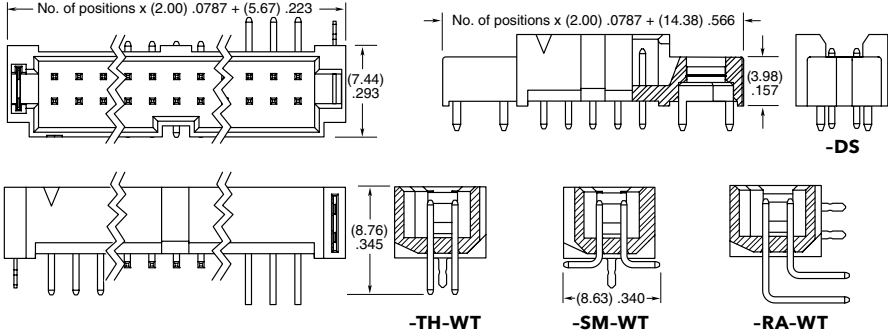


View complete specifications at: samtec.com?S2M

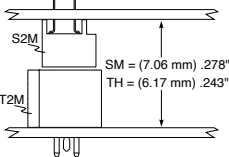
| SERIES | 1 | NO. OF POSITIONS | 01 | PLATING OPTION | D | TAIL OPTION | OTHER OPTIONS | PACKAGING |
|----------------------|---|--|----|---|---|--|--|--|
| T2M Header | | 05, 07, 10, 15, 20, 25, 30 (Per Row) | | -L = 10 μ" (0.25 μm) Gold on contact, Matte Tin on tail | | -TH = Through-hole -RA = Right-angle -SM = Surface Mount | -WT = Weld Tab (S2SD & S2SDT, -SR/-DR required mate) -DS = Screw Down (N/A with -RA) (mates with -S2M-DS, S2SD/S2SDT -SS/-DS option) -K = (7.50 mm) .295" DIA Polyimide film Pick & Place Pad (-SM only) | Leave blank for tube packaging -TR = Tape & Reel (-SM only) -FR = Full Reel Tape & Reel (must order max. quantity per reel; contact Samtec for quantity breaks) (-SM only) |

T2M
Board Mates:
S2M
Cable Mates:
S2SD, S2SDT





MATED HEIGHT



Notes:
Severe Environment Testing qualified; aligns with MIL-DTL-55302. Visit samtec.com/set

Some lengths, styles and options are non-standard, non-returnable.

View complete specifications at: samtec.com?T2M

Mouser Electronics

Authorized Distributor

Click to View Pricing, Inventory, Delivery & Lifecycle Information:

[Samtec:](#)

[T2M-107-01-L-SM-WT](#)