

(0.50 mm) .0197"

SS5, ST5 SERIES

# ULTRA-FINE PITCH SOCKET

SS5 Mates with:  
ST5

ST5 Mates with:  
SS5

## SPECIFICATIONS

For complete specifications and recommended PCB layouts see [www.samtec.com?SS5](http://www.samtec.com?SS5) or [www.samtec.com?ST5](http://www.samtec.com?ST5)

**Insulator Material:**  
Black LCP

**Contact Material:**  
Phosphor Bronze

**Plating:**

Au or Sn over  
50 μ" (1.27 μm) Ni

**Operating Temp Range:**  
-55 °C to +125 °C

**Current Rating:**  
1.6 A per pin  
(2 pins powered)

**RoHS Compliant:**  
Yes

## PROCESSING

**Lead-Free Solderable:**  
Yes

**SMT Lead Coplanarity:**  
(0.10 mm) .004" max

## RECOGNITIONS

For complete scope of recognitions see [www.samtec.com/quality](http://www.samtec.com/quality)



FILE NO. E111594

MATED HEIGHT*		
ST5 LEAD STYLE	SS5 LEAD STYLE	
	-3.00	-3.50
-1.00	(4.00) .157	(4.50) .177
-1.50	(4.50) .177	(5.00) .197

\*Processing conditions will affect mated height.

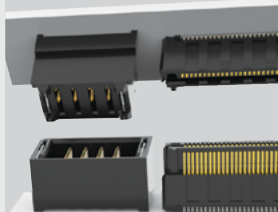
## ALSO AVAILABLE (MOQ Required)

- Other lead styles

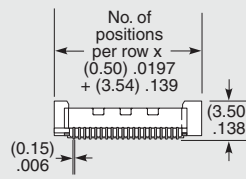
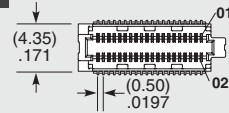
**Note:**  
Some lengths, styles and options are non-standard, non-returnable.

SS5	NO. OF POSITIONS	LEAD STYLE	PLATING OPTION	D	K	TR
	-10, -15, -20, -30, -40, -50, -60, -70, -80 (Per Row)	-3.00 = 3.00 mm -3.50 = 3.50 mm	-L = 10 μ" (0.25 μm) Gold on contact, Matte Tin on tail		(Required in callout) -K = (3.50 mm) .138" DIA Polyimide Film Pick & Place Pad	(Required in callout) -TR = Tape & Reel

## POWER/SIGNAL APPLICATION



Compatible with UMPT/UMPS for flexible two-piece power/signal solutions



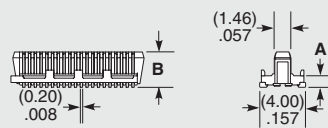
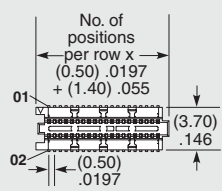
LEAD STYLE	A	B
-3.00	(2.85) .112	(3.50) .138
-3.50	(3.35) .132	(4.00) .157

## HIGH-SPEED CHANNEL PERFORMANCE

SS5/ST5 @ 4 mm Mated Stack Height  
Rating based on Samtec reference channel.  
For full SI performance data visit [Samtec.com](http://Samtec.com) or contact [SIG@samtec.com](mailto:SIG@samtec.com)

PAM 4  
**56**  
Gbps

ST5	NO. OF POSITIONS	LEAD STYLE	PLATING OPTION	D	P	TR
	-10, -15, -20, -30, -40, -50, -60, -70, -80 (Per Row)	-1.00 = 1.00 mm -1.50 = 1.50 mm	-L = 10 μ" (0.25 μm) Gold on contact, Matte Tin on tail		(Required in callout) -P = Pick & Place Pad	(Required in callout) -TR = Tape & Reel



LEAD STYLE	A	B
-1.00	(1.00) .039	(3.08) .121
-1.50	(1.50) .059	(3.58) .141

Due to technical progress, all designs, specifications and components are subject to change without notice.

# Mouser Electronics

Authorized Distributor

Click to View Pricing, Inventory, Delivery & Lifecycle Information:

## Samtec:

[SS5-30-3.00-L-D-K-TR](#) [SS5-20-3.00-L-D-K-TR](#) [SS5-10-3.50-L-D-K-TR](#) [SS5-50-3.00-L-D-K-TR](#) [SS5-20-3.50-L-D-K-TR](#) [SS5-10-3.00-L-D-K-TR](#) [SS5-80-3.50-L-D-K-TR](#) [SS5-40-3.00-L-D-K-TR](#) [SS5-15-3.00-L-D-K-TR](#) [SS5-80-3.00-L-D-K-TR](#) [SS5-30-3.50-L-D-K-TR](#) [SS5-60-3.50-L-D-K-TR](#) [SS5-15-3.50-L-D-K-TR](#) [SS5-40-3.50-L-D-K-TR](#) [SS5-60-3.00-L-D-K-TR](#) [SS5-50-3.50-L-D-K-TR](#) [SS5-70-3.00-L-D-K-TR](#)