

PRECISION BOARD STACKING STANDOFF

SO SERIES

SO

Use With:

QXH, QXE, QXS,
QXSS, QRX8, ERX5,
ERX6, ERX8, LSHM,
LSS, LSEM, SX4, SX5, XLH

SPECIFICATIONS

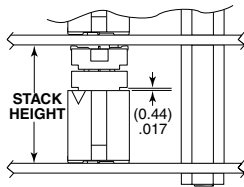
Material:

Aluminum

Locking Compound:

Nylon

INDUSTRY STANDARD SOLUTIONS



Requires Standoff
SO-1524-03-01-01-L or
JSOM-1524-02 for 15.24 mm
or SO-2200-03-01-01-L
for 22 mm board spacing.

Connectors designed to not
fully seat when mated.

For more information on the JSOM,
visit samtec.com?JSOM

| INDUSTRY STANDARD | INTERCONNECTS | | | |
|-------------------|---------------|---------------|-------|--------------|
| | TERMINAL | SOCKET | BANKS | STACK HEIGHT |
| SUMIT™ | ASP-129637-01 | ASP-129646-01 | 1 | 15.24 mm |
| PCI/104-Express™ | ASP-129637-03 | ASP-129646-03 | 3 | 15.24 mm |
| PCI/104-Express™ | ASP-129637-13 | ASP-129646-22 | 1 | 15.24 mm |
| PCI/104-Express™ | ASP-142781-01 | ASP-129646-01 | 1 | 22 mm |
| PCI/104-Express™ | ASP-142781-02 | ASP-129646-02 | 2 | 22 mm |
| PCI/104-Express™ | ASP-142781-03 | ASP-129646-03 | 3 | 22 mm |

ALSO AVAILABLE

MOQ Required

Other heights
Stainless Steel
Locking compound removed
Other materials and threading
No Hardware

Note:

Some sizes, styles and
options are non-standard,
non-returnable.

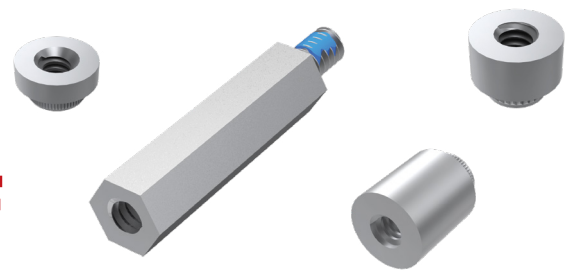
-01 LEAD STYLE

-02 LEAD STYLE

-03 LEAD STYLE

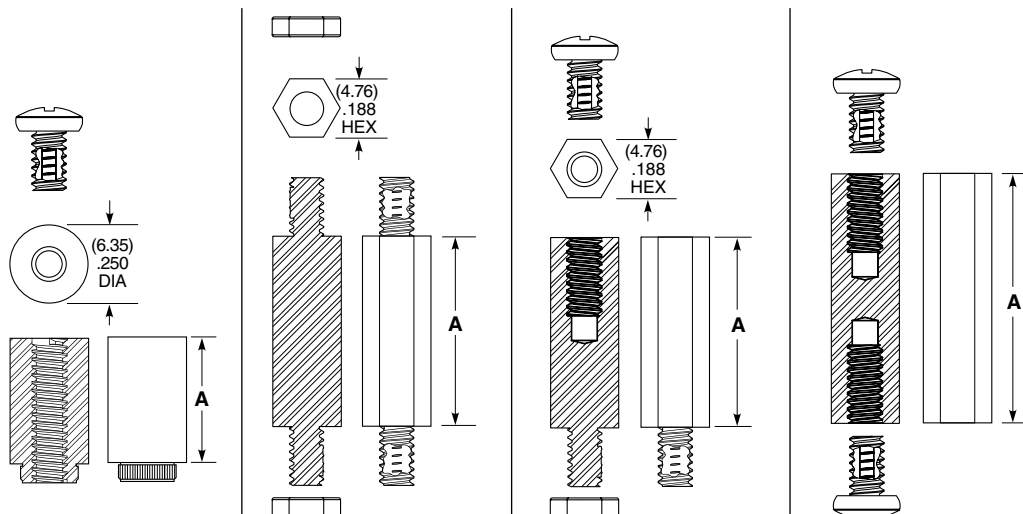
-05 LEAD STYLE

Components are to be packaged in separate bags unassembled.



| SO | BOARD STACKER | LEAD STYLE | THREAD STYLE | 01 | L |
|----|----------------------------------|---|------------------------------|----|--|
| | Specify BOARD STACKER from chart | -01 = Female Thread/Press-In (-0515 thru -0865 only) | -01 = #4-40 Thread | | -L = -02 & -03 Lead Style thread locking compound (Leave blank for -01 Lead Style) |
| | | -02 = Male/Male Thread (-0515 and -1115 thru -2515 only) | -02 = M3 x 0.5 Thread° | | |
| | | -03 = Male/Female Thread (-0815 thru -2515 only) | | | |
| | | -05 = Female/Female Thread (-0515 thru -2515 only) | | | |

| BOARD STACKER | A | BOARD STACK HEIGHT |
|---------------|--------------|--------------------|
| -0515 | (5.15) .203 | 5 mm |
| -0715 | (7.15) .282 | 7 mm |
| -0815 | (8.15) .321 | 8 mm |
| -0865 | (8.65) .341 | 8.5 mm |
| -1115 | (11.15) .439 | 11 mm |
| -1215 | (12.15) .478 | 12 mm |
| -1524 | (15.24) .600 | 15.09 mm |
| -1615 | (16.15) .636 | 16 mm |
| -1890 | (18.90) .744 | 18.75 mm |
| -1915 | (19.15) .754 | 19 mm |
| -2515 | (25.15) .990 | 25 mm |



Mouser Electronics

Authorized Distributor

Click to View Pricing, Inventory, Delivery & Lifecycle Information:

[Samtec:](#)

[SNT-100-YW-G-H](#) [SNT-100-BL-H](#) [SO-2015-02-01-02](#) [SO-0600-01-02-01](#) [SO-2215-05-02-01-L](#)