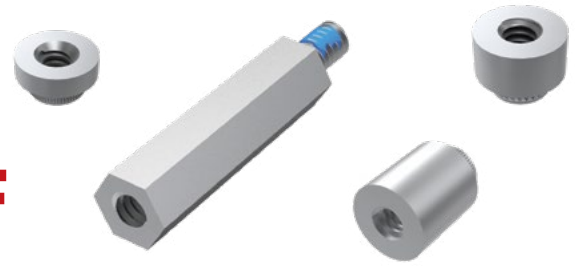


# PRECISION BOARD STACKING STANDOFF

## SO SERIES



### SPECIFICATIONS

**Material:**  
Aluminum  
**Locking Compound:**  
Nylon

**SO**

**BOARD  
STACKER**

**Specify  
BOARD STACKER  
from chart**

**LEAD  
STYLE**

**-01**  
= Female Thread/Press-In  
(-0515 thru -0865 only)

**-02**  
= Male/Male Thread  
(-0515 and  
-1115 thru -2515 only)

**-03**  
= Male/Female Thread  
(-0815 thru -2515 only)

**-05**  
= Female/Female Thread  
(-1524 thru -2515 only)

**THREAD  
STYLE**

**-01**  
= #4-40  
Thread

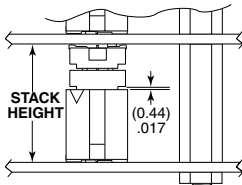
**-02**  
= M3 x 0.5  
Thread

**01**

**L**

**-L**  
= -02 & -03  
Lead Style  
thread locking  
compound  
(Leave blank for  
-01 Lead Style)

### INDUSTRY STANDARD SOLUTIONS



Requires Standoff  
SO-1524-03-01-01-L or  
JSOM-1524-02 for 15.24 mm  
or SO-2215-02-01-01-L  
for 22 mm board spacing.  
Connectors designed to not  
fully seat when mated.  
For more information on the JSOM,  
visit [samtec.com?JSOM](http://samtec.com?JSOM)

INDUSTRY STANDARD	INTERCONNECTS			
	TERMINAL	SOCKET	BANKS	STACK HEIGHT
SUMIT™	ASP-129637-01	ASP-129646-01	1	15.24 mm
PCI/104-Express™	ASP-129637-03	ASP-129646-03	3	15.24 mm
PCI/104-Express™	ASP-129637-13	ASP-129646-22	1	15.24 mm
PCI/104-Express™	ASP-142781-01	ASP-129646-01	1	22 mm
PCI/104-Express™	ASP-142781-02	ASP-129646-02	2	22 mm
PCI/104-Express™	ASP-142781-03	ASP-129646-03	3	22 mm

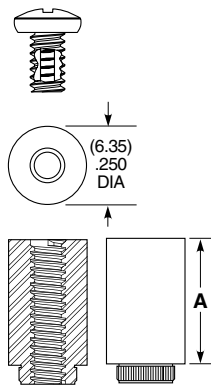
BOARD STACKER	A	BOARD STACK HEIGHT
-0515	(5.15) .203	5 mm
-0715	(7.15) .282	7 mm
-0815	(8.15) .321	8 mm
-0865	(8.65) .341	8.5 mm
-1115	(11.15) .439	11 mm
-1215	(12.15) .478	12 mm
-1524	(15.24) .600	15.09 mm
-1615	(16.15) .636	16 mm
-1890	(18.90) .744	18.75 mm
-1915	(19.15) .754	19 mm
-2515	(25.15) .990	25 mm

### ALSO AVAILABLE MOQ Required

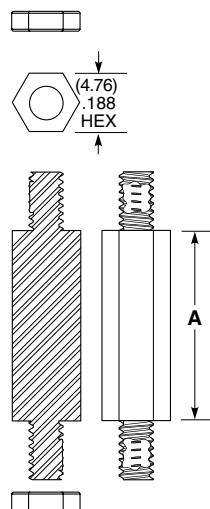
Other heights  
Stainless Steel  
Locking compound removed  
Other materials and threading  
No Hardware

**Notes:**  
Standoffs are designed,  
0.15 mm longer than  
connector stack heights to  
allow for processing variables.

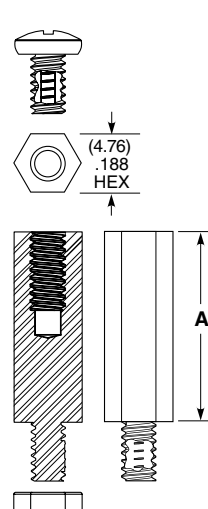
Some sizes, styles and  
options are non-standard,  
non-returnable.



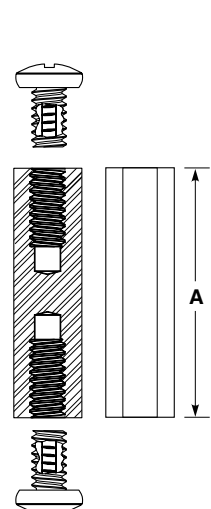
**-01 LEAD STYLE**



**-02 LEAD STYLE**



**-03 LEAD STYLE**



**-05 LEAD STYLE**

Components are to be packaged in separate bags unassembled.

# Mouser Electronics

Authorized Distributor

Click to View Pricing, Inventory, Delivery & Lifecycle Information:

[Samtec:](#)

[SO-0715-01-03-01](#)