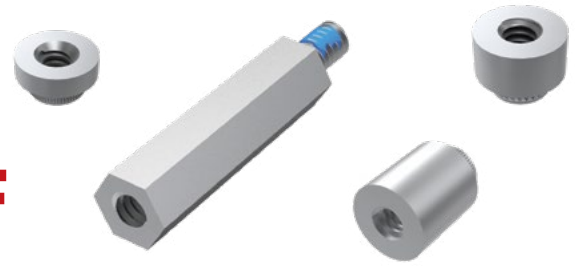


# PRECISION BOARD STACKING STANDOFF

## SO SERIES



### SPECIFICATIONS

**Material:**  
Aluminum  
**Locking Compound:**  
Nylon

**SO**

**BOARD  
STACKER**

**Specify  
BOARD STACKER  
from chart**

**LEAD  
STYLE**

**-01**  
= Female Thread/Press-In  
(-0515 thru -0865 only)

**-02**  
= Male/Male Thread  
(-0515 and  
-1115 thru -2515 only)

**-03**  
= Male/Female Thread  
(-0815 thru -2515 only)

**-05**  
= Female/Female Thread  
(-1524 thru -2515 only)

**THREAD  
STYLE**

**-01**  
= #4-40  
Thread

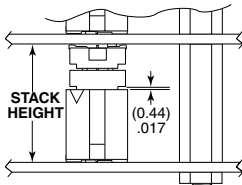
**-02**  
= M3 x 0.5  
Thread

**01**

**L**

**-L**  
= -02 & -03  
Lead Style  
thread locking  
compound  
(Leave blank for  
-01 Lead Style)

### INDUSTRY STANDARD SOLUTIONS



Requires Standoff  
SO-1524-03-01-01-L or  
JSOM-1524-02 for 15.24 mm  
or SO-2215-02-01-01-L  
for 22 mm board spacing.  
Connectors designed to not  
fully seat when mated.  
For more information on the JSOM,  
visit [samtec.com?JSOM](http://samtec.com?JSOM)

| INDUSTRY<br>STANDARD | INTERCONNECTS |               |       |                 |
|----------------------|---------------|---------------|-------|-----------------|
|                      | TERMINAL      | SOCKET        | BANKS | STACK<br>HEIGHT |
| SUMIT™               | ASP-129637-01 | ASP-129646-01 | 1     | 15.24 mm        |
| PCI/104-Express™     | ASP-129637-03 | ASP-129646-03 | 3     | 15.24 mm        |
| PCI/104-Express™     | ASP-129637-13 | ASP-129646-22 | 1     | 15.24 mm        |
| PCI/104-Express™     | ASP-142781-01 | ASP-129646-01 | 1     | 22 mm           |
| PCI/104-Express™     | ASP-142781-02 | ASP-129646-02 | 2     | 22 mm           |
| PCI/104-Express™     | ASP-142781-03 | ASP-129646-03 | 3     | 22 mm           |

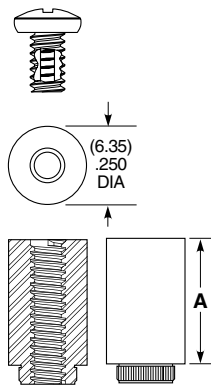
| BOARD<br>STACKER | A            | BOARD STACK<br>HEIGHT |
|------------------|--------------|-----------------------|
| -0515            | (5.15) .203  | 5 mm                  |
| -0715            | (7.15) .282  | 7 mm                  |
| -0815            | (8.15) .321  | 8 mm                  |
| -0865            | (8.65) .341  | 8.5 mm                |
| -1115            | (11.15) .439 | 11 mm                 |
| -1215            | (12.15) .478 | 12 mm                 |
| -1524            | (15.24) .600 | 15.09 mm              |
| -1615            | (16.15) .636 | 16 mm                 |
| -1890            | (18.90) .744 | 18.75 mm              |
| -1915            | (19.15) .754 | 19 mm                 |
| -2515            | (25.15) .990 | 25 mm                 |

### ALSO AVAILABLE MOQ Required

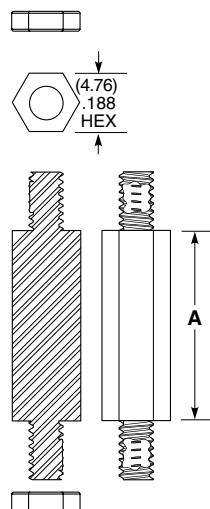
Other heights  
Stainless Steel  
Locking compound removed  
Other materials and threading  
No Hardware

**Notes:**  
Standoffs are designed,  
0.15 mm longer than  
connector stack heights to  
allow for processing variables.

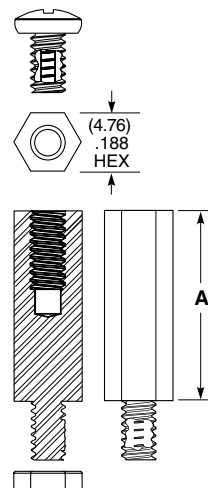
Some sizes, styles and  
options are non-standard,  
non-returnable.



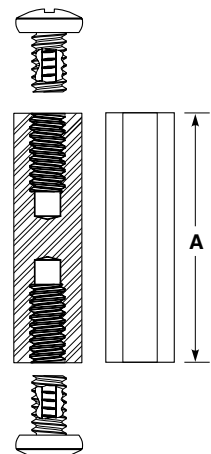
**-01 LEAD STYLE**



**-02 LEAD STYLE**



**-03 LEAD STYLE**



**-05 LEAD STYLE**

Components are to be packaged in separate bags unassembled.

# Mouser Electronics

Authorized Distributor

Click to View Pricing, Inventory, Delivery & Lifecycle Information:

[Samtec:](#)

[SO-2200-03-02-02-L](#)