

SMPM TO 65 GHz

SMPM Cable Assemblies

RF047-A, RF086, RF23C



VSWR

RF047-A: 1.40 max.
RF086: 1.40 max.
RF23C: 1.40 max.

SERIES	END 1 CONNECTOR	END 2 CONNECTOR	OVERALL LENGTH
RF047-A = (1.2 mm) .047" overshield DIA 29 AWG millimeter cable	-M0SP = SMPM Straight Plug, Full Detent		-“XXXX” = Overall Length in millimeters
RF086 = (2.18 mm) .086" overshield DIA 23 AWG millimeter cable	-M0SJ = SMPM Straight Jack		-0100 (0100 mm) 3.94" minimum (RF047-A, RF086)
RF23C = MWC-2350CU-01 millimeter wave cable with copper foil shield	-M0RJ = SMPM Right-angle Jack (RF047-A only)		-0152 (0152 mm) 5.984" minimum (RF23C)
	-M0BJ = SMPM Straight Bulkhead Jack (RF047-A only)		

ALSO AVAILABLE

1.85 mm, 2.40 mm, 2.92 mm = RF086

1.35 mm, 1.85 mm, 2.40 mm,
2.92 mm = RF047-A

2.40 mm, 2.92 mm = RF23C

SMPM Cable Connectors

PRFM0



CONNECTORS FOR INDUSTRY STANDARD CABLES	
PRFM0-J-C-EE-047A-BD	.047 Temp-Flex, low loss flexible, 29 AWG
PRFM0-J-C-EE-085-BD	Harbour SS405, flexible alternative to RG 405
PRFM0-J-C-EE-047A-RD	.047 Temp-Flex, low loss flexible, 29 AWG
PRFM0-J-C-EE-086-SD	.086 Temp-Flex, low loss flexible
PRFM0-J-C-EE-047B-SD	.047 Temp-Flex, low loss flexible, 28 AWG
PRFM0-P-C-HG-047A-SD	.047 Temp-Flex, low loss flexible, 29 AWG
PRFM0-J-C-HG-047A-SD	.047 Temp-Flex, low loss flexible, 29 AWG

P-C = Cable Plug

J-C = Cable Jack

EE = Plating (50 μ" Gold center contact, & outer contact)

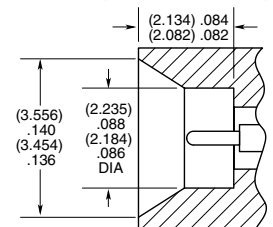
HG = Plating (30 μ" Gold center contact, 10 μ" Gold outer contact)

SD = Straight, Direct Solder

BD = Bulkhead, Direct Solder

RD = Right-angle, Direct Solder

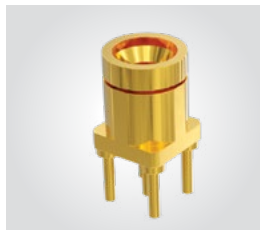
INTERFACE STANDARD (CATCHERS MITT)



SMPM Board Connectors

SMPM-SM, SMPM-TH,
SMPM-RA

Cable Mates:
RF047-A, RF086, RF23C



SMPM	GENDER	TYPE	PLATING	ORIENTATION	TERMINATION	1
	-PF = Full Detent	-P = PCB Mount	-HG = 30 μ" (0.76 μm) Gold center contact, 10 μ" (0.25 μm) Gold outer contact (-ST only)	-ST = Straight	-EM = Drop-in Edge Mount (-ST only)	
	-PS = Smooth Bore		-HF = 30 μ" (0.76 μm) Gold center contact, 3 μ" (0.08 μm) Gold outer contact (-RA only)	-RA = Right-angle (-TH required)	-TH = Through-hole	
	-PC = Catchers Mitt (-ST-TH only)		-EE = 50 μ" (1.27 μm) Gold center contact and outer body (-SM only)		-SM = Surface Mount (-ST only)	
-ST-SM-1		-ST-EM-1		-ST-TH-1	-RA-TH-1	

SMPPM TO 65 GHz

SMPPM Bullet Adaptor PRFIA

Mates With:
SMPPM, GPPB



PRFIA	SMPPM	GENDER	GENDER	ORIENTATION	OPTION
		-J = Jack	-J = Jack	-S = Straight	-1 = (5.33) .210
					-2 = (8.31) .327
					-3 = (12.70) .500
					-4 = (4.22) .166
<p>OPTION 1 OPTION 2 OPTION 3 OPTION 4</p>					

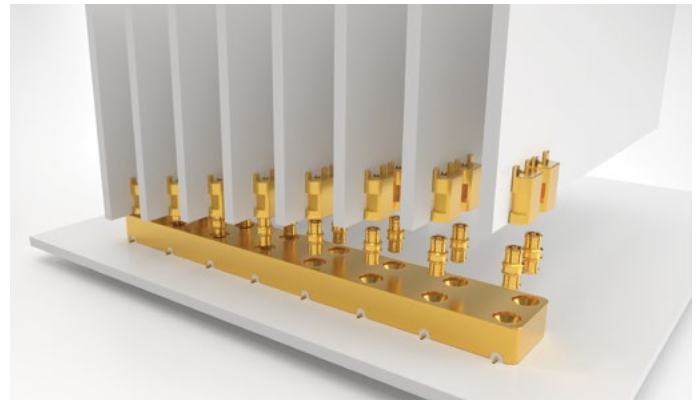
GANGED SMPPM SOLUTIONS

BOARD-TO-BOARD GANGED, MULTI-POSITION SMPPM BLOCKS

Series: GPPB
Mates with: PRFIA

FEATURES

- High-density, space-saving design
- 8.33 mm (.328") pitch (3.56 mm (.140") pitch in development)
- Push-on interface with varying retention forces
- Bullet adaptors enable blind mate applications accommodating axial and radial misalignment
- Board height options: 4.22 mm (.166"), 5.33 mm (.210"), 8.31 mm (.327"), 12.70 mm (.500")

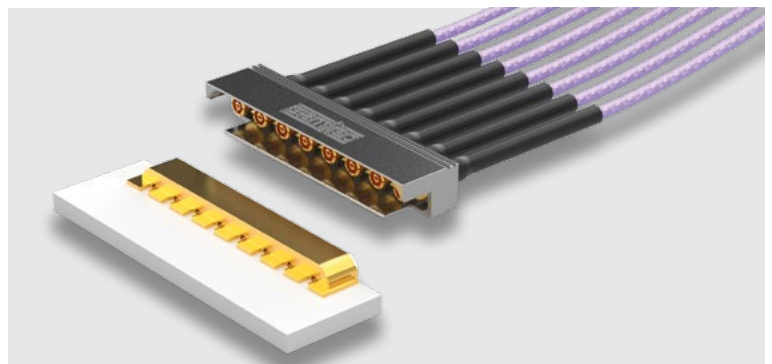


CABLE-TO-BOARD GANGED, MULTI-POSITION SMPPM CABLE ASSEMBLY

Cable Assembly: GC47
Board Mate: GPPC

FEATURES

- High-density, space-saving design
- Pitch: 3.56 mm (.140")
- Push-on interface for quick installation
- .047 low-loss flexible microwave/millimeter wave cable



Applications include: 5G wireless, mmWave, military/defense, telecom, radar, test & measurement, applications that are space limited and require high operating frequency

Mouser Electronics

Authorized Distributor

Click to View Pricing, Inventory, Delivery & Lifecycle Information:

Samtec:

[SMPM-PS-P-HG-ST-EM-1](#) [SMPM-PS-P-HG-ST-TH-1](#) [SMPM-PC-P-HG-ST-TH-1](#) [SMPM-PF-P-HG-ST-EM-1](#) [SMPM-PF-P-HG-ST-TH-1](#) [SMPM-PS-P-HF-RA-TH-1](#) [SMPM-PF-P-HF-RA-TH-1](#)