

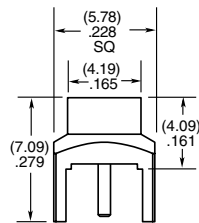
SMP TO 20 GHz

SMP Board Connectors SMP-TH, SMP-EM

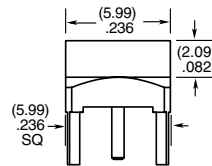
Cable Mates:
RF405, RF255



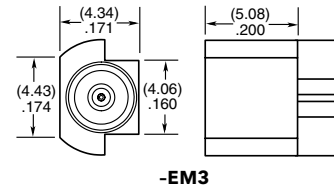
SMP	GENDER	TYPE	PLATING	ORIENTATION	TERMINATION
	-PF = Plug, Full Detent	-P = PCB Mount	-GF = 10 μ " (0.25 μ m) Gold center contact, Gold Flash outer contact (-TH2 only)	-ST = Straight	-TH2 = Through-hole
	-PL = Plug, Limited Detent				-EM3 = Drop-in Edge Mount (Not available with -PC)
	-PS = Plug, Smooth Bore		-HH = 30 μ " (0.76 μ m) Gold center and outer contact (-EM3)		
	-PC = Plug, Catcher's Mitt				



-PF/-PL/-PS-TH2



-PC-TH2

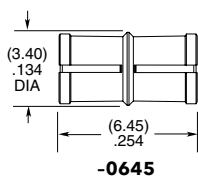


-EM3

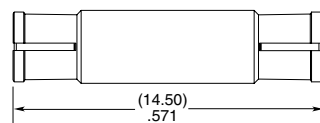
SMP Bullet Adaptor SMP-B



SMP	J	TYPE	PLATING	ORIENTATION	BULLET LENGTH
		-B = Bullet Adaptor	-GF = 10 μ " (0.25 μ m) Gold center contact, Gold Flash outer contact	-ST = Straight	-0645 = 6.45 mm (.254")
					-1450 = 14.50 mm (.571")

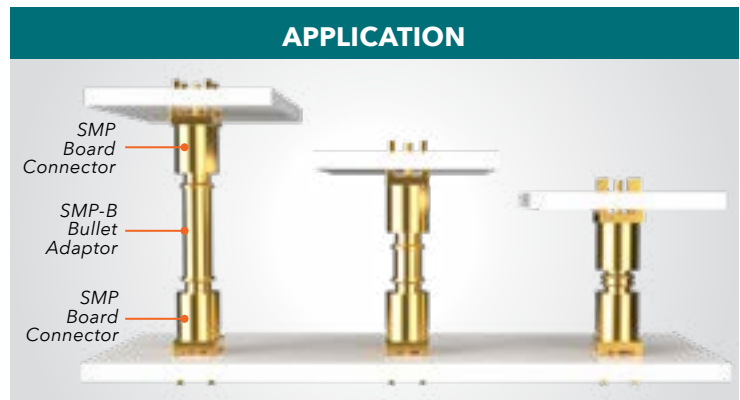


-0645



-1450

APPLICATION



Compensates for axial & radial misalignment

Mouser Electronics

Authorized Distributor

Click to View Pricing, Inventory, Delivery & Lifecycle Information:

[Samtec:](#)

[SMP-PF-P-GF-ST-TH2](#) [SMP-PS-P-GF-ST-TH2](#) [SMP-PC-P-GF-ST-TH2](#) [SMP-PF-P-HG-ST-TH2](#) [SMP-PC-P-HG-ST-TH2](#) [SMP-PL-P-GF-ST-TH2](#)