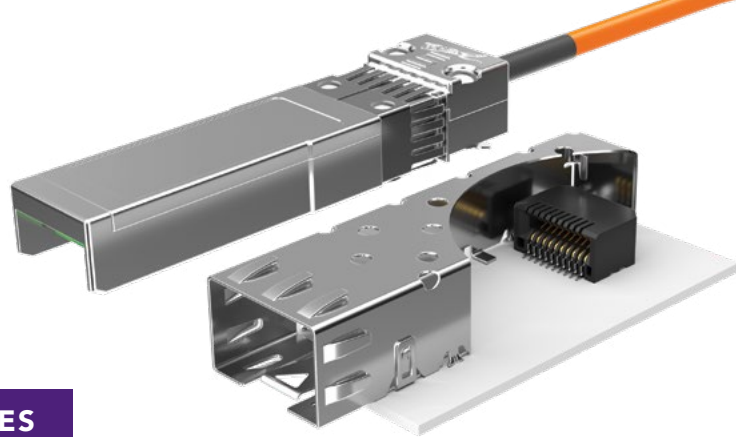


# SFP & SFP+ CABLE & TRANSCEIVER

(0.80 mm) .0315" PITCH • SFPE/MECT SERIES



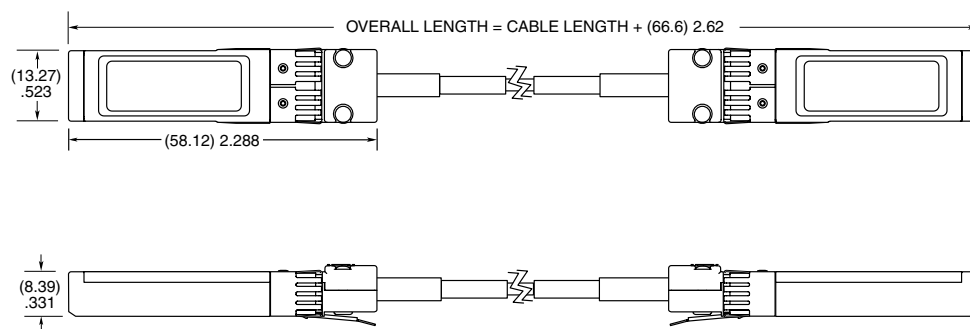
## SFPE

**Mates:**  
MECT, SFPC

### SPECIFICATIONS

**Impedance:**  
100 Ω  
**Signal Routing:**  
Differential

SFPE	-	NO. OF PAIRS	-	CABLE LENGTH	-	EQUALIZATION	-	WIRE GAUGE
		-010 = 2 Pairs		-XXXX = Length in millimeters -1000, -2000, -3000 (Standard lengths)		-NE = Non Equalized		-32 = 32 AWG



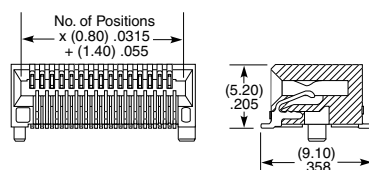
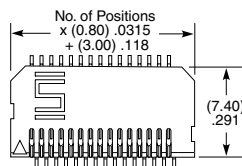
## MECT

**Mates:**  
SFP, SFP+, XFP or  
XENPAK transceivers

### SPECIFICATIONS

**Insulator Material:**  
Black LCP  
**Contact Material:**  
Phosphor Bronze  
**Plating:**  
Sn or Au over  
100 μ" (2.54 μm) Ni  
**Operating Temp Range:**  
-55 °C to +125 °C  
**Current Rating:**  
2 A per pin  
(6 pins powered)  
**Voltage Rating:**  
265 VAC

MECT	-	1	POSITIONS PER ROW	-	CARD THICKNESS	-	PLATING OPTION	-	D	-	RA1	-	OTHER OPTION
			10, 15, 35		-01 = (1 mm) .039" thick board		-M = 15 μ" (0.38 μm) Gold on contact, Matte Tin on tail						-TR = Tape & Reel  -FR = Full Reel Tape & Reel (must order max. quantity per reel; contact Samtec for quantity breaks)



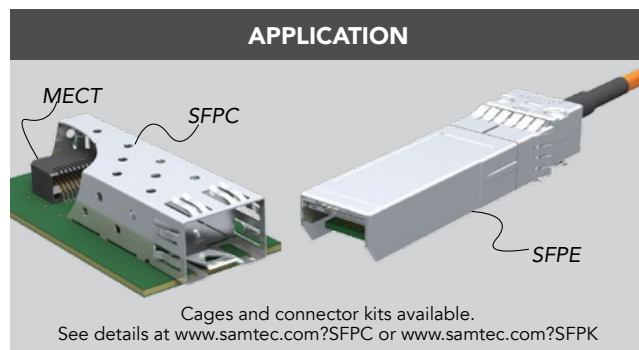
15 POSITIONS SHOWN

### PROCESSING

**Lead-Free Solderable:**  
Yes  
**SMT Lead Coplanarity:**  
(0.10 mm) .004" max

**Note:**  
Some sizes, styles and  
options are non-standard,  
non-returnable.

### APPLICATION



# Mouser Electronics

Authorized Distributor

Click to View Pricing, Inventory, Delivery & Lifecycle Information:

Samtec:

[SFPE-010-1000-NE-32](#) [SFPE-010-0750-NE-32](#) [SFPE-010-3000-NE-32](#)