


FIG 1
(QFS-052-01-XX-D-RA SHOWN)

POSITION	"K"	"L"	"M"	"N"
-026	1.330 [33.78]	1.050 [26.67]	.625 [15.88]	1.080 [27.43]
-052	2.170 [55.12]	1.890 [48.01]	1.465 [37.21]	1.920 [48.77]
-078	3.010 [76.45]	2.370 [69.34]	2.305 [58.55]	2.760 [70.10]
-104	3.850 [97.79]	3.530 [90.68]	3.145 [79.88]	3.600 [91.44]

NOTES:

1.  REPRESENTS A CRITICAL DIMENSION.
2. MAXIMUM BURR ALLOWANCE: .0010[0.02].
3. MINIMUM PUSHOUT FORCE: SIGNAL: .5 LB [2.22 N],
SHIELD/GROUND, POWER PIN AND COUNTERWEIGHT: 1 LB [4.45 N].
4. PARTS TO BE PACKAGED IN TRAYS AS STANDARD.
5. PLUS .007" ALLOWED ON 4 BANK.
6. DOES NOT APPLY TO 1 BANK.
7. USE -Z- DATUM ZONE FOR ONLY MEASUREMENTS.

UNLESS OTHERWISE SPECIFIED,
DIMENSIONS ARE IN INCHES.

TOLERANCES ARE:

DECIMALS

XX: $\pm .01$ [.3]

.XXX: ± 0.005 [.13]
.XXX: ± 0.0020 [.051]

PROPRIETARY NOTE

PROPRIETARY NOTE
THIS DOCUMENT CONTAINS INFORMATION
CONFIDENTIAL AND PROPRIETARY TO
SAMTEC, INC. AND SHALL NOT BE REPRODUCED
OR TRANSFERRED TO OTHER DOCUMENTS OR
DISCLOSED TO OTHERS OR USED FOR ANY
PURPOSE OTHER THAN THAT WHICH IT WAS
OBTAINED WITHOUT THE EXPRESSED WRITTEN
CONSENT OF SAMTEC, INC.

samtec

520 PARK EAST BLVD, NEW ALBANY, IN 47150
PHONE: 812-944-6733 FAX: 812-948-5047
e-Mail info@SAMTEC.com code 55322

MATERIAL:

DO NOT SCALE DRAWING

SHEET SCALE: 2:1

INSULATOR: LCP, COLOR BLACK
CONTACT, POWER PIN & GROUND PLANE: PHOS BRONZE
COUNTERWEIGHT: BRASS

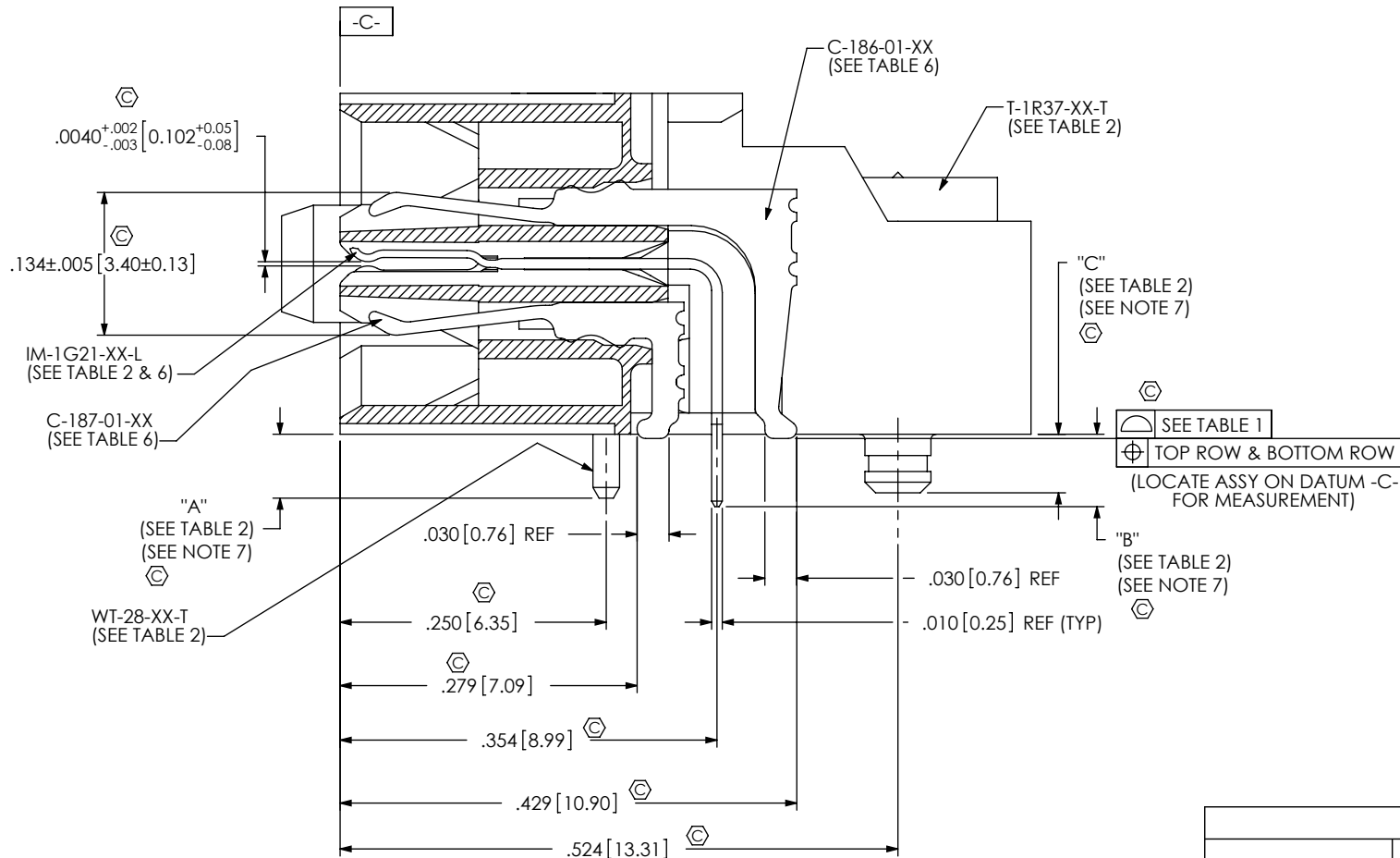
DESCRIPTION:	
--------------	--

.635mm DUAL ROW RIGHT ANGLE SOCKET ASSEMBLY

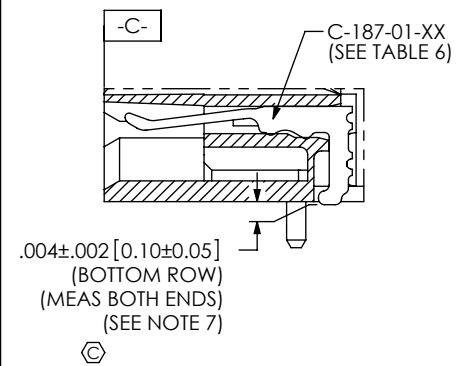
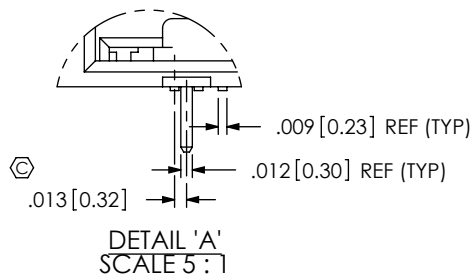
DWG. NO.

QFS-XXX-XX-XX-D-RA-XXX-XX

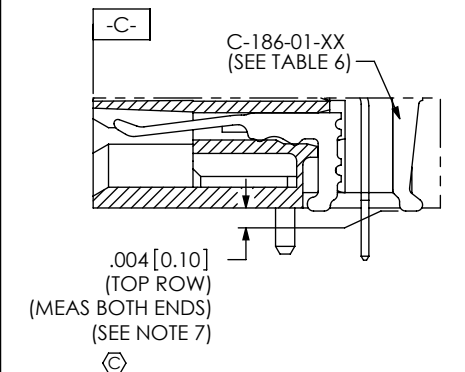
BY: CLAY W	8/25/2006	SHEET 1 OF 6
------------	-----------	--------------



SECTION "B"-"B"
SCALE 6:1



BOTTOM ROW - TAIL DETAIL
(LOCATE ASSEMBLY ON DATUM -C- FOR MEASUREMENT)



TOP ROW - TAIL DETAIL
(LOCATE ASSEMBLY ON DATUM -C- FOR MEASUREMENT)

TABLE 1

No OF POSITIONS	COPLANARITY	STRAIGHTNESS ROW 1	STRAIGHTNESS ROW 2
-026 THRU -052	.004[.10]	.004[.10]	.004[.10]
-078 THRU -104	.006[.15]	.006[.15]	.006[.15]

TABLE 2

LEAD STYLE	"A"	"B"	"C"	WT-28-XX-T	IM-1G21-XX-L	T-1R37-XX-T
-01	.060[1.52]	.068[1.73]	.055[1.40]	WT-28-01-T	IM-1G21-01-L	T-1R37-01-T
-02	.091[2.31]	.099[2.51]	.086[2.18]	WT-28-02-T	IM-1G21-02-L	T-1R37-02-T

PROPRIETARY NOTE
 THIS DOCUMENT CONTAINS INFORMATION
 CONFIDENTIAL AND PROPRIETARY TO
 SAMTEC, INC. AND SHALL NOT BE REPRODUCED
 OR TRANSFERRED TO OTHER DOCUMENTS OR
 DISCLOSED TO OTHERS OR USED FOR ANY
 PURPOSE OTHER THAN THAT WHICH IT WAS
 OBTAINED WITHOUT THE EXPRESSED WRITTEN
 CONSENT OF SAMTEC, INC.

DO NOT SCALE DRAWING

SHEET SCALE: 6:1

samtec
 520 PARK EAST BLVD, NEW ALBANY, IN 47150
 PHONE: 812-944-6733 FAX: 812-948-5047
 e-Mail: info@SAMTEC.com code 55322

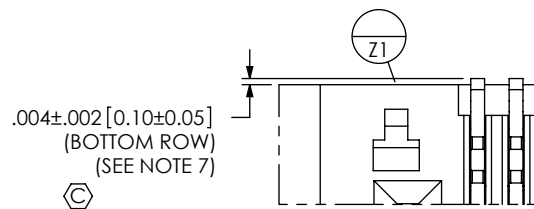
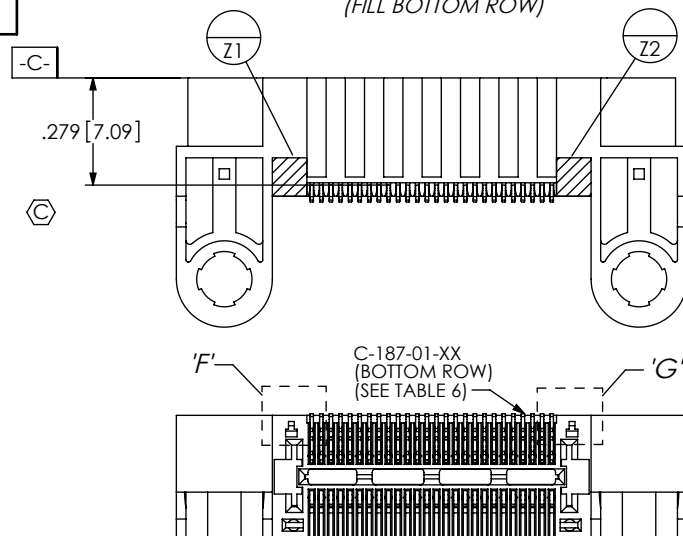
DESCRIPTION:
 .635mm DUAL ROW RIGHT ANGLE SOCKET ASSEMBLY

DWG. NO.
QFS-XXX-XX-XX-D-RA-XXX-XX

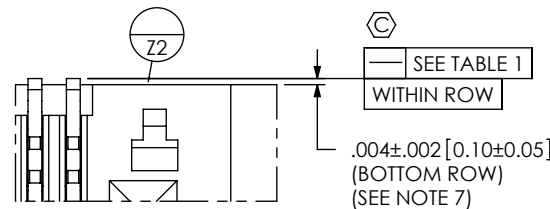
BY: CLAY W 8/25/2006 SHEET 2 OF 6

REVISION X

INSPECTION VIEW 1
(FILL BOTTOM ROW)

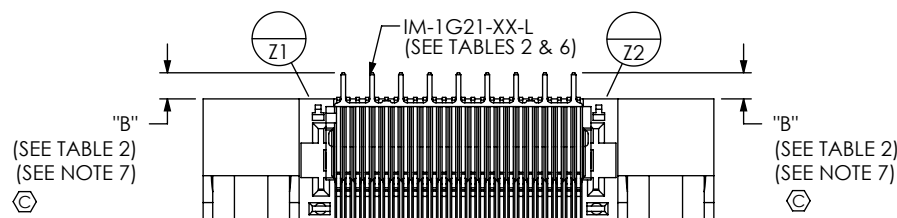
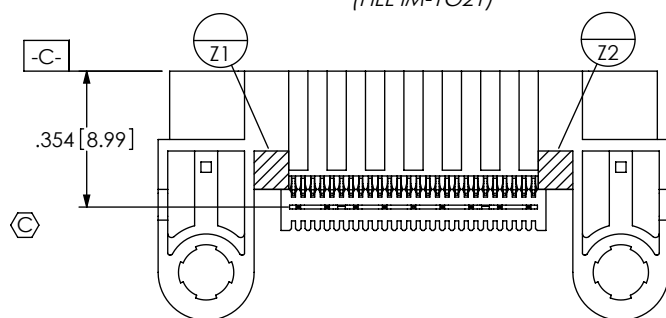


DETAIL 'F'
SCALE 8 : 1



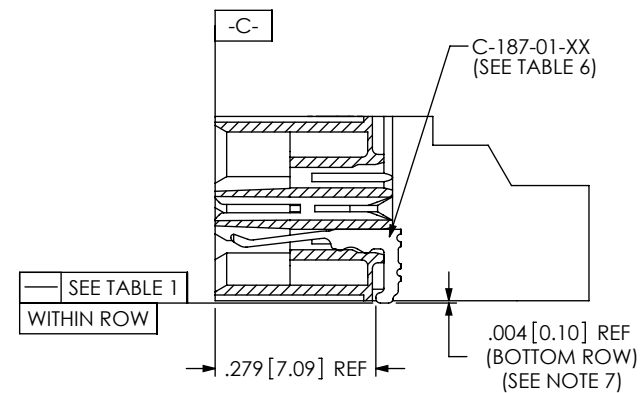
DETAIL 'G'
SCALE 8 : 1

INSPECTION VIEW 2
(FILL IM-TG21)

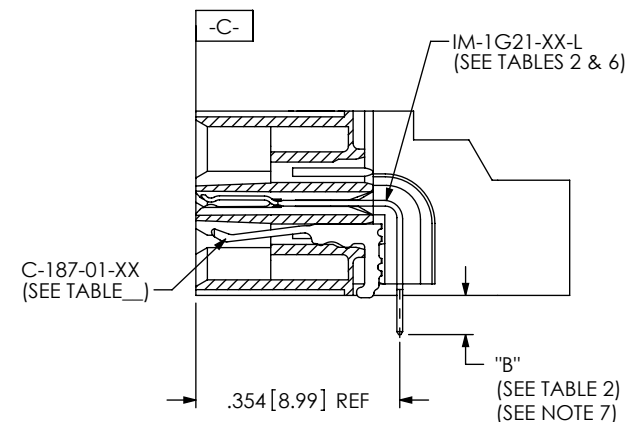


(SEE TABLE 2)
(SEE NOTE 7)

(SEE TABLE 2)
(SEE NOTE 7)



IN-PROCESS 1
(FILL BOTTOM ROW)
(SEE INSPECTION VIEW 1 FOR ORIENTATION AND CPC'S)



IN-PROCESS 2
(FILL IM-TG21)
(SEE INSPECTION VIEW 2 FOR ORIENTATION AND CPC'S)

PROPRIETARY NOTE

THIS DOCUMENT CONTAINS INFORMATION
CONFIDENTIAL AND PROPRIETARY TO
SAMTEC, INC. AND SHALL NOT BE REPRODUCED
OR TRANSFERRED TO OTHER DOCUMENTS OR
DISCLOSED TO OTHERS OR USED FOR ANY
PURPOSE OTHER THAN THAT WHICH IT WAS
OBTAINED WITHOUT THE EXPRESSED WRITTEN
CONSENT OF SAMTEC, INC.

DO NOT SCALE DRAWING

SHEET SCALE: 2:1

samtec

520 PARK EAST BLVD, NEW ALBANY, IN 47150
PHONE: 812-944-6733 FAX: 812-948-5047
e-Mail info@SAMTEC.com code 55322

DESCRIPTION:
.635mm DUAL ROW RIGHT ANGLE SOCKET ASSEMBLY

DWG. NO.
QFS-XXX-XX-XX-D-RA-XXX-XX

BY: CLAY W 8/25/2006 SHEET 3 OF 6

REVISION X

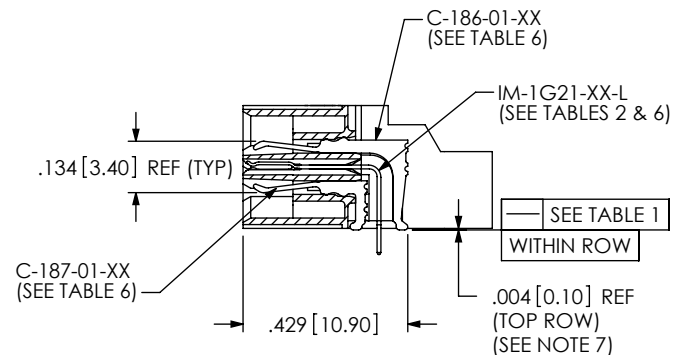
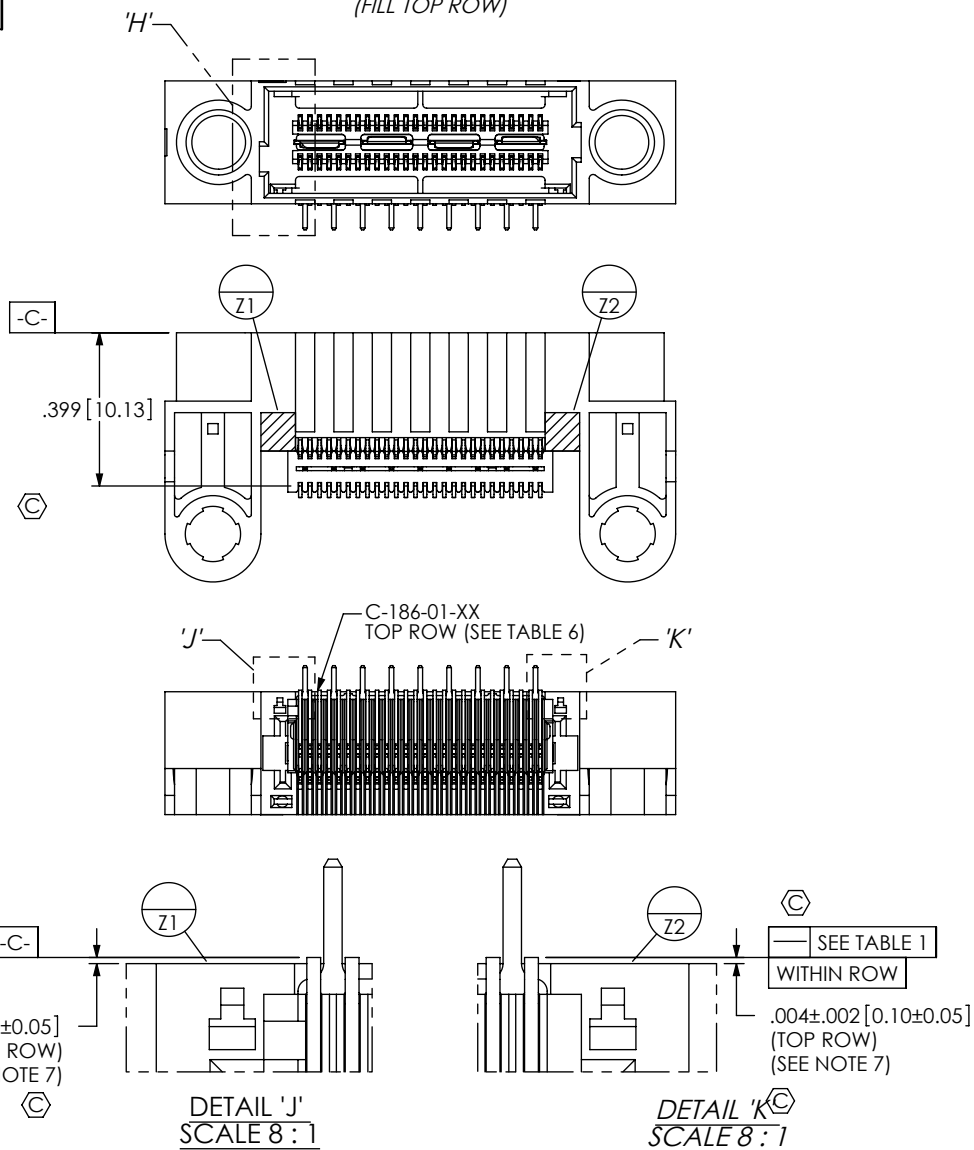
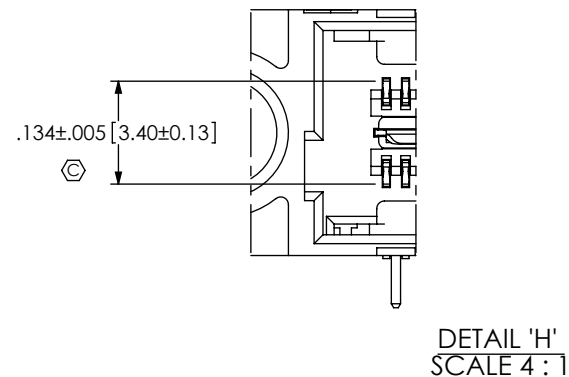
INSPECTION VIEW 3
(FILL TOP ROW)**IN-PROCESS 3**
(FILL TOP ROW)
(SEE INSPECTION VIEW 3 FOR ORIENTATION AND CPC'S)

TABLE 6: PLATING SPECIFICATIONS

	CONTACT	CONTACT	GROUND PLANE	PCX CONTACTS
-SL	C-186-01-SL: 10μ" GOLD CONTACT, MATTE TIN TAIL	C-187-01-SL: 10μ" GOLD CONTACT, MATTE TIN TAIL	IM-1G21-XX-L: 10μ" GOLD CONTACT, MATTE TIN TAIL	C-79-XX-L: 10μ" GOLD CONTACT, MATTE TIN TAIL
-S	C-186-01-S: 30μ" GOLD CONTACT, MATTE TIN TAIL	C-187-01-S: 30μ" GOLD CONTACT, MATTE TIN TAIL	IM-1G21-XX-L: 10μ" GOLD CONTACT, MATTE TIN TAIL	C-79-XX-S: 30μ" GOLD CONTACT, MATTE TIN TAIL
-L	C-186-01-L: 10μ" GOLD CONTACT, 3μ" GOLD TAIL	C-187-01-L: 10μ" GOLD CONTACT, 3μ" GOLD TAIL	IM-1G21-XX-L: 10μ" GOLD CONTACT, MATTE TIN TAIL	C-79-XX-L: 10μ" GOLD CONTACT, MATTE TIN TAIL
-H	C-186-01-H: 30μ" GOLD CONTACT, 3μ" GOLD TAIL	C-187-01-H: 30μ" GOLD CONTACT, 3μ" GOLD TAIL	IM-1G21-XX-L: 10μ" GOLD CONTACT, MATTE TIN TAIL	C-79-XX-H: 50μ" GOLD CONTACT, 3μ" LIGHT GOLD TAIL

PROPRIETARY NOTE

THIS DOCUMENT CONTAINS INFORMATION CONFIDENTIAL AND PROPRIETARY TO SAMTEC, INC. AND SHALL NOT BE REPRODUCED OR TRANSFERRED TO OTHER DOCUMENTS OR DISCLOSED TO OTHERS OR USED FOR ANY PURPOSE OTHER THAN THAT WHICH IT WAS OBTAINED WITHOUT THE EXPRESSED WRITTEN CONSENT OF SAMTEC, INC.

DO NOT SCALE DRAWING

SHEET SCALE: 1:1

520 PARK EAST BLVD, NEW ALBANY, IN 47150
PHONE: 812-944-6733 FAX: 812-948-5047
e-Mail info@SAMTEC.com code 55322

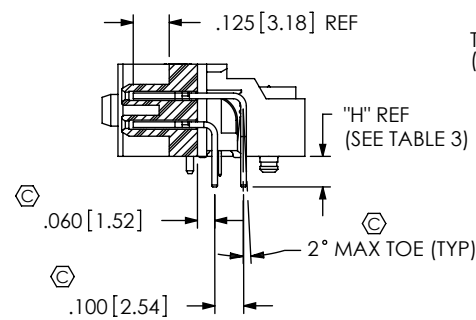
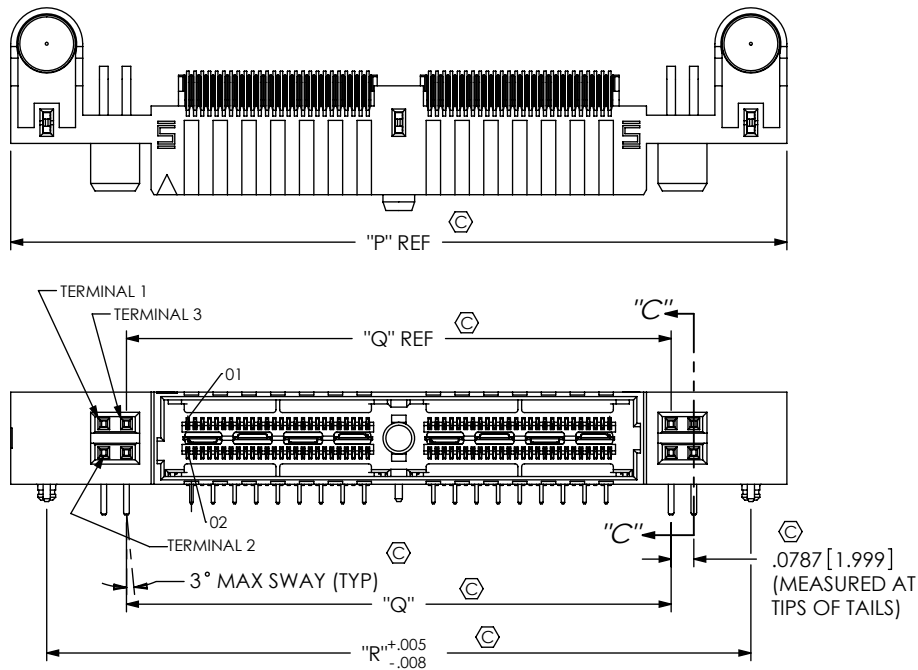
DESCRIPTION:
.635mm DUAL ROW RIGHT ANGLE SOCKET ASSEMBLY

DWG. NO.

QFS-XXX-XX-XX-D-RA-XXX-XX

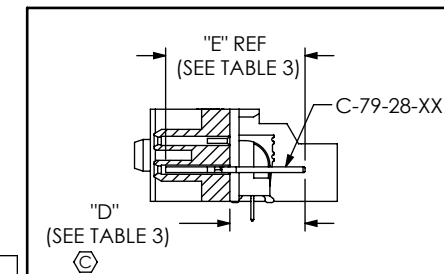
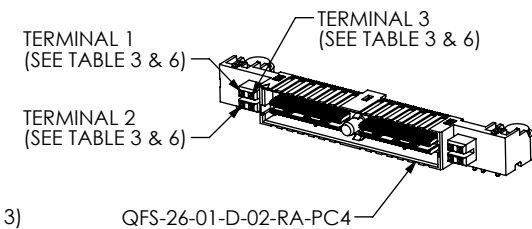
BY: CLAY W 8/25/2006 SHEET 4 OF 6

FIG 2
(QFS-052-01-XX-D-RA-PC4 SHOWN)
(SAME AS FIG 1, DIFFERENT AS SHOWN)

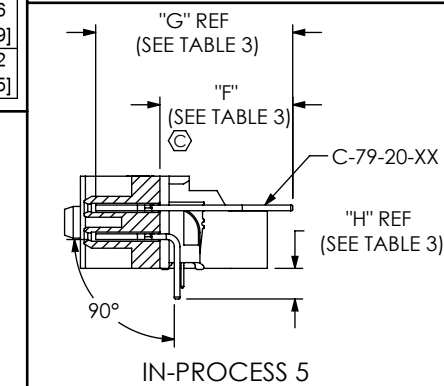


SECTION "C"-"C"
SCALE 1.5:1

TABLE 3							
LEAD STYLE	TERMINAL 1	TERMINAL 2	"D"	"E"	"F"	"G"	"H"
-01	C-79-28-XX	C-79-29-XX	.261 [6.63]	.484 [12.29]	.461 [11.71]	.684 [17.37]	.106 [2.69]
-02	C-79-20-XX	C-79-20A-XX	.287 [7.29]	.510 [12.95]	.487 [12.37]	.710 [18.03]	.132 [3.35]



IN-PROCESS 4



IN-PROCESS 5

FIG 3
(QFS-052-01-XX-D-RA-PC8 SHOWN)
(SAME AS FIG 2, DIFFERENT AS SHOWN)

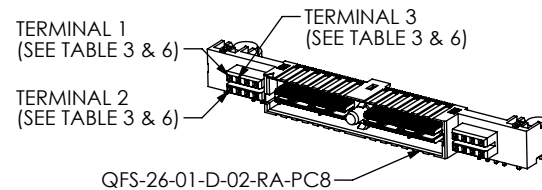
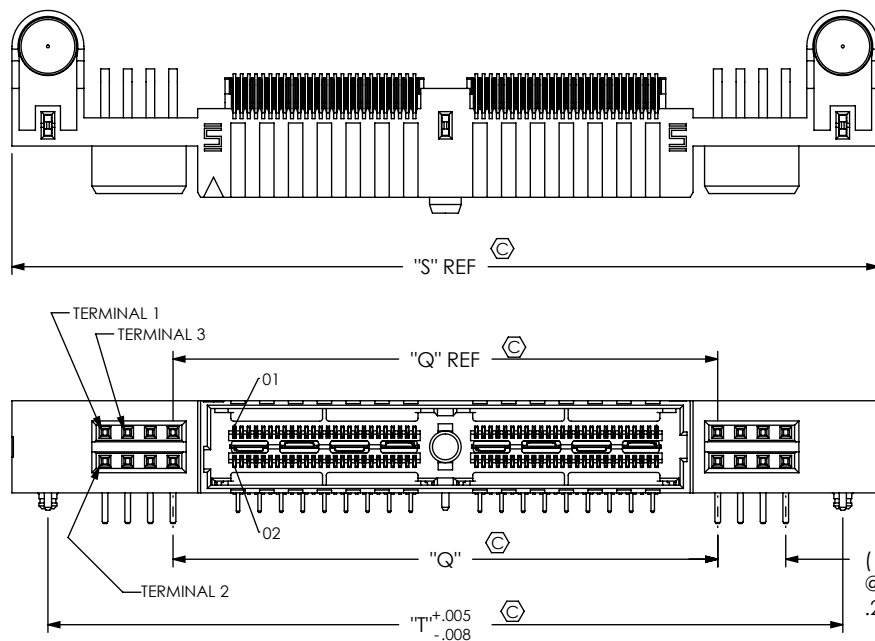


TABLE 7					
POSITION	"P"	"Q"	"R"	"S"	"T"
-026	1.855 [47.12]	1.051 [26.70]	1.605 [40.77]	2.170 [55.12]	1.920 [48.77]
-052	2.695 [68.45]	1.891 [48.03]	2.445 [62.10]	3.010 [76.45]	2.760 [70.10]
-078	3.535 [89.79]	2.731 [69.37]	3.285 [83.44]	3.850 [97.79]	3.600 [91.44]
-104	4.375 [111.13]	3.571 [90.70]	4.125 [104.78]	4.690 [119.13]	4.440 [112.78]

CPC FREQUENCY THIS SHEET	
A	C28
B	C22, C23, C26, C27, C34, C35, C36
C	
D	

PROPRIETARY NOTE
THIS DOCUMENT CONTAINS INFORMATION
CONFIDENTIAL AND PROPRIETARY TO
SAMTEC, INC. AND SHALL NOT BE REPRODUCED
OR TRANSFERRED TO OTHER DOCUMENTS OR
DISCLOSED TO OTHERS OR USED FOR ANY
PURPOSE OTHER THAN THAT WHICH IT WAS
OBTAINED WITHOUT THE EXPRESSED WRITTEN
CONSENT OF SAMTEC, INC.

DO NOT SCALE DRAWING

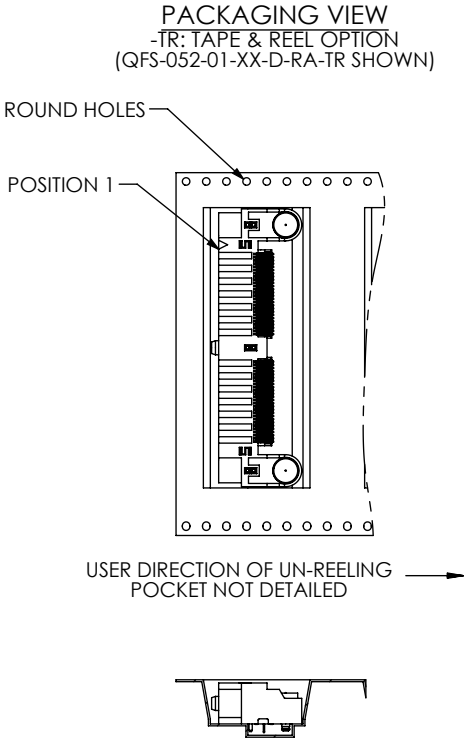
SHEET SCALE: 1.5:1

samtec

520 PARK EAST BLVD. NEW ALBANY, IN 47150
PHONE: 812-944-6733 FAX: 812-948-5047
e-Mail: info@SAMTEC.com code 55322

DESCRIPTION:
.635mm DUAL ROW RIGHT ANGLE SOCKET ASSEMBLY

DWG. NO.
QFS-XXX-XX-XX-D-RA-XXX-XX
BY: CLAY W 8/25/2006 SHEET 5 OF 6



-K: KAPTON PAD
QFS-026-01-XX-D-RA-K SHOWN

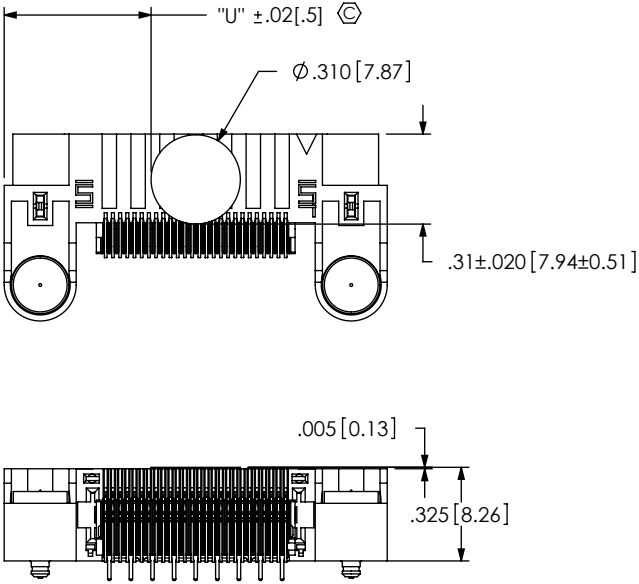


TABLE 4				
	STANDARD & -MG	-PC4	-PC8	
POS.	"U"			
-026	0.511 [12.98]	0.774 [19.66]	0.931 [23.65]	
-052	0.931 [23.65]	1.194 [30.33]	1.351 [34.32]	
-078	1.351 [34.32]	1.614 [41.00]	1.771 [44.98]	
-104	1.771 [44.98]	2.033 [51.65]	2.091 [53.11]	

PROPRIETARY NOTE
THIS DOCUMENT CONTAINS INFORMATION
CONFIDENTIAL AND PROPRIETARY TO
SAMTEC, INC. AND SHALL NOT BE REPRODUCED
OR TRANSFERRED TO OTHER DOCUMENTS OR
DISCLOSED TO OTHERS OR USED FOR ANY
PURPOSE OTHER THAN THAT WHICH IT WAS
OBTAINED WITHOUT THE EXPRESSED WRITTEN
CONSENT OF SAMTEC, INC.

DO NOT SCALE DRAWING

SHEET SCALE: 6:1

520 PARK EAST BLVD, NEW ALBANY, IN 47150
PHONE: 812-944-6733 FAX: 812-948-5047
e-Mail info@SAMTEC.com code 55322

DESCRIPTION:
.635mm DUAL ROW RIGHT ANGLE SOCKET ASSEMBLY

DWG. NO.
QFS-XXX-XX-XX-D-RA-XXX-XX

BY: CLAY W 8/25/2006 SHEET 6 OF 6

Mouser Electronics

Authorized Distributor

Click to View Pricing, Inventory, Delivery & Lifecycle Information:

[Samtec:](#)

[QFS-052-02-S-D-RA-PC8](#)