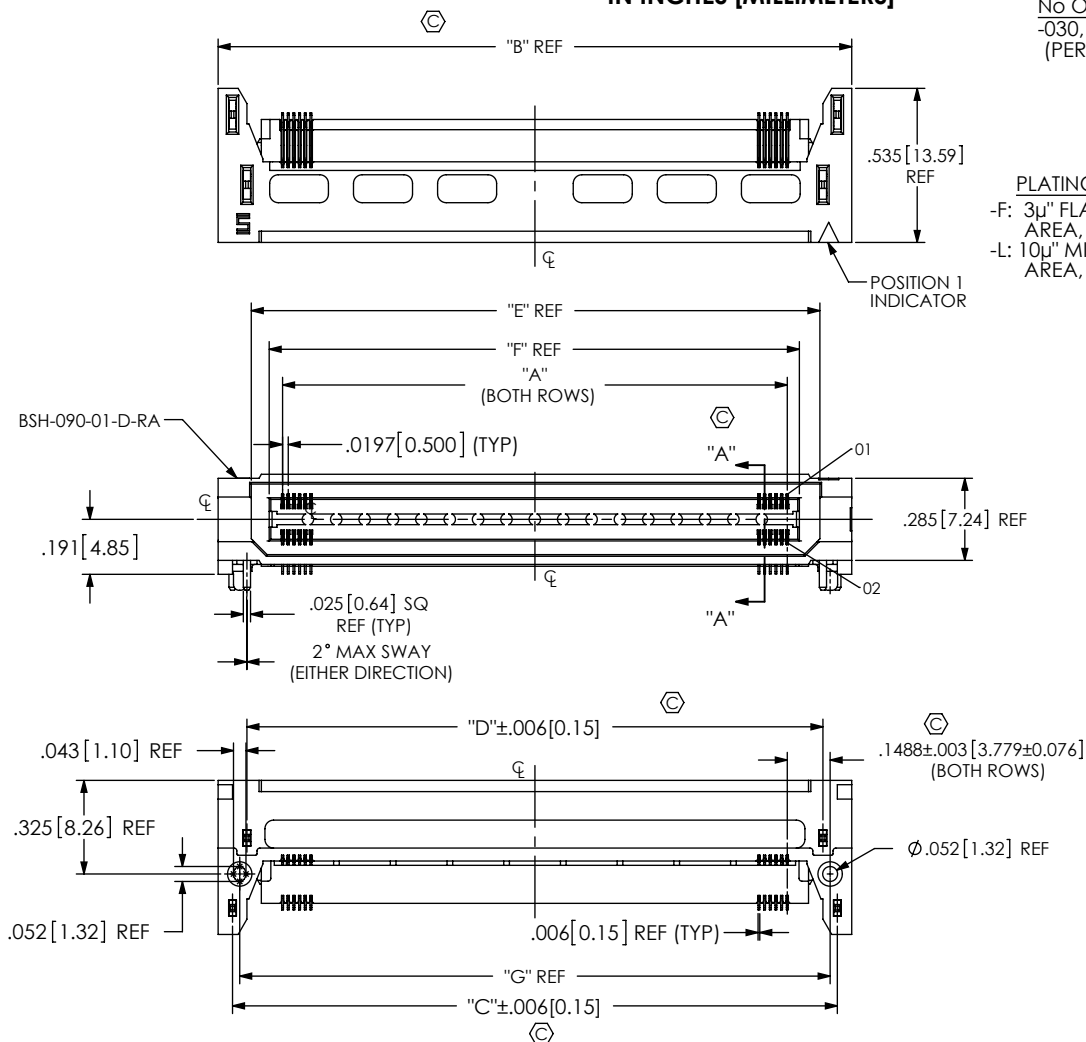


DO NOT  
SCALE FROM  
THIS PRINTDESIGNED & DIMENSIONED  
IN INCHES [MILLIMETERS]FIG. 1  
BSH-090-01-X-D-RA-WT SHOWN  
(SOME CENTER FEATURES REMOVED FOR CLARITY)

BSH-XXX-XX-X-D-RA-WT-XXX

No OF POSITIONS  
-030, -060, -090  
(PER ROW)LEAD STYLE  
-01: .062 BOARD

## PLATING SPECIFICATION

-F: 3μ" FLASH GOLD IN CONTACT  
AREA, MATTE TIN ON TAIL  
-L: 10μ" MIN. FLASH GOLD IN CONTACT  
AREA, MATTE TIN ON TAIL

## OPTION

-GP: GUIDE POST  
(SEE FIG 3, SHT 3)  
\* -LS1: LOCKING SCREW  
(SEE FIG 2, SHT 3)  
(FOR MATING WITH  
BTH-...-RA-...LS1)WT: WELD TAB  
(USE WT-16-XX-T)

RA: RIGHT ANGLE

ROW SPECIFICATION  
-D: DOUBLE

(\* = NOT TOOLED)

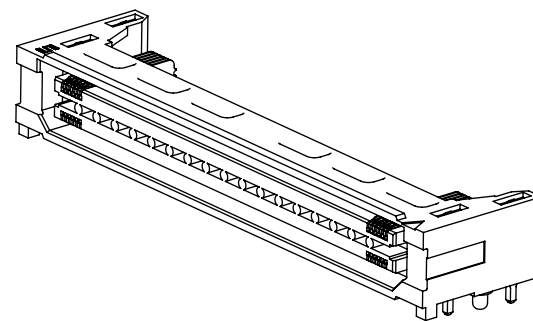
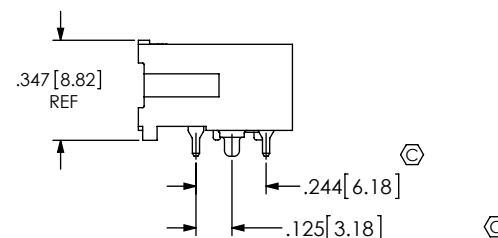


TABLE 1

No OF POS.	"A"	"B"	"C"	"D"	"E"	"F"	"G"
-030	.5710 [14.504]	1.019 [25.87]	.919 [23.33]	.819 [20.79]	.793 [20.13]	.660 [16.75]	.869 [22.06]
-060	1.1617 [29.507]	1.609 [40.88]	1.509 [38.34]	1.409 [35.80]	1.383 [35.14]	1.250 [31.76]	1.459 [37.07]
-090	1.7524 [44.511]	2.200 [55.88]	2.100 [53.34]	2.000 [50.80]	1.974 [50.14]	1.841 [46.76]	2.050 [52.07]

## NOTES:

1. Ⓢ REPRESENTS A CRITICAL DIMENSION.
2. BURR ALLOWANCE: .0010 MAXIMUM.
3. MINIMUM PUSHOUT FORCE: 6 OZ.
4. IF NEEDED, -L PLATING CAN BE SUBSTITUTED FOR -F PLATING.
5. ASSEMBLIES TO BE PACKAGED IN TRAYS.
6. NOT RECOMMENDED FOR INVERTED REFLOW SOLDER.
7. MEASURE C14 FROM SIDE VIEW, ORIENTED AS IN-PROCESS 3 ON PAGE 2.  
MEASURE BOTH ENDS.

UNLESS OTHERWISE SPECIFIED,  
DIMENSIONS ARE IN  
INCHES [MILLIMETERS]  
TOLERANCES ARE:  
DECIMALS ANGLES  
.XX: ±.01 [0.3] 2°  
.XXX: ±.005 [0.13]  
.XXXX: ±.0020 [0.051]

## PROPRIETARY NOTE

THIS DOCUMENT CONTAINS INFORMATION  
CONFIDENTIAL AND PROPRIETARY TO  
SAMTEC, INC. AND SHALL NOT BE REPRODUCED  
OR TRANSFERRED TO OTHER DOCUMENTS OR  
DISCLOSED TO OTHERS OR USED FOR ANY  
PURPOSE OTHER THAN THAT WHICH IT WAS  
OBTAINED WITHOUT THE EXPRESSED WRITTEN  
CONSENT OF SAMTEC, INC.

520 PARK EAST BLVD, NEW ALBANY, IN 47150  
PHONE: 812-944-6733 FAX: 812-948-5047  
e-Mail: info@SAMTEC.com code 55322

MATERIAL: DO NOT SCALE DRAWING SHEET SCALE: 3:2

INSULATOR, SPACER BODY: LCP, COLOR: BLACK  
CONTACT & WELD TAB: PHOS BRONZE

DESCRIPTION:

.50mm DOUBLE ROW RIGHT ANGLE SOCKET STRIP

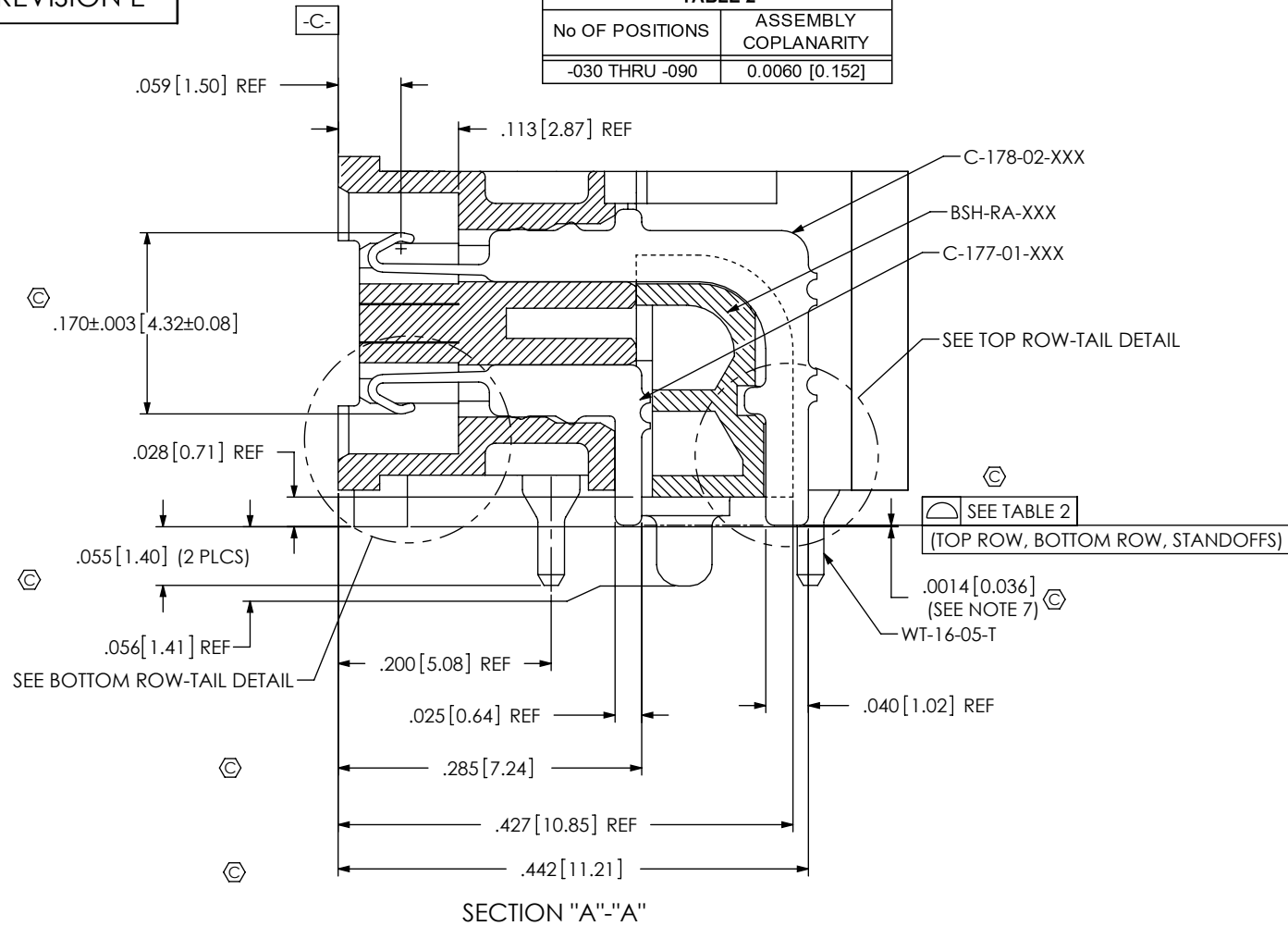
DWG. NO.

BSH-XXX-XX-X-D-RA-WT-XXX

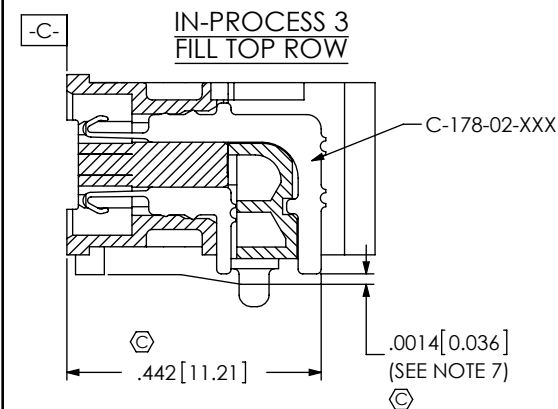
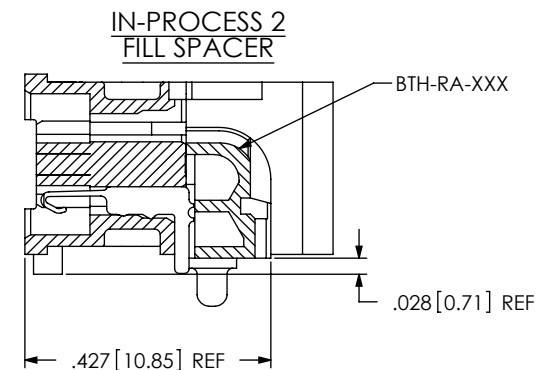
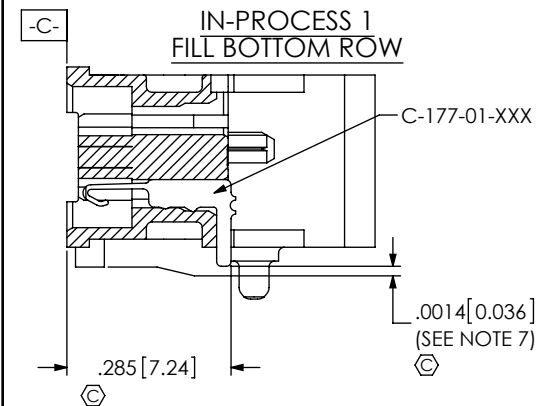
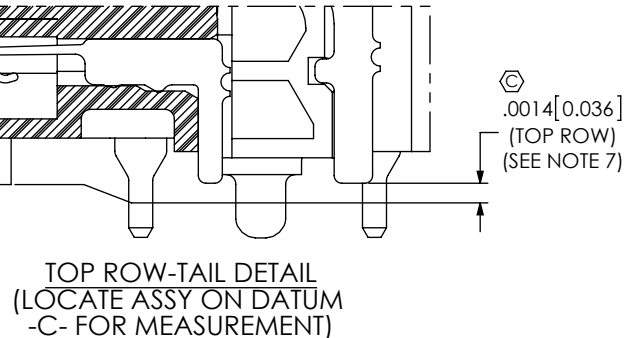
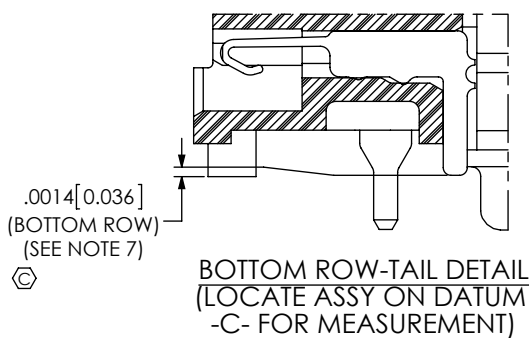
BY: KNOWLDEN 7/21/2011 SHEET 1 OF 3

REVISION E

TABLE 2	
No OF POSITIONS	ASSEMBLY COPLANARITY
-030 THRU -090	0.0060 [0.152]



SECTION "A"-"A"



PROPRIETARY NOTE

THIS DOCUMENT CONTAINS INFORMATION CONFIDENTIAL AND PROPRIETARY TO SAMTEC, INC. AND SHALL NOT BE REPRODUCED OR TRANSFERRED TO OTHER DOCUMENTS OR DISCLOSED TO OTHERS OR USED FOR ANY PURPOSE OTHER THAN THAT WHICH IT WAS OBTAINED WITHOUT THE EXPRESSED WRITTEN CONSENT OF SAMTEC, INC.

DO NOT SCALE DRAWING

SHEET SCALE: 6:1

**samtec**

520 PARK EAST BLVD, NEW ALBANY, IN 47150  
PHONE: 812-944-6733 FAX: 812-948-5047  
e-Mail: info@SAMTEC.com code 55322

DESCRIPTION:

.50mm DOUBLE ROW RIGHT ANGLE SOCKET STRIP

DWG. NO.

BSH-XXX-XX-X-D-RA-WT-XXX

BY: KNOWLDEN 7/21/2011 SHEET 2 OF 3

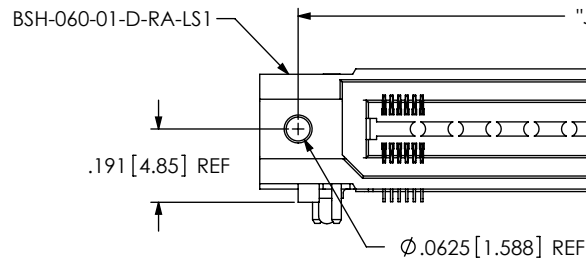
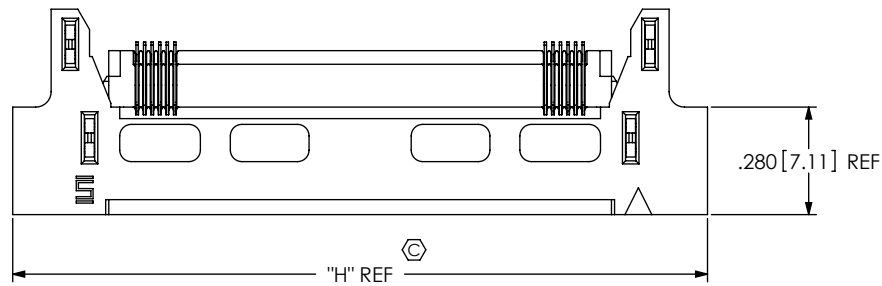


FIG 2  
BSH-060-01-X-D-RA-LS1 SHOWN  
(SAME AS FIG 1, EXCEPT AS SHOWN)  
(NOT TOOLED)

TABLE 5		
NO OF POS	"H"	"J"
-30	1.219 [30.95]	1.019 [25.87]
-60	1.809 [45.96]	1.609 [40.88]
-90	2.400 [60.96]	2.200 [55.88]

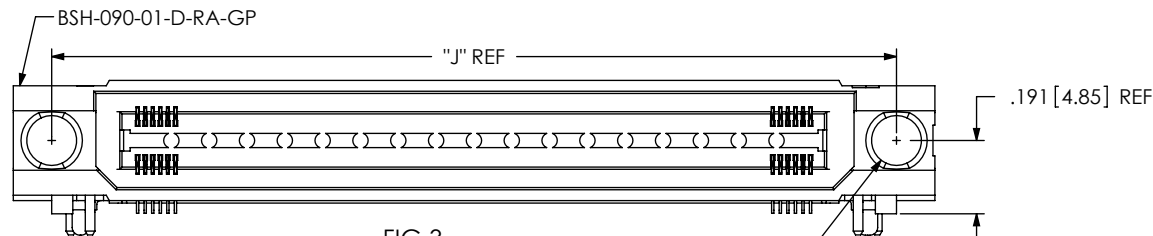
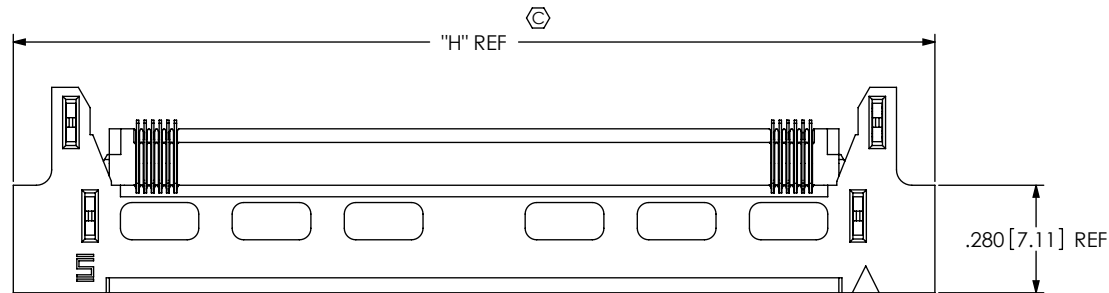


FIG 3  
BSH-090-01-X-D-RA-WT-GP SHOWN  
(SAME AS FIG 1, EXCEPT AS SHOWN)

# PROPRIETARY NOTE

THIS DOCUMENT CONTAINS INFORMATION  
CONFIDENTIAL AND PROPRIETARY TO  
SAMTEC, INC. AND SHALL NOT BE REPRODUCED  
OR TRANSFERRED TO OTHER DOCUMENTS OR  
DISCLOSED TO OTHERS OR USED FOR ANY  
PURPOSE OTHER THAN THAT WHICH IT WAS  
OBTAINED WITHOUT THE EXPRESSED WRITTEN  
CONSENT OF SAMTEC, INC.

DO NOT SCALE DRAWING

SHEET SCALE: 2:1

**samtec**

520 PARK EAST BLVD, NEW ALBANY, IN 47150  
PHONE: 812-944-6733 FAX: 812-948-5047  
e-Mail info@SAMTEC.com code 55322

DESCRIPTION:

.50mm DOUBLE ROW RIGHT ANGLE SOCKET STRIP

DWG. NO.

BSH-XXX-XX-X-D-RA-WT-XXX

BY: KNOWLDEN 7/21/2011 SHEET 3 OF 3

# Mouser Electronics

Authorized Distributor

Click to View Pricing, Inventory, Delivery & Lifecycle Information:

[Samtec:](#)

[BSH-030-01-F-D-RA-WT-GP](#) [BSH-060-01-F-D-RA-WT-GP](#)