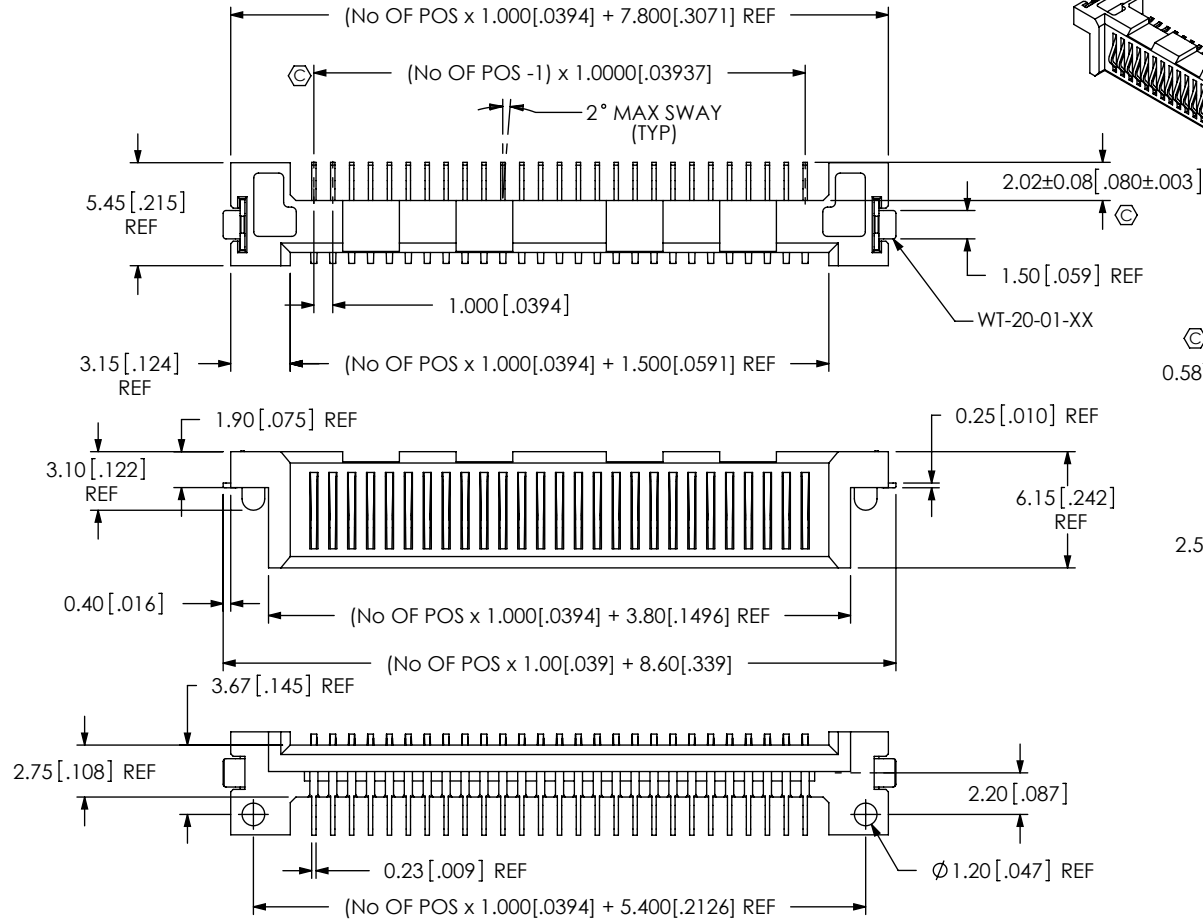


NOTES:

1. \odot REPRESENTS A CRITICAL DIMENSION.
2. BURR ALLOWANCE: .038[.0015] MAX.
3. MINIMUM PUSHOUT FORCE: .5 LB.
4. MAXIMUM ALLOWABLE BOW: .05[.002] INCH/INCH AFTER ASSEMBLY.
5. PARTS TO BE PACKAGED IN TUBES.
6. INCLUDES CONTACTS AND WELD TABS.
7. DIMENSION APPLIES FROM LINE FORMED BY BODY TO BOTH THE WELD TAB AND THE SOLDER TAIL. WELD TAB AND SOLDER TAIL MAY BE ABOVE OR BELOW LINE FORMED BY BODY.

DO NOT
SCALE FROM
THIS PRINT

DESIGNED & DIMENSIONED
IN MILLIMETERS[INCHES]



SAL1-1XX-XX-XX-S-A-XX

No OF POSITIONS
-20, -27, -30, & -40

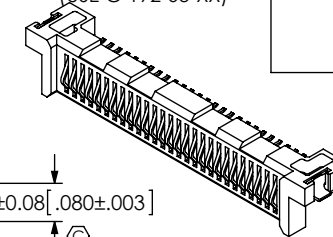
LEAD STYLE
-01:
(USE C-192-03-XX)

OPTIONS
-TR: TAPE & REEL (SEE FIG 3, SHT 2)
(REQUIRED FOR NEW CUSTOMERS)
-K: KAPTON PAD
(SEE FIG 2, SHT 2)

ALIGNMENT PIN

ROW SPECIFICATION
-S: SINGLE (USE SAL1-XX-S-A)

PLATING SPECIFICATION
-S: 30μ" SELECTIVE GOLD IN CONTACT
AREA, MATTE TIN ON TAIL.
(USE C-192-03-S & WT-20-01-T)
-H: 30μ" GOLD IN CONTACT AREA,
3μ" GOLD ON TAIL.
(USE C-192-03-H & WT-20-01-T)
-SM: 30μ" SELECTIVE GOLD IN CONTACT
AREA, MATTE TIN ON TAIL.
(USE C-192-03-S & WT-20-01-TM)



\odot
0.58^{+0.13}_{-0.08} [.023^{+0.005}_{-.003}]

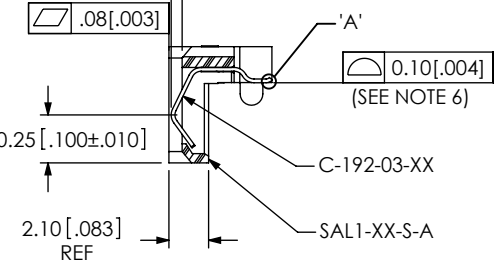
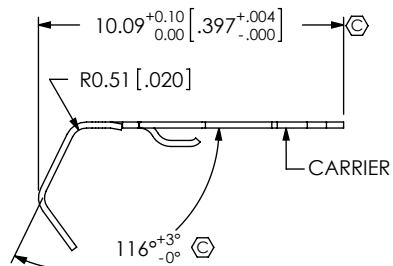


FIG 1
SAL1-127-01-XX-S-A SHOWN

DETAIL 'A'
SCALE 50 : 1



IN-PROCESS

UNLESS OTHERWISE SPECIFIED,
DIMENSIONS ARE IN MILLIMETERS.

TOLERANCES ARE:

DECIMALS	ANGLES
.X: ±.3 [.01]	2°
.XX: ±.13 [.005]	
.XXX: ±.051 [.0020]	

MATERIAL: DO NOT SCALE DRAWING
INSULATOR: LCP, COLOR: BLACK
CONTACT: BeCu

PROPRIETARY NOTE

THIS DOCUMENT CONTAINS INFORMATION
CONFIDENTIAL AND PROPRIETARY TO
SAMTEC, INC. AND SHALL NOT BE REPRODUCED
OR TRANSFERRED TO OTHER DOCUMENTS OR
DISCLOSED TO OTHERS OR USED FOR ANY
PURPOSE OTHER THAN THAT WHICH IT WAS
OBTAINED WITHOUT THE EXPRESSED WRITTEN
CONSENT OF SAMTEC, INC.

SHEET SCALE: 2.5:1

samtec

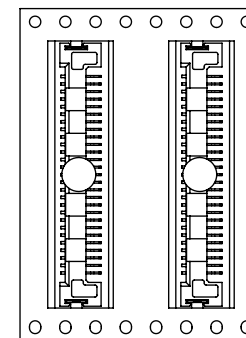
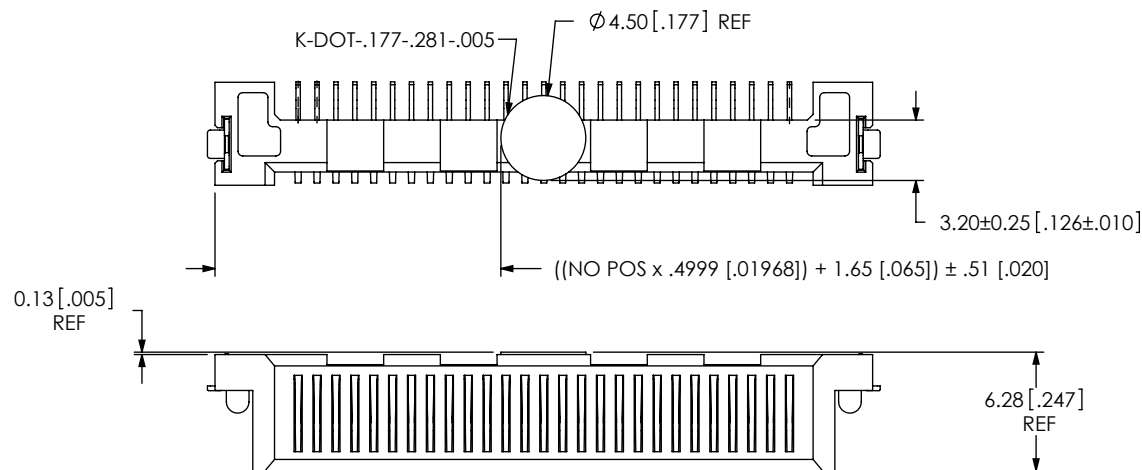
520 PARK EAST BLVD, NEW ALBANY, IN 47150
PHONE: 812-944-6733 FAX: 812-948-5047
e-Mail: info@SAMTEC.com code 55322

DESCRIPTION:
1MM SERIAL ATA LINK CONNECTOR

DWG. NO.
SAL1-1XX-XX-XX-S-A-XX

BY: DEAN P 09-23-2010 SHEET 1 OF 2

FIG 2
SAL1-127-01-XX-S-A-K SHOWN
SAME AS FIG 1 EXCEPT AS SHOWN



USER DIRECTION OF UN-REELING
POCKET NOT DETAILED

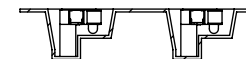
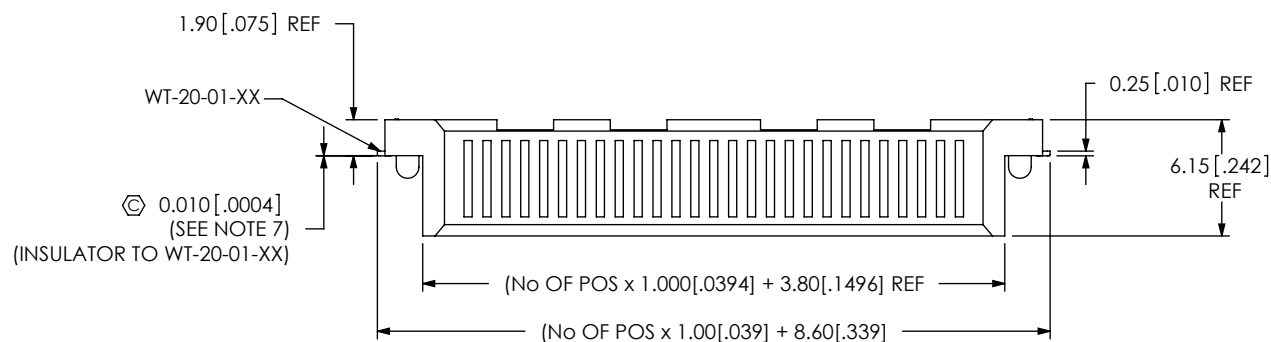
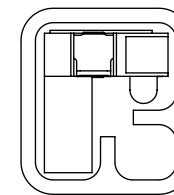


FIG 3
T&R PACKAGING



SUB ASSEMBLY
SUB-SAL1-127-01-XX-XX-S-A SHOWN
(FILL WT-20-01-XX)
(PARTS TO BE BULK PACKAGED)

EXISTING CUSTOMERS ONLY



TUBE PACKAGING
TUBE: PT-1-24-01-144
PLUG: TP-24-02

PROPRIETARY NOTE
THIS DOCUMENT CONTAINS INFORMATION
CONFIDENTIAL AND PROPRIETARY TO
SAMTEC, INC. AND SHALL NOT BE REPRODUCED
OR TRANSFERRED TO OTHER DOCUMENTS OR
DISCLOSED TO OTHERS OR USED FOR ANY
PURPOSE OTHER THAN THAT WHICH IT WAS
OBTAINED WITHOUT THE EXPRESSED WRITTEN
CONSENT OF SAMTEC, INC.

DO NOT SCALE DRAWING

SHEET SCALE: 2.5:1

samtec

520 PARK EAST BLVD, NEW ALBANY, IN 47150
PHONE: 812-944-6733 FAX: 812-948-5047
e-Mail: info@SAMTEC.com code 55322

DESCRIPTION:
1MM SERIAL ATA LINK CONNECTOR

DWG. NO.
SAL1-1XX-XX-XX-S-A-XX

BY: DEAN P 09-23-2010 SHEET 2 OF 2

Mouser Electronics

Authorized Distributor

Click to View Pricing, Inventory, Delivery & Lifecycle Information:

Samtec:

[SAL1-120-01-H-S-A-TR](#) [SAL1-130-01-H-S-A-TR](#)