

DO NOT
SCALE FROM
THIS PRINT

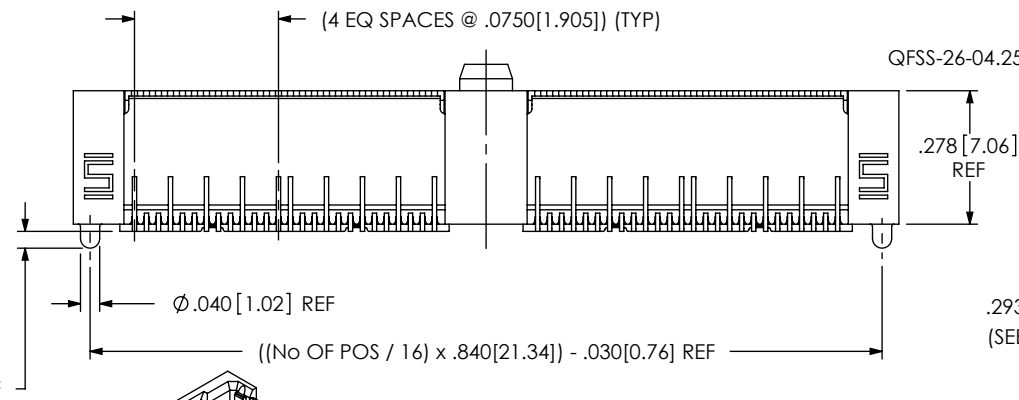
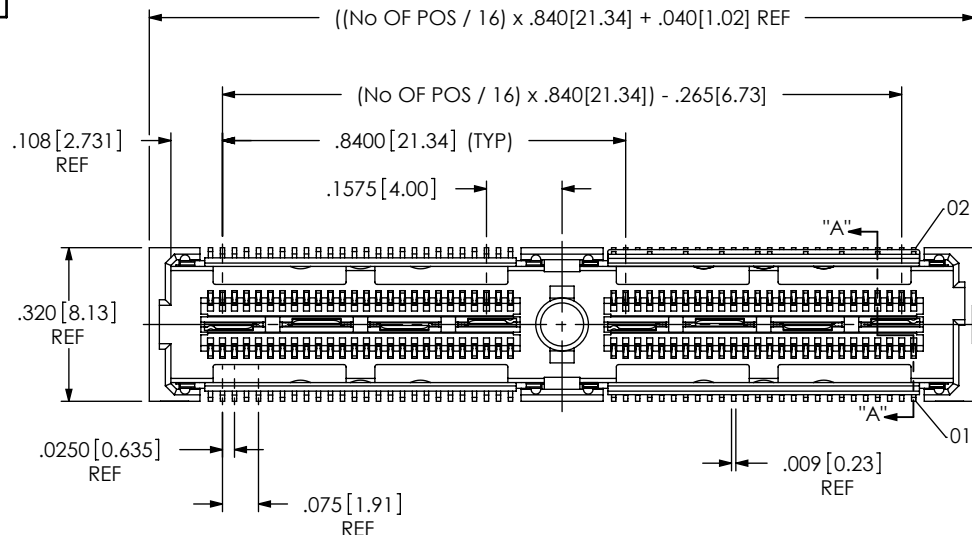
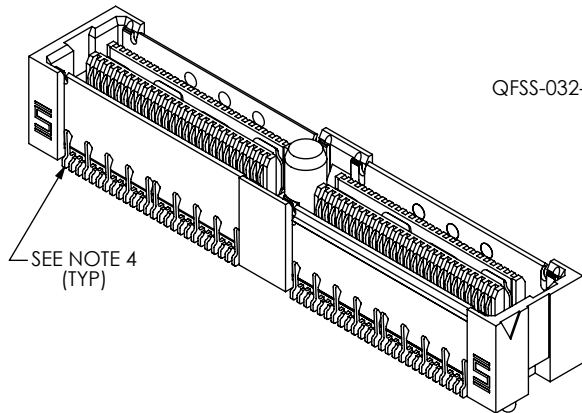


FIG 1
QFSS-032-04.25-X-D-DP-A SHOWN



SEE NOTE 4
(TYP)

NOTES:

1. \odot REPRESENTS A CRITICAL DIMENSION.
2. MAXIMUM BURR ALLOWANCE: .0015 [0.038]
3. MINIMUM PUSHOUT FORCE: SIGNAL: .5 LB, SHIELD/GROUND: 1 LB, POWER: .5 LB.
4. DO NOT SHEAR CONTACTS SHOWN.
5. MAXIMUM VARIANCE: .002 [0.05].
6. DIMENSION APPLIES TO CONTACTS & GROUND PLANE.
7. GROUND PLANE PRESS HEIGHT MUST BE .003 [0.08] LESS THAN THE MAXIMUM HEIGHT OR .001 [0.03] GREATER THAN THE MINIMUM HEIGHT OF THE TERMINAL.
8. PARTS TO BE PACKAGED IN TRAYS AS STANDARD.
9. LEADSTYLE -01 MAY BE SUBSTITUTED IN PART CALLOUT FOR -04.25 FOR EXISTING CUSTOMERS ONLY.

PATENT NUMBERS
6739884/ 7165994
7121849

F:\DWG\MISC\MKTG\QFSS-XXX-XX-XX-X-D-DP-X-XXX-MKT.SLDDRW

QFSS-XXX-XX.XX-X-D-DP-X-XXX

No OF PAIRS
-016, -032, -048,
-064, *-080
(PER ROW)

LEAD STYLE
-04.25 (SEE NOTE 9)

PLATING SPECIFICATION

-L: LIGHT GOLD (USE C-181-04.25-L)
-H: HEAVY GOLD (USE C-181-04.25-H)
(ALL PLATING STYLES USE
SH2-01-L & T-1G20-04.25-L)

ROW SPECIFICATION

-D: DOUBLE

-DP: DIFFERENTIAL PAIRS
SEE FIG. 1 FOR SHIELD
BEAM CONFIGURATION

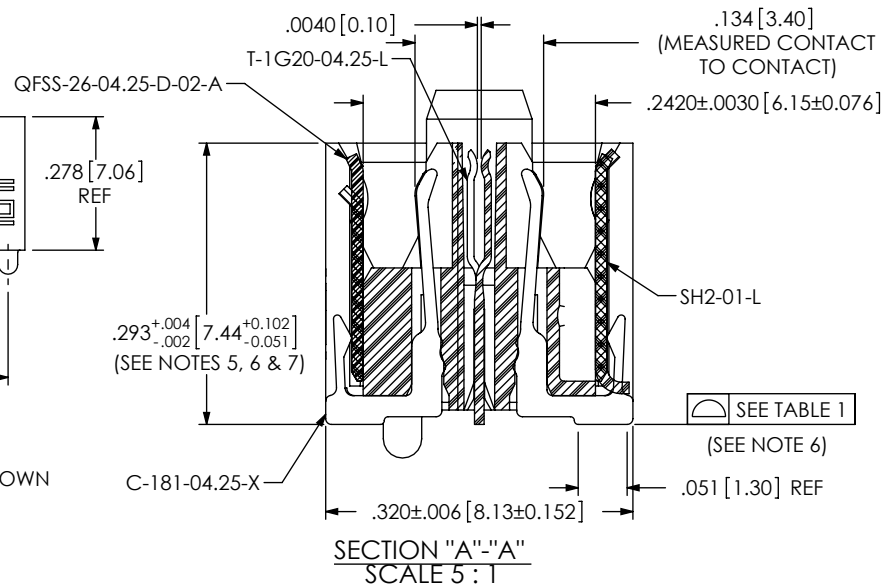
* = NOT TOOLED

OPTION

-BM: BLIND MATE SHIELD (USE ASP-126355-02-P-L)
-GP: GUIDE HOLES
(SEE FIG 2, SHEET 2)
(NOT AVAILABLE WITH -PXX)
-PC4: 4 POWER POS PER END (.062" THICK BOARD)
(SEE FIG 3, SHEET 3)USE C-79-06-S
-PC8: 8 POWER POS PER END (.062" THICK BOARD)
(SEE FIG 3, SHEET 3)USE C-79-06-S
-PT4: 4 POWER POS PER END (.093" THICK BOARD)
(SEE FIG 3, SHEET 3)USE C-79-09-S
-PT8: 8 POWER POS PER END (.093" THICK BOARD)
(SEE FIG 3, SHEET 3)USE C-79-09-S
-TR: TAPE & REEL PACKAGING
(-016 THRU -048 W/O OPTIONS -GP OR -PXX)
(-016 THRU-032 W/ OPTIONS -GP OR -PXX)
[-PXX NOT AVAILABLE WITH -GP AND -A]
[-PXX AVAILABLE ON POSITIONS
-016, -032 & -048 ONLY]

OPTION

-A: ALIGNMENT PIN
(NOT AVAILABLE WITH -PXX)
-P: PICK AND PLACE PAD
(USE PPP-51) (SEE FIG 4, SHT 4)



SECTION "A"-A
SCALE 5:1

TABLE 1

No OF POSITIONS	No OF BANKS	COPLANARITY
-016 THRU -048	1 THRU 3	.004[.10]
-064 AND -080	4 AND 5	.006[.15]

UNLESS OTHERWISE SPECIFIED,
DIMENSIONS ARE IN INCHES.

TOLERANCES ARE:

DECIMALS ANGLES
.XX: $\pm .01 [3]$ 2°
.XXX: $\pm .005 [13]$
.XXXX: $\pm .0020 [051]$

PROPRIETARY NOTE

THIS DOCUMENT CONTAINS INFORMATION
CONFIDENTIAL AND PROPRIETARY TO
SAMTEC, INC. AND SHALL NOT BE REPRODUCED
OR TRANSFERRED TO OTHER DOCUMENTS OR
DISCLOSED TO OTHERS OR USED FOR ANY
PURPOSE OTHER THAN THAT WHICH IT WAS
OBTAINED WITHOUT THE EXPRESSED WRITTEN
CONSENT OF SAMTEC, INC.

MATERIAL: DO NOT SCALE DRAWING
INSULATOR: VECTRA E130, COLOR: BLACK
TERMINAL, GROUND PLANE,
& SHIELD: PHOS BRONZE:

SHEET SCALE: 2.5:1

DESCRIPTION:
.635mm DIFFERENTIAL PAIRS SHIELDED TERMINAL STRIP

DWG. NO.

QFSS-XXX-XX.XX-X-D-DP-X-XXX

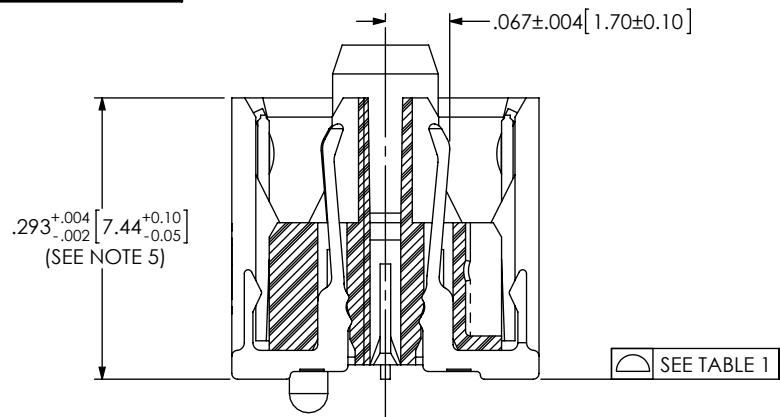
BY: BRATCHER 08/26/2003 SHEET 1 OF 4

samtec

520 PARK EAST BLVD, NEW ALBANY, IN 47150
PHONE: 812-944-6733 FAX: 812-948-5047
e-Mail: info@SAMTEC.com code 55322

REVISION X

IN-PROCESS 1



CONTACT DETAILS

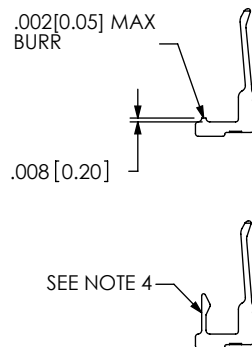


TABLE 2

ASSEMBLY	"A"	"B"
QFSS-016-04.25-X-D-DP-A-GP	1.050[26.67]	1.330[33.78]
QFSS-032-04.25-X-D-DP-A-GP	1.890[48.00]	2.170[55.12]
QFSS-048-04.25-X-D-DP-A-GP	2.730[69.34]	3.010[76.45]
QFSS-064-04.25-X-D-DP-A-GP	3.570[90.68]	3.850[97.79]
QFSS-080-04.25-X-D-DP-A-GP	4.410[112.01]	4.690[119.13]

IN-PROCESS 2

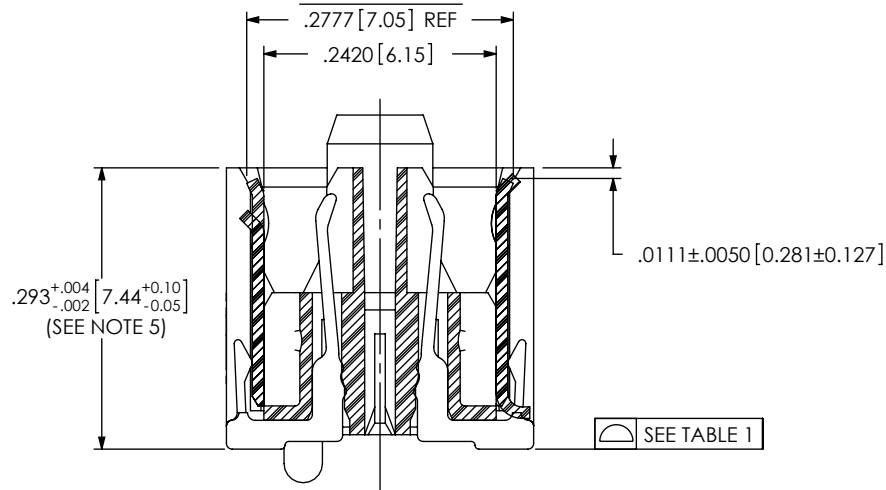
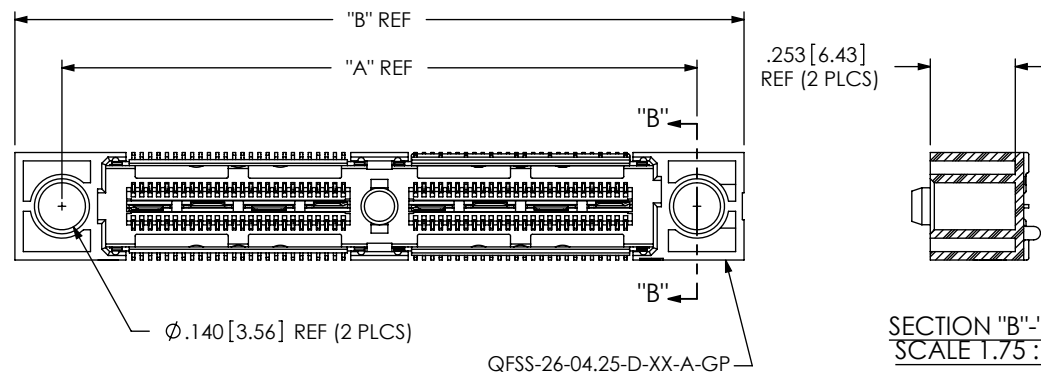


FIG 2

-GP: GUIDE HOLE OPTION
(QFSS-032-04.25-X-D-DP-A-GP SHOWN)
(NOT AVAILABLE WITH -PXX OPTIONS)



PROPRIETARY NOTE

THIS DOCUMENT CONTAINS INFORMATION
CONFIDENTIAL AND PROPRIETARY TO
SAMTEC, INC. AND SHALL NOT BE REPRODUCED
OR TRANSFERRED TO OTHER DOCUMENTS OR
DISCLOSED TO OTHERS OR USED FOR ANY
PURPOSE OTHER THAN THAT WHICH IT WAS
OBTAINED WITHOUT THE EXPRESSED WRITTEN
CONSENT OF SAMTEC, INC.

DO NOT SCALE DRAWING

SHEET SCALE: 2.5:1

samtec

520 PARK EAST BLVD, NEW ALBANY, IN 47150
PHONE: 812-944-6733 FAX: 812-948-5047
e-Mail: info@SAMTEC.com code 55322

DESCRIPTION:
.635mm DIFFERENTIAL PAIRS SHIELDED TERMINAL STRIP

DWG. NO.
QFSS-XXX-XX.XX-X-D-DP-X-XXX

BY: BRATCHER 08/26/2003 SHEET 2 OF 4

REVISION X

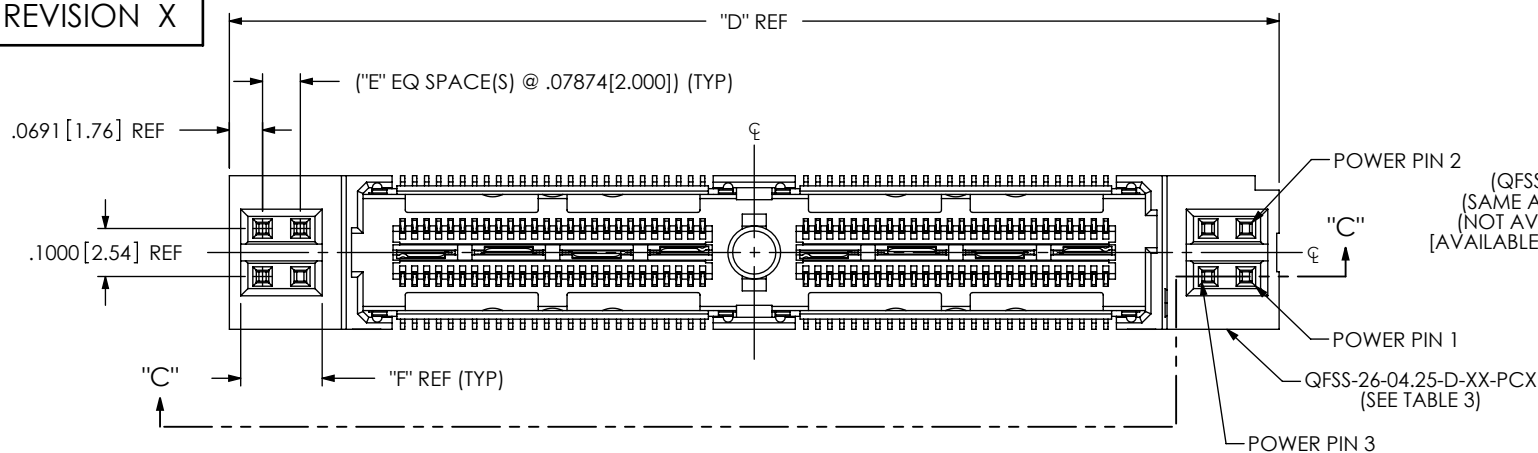
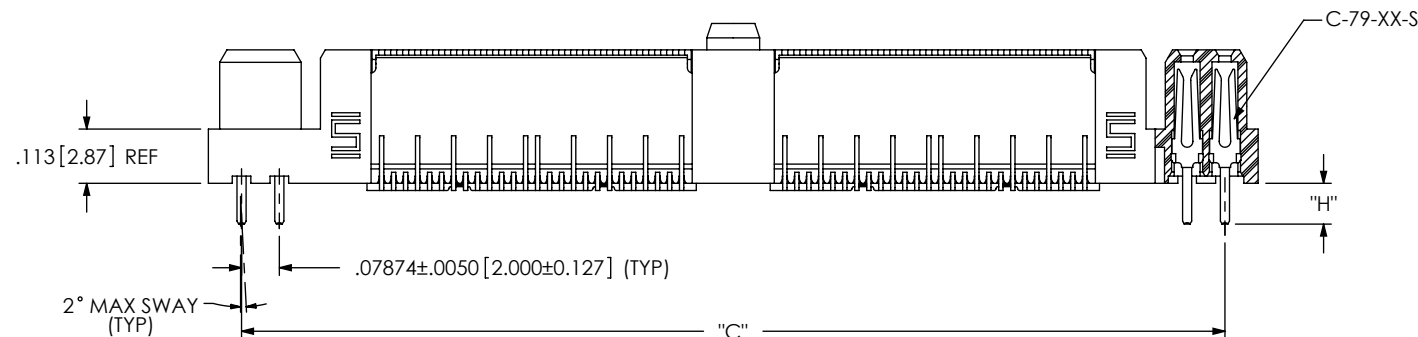


FIG 3

POWER COMBO OPTIONS
(QFSS-032-04.25-X-D-DP-PC4 SHOWN)
(SAME AS FIG 1, UNLESS OTHERWISE STATED)
(NOT AVAILABLE WITH -GP AND -A OPTIONS)
(AVAILABLE ON -016, -032 & -048 POSITIONS ONLY)



SECTION "C"-"C"

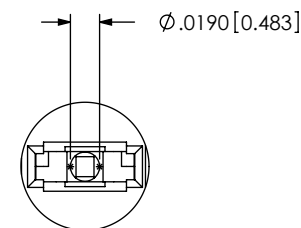
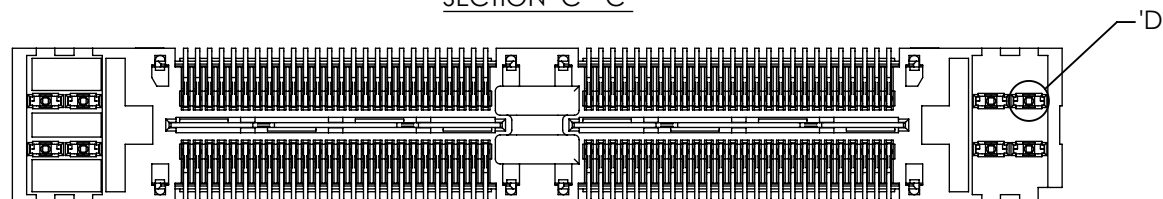
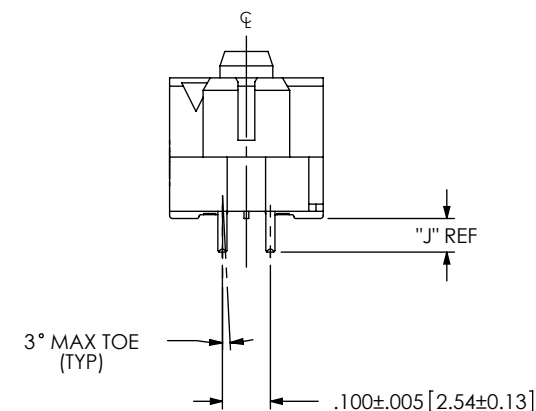
DETAIL 'D'
SCALE 8:1

TABLE 4

POWER OPTION	CONTACT	"H"	"J"
PC4/PC8	C-79-06-S	.085 [2.16]	.070 [1.78]
PT4/PT8	C-79-09-S	.125 [3.18]	.110 [2.79]

TABLE 3

ASSEMBLY	QFSS-26-04.25-D-XX-PCX	"C"	"D"	"E"	"F"
QFSS-016-04.25-X-D-DP-X-PX4	QFSS-26-04.25-D-01-PC4	1.209[30.70]	1.347[34.21]	1	.170[4.31]
QFSS-016-04.25-X-D-DP-X-PX8	QFSS-26-04.25-D-01-PC8	1.524[38.70]	1.662[42.21]	3	.327[8.31]
QFSS-032-04.25-X-D-DP-X-PX4	QFSS-26-04.25-D-02-PC4	2.049[52.04]	2.187[55.55]	1	.170[4.31]
QFSS-032-04.25-X-D-DP-X-PX8	QFSS-26-04.25-D-02-PC8	2.364[60.04]	2.502[63.55]	3	.327[8.31]
QFSS-048-04.25-X-D-DP-X-PX4	QFSS-26-04.25-D-03-PC4	2.889[73.37]	3.027[76.89]	1	.170[4.31]
QFSS-048-04.25-X-D-DP-X-PX8	QFSS-26-04.25-D-03-PC8	3.204[81.37]	3.342[84.89]	3	.327[8.31]

PROPRIETARY NOTE

THIS DOCUMENT CONTAINS INFORMATION
CONFIDENTIAL AND PROPRIETARY TO
SAMTEC, INC. AND SHALL NOT BE REPRODUCED
OR TRANSFERRED TO OTHER DOCUMENTS OR
DISCLOSED TO OTHERS OR USED FOR ANY
PURPOSE OTHER THAN THAT WHICH IT WAS
OBTAINED WITHOUT THE EXPRESSED WRITTEN
CONSENT OF SAMTEC, INC.

DO NOT SCALE DRAWING

SHEET SCALE: 2.5:1

samtec

520 PARK EAST BLVD, NEW ALBANY, IN 47150
PHONE: 812-944-6733 FAX: 812-948-5047
e-Mail: info@SAMTEC.com code 55322

DESCRIPTION:

.635mm DIFFERENTIAL PAIRS SHIELDED TERMINAL STRIP

DWG. NO.

QFSS-XXX-XX.XX-X-D-DP-X-XXX

BY: BRATCHER 08/26/2003 SHEET 3 OF 4

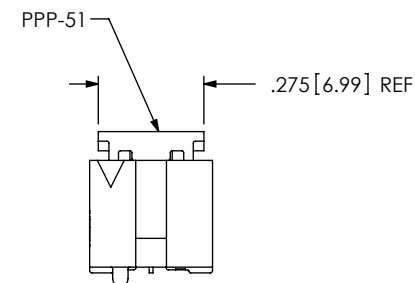
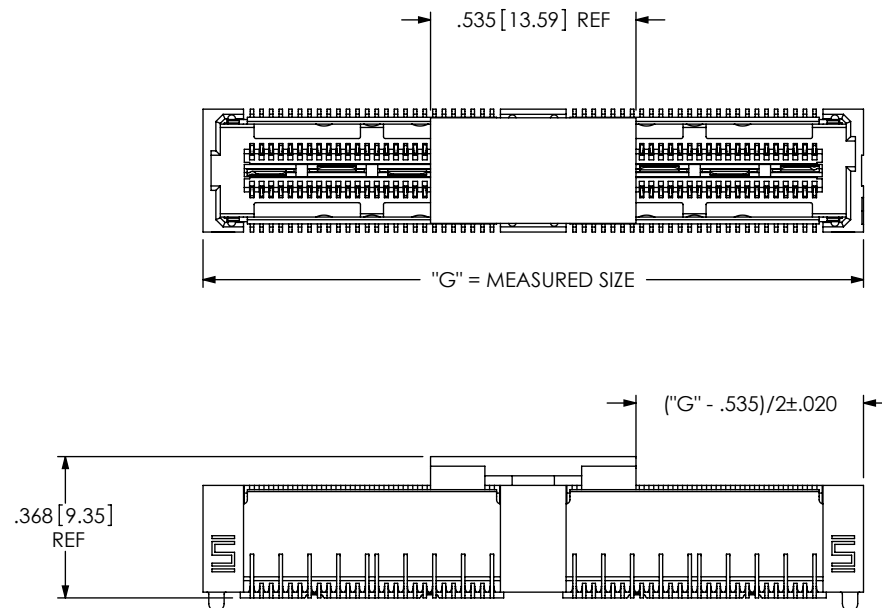
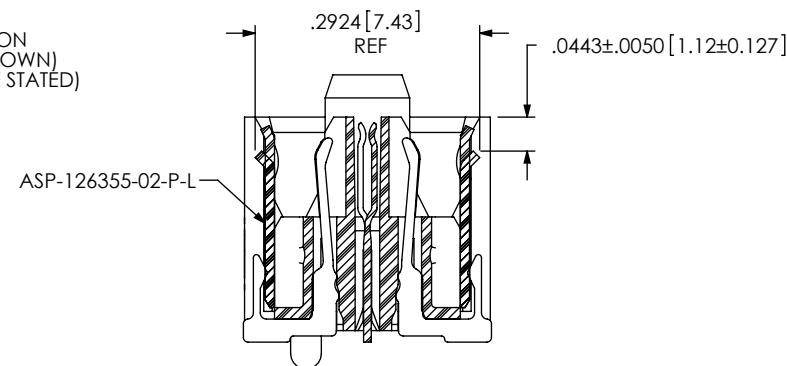
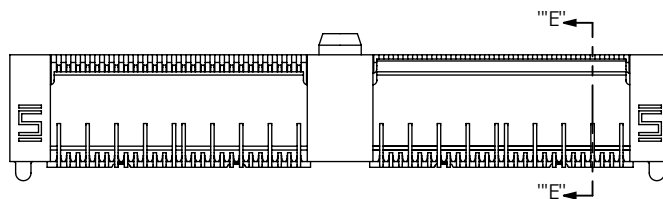


FIG 5
-BM: BLIND MATE SHIELD OPTION
(QFSS-032-04.25-X-D-DP-A-BM SHOWN)
(SAME AS FIG 1, UNLESS OTHERWISE STATED)



SECTION "E"-"E"
SCALE 4 : 1

PROPRIETARY NOTE
THIS DOCUMENT CONTAINS INFORMATION
CONFIDENTIAL AND PROPRIETARY TO
SAMTEC, INC. AND SHALL NOT BE REPRODUCED
OR TRANSFERRED TO OTHER DOCUMENTS OR
DISCLOSED TO OTHERS OR USED FOR ANY
PURPOSE OTHER THAN THAT WHICH IT WAS
OBTAINED WITHOUT THE EXPRESSED WRITTEN
CONSENT OF SAMTEC, INC.

DO NOT SCALE DRAWING

SHEET SCALE: 2.5:1

samtec

520 PARK EAST BLVD, NEW ALBANY, IN 47150
PHONE: 812-944-6733 FAX: 812-948-5047
e-Mail: info@SAMTEC.com code 55322

DESCRIPTION:
.635mm DIFFERENTIAL PAIRS SHIELDED TERMINAL STRIP
DWG. NO.

QFSS-XXX-XX.XX-X-D-DP-X-XXX

BY: BRATCHER 08/26/2003 SHEET 4 OF 4

Mouser Electronics

Authorized Distributor

Click to View Pricing, Inventory, Delivery & Lifecycle Information:

Samtec:

[QFSS-016-04.25-L-D-DP-A-TR](#)