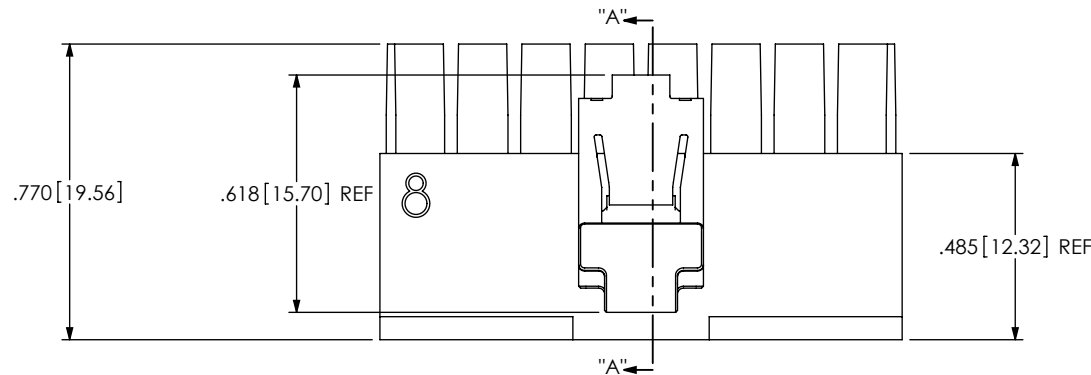


NOTES:

1. ⌀ REPRESENTS A CRITICAL DIMENSION.
2. BURR ALLOWANCE: .0015[.038] MAX.
3. LATCH RETENTION FORCE: 1.000LB[4.45N]
4. POSITIONS 2 THRU 5 TO BE BULK PACKAGED, ALL OTHER POSITIONS TO BE TUBED

DO NOT
SCALE FROM
THIS PRINT

FIG 1
(IPBD-02-S-M SHOWN)



IPBD-XX-S-X-M

No OF POSITIONS
-02 THRU -10

METAL RETENTION LATCH
-M: METAL LATCH (USE LTC-14-01-N)

ROW SPECIFICATION
-S: SINGLE

POLARIZATION OPTION
* -K: KEYED POLARIZATION (SEE FIG 3)

*(LEAVE BLANK FOR NO POLARIZATION. SAMTEC WILL ONLY SUPPORT EXISTING BUSINESS AS OF REV A.)

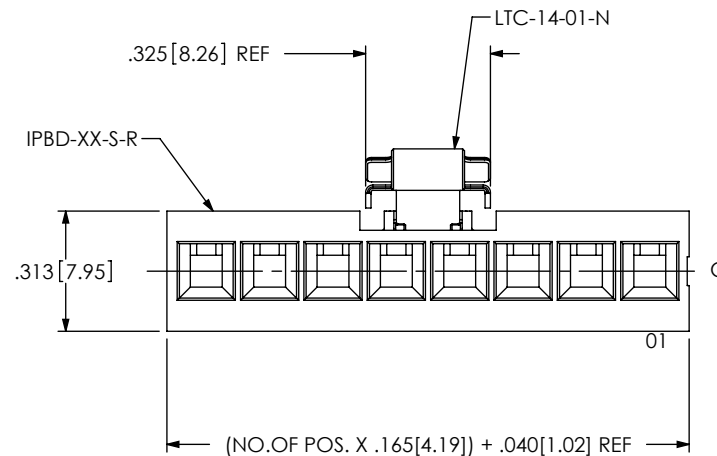
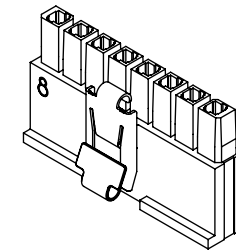
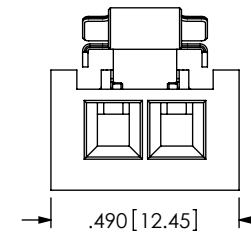
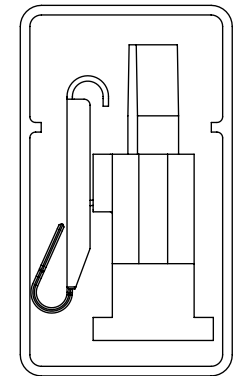


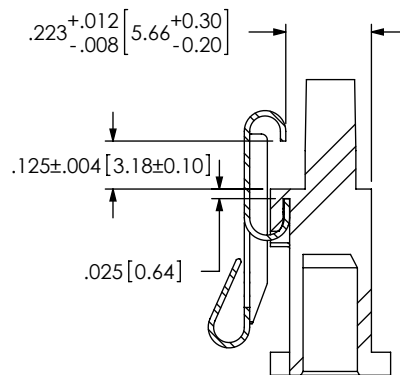
FIG 2
(IPBD-02-S-M SHOWN)
(SAME AS FIG 1 DIFFERENT
AS SHOWN)



PACKAGING VIEW
(SEE NOTE 4)

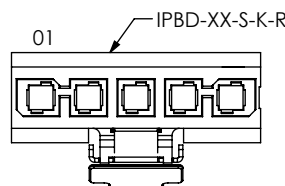


TUBE: PT-1-24-02-74
PLUG: TP-04



SECTION "A"-"A"

FIG 3
(IPBD-05-S-K-M SHOWN)
(SAME AS FIG 1 DIFFERENT AS SHOWN)



UNLESS OTHERWISE SPECIFIED,
DIMENSIONS ARE IN INCHES.
TOLERANCES ARE:

| DECIMALS | ANGLES |
|----------------------|--------|
| .XX: ±.01 [.3] | 2° |
| .XXX: ±.005 [.13] | |
| .XXXX: ±.0020 [.051] | |

PROPRIETARY NOTE

THIS DOCUMENT CONTAINS INFORMATION
CONFIDENTIAL AND PROPRIETARY TO
SAMTEC, INC. AND SHALL NOT BE REPRODUCED
OR TRANSFERRED TO OTHER DOCUMENTS OR
DISCLOSED TO OTHERS OR USED FOR ANY
PURPOSE OTHER THAN THAT WHICH IT WAS
OBTAINED WITHOUT THE EXPRESSED WRITTEN
CONSENT OF SAMTEC, INC.

MATERIAL: DO NOT SCALE DRAWING SHEET SCALE: 2:1
INSULATOR: NYLON 6/6
LATCH: NICKEL-PLATED BeCu, #25, 1/2HT

samtec

520 PARK EAST BLVD, NEW ALBANY, IN 47150
PHONE: 812-944-6733 FAX: 812-948-5047
e-Mail: info@SAMTEC.com code 55322

DESCRIPTION:
.165[4.19] DISCRETE WIRE INSULATOR & LATCH ASM

DWG. NO. IPBD-XX-S-X-M

BY: TALON Z 11/18/2009 SHEET 1 OF 1

Mouser Electronics

Authorized Distributor

Click to View Pricing, Inventory, Delivery & Lifecycle Information:

Samtec:

[IPBD-06-S-K-M](#) [IPBD-07-S-K-M](#) [IPBD-09-S-K-M](#)