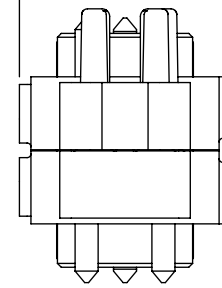
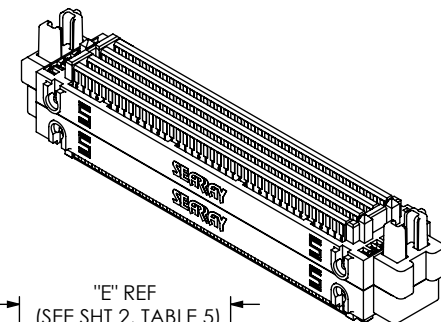
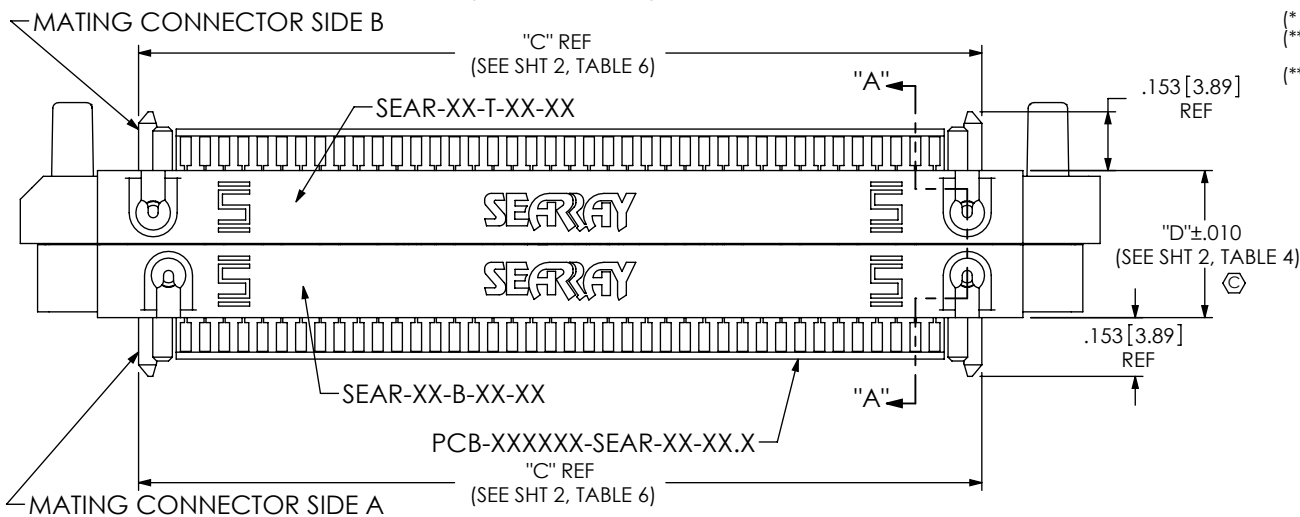
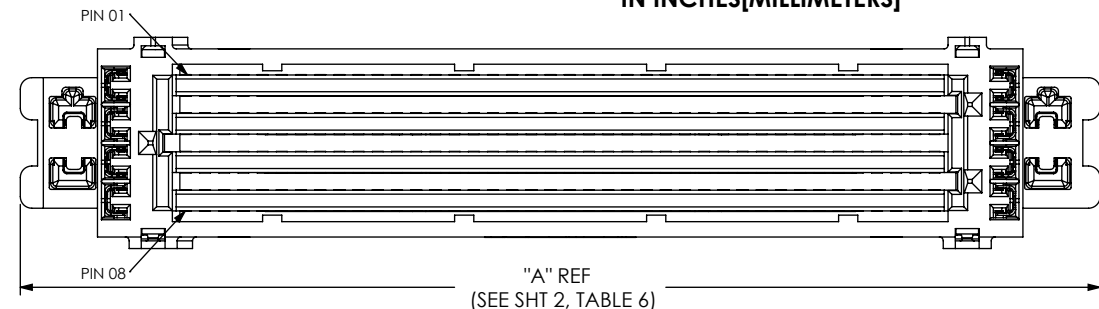


DO NOT
SCALE FROM
THIS PRINTDESIGNED & DIMENSIONED
IN INCHES[MILLIMETERS]

SEAR-XX-XX.X-XX-XXXX

No OF POSITIONS
*-10, *.15, **20, *.30,
-40, -50 (PER ROW)
(SEE NOTE 7)LEAD STYLE
-10.0: 10mm
-20.0: 20mm
-30.0: 30mm
**-31.0: 31mmROW
*.04: 4 ROW
-06: 6 ROW
-08: 8 ROW
-10: 10 ROWOHMS
*.050: 50 OHMS
SINGLE-ENDED ONLY
(GSGSGSG....)
-085: 85 OHMS
DIFFERENTIAL PAIR ONLY
(GSSGSSGSG...)
*-100: 100 OHMS
DIFFERENTIAL PAIR ONLY
(GSSGSSGSG...)
**-085Q: 85 OHMS
LOW CROSSTALK FOR
QPI APPLICATIONS(* = NOT TOOLED)
(** = TOOLED ONLY IN -20 & -40 POS, -31.0mm
LEADSTYLE)
(***= TOOLED ONLY FOR -085Q OHM OPTION)

NOTES:

1. REPRESENTS A CRITICAL DIMENSION.
2. ALIGN WITH MATING CONNECTOR SIDE A SEAF PIN 1 INDICATOR.
3. PCB CENTERING CLIP RETENTION TO BE TBD.
4. PCB PAD PLATED WITH .000030 INCHES GOLD WITH A HARDNESS OF 130-200 KNOOP PER ASTM B 488 TYPE 2, GRADE C.
5. DOWEL PIN RETENTION AFTER HEAT STAKE TO BE 1.0LBS[4.44N] MIN.
6. ASSEMBLIES TO BE PACKAGED IN TUBES.
7. -20 POSITION ONLY AVAILABLE IN 10 ROW.

FIG 1
SEAR-40-10.0-08-085 SHOWN

| TABLE 1 STACK HEIGHT | | | | | |
|-------------------------------------|-------------------------------------|-----------------|-------|-------|-------|
| CONNECTOR SIDE A SEAF LEAD STYLE | CONNECTOR SIDE B SEAF LEAD STYLE | SEAR LEAD STYLE | | | |
| | | -10.0 | -20.0 | -30.0 | -31.0 |
| -05.0 | -05.0 | 20mm | 30mm | 40mm | 31mm |

| TABLE 2 | | | |
|-------------------------------|---------------------|------------------------|-------------------------|
| SEAR ASSEMBLY (LEAD STYLE) | TOP BODY CALLOUT | BOTTOM BODY CALLOUT | PCB P/N |
| SEAR-XX-10.0-XX-XXX | SEAR-XX-T-01-XX | SEAR-XX-B-01-XX | PCB-XXXXXX-SEAR-XX-10.0 |
| SEAR-XX-20.0-XX-XXX | SEAR-XX-T-02-XX | SEAR-XX-B-01-XX | PCB-XXXXXX-SEAR-XX-20.0 |
| SEAR-XX-30.0-XX-XXX | SEAR-XX-T-02-XX | SEAR-XX-B-02-XX | PCB-XXXXXX-SEAR-XX-30.0 |
| SEAR-XX-31.0-XX-085Q | SEAR-XX-T-02-XX | SEAR-XX-B-02-XX | PCB-XXXXXX-SEAR-XX-31.0 |

UNLESS OTHERWISE SPECIFIED,
DIMENSIONS ARE IN INCHES.

TOLERANCES ARE:

| DECIMALS | ANGLES |
|----------------------|--------|
| .XX: ±.01 [.3] | 2° |
| .XXX: ±.003 [.08] | |
| .XXXX: ±.0020 [.051] | |

PROPRIETARY NOTE

THIS DOCUMENT CONTAINS INFORMATION
CONFIDENTIAL AND PROPRIETARY TO
SAMTEC, INC. AND SHALL NOT BE REPRODUCED
OR TRANSFERRED TO OTHER DOCUMENTS OR
DISCLOSED TO OTHERS OR USED FOR ANY
PURPOSE OTHER THAN THAT WHICH IT WAS
OBTAINED WITHOUT THE EXPRESSED WRITTEN
CONSENT OF SAMTEC, INC.

MATERIAL: DO NOT SCALE DRAWING
INSULATOR: LCP, COLOR: BLACK
CLIP: COPPER ALLOY
PCB: FR4, COPPER

SHEET SCALE: 2:1

samtec
520 PARK EAST BLVD, NEW ALBANY, IN 47150
PHONE: 812-944-6733 FAX: 812-948-5047
e-Mail: info@SAMTEC.com code 55322

DESCRIPTION:

SEAR RISER ASSEMBLY

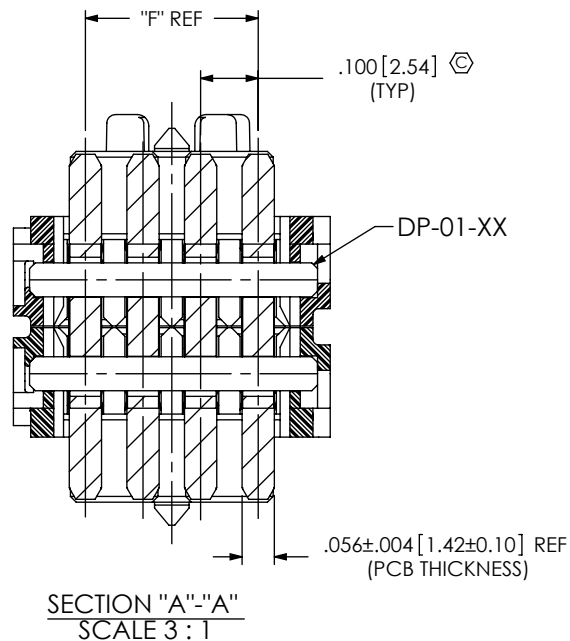
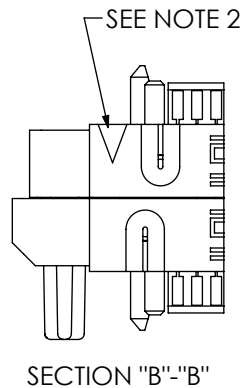
DWG. NO.

SEAR-XX-XX.X-XX-XXXX

BY: R MUSSER 05/06/2010

SHEET 1 OF 6

F:\DWG\MISC\MKTG\SEAR-XX-XX.X-XX-XXXX-MKT.SLDDRW



| TABLE 4 | |
|----------|---------------|
| STYLE | "D" |
| -10.0 | .383 [9.73] |
| -20.0 | .777 [19.73] |
| -30.0 | 1.170 [29.73] |
| ***-31.0 | 1.210 [30.73] |

(***= TOOLED ONLY FOR
-085Q OHM OPTION)

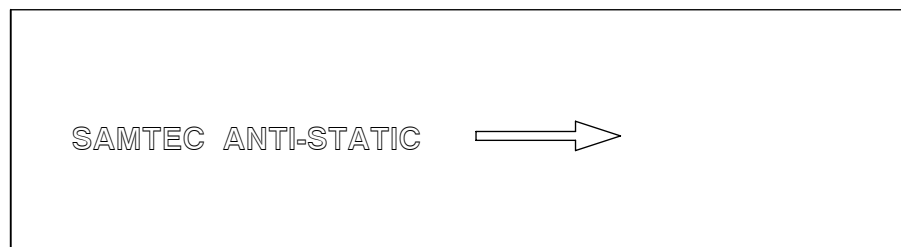
| TABLE 5 | | | |
|-------------|--------------|--------------|----------|
| No. OF ROWS | "E" | "F" | DP-01-XX |
| *-04 | .350 [8.89] | .100 [2.54] | DP-01-04 |
| -06 | .450 [11.43] | .200 [5.08] | DP-01-06 |
| -08 | .550 [13.97] | .300 [7.62] | DP-01-08 |
| -10 | .650 [16.51] | .400 [10.16] | DP-01-10 |

(* = NOT TOOLED)

| TABLE 6 | | | |
|------------|---------------|---------------|---------------|
| No. OF POS | "A" | "B" | "C" |
| *-10 | 1.312 [33.32] | 1.222 [31.04] | .696 [17.68] |
| *-15 | 1.562 [39.67] | 1.472 [37.39] | .946 [24.03] |
| ***-20 | 1.812 [46.02] | 1.722 [43.74] | 1.196 [30.38] |
| *-30 | 2.312 [58.72] | 2.222 [56.44] | 1.696 [43.08] |
| -40 | 2.812 [71.42] | 2.722 [69.14] | 2.196 [55.78] |
| -50 | 3.312 [84.12] | 3.222 [81.84] | 2.696 [68.48] |

(* = NOT TOOLED; *** = TOOLED ONLY FOR 085Q OPTION)

| TABLE 3 | |
|-------------------------|-------------------------|
| SEAR ASSEMBLY (OHMS) | PCB P/N |
| SEAR-XX-XX.X-XX-050 | PCB-102598-SEAR-XX-XX.X |
| SEAR-XX-XX.X-XX-085 | PCB-102596-SEAR-XX-XX.X |
| SEAR-20-31.0-10-085Q | PCB-105033-SEAR-20-31.0 |
| SEAR-40-31.0-XX-085Q | PCB-105033-SEAR-40-31.0 |
| SEAR-XX-XX.X-XX-100 | PCB-102597-SEAR-XX-XX.X |



SEE TABLE 7

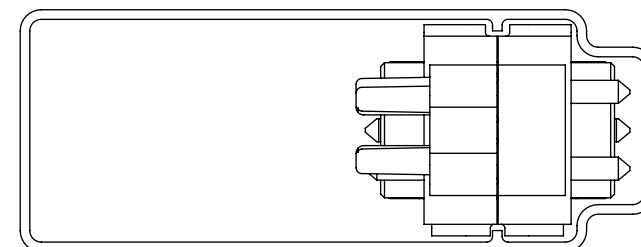
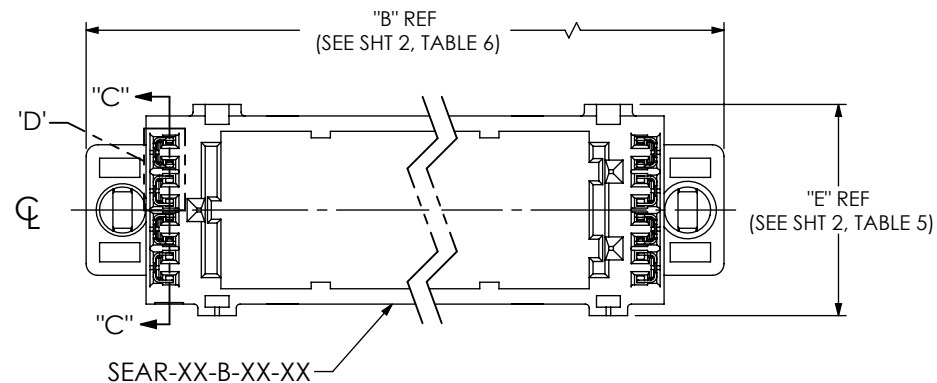
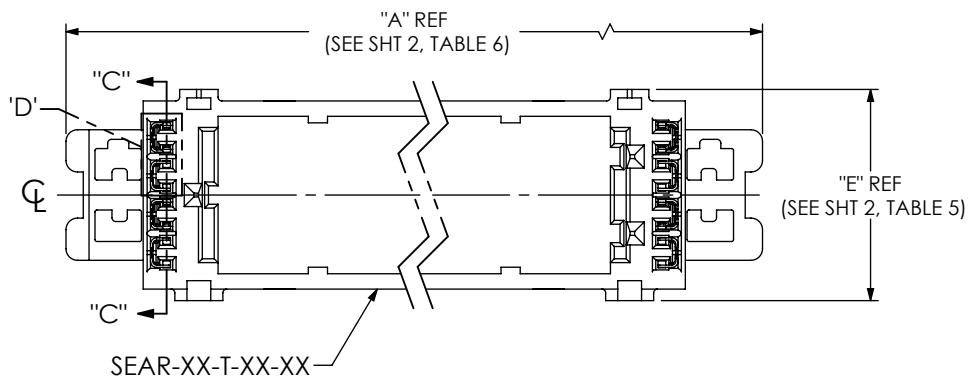


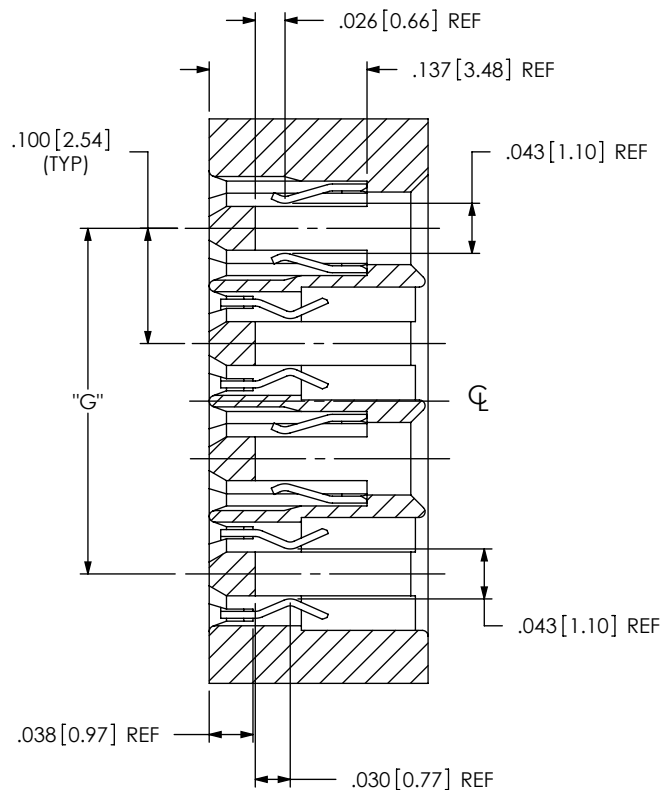
FIG. 2
SEAR-40-10.0-08 SHOWN
(SHOWN IN PACKAGING TUBE)

| TABLE 7 | | |
|-------------------------------|--------------------|----------------------------|
| SEAR ASSEMBLY (LEAD STYLE) | PACKAGING TUBE P/N | TUBE PLUG P/N (2 REQ'D) |
| SEAR-XX-XX.X-06 | PT-SEAR001-06 | TP-31 |
| SEAR-XX-XX.X-08 | PT-SEAR002-08 | TP-31 |
| SEAR-XX-XX.X-10 | PT-SEAR003-10 | TP-31 |

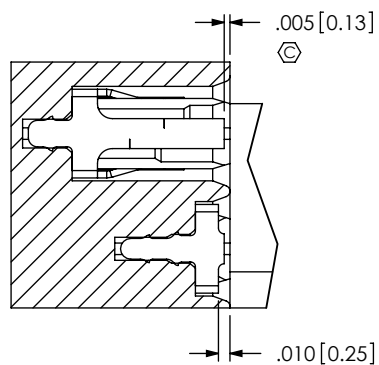
| | | |
|---|--|---------------------|
| <p>PROPRIETARY NOTE THIS DOCUMENT CONTAINS INFORMATION CONFIDENTIAL AND PROPRIETARY TO SAMTEC, INC. AND SHALL NOT BE REPRODUCED OR TRANSFERRED TO OTHER DOCUMENTS OR DISCLOSED TO OTHERS OR USED FOR ANY PURPOSE OTHER THAN THAT WHICH IT WAS OBTAINED WITHOUT THE EXPRESSED WRITTEN CONSENT OF SAMTEC, INC.</p> <p>DO NOT SCALE DRAWING</p> <p>SHEET SCALE: 2:1</p> | <p>520 PARK EAST BLVD, NEW ALBANY, IN 47150 PHONE: 812-944-6733 FAX: 812-948-5047 e-Mail: info@SAMTEC.com code 55322</p> | |
| | <p>DESCRIPTION:</p> <p>SEAR RISER ASSEMBLY</p> | |
| | <p>DWG. NO.</p> <p>SEAR-XX-XX.X-XX-XXXX</p> | |
| | <p>BY: R MUSSER 05/06/2010</p> | <p>SHEET 2 OF 6</p> |



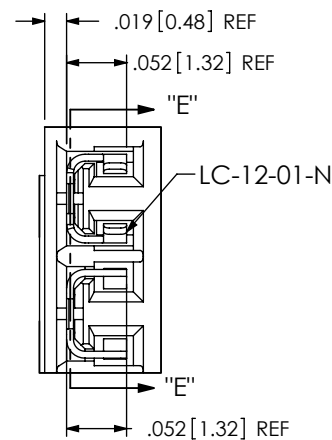
IN PROCESS 1
(INSERT PCB CENTERING CLIPS INTO BODIES)
(SEE NOTE 3)



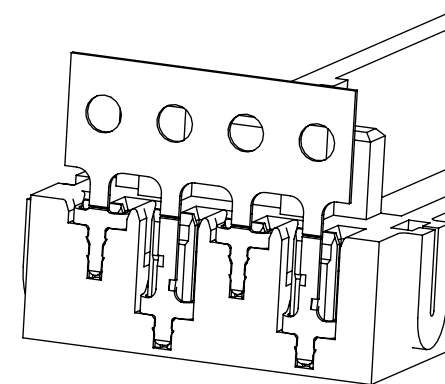
SECTION "C"-"C"
SCALE 6 : 1



SECTION "E"-"E"
SCALE 6 : 1



DETAIL 'D'
SCALE 6 : 1



| TABLE 7 | |
|-------------|--------------|
| No. OF ROWS | "G" |
| *-04 | .100 [2.54] |
| -06 | .200 [5.08] |
| -08 | .300 [7.62] |
| -10 | .400 [10.16] |

(* = NOT TOOLED)

PROPRIETARY NOTE
THIS DOCUMENT CONTAINS INFORMATION
CONFIDENTIAL AND PROPRIETARY TO
SAMTEC, INC. AND SHALL NOT BE REPRODUCED
OR TRANSFERRED TO OTHER DOCUMENTS OR
DISCLOSED TO OTHERS OR USED FOR ANY
PURPOSE OTHER THAN THAT WHICH IT WAS
OBTAINED WITHOUT THE EXPRESSED WRITTEN
CONSENT OF SAMTEC, INC.

DO NOT SCALE DRAWING

SHEET SCALE: 2:1

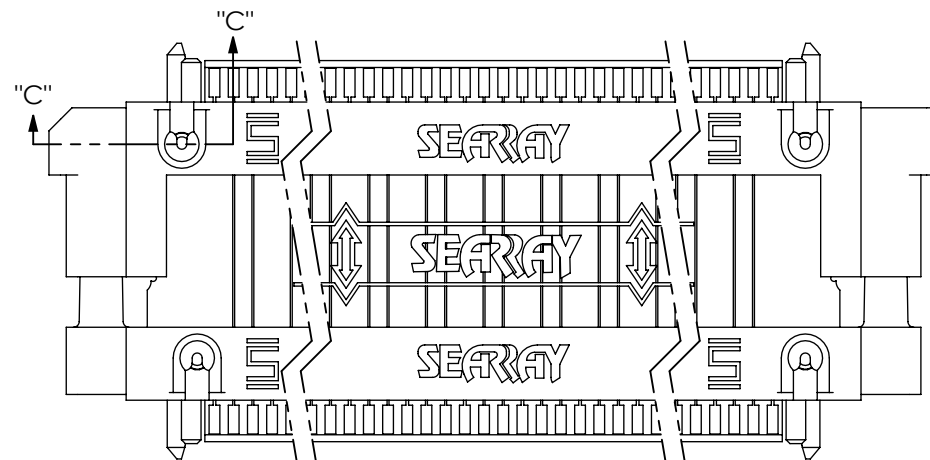
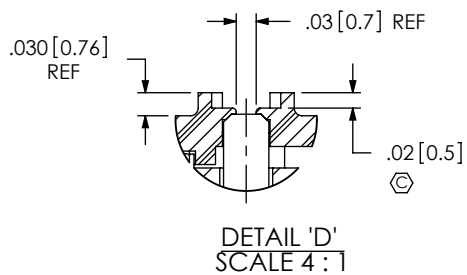
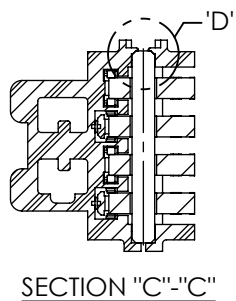
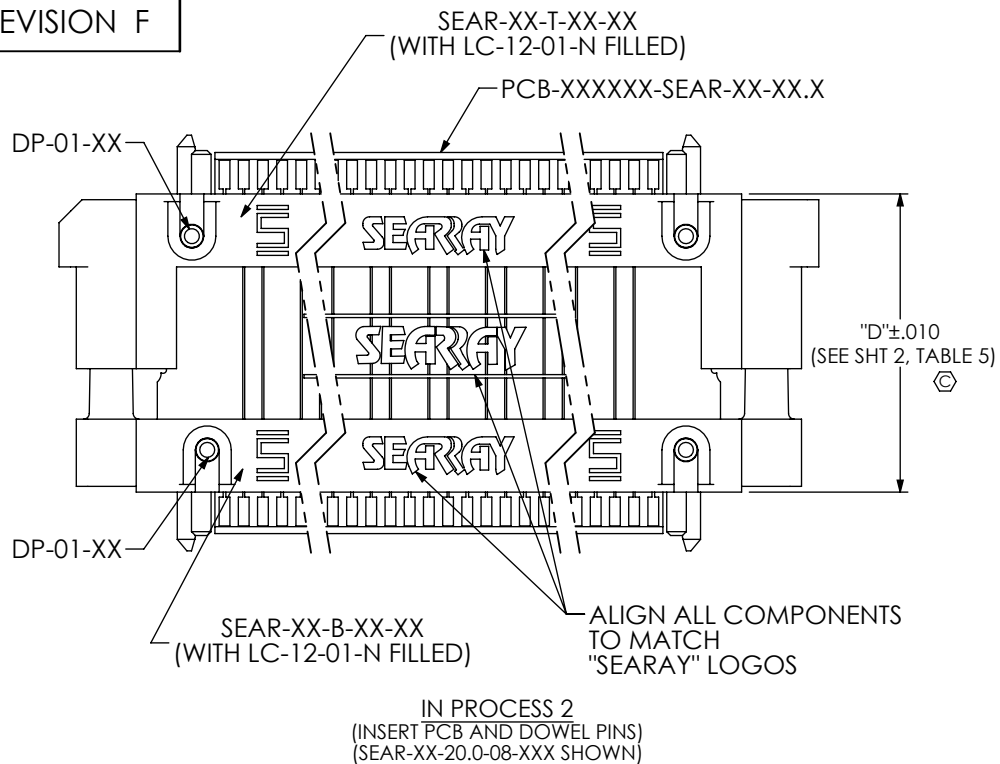
samtec

520 PARK EAST BLVD, NEW ALBANY, IN 47150
PHONE: 812-944-6733 FAX: 812-948-5047
e-Mail info@SAMTEC.com code 55322

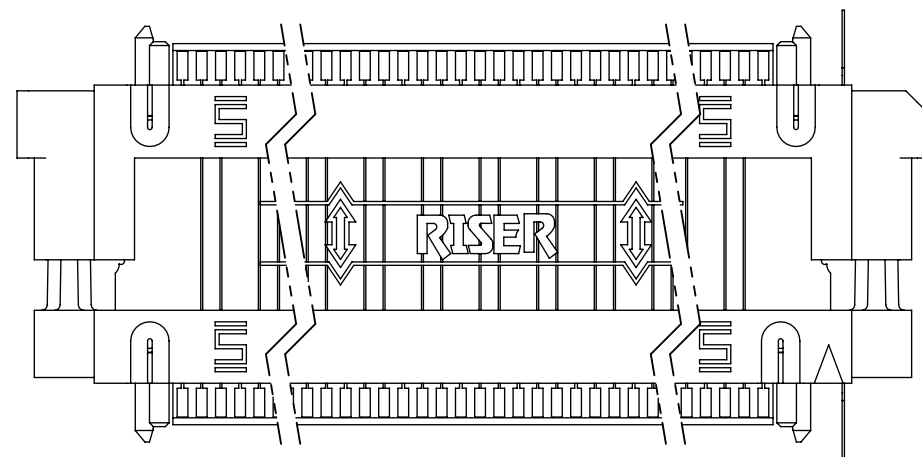
DESCRIPTION:
SEAR RISER ASSEMBLY

DWG. NO.
SEAR-XX-XX.X-XX-XXXX

BY: R MUSSER 05/06/2010 SHEET 3 OF 6



FINAL ASSEMBLY
(HEAT STAKE DOWEL PINS)
(SEAR-XX-20.0-08-XXX SHOWN)
(SEE NOTE 5)



FINAL ASSEMBLY (BACK VIEW)

PROPRIETARY NOTE

THIS DOCUMENT CONTAINS INFORMATION
CONFIDENTIAL AND PROPRIETARY TO
SAMTEC, INC. AND SHALL NOT BE REPRODUCED
OR TRANSFERRED TO OTHER DOCUMENTS OR
DISCLOSED TO OTHERS OR USED FOR ANY
PURPOSE OTHER THAN THAT WHICH IT WAS
OBTAINED WITHOUT THE EXPRESSED WRITTEN
CONSENT OF SAMTEC, INC.

DO NOT SCALE DRAWING

SHEET SCALE: 2:1

samtec

520 PARK EAST BLVD, NEW ALBANY, IN 47150
PHONE: 812-944-6733 FAX: 812-948-5047
e-Mail: info@SAMTEC.com code 55322

DESCRIPTION:

SEAR RISER ASSEMBLY

DWG. NO.

SEAR-XX-XX.X-XX-XXXX

BY: R MUSSER 05/06/2010

SHEET 4 OF 6

| SEAR-40-XX.X-06-XXXX SIGNAL MAPPING FOR -085 OHMS | | | | | | |
|---|-----|-----|-----|-----|-----|-----|
| END 1 | 1 | 2 | 3 | 4 | 5 | 6 |
| | GND | SIG | SIG | GND | SIG | SIG |
| END 2 | 10 | 20 | 30 | 40 | 50 | 60 |
| End 1 | 7 | 8 | 9 | 10 | 11 | 12 |
| | GND | SIG | SIG | GND | SIG | SIG |
| End 2 | 9 | 19 | 29 | 39 | 49 | 59 |
| End 1 | 13 | 14 | 15 | 16 | 17 | 18 |
| | GND | SIG | SIG | GND | SIG | SIG |
| End 2 | 8 | 18 | 28 | 38 | 48 | 58 |
| END 1 | ... | ... | ... | ... | ... | ... |
| | GND | SIG | SIG | GND | SIG | SIG |
| END 2 | ... | ... | ... | ... | ... | ... |
| END 1 | ... | ... | ... | ... | ... | ... |
| | GND | SIG | SIG | GND | SIG | SIG |
| END 2 | ... | ... | ... | ... | ... | ... |
| END 1 | 223 | 224 | 225 | 226 | 227 | 228 |
| | GND | SIG | SIG | GND | SIG | SIG |
| END 2 | 3 | 13 | 23 | 33 | 43 | 53 |
| END 1 | 229 | 230 | 231 | 232 | 233 | 234 |
| | GND | SIG | SIG | GND | SIG | SIG |
| END 2 | 2 | 12 | 22 | 32 | 42 | 52 |
| END 1 | 235 | 236 | 237 | 238 | 239 | 240 |
| | GND | SIG | SIG | GND | SIG | SIG |
| END 2 | 1 | 11 | 21 | 31 | 41 | 51 |

| SEAR-40-XX.X-08-XXXX SIGNAL MAPPING FOR -085 OHMS | | | | | | | | |
|---|-----|-----|-----|-----|-----|-----|-----|-----|
| END 1 | 1 | 2 | 3 | 4 | 5 | 6 | 7 | 8 |
| | GND | SIG | SIG | GND | SIG | SIG | GND | SIG |
| END 2 | 10 | 20 | 30 | 40 | 50 | 60 | 70 | 80 |
| END 1 | 9 | 10 | 11 | 12 | 13 | 14 | 15 | 16 |
| | SIG | GND | SIG | SIG | GND | SIG | SIG | GND |
| END 2 | 9 | 19 | 29 | 39 | 49 | 59 | 69 | 79 |
| END 1 | 17 | 18 | 19 | 20 | 21 | 22 | 23 | 24 |
| | SIG | SIG | GND | SIG | SIG | GND | SIG | SIG |
| END 2 | 8 | 18 | 28 | 38 | 48 | 58 | 68 | 78 |
| END 1 | ... | ... | ... | ... | ... | ... | ... | ... |
| | GND | SIG | SIG | GND | SIG | SIG | GND | SIG |
| END 2 | ... | ... | ... | ... | ... | ... | ... | ... |
| END 1 | ... | ... | ... | ... | ... | ... | ... | ... |
| | SIG | GND | SIG | SIG | GND | SIG | SIG | GND |
| END 2 | ... | ... | ... | ... | ... | ... | ... | ... |
| END1 | 297 | 298 | 299 | 300 | 301 | 302 | 303 | 304 |
| | SIG | SIG | GND | SIG | SIG | GND | SIG | SIG |
| END 2 | 243 | 253 | 263 | 273 | 283 | 293 | 303 | 313 |
| END 1 | 305 | 306 | 307 | 308 | 309 | 310 | 311 | 312 |
| | GND | SIG | SIG | GND | SIG | SIG | GND | SIG |
| END 2 | 242 | 252 | 262 | 272 | 282 | 292 | 302 | 312 |
| END 1 | 313 | 314 | 315 | 316 | 317 | 318 | 319 | 320 |
| | SIG | GND | SIG | SIG | GND | SIG | SIG | GND |
| END 2 | 241 | 251 | 261 | 271 | 281 | 291 | 301 | 311 |

| SEAR-40-XX.X-10-XXXX SIGNAL MAPPING FOR -085 OHMS | | | | | | | | | | |
|---|-----|-----|-----|-----|------|-----|-----|-----|-----|-----|
| END 1 | 1 | 2 | 3 | 4 | 5 | 6 | 7 | 8 | 9 | 10 |
| | GND | SIG | SIG | GND | SIG | SIG | GND | SIG | SIG | GND |
| END 2 | 10 | 20 | 30 | 40 | 50 | 60 | 70 | 80 | 90 | 100 |
| END 1 | 11 | 12 | 13 | 14 | 15 | 16 | 17 | 18 | 19 | 20 |
| | SIG | SIG | GND | SIG | SIG | GND | SIG | SIG | GND | SIG |
| END 2 | 9 | 19 | 29 | 39 | 49 | 59 | 69 | 79 | 89 | 99 |
| END 1 | 21 | 22 | 23 | 24 | 25 | 26 | 27 | 28 | 29 | 30 |
| | SIG | GND | SIG | SIG | GND | SIG | SIG | GND | SIG | SIG |
| END 2 | 8 | 18 | 28 | 38 | 48 | 58 | 68 | 78 | 88 | 98 |
| END 1 | ... | ... | ... | ... | ... | ... | ... | ... | ... | ... |
| | GND | SIG | SIG | GND | SIG | SIG | GND | SIG | SIG | GND |
| END 2 | ... | ... | ... | ... | ... | ... | ... | ... | ... | ... |
| END 1 | ... | ... | ... | ... | ... | ... | ... | ... | ... | ... |
| | GND | SIG | SIG | GND | SIG | SIG | GND | SIG | SIG | GND |
| END 2 | ... | ... | ... | ... | ... | ... | ... | ... | ... | ... |
| END 1 | 371 | 372 | 373 | 374 | 375 | 376 | 377 | 378 | 379 | 380 |
| | SIG | SIG | GND | SIG | SIG | GND | SIG | SIG | GND | SIG |
| END 2 | 303 | 313 | 323 | 333 | 343 | 353 | 363 | 373 | 383 | 393 |
| END 1 | 381 | 382 | 383 | 384 | 385 | 386 | 387 | 388 | 389 | 390 |
| | SIG | GND | SIG | SIG | GND | SIG | SIG | GND | SIG | SIG |
| END 2 | 302 | 312 | 322 | 332 | 342 | 352 | 362 | 372 | 382 | 392 |
| END 1 | 391 | 392 | 393 | 394 | 395 | 396 | 397 | 398 | 399 | 400 |
| | GND | SIG | SIG | GND | SSIG | SIG | GND | SIG | SIG | GND |
| END 2 | 301 | 311 | 321 | 331 | 341 | 351 | 361 | 371 | 381 | 391 |

PROPRIETARY NOTE
THIS DOCUMENT CONTAINS INFORMATION
CONFIDENTIAL AND PROPRIETARY TO
SAMTEC, INC. AND SHALL NOT BE REPRODUCED
OR TRANSFERRED TO OTHER DOCUMENTS OR
DISCLOSED TO OTHERS OR USED FOR ANY
PURPOSE OTHER THAN THAT WHICH IT WAS
OBTAINED WITHOUT THE EXPRESSED WRITTEN
CONSENT OF SAMTEC, INC.

DO NOT SCALE DRAWING

SHEET SCALE: 2:1



520 PARK EAST BLVD, NEW ALBANY, IN 47150
PHONE: 812-944-6733 FAX: 812-948-5047
e-Mail info@SAMTEC.com code 55322

DESCRIPTION:
SEAR RISER ASSEMBLY

DWG. NO.
SEAR-XX-XX.X-XX-XXXX

BY: R MUSSER 05/06/2010 SHEET 5 OF 6

REVISION F

| SEAR-50-XX.X-06-XXXX SIGNAL MAPPING FOR -085 OHMS | | | | | | |
|---|-----|-----|-----|-----|-----|-----|
| END 1 | 1 | 2 | 3 | 4 | 5 | 6 |
| | GND | SIG | SIG | GND | SIG | SIG |
| END 2 | 10 | 20 | 30 | 40 | 50 | 60 |
| END 1 | 7 | 8 | 9 | 10 | 11 | 12 |
| | GND | SIG | SIG | GND | SIG | SIG |
| END 2 | 9 | 19 | 29 | 39 | 49 | 59 |
| END 1 | 13 | 14 | 15 | 16 | 17 | 18 |
| | GND | SIG | SIG | GND | SIG | SIG |
| END 2 | 8 | 18 | 28 | 38 | 48 | 58 |
| END 1 | ... | ... | ... | ... | ... | ... |
| | GND | SIG | SIG | GND | SIG | SIG |
| END 2 | ... | ... | ... | ... | ... | ... |
| END 1 | ... | ... | ... | ... | ... | ... |
| | GND | SIG | SIG | GND | SIG | SIG |
| END 2 | ... | ... | ... | ... | ... | ... |
| END 1 | 283 | 284 | 285 | 286 | 287 | 288 |
| | GND | SIG | SIG | GND | SIG | SIG |
| END 2 | 243 | 253 | 263 | 273 | 283 | 293 |
| END 1 | 289 | 290 | 291 | 292 | 293 | 294 |
| | GND | SIG | SIG | GND | SIG | SIG |
| END 2 | 242 | 252 | 262 | 272 | 282 | 292 |
| END 1 | 295 | 296 | 297 | 298 | 299 | 300 |
| | GND | SIG | SIG | GND | SIG | SIG |
| END 2 | 241 | 251 | 261 | 271 | 281 | 291 |

| SEAR-50-XX.X-08-XXXX SIGNAL MAPPING FOR -085 OHMS | | | | | | | | |
|---|-----|-----|-----|-----|-----|-----|-----|-----|
| END 1 | 1 | 2 | 3 | 4 | 5 | 6 | 7 | 8 |
| | GND | SIG | SIG | GND | SIG | SIG | GND | SIG |
| END 2 | 10 | 20 | 30 | 40 | 50 | 60 | 70 | 80 |
| END 1 | 9 | 10 | 11 | 12 | 13 | 14 | 15 | 16 |
| | SIG | GND | SIG | SIG | GND | SIG | SIG | GND |
| END 2 | 9 | 19 | 29 | 39 | 49 | 59 | 69 | 79 |
| END 1 | 17 | 18 | 19 | 20 | 21 | 22 | 23 | 24 |
| | SIG | SIG | GND | SIG | SIG | GND | SIG | SIG |
| END 2 | 8 | 18 | 28 | 38 | 48 | 58 | 68 | 78 |
| END 1 | ... | ... | ... | ... | ... | ... | ... | ... |
| | GND | SIG | SIG | GND | SIG | SIG | GND | SIG |
| END 2 | ... | ... | ... | ... | ... | ... | ... | ... |
| END 1 | ... | ... | ... | ... | ... | ... | ... | ... |
| | SIG | GND | SIG | SIG | GND | SIG | SIG | GND |
| END 2 | ... | ... | ... | ... | ... | ... | ... | ... |
| END 1 | 377 | 378 | 379 | 380 | 381 | 382 | 383 | 384 |
| | SIG | SIG | GND | SIG | SIG | GND | SIG | SIG |
| END 2 | 323 | 333 | 343 | 353 | 363 | 373 | 383 | 393 |
| END 1 | 385 | 386 | 387 | 388 | 389 | 390 | 391 | 392 |
| | GND | SIG | SIG | GND | SIG | SIG | GND | SIG |
| END 2 | 322 | 332 | 342 | 352 | 362 | 372 | 382 | 392 |
| END 1 | 393 | 394 | 395 | 396 | 397 | 398 | 399 | 400 |
| | SIG | GND | SIG | SIG | GND | SIG | SIG | GND |
| END 2 | 321 | 331 | 341 | 351 | 361 | 371 | 381 | 391 |

| SEAR-50-XX.X-10-XXXX SIGNAL MAPPING FOR -085 OHMS | | | | | | | | | | |
|---|-----|-----|-----|-----|-----|-----|-----|------|-----|-----|
| END 1 | 1 | 2 | 3 | 4 | 5 | 6 | 7 | 8 | 9 | 10 |
| | GND | SIG | SIG | GND | SIG | SIG | GND | SIG | SIG | GND |
| END 2 | 10 | 20 | 30 | 40 | 50 | 60 | 70 | 80 | 90 | 100 |
| END 1 | 11 | 12 | 13 | 14 | 15 | 16 | 17 | 18 | 19 | 20 |
| | SIG | SIG | GND | SIG | SIG | GND | SIG | SIG | GND | SIG |
| END 2 | 9 | 19 | 29 | 39 | 49 | 59 | 69 | 79 | 89 | 99 |
| END 1 | 21 | 22 | 23 | 24 | 25 | 26 | 27 | 28 | 29 | 30 |
| | SIG | GND | SIG | SIG | GND | SIG | SIG | GND | SIG | SIG |
| END 2 | 8 | 18 | 28 | 38 | 48 | 58 | 68 | 78 | 88 | 98 |
| END 1 | ... | ... | ... | ... | ... | ... | ... | ... | ... | ... |
| | GND | SIG | SIG | GND | SIG | SIG | GND | SIG | SIG | GND |
| END 2 | ... | ... | ... | ... | ... | ... | ... | ... | ... | ... |
| END 1 | ... | ... | ... | ... | ... | ... | ... | ... | ... | ... |
| | GND | SIG | SIG | GND | SIG | SIG | GND | SIG | SIG | GND |
| END 2 | ... | ... | ... | ... | ... | ... | ... | ... | ... | ... |
| END 1 | 471 | 472 | 473 | 474 | 475 | 476 | 477 | 478 | 479 | 480 |
| | SIG | SIG | GND | SIG | SIG | GND | SIG | SIG | GND | SIG |
| END 2 | 403 | 413 | 423 | 433 | 443 | 453 | 463 | 473 | 483 | 493 |
| END 1 | 481 | 482 | 483 | 484 | 485 | 486 | 487 | 488 | 489 | 490 |
| | SIG | GND | SIG | SIG | GND | SIG | SIG | GND | SIG | SIG |
| END 2 | 402 | 412 | 422 | 432 | 442 | 452 | 462 | 472 | 482 | 492 |
| END 1 | 491 | 492 | 493 | 494 | 495 | 496 | 497 | 4998 | 499 | 500 |
| | GND | SIG | SIG | GND | SIG | SIG | GND | SIG | SIG | GND |
| END 2 | 401 | 411 | 421 | 431 | 441 | 451 | 461 | 471 | 481 | 491 |

PROPRIETARY NOTE
THIS DOCUMENT CONTAINS INFORMATION
CONFIDENTIAL AND PROPRIETARY TO
SAMTEC, INC. AND SHALL NOT BE REPRODUCED
OR TRANSFERRED TO OTHER DOCUMENTS OR
DISCLOSED TO OTHERS OR USED FOR ANY
PURPOSE OTHER THAN THAT WHICH IT WAS
OBTAINED WITHOUT THE EXPRESSED WRITTEN
CONSENT OF SAMTEC, INC.

DO NOT SCALE DRAWING

SHEET SCALE: 2:1



520 PARK EAST BLVD, NEW ALBANY, IN 47150
PHONE: 812-944-6733 FAX: 812-948-5047
e-Mail info@SAMTEC.com code 55322

| | |
|-------------------------|----------------------|
| DESCRIPTION: | SEAR RISER ASSEMBLY |
| DWG. NO. | SEAR-XX-XX.X-XX-XXXX |
| BY: R MUSSER 05/06/2010 | SHEET 6 OF 6 |

Mouser Electronics

Authorized Distributor

Click to View Pricing, Inventory, Delivery & Lifecycle Information:

[Samtec:](#)

[SEAR-20-20.0-10-085](#)