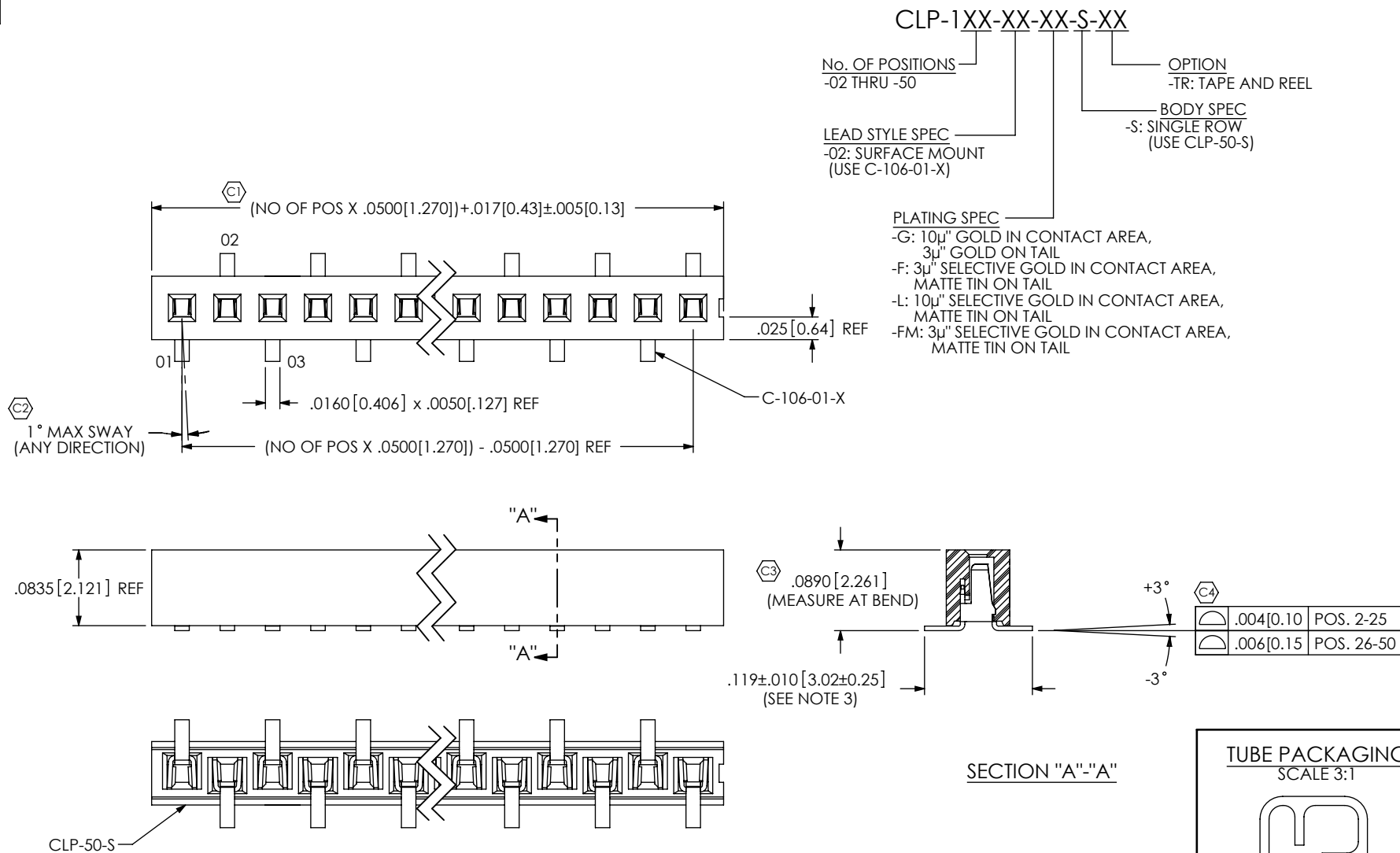


DO NOT
SCALE FROM
THIS PRINT



TUBE PACKAGING
SCALE 3:1

TUBE: PT-1-24-02-65
PLUG: TP-30

- NOTES:
1. C PRESENTS A CRITICAL DIMENSION FOR STATISTICAL PROCESS CONTROL.
 2. MINIMUM PUSHOUT FORCE: .5 LB.
 3. SHEAR TAILS TO DIMENSIONS SHOWN.
 4. PARTS TO BE SYMMETRICAL ABOUT C.
 5. WILL LOSE ONE POSITION PER CUT TO OBTAIN ODD POSITION PARTS.
WILL LOSE TWO POSITIONS PER CUT TO OBTAIN EVEN POSITION PARTS.
 6. TUBE PACKAGE POSITIONS 5 THROUGH 50 ONLY. POSITIONS 2 THRU4
ARE TO BE LAYER PACKAGED.
 7. .002[0.05] MAX BURR.
 8. CUT FLASH TO BE .010[0.25] MAX WITH NO FLASH ALLOWED IN HOLES
OR EXTENDING BELOW LEADS.

UNLESS OTHERWISE SPECIFIED, DIMENSIONS ARE IN INCHES. TOLERANCES ARE: DECIMALS ANGLES .XX: ±.01 [.3] 2° .XXX: ±.005 [.13] .XXXX: ±.0020 [.051]		PROPRIETARY NOTE THIS DOCUMENT CONTAINS INFORMATION CONFIDENTIAL AND PROPRIETARY TO SAMTEC, INC. AND SHALL NOT BE REPRODUCED OR TRANSFERRED TO OTHER DOCUMENTS OR DISCLOSED TO OTHERS OR USED FOR ANY PURPOSE OTHER THAN THAT WHICH IT WAS OBTAINED WITHOUT THE EXPRESSED WRITTEN CONSENT OF SAMTEC, INC.	
MATERIAL:	DO NOT SCALE DRAWING	SHEET SCALE: 6:1	DESCRIPTION: LOW PROFILE .050 C.L. SINGLE ROW ASM.
INSULATOR: LCP, UL 94 VO, COLOR: BLACK CONTACT: PHOS BRONZE			DWG. NO. CLP-1XX-XX-XX-S-XX

samtec

520 PARK EAST BLVD., NEW ALBANY, IN 47150
PHONE: 812-944-6733 FAX: 812-948-5047
e-Mail: info@SAMTEC.com code 55322

BY: BRATCHER 06/07/1995 SHEET 1 OF 1

Mouser Electronics

Authorized Distributor

Click to View Pricing, Inventory, Delivery & Lifecycle Information:

[Samtec:](#)

[CLP-102-02-F-S-TR](#) [CLP-106-02-L-S-TR](#)