

No OF POS	T/B BOW	S/S BOW
-02 THRU -09	.002	.002
-10 THRU -12	.004	.002
-13 THRU -15	.0075	.002

IPBD-XX-D-X

OPTION

-R: RETENTION LATCH  
(SEE SHEET 3, FIG 3)  
(SEE NOTE 16)

-K: KEYED POLARIZATION  
(SEE FIG. 5 & 6,  
SHEET 4)

— ROW SPECIFICATION

-D: DOUBLE

NOTES:


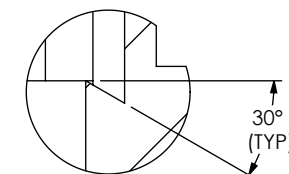
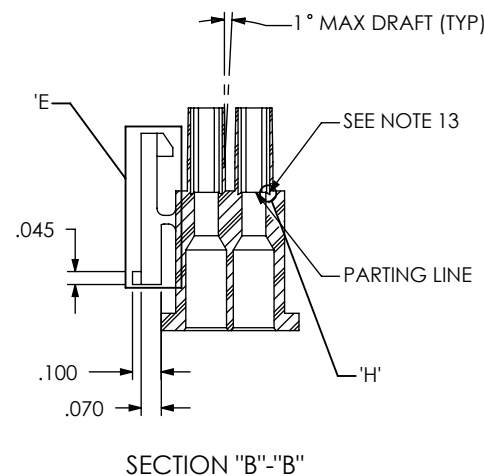
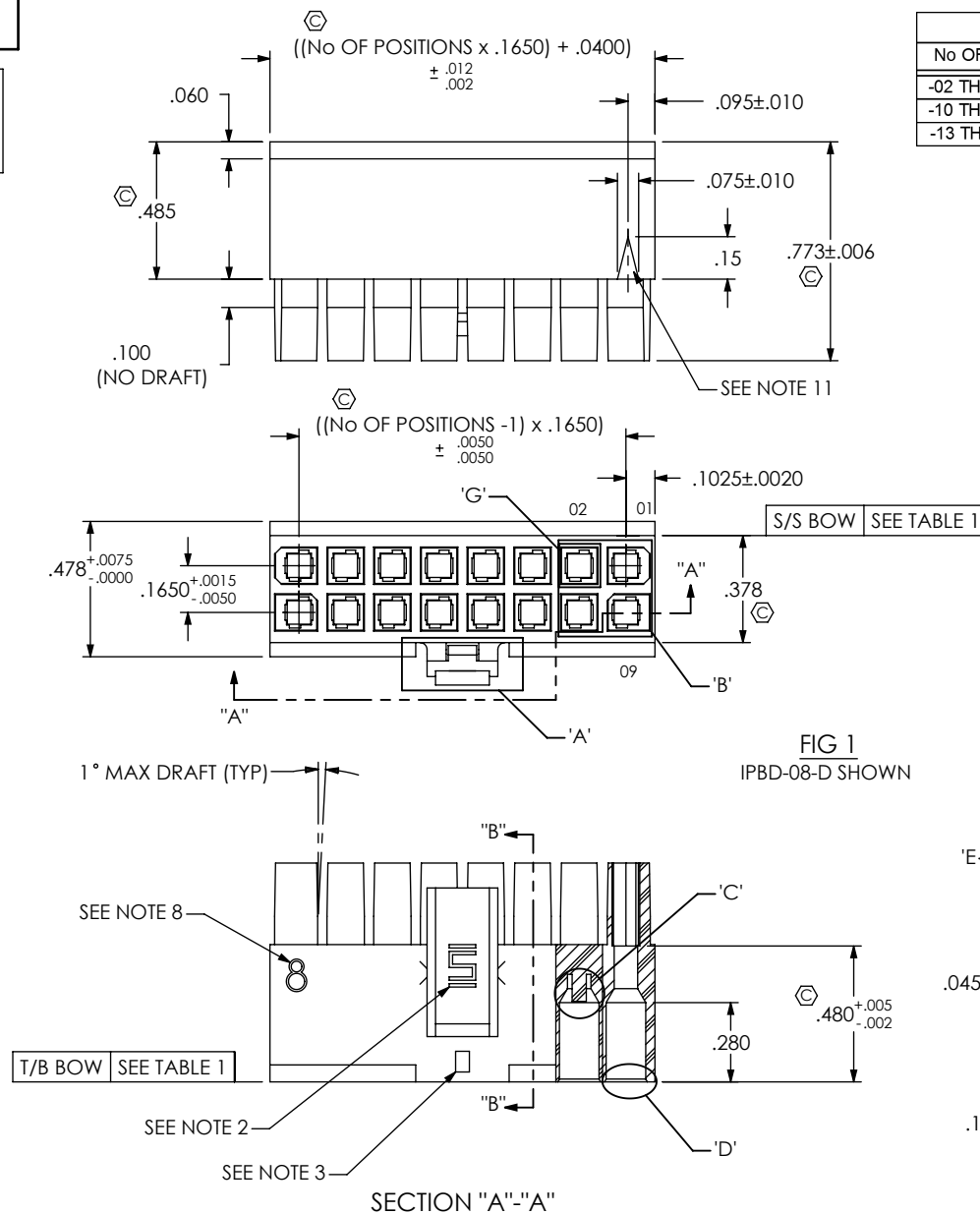
1.  REPRESENTS A CRITICAL DIMENSION.
2. SAMTEC LOGO SHALL APPEAR AT ONE LOCATION ON SURFACE SHOWN, APPROXIMATELY .15 x .09 (BOTH SIDES).
3. ALL MULTIPLE CAVITY MOLDS SHALL IDENTIFY EACH CAVITY WITH TOOL DEPENDANT CAVITY ID AT THE DISCRETION OF SAMTEC ENGINEERING.
4. ALL IDENTIFICATION MARKS MUST NOT STAND GREATER THAN .002 OFF THE SURFACE OF THE PART.
5. MOLDED SURFACES SHALL BE CONSISTENT AND SMOOTH. SURFACES TO BE FREE OF SCATCHES, NICKS, SINK AREAS, VOIDS OR OTHER BLEMISHES.
6. MAX ALLOWABLE BOW: SEE TABLE 1.
7. PART TO BE SYMMETRIC ABOUT THE CENTERLINE WITHIN +/- .001, UNLESS OTHERWISE STATED.
8. NUMBER OF POSITIONS (PER ROW) TO BE SHOWN ON THIS SURFACE, SIZE AND DEPTH SIMILAR TO POSITION 1 INDICATOR.
9. GATE PAD MUST BE RECESSED .005. GATE LOCATION IS AT THE MOLDERS DISCRETION.
10. END CORES ARE POLARIZED. CONFIRM GEOMETRY RELATIVE TO POSITION 1 INDICATOR & GATE PAD.
11. POSITION 1 INDICATOR TO BE .0005 MAX DEPTH.
12. EACH POSITION TO BE IDENTIFIED WHERE SHOWN.
13. .0005 MAX MISMATCH PERMISSIBLE (ALL FOUR SIDES).
14. LATCH MUST CYCLE 10 TIMES WITHOUT EVIDENCE OF CRACKING OR COMPROMISE OF FUNCTION.
15. CHECK THIS FEATURE WITH GO/NOGO GAUGE.
16. OPTION NOT FOR SALE, FOR RETENTION LATCH FEATURE, SEE IPBD-XX-D-ML PRINT.

FIG 1  
IPBD-08-D SHOWN



DETAIL 'H'  
SCALE 15:1

UNLESS OTHERWISE SPECIFIED,  
DIMENSIONS ARE IN INCHES.

TOLERANCES ARE:

DECIMALS	ANGLES
0.0001	0.0001
0.0002	0.0002
0.0003	0.0003
0.0004	0.0004
0.0005	0.0005
0.0006	0.0006
0.0007	0.0007
0.0008	0.0008
0.0009	0.0009
0.0010	0.0010
0.0011	0.0011
0.0012	0.0012
0.0013	0.0013
0.0014	0.0014
0.0015	0.0015
0.0016	0.0016
0.0017	0.0017
0.0018	0.0018
0.0019	0.0019
0.0020	0.0020
0.0021	0.0021
0.0022	0.0022
0.0023	0.0023
0.0024	0.0024
0.0025	0.0025
0.0026	0.0026
0.0027	0.0027
0.0028	0.0028
0.0029	0.0029
0.0030	0.0030
0.0031	0.0031
0.0032	0.0032
0.0033	0.0033
0.0034	0.0034
0.0035	0.0035
0.0036	0.0036
0.0037	0.0037
0.0038	0.0038
0.0039	0.0039
0.0040	0.0040
0.0041	0.0041
0.0042	0.0042
0.0043	0.0043
0.0044	0.0044
0.0045	0.0045
0.0046	0.0046
0.0047	0.0047
0.0048	0.0048
0.0049	0.0049
0.0050	0.0050
0.0051	0.0051
0.0052	0.0052
0.0053	0.0053
0.0054	0.0054
0.0055	0.0055
0.0056	0.0056
0.0057	0.0057
0.0058	0.0058
0.0059	0.0059
0.0060	0.0060
0.0061	0.0061
0.0062	0.0062
0.0063	0.0063
0.0064	0.0064
0.0065	0.0065
0.0066	0.0066
0.0067	0.0067
0.0068	0.0068
0.0069	0.0069
0.0070	0.0070
0.0071	0.0071
0.0072	0.0072
0.0073	0.0073
0.0074	0.0074
0.0075	0.0075
0.0076	0.0076
0.0077	0.0077
0.0078	0.0078
0.0079	0.0079
0.0080	0.0080
0.0081	0.0081
0.0082	0.0082
0.0083	0.0083
0.0084	0.0084
0.0085	0.0085
0.0086	0.0086
0.0087	0.0087
0.0088	0.0088
0.0089	0.0089
0.0090	0.0090
0.0091	0.0091
0.0092	0.0092
0.0093	0.0093
0.0094	0.0094
0.0095	0.0095
0.0096	0.0096
0.0097	0.0097
0.0098	0.0098
0.0099	0.0099
0.0100	0.0100

XX + 01 [3]

.XXX:  $\pm .003$  [.08]  
.XXX:  $\pm .0015$  [.038]

---

PROPRIETARY NOTE

THIS DOCUMENT CONTAINS INFORMATION  
CONFIDENTIAL AND PROPRIETARY TO  
SAMTEC, INC. AND SHALL NOT BE REPRODUCED  
OR TRANSFERRED TO OTHER DOCUMENTS OR  
DISCLOSED TO OTHERS OR USED FOR ANY  
PURPOSE OTHER THAN THAT WHICH IT WAS  
OBTAINED WITHOUT THE EXPRESSED WRITTEN  
CONSENT OF SAMTEC, INC.

**MATERIAL:** DO NOT SCALE DRAWING

SHEET SCALE: 1.5:1

VALOX 457, COLOR NATURAL

MAY REGRIND: 0%

MAX REGRIND: 0%  
MAX FLASH ALLOWED: .003

MAX FLASH ALLOWED: .0

MAX GATE VESTIGE: .004

F:\DWG\MISC\MKTG\IPBD-XX-D-X-MKT.SLDDRW



520 PARK EAST BLVD, NEW ALBANY, IN 47150  
PHONE: 812-944-6733 FAX: 812-948-5047  
e-Mail [info@SAMTEC.com](mailto:info@SAMTEC.com) code 55322

	DESCRIPTION:
--	--------------

.165 SHROUDED CONTACT BODY

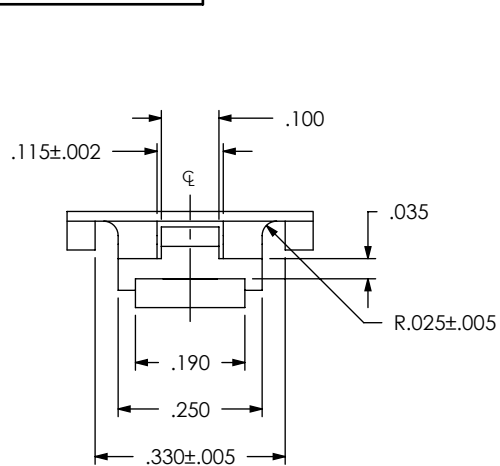
DWG. NO.

0. IPBD-XX-D-X

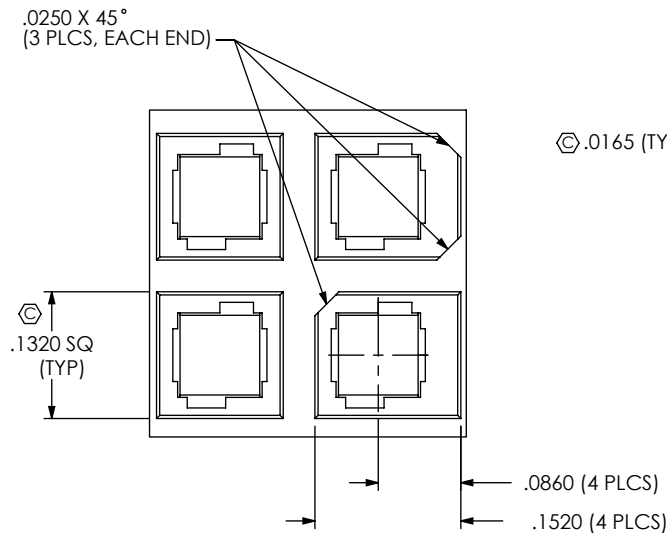
BY: DEAN P

10-24-2001

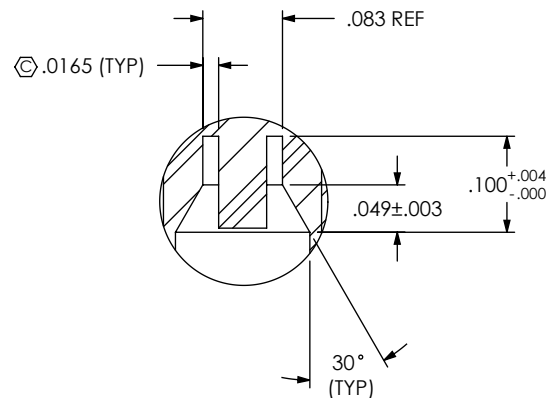
SHEET 1 OF 4



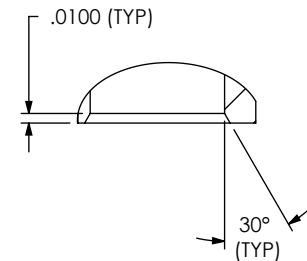
DETAIL 'A'  
SCALE 3:1



DETAIL 'B'  
SCALE 5:1

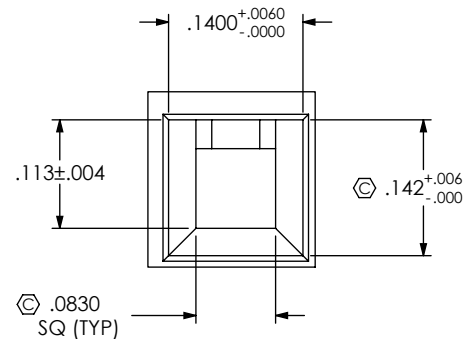
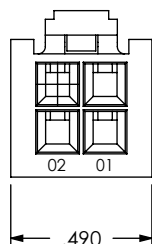
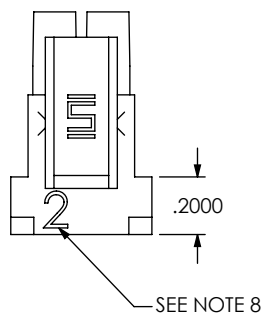


DETAIL 'C'  
SCALE 5:1

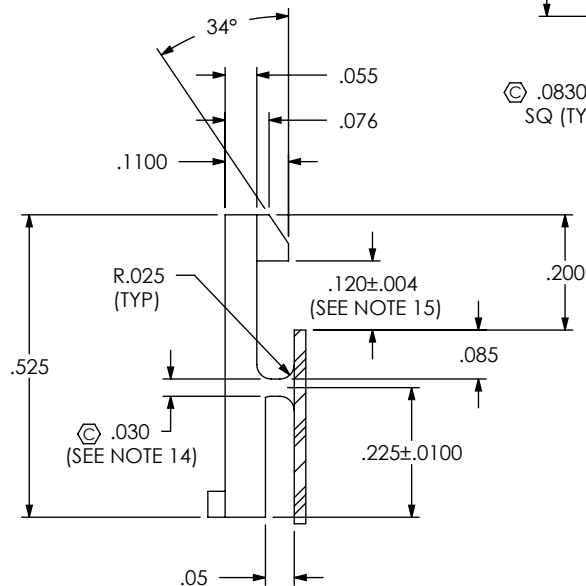


DETAIL 'D'  
SCALE 5:1

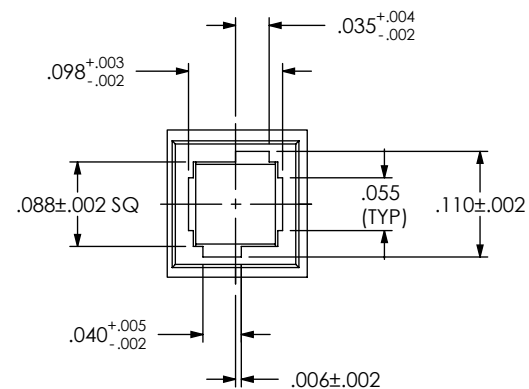
FIG 2  
-02 POSITION  
(SAME AS FIG 1, UNLESS OTHERWISE STATED)



DETAIL 'F'  
SCALE 5:1



DETAIL 'E'  
SCALE 3:1



DETAIL 'G'  
SCALE 5:1

PROPRIETARY NOTE

THIS DOCUMENT CONTAINS INFORMATION CONFIDENTIAL AND PROPRIETARY TO SAMTEC, INC. AND SHALL NOT BE REPRODUCED OR TRANSFERRED TO OTHER DOCUMENTS OR DISCLOSED TO OTHERS OR USED FOR ANY PURPOSE OTHER THAN THAT WHICH IT WAS OBTAINED WITHOUT THE EXPRESSED WRITTEN CONSENT OF SAMTEC, INC.

DO NOT SCALE DRAWING

SHEET SCALE: 1.5:1

**samtec**

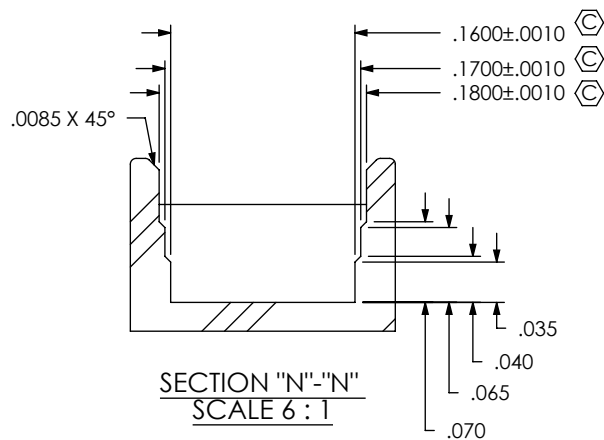
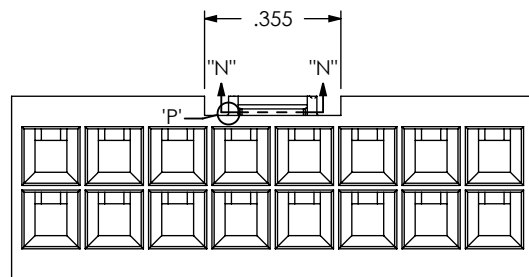
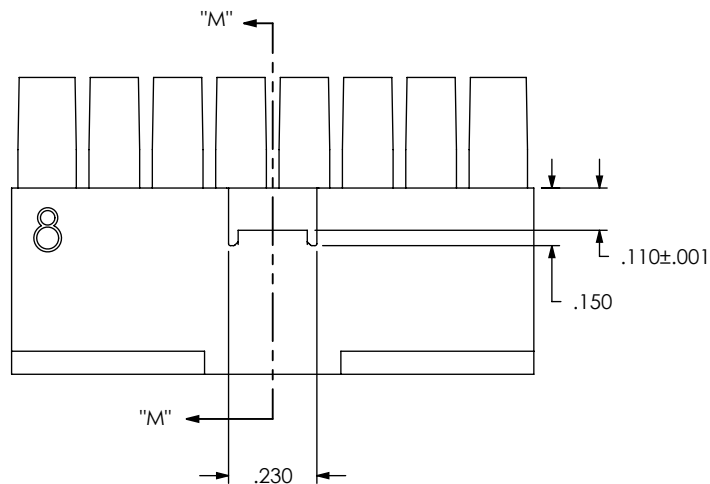
520 PARK EAST BLVD, NEW ALBANY, IN 47150  
PHONE: 812-944-6733 FAX: 812-948-5047  
e-Mail: info@SAMTEC.com code 55322

DESCRIPTION:  
.165 SHROUDED CONTACT BODY

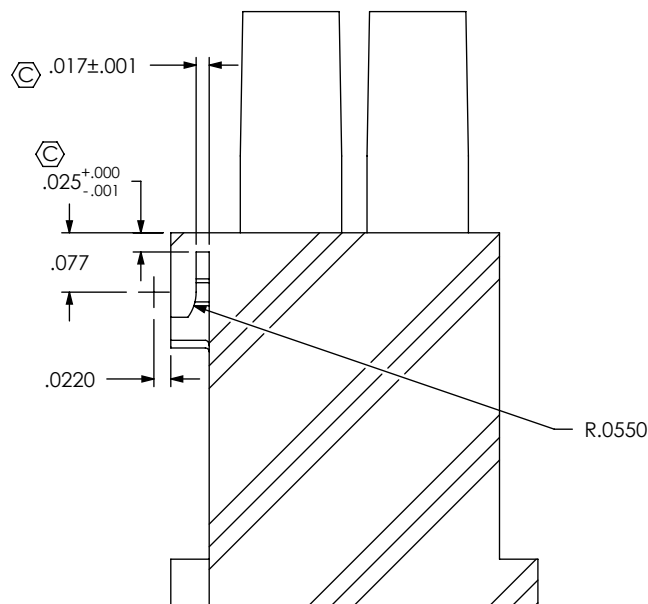
DWG. NO.  
IPBD-XX-D-X

BY: DEAN P 10-24-2001 SHEET 2 OF 4

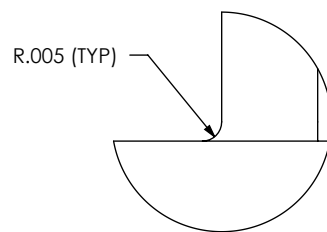
FIG 3  
(IPBD-08-D-R SHOWN)  
(SAME AS FIG 1, UNLESS OTHERWISE STATED)  
(SEE NOTE 16)



SECTION "N"-"N"  
SCALE 6 : 1

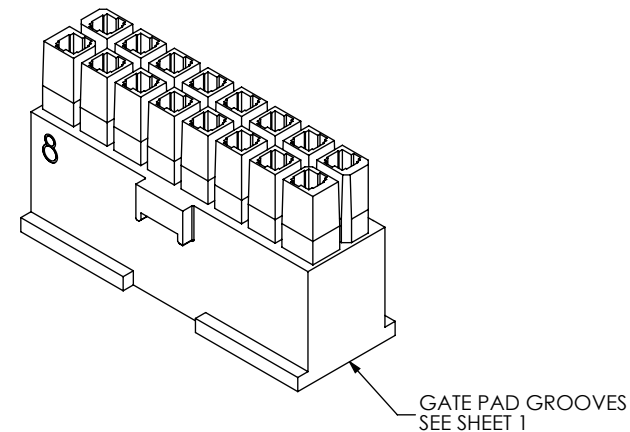
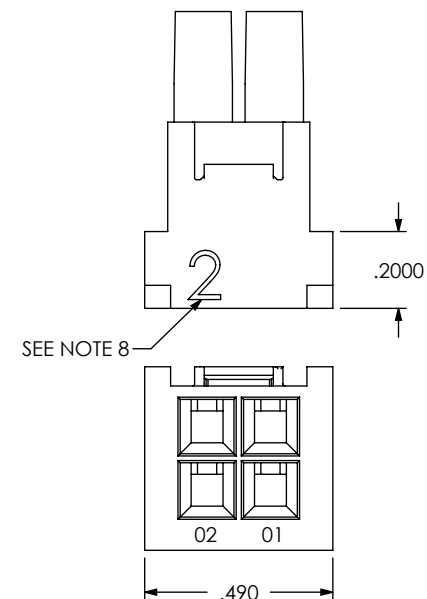


SECTION "M"-"M"  
SCALE 4 : 1



DETAIL 'P'  
SCALE 20 : 1

FIG 4  
(IPBD-02-D-R SHOWN)  
(SAME AS FIG 3, UNLESS OTHERWISE STATED)  
(SEE NOTE 16)



PROPRIETARY NOTE

THIS DOCUMENT CONTAINS INFORMATION  
CONFIDENTIAL AND PROPRIETARY TO  
SAMTEC, INC. AND SHALL NOT BE REPRODUCED  
OR TRANSFERRED TO OTHER DOCUMENTS OR  
DISCLOSED TO OTHERS OR USED FOR ANY  
PURPOSE OTHER THAN THAT WHICH IT WAS  
OBTAINED WITHOUT THE EXPRESSED WRITTEN  
CONSENT OF SAMTEC, INC.

DO NOT SCALE DRAWING

SHEET SCALE: 2:1

**samtec**

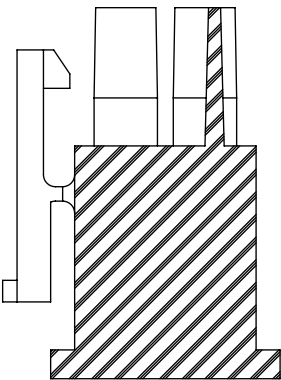
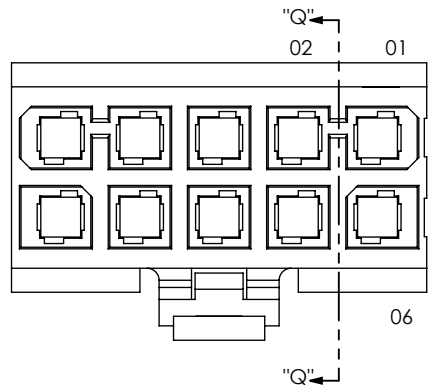
520 PARK EAST BLVD, NEW ALBANY, IN 47150  
PHONE: 812-944-6733 FAX: 812-948-5047  
e-Mail: info@SAMTEC.com code 55322

DESCRIPTION:  
.165 SHROUDED CONTACT BODY

DWG. NO.  
IPBD-XX-D-X

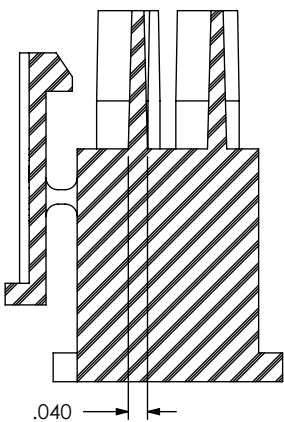
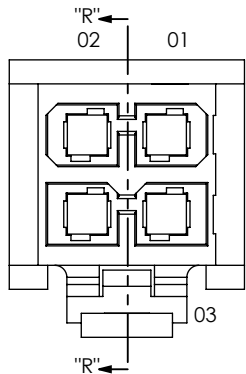
BY: DEAN P 10-24-2001 SHEET 3 OF 4

FIG 5  
(IPBD-05-D-K SHOWN)  
(SAME AS FIG 1, UNLESS OTHERWISE STATED)  
(TYPICAL FOR POSITIONS 3 THRU 15)




SECTION "Q"-"Q"  
SCALE 2.5 : 1

FIG 6  
(IPBD-02-D-K SHOWN)  
(SAME AS FIG 5, UNLESS OTHERWISE STATED)



SECTION "R"-"R"  
SCALE 2.5 : 1

<p>PROPRIETARY NOTE</p> <p>THIS DOCUMENT CONTAINS INFORMATION CONFIDENTIAL AND PROPRIETARY TO SAMTEC, INC. AND SHALL NOT BE REPRODUCED OR TRANSFERRED TO OTHER DOCUMENTS OR DISCLOSED TO OTHERS OR USED FOR ANY PURPOSE OTHER THAN THAT WHICH IT WAS OBTAINED WITHOUT THE EXPRESSED WRITTEN CONSENT OF SAMTEC, INC.</p> <p>DO NOT SCALE DRAWING</p> <p>SHEET SCALE: 2:1</p>		 <p>520 PARK EAST BLVD, NEW ALBANY, IN 47150 PHONE: 812-944-6733 FAX: 812-948-5047 e-Mail info@SAMTEC.com code 55322</p>	
		DESCRIPTION: .165 SHROUDED CONTACT BODY	
		DWG. NO. IPBD-XX-D-X	
BY: DEAN P		10-24-2001	SHEET 4 OF 4

# Mouser Electronics

Authorized Distributor

Click to View Pricing, Inventory, Delivery & Lifecycle Information:

[Samtec:](#)

[IPBD-09-D-K](#)