

NOTES:

1. C REPRESENTS A CRITICAL DIMENSION.
2. MINIMUM PUSHOUT FORCE: .5 LB.
3. COPLANARITY: .004[0.10] = POS 05 THRU 26
.006[0.15] = POS 27 THRU 50
4. TUBE ALL POSITIONS. PARTS TO BE TUBED WITH NOTCH GOING WITH ARROW.
5. PINS CAN BE ORIENTED IN ANY DIRECTION; BOTH ROWS MUST FACE SAME WAY.
6. SEE NOTCH FOR PROPER ORIENTATION.
7. MAXIMUM PIN HEIGHT VARIATION: .003[0.08].
8. DUE TO HIGH AMOUNT OF INSERTION FORCE NEEDED, THE -LC OPTION IS NOT COMPATIBLE WITH AUTO PLACEMENT. SAMTEC RECOMMENDS MANUAL PLACEMENT FOR ALL ASSEMBLIES WITH THE -LC OPTION.

DO NOT
SCALE FROM
THIS PRINT

SFC-1XX-XX-XX-D-XX

NO OF POSITIONS
ALL POSITIONS AVAILABLE
-02 THRU -50

OPTIONS

- (LEAVE BLANK FOR STANDARD AND USE SFM-XX-D)
- A: ALIGNMENT PIN (USE SFM-XX-D-A) (SEE FIG 4, SHT 2)
 - LC: LOCKING CLIP (SEE FIG 6, SHT 3 & NOTE 8) (USE SFM-XX-D-LC)
 - TR: TAPE & REEL (SEE SHT 4)
 - K: POLYIMIDE FILM PAD (.005[0.13] THICKNESS) (SEE FIG 3, SHT 2) (USE K-DOT-.157-.250-.005)

BODY SPECIFICATION

-D: DOUBLE ROW

PLATING SPECIFICATION

- F: 3 μ " FLASH SELECTIVE GOLD IN CONTACT AREA, MATTE TIN ON TAIL
- L: 10 μ " LIGHT SELECTIVE GOLD IN CONTACT AREA, MATTE TIN ON TAIL
- FM: 3 μ " FLASH SELECTIVE GOLD IN CONTACT AREA, MATTE TIN ON TAIL
- LM: 10 μ " LIGHT SELECTIVE GOLD IN CONTACT AREA, MATTE TIN ON TAIL

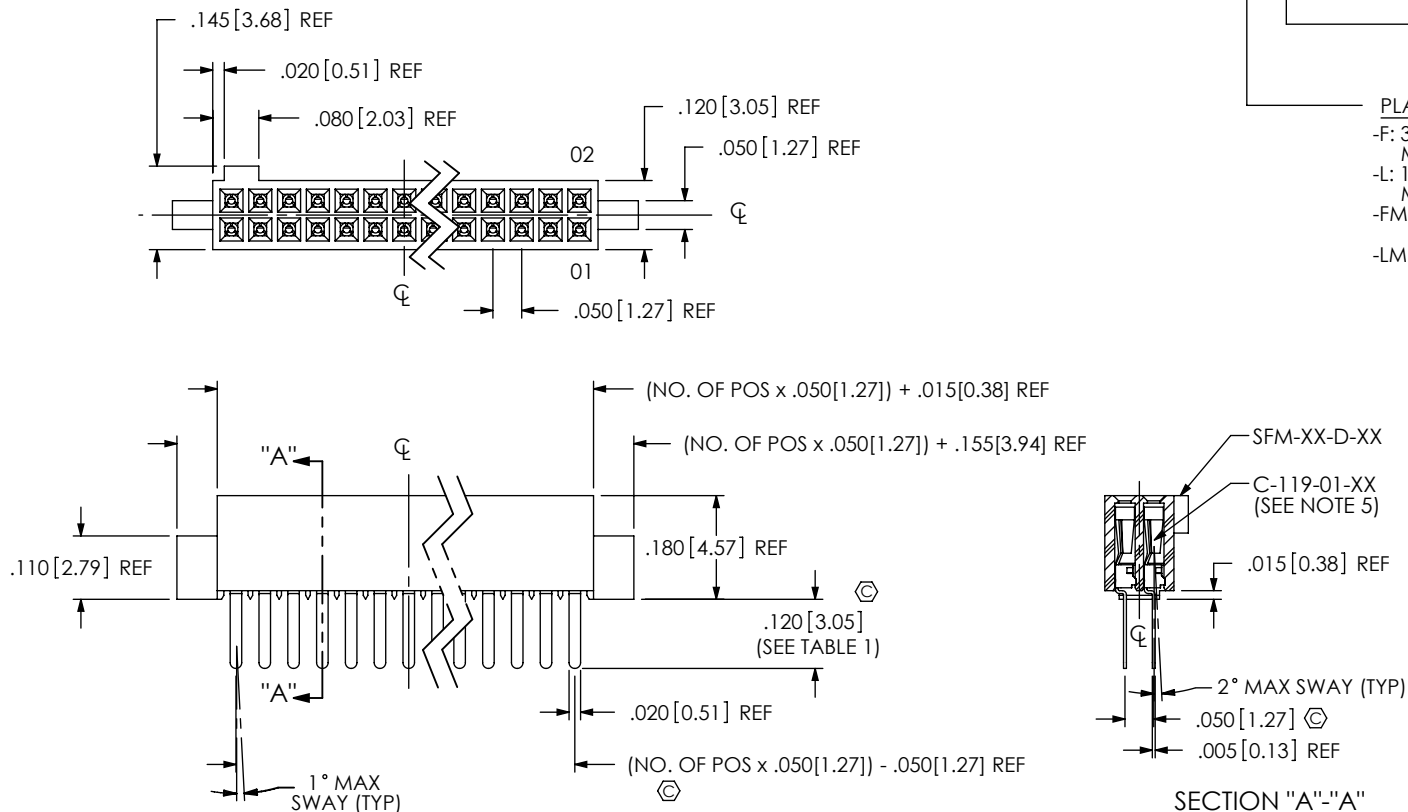


FIG 1
THROUGH HOLE/STRAIGHT MODIFIED

UNLESS OTHERWISE SPECIFIED,
DIMENSIONS ARE IN INCHES.
TOLERANCES ARE:
DECIMALS ANGLES
.XX: $\pm .01$ [.3] 2°
.XXX: $\pm .005$ [.13]
.XXXX: $\pm .0020$ [.051]

PROPRIETARY NOTE
THIS DOCUMENT CONTAINS INFORMATION
CONFIDENTIAL AND PROPRIETARY TO
SAMTEC, INC. AND SHALL NOT BE REPRODUCED
OR TRANSFERRED TO OTHER DOCUMENTS OR
DISCLOSED TO OTHERS OR USED FOR ANY
PURPOSE OTHER THAN THAT WHICH IT WAS
OBTAINED WITHOUT THE EXPRESSED WRITTEN
CONSENT OF SAMTEC, INC.

samtec

520 PARK EAST BLVD, NEW ALBANY, IN 47150
PHONE: 812-944-6733 FAX: 812-948-5047
e-Mail: info@SAMTEC.com code 55322

MATERIAL: DO NOT SCALE DRAWING
INSULATOR: LCP, COLOR: BLACK
CONTACT: PHOSPHOR BRONZE

SHEET SCALE: 3:1

DESCRIPTION:
.050 x .050 SOCKET STRIP DOUBLE ROW ASSEMBLY

DWG. NO.
SFC-1XX-XX-XX-D-XX

BY: BRATCHER 5/25/01

SHEET 1 OF 3

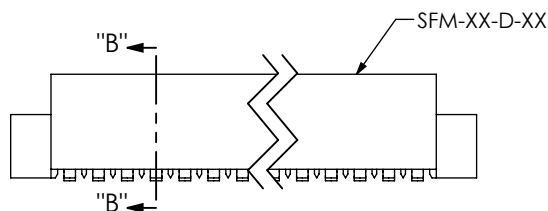
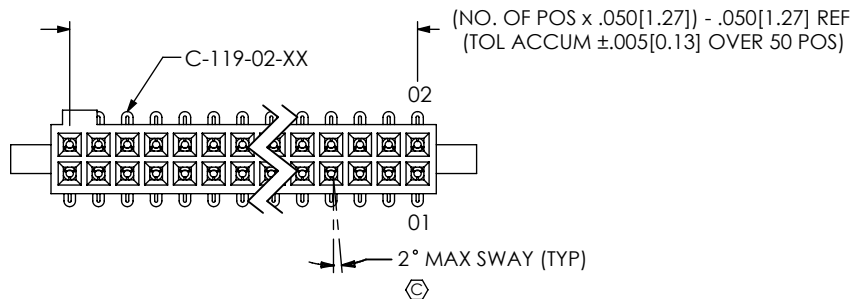
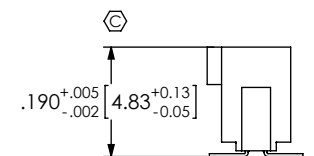
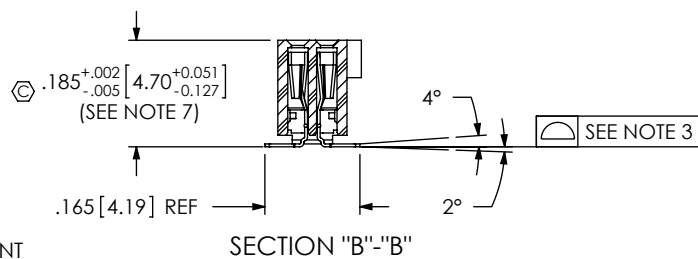


FIG 2
-T2: SURFACE MOUNT
(SAME AS FIG 1, DIFFERENT AS SHOWN)



IN-PROCESS
-T2

FOR HAND FILL ONLY
NOTE: DIMENSION APPLIES PRIOR
TO RE-PRESS, SEE SECTION "B-B"
FOR FINISHED DIMENSION

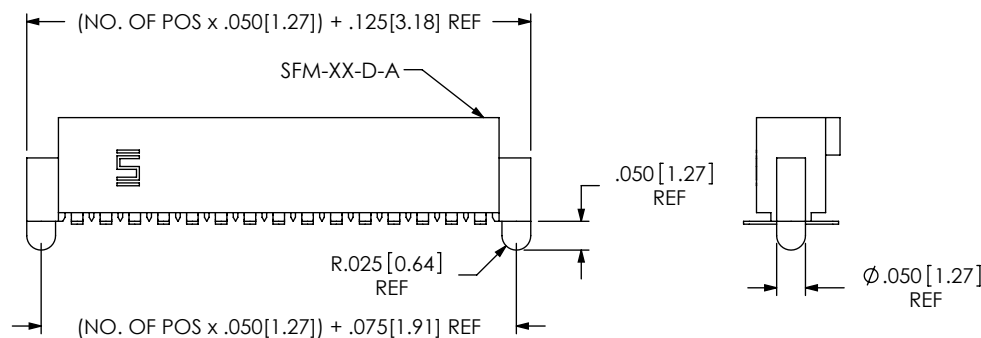


FIG 4
-A: ALIGNMENT PIN
(SAME AS FIG 2, DIFFERENT AS SHOWN)

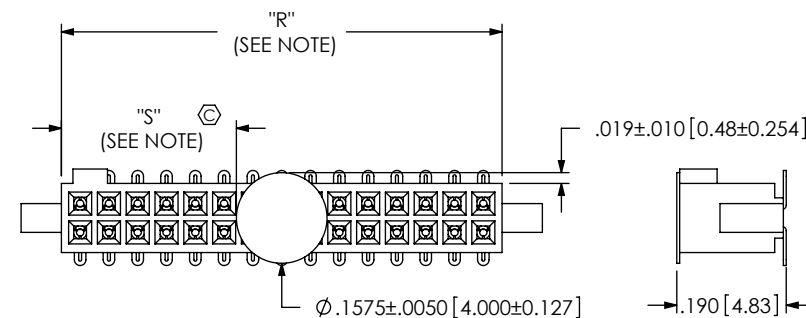


FIG 3
-K: POLYIMIDE FILM PAD
(SAME AS FIG 2, DIFFERENT AS SHOWN)
NOTE: "R" = USED MEASURED DIMENSION REF
"S" = {("R" - .1575[4.000])/2}±.020[0.51]

PROPRIETARY NOTE
THIS DOCUMENT CONTAINS INFORMATION
CONFIDENTIAL AND PROPRIETARY TO
SAMTEC, INC. AND SHALL NOT BE REPRODUCED
OR TRANSFERRED TO OTHER DOCUMENTS OR
DISCLOSED TO OTHERS OR USED FOR ANY
PURPOSE OTHER THAN THAT WHICH IT WAS
OBTAINED WITHOUT THE EXPRESSED WRITTEN
CONSENT OF SAMTEC, INC.

DO NOT SCALE DRAWING

SHEET SCALE: 3:1

samtec

520 PARK EAST BLVD, NEW ALBANY, IN 47150
PHONE: 812-944-6733 FAX: 812-948-5047
e-Mail: info@SAMTEC.com code 55322

DESCRIPTION:
.050 x .050 SOCKET STRIP DOUBLE ROW ASSEMBLY

DWG. NO.
SFC-1XX-XX-XX-D-XX

BY: BRATCHER 5/25/01

SHEET 2 OF 3

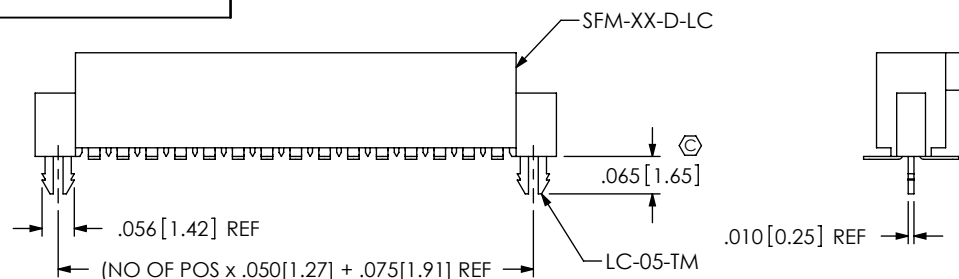
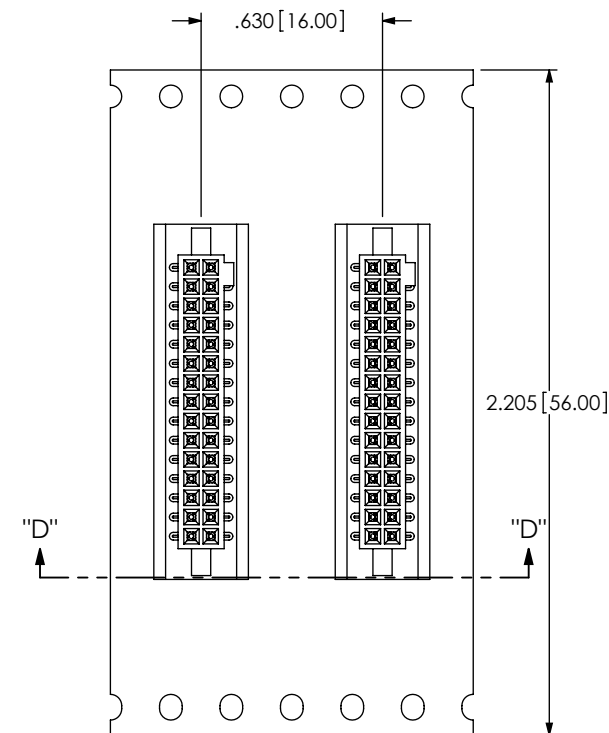
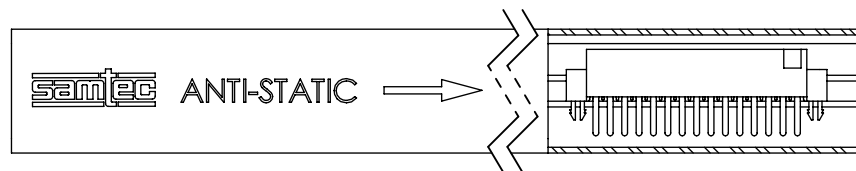
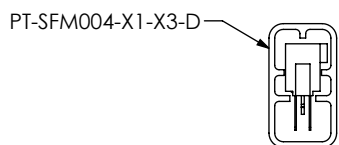
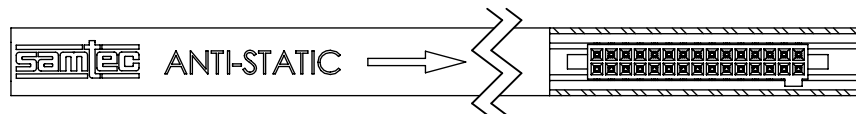
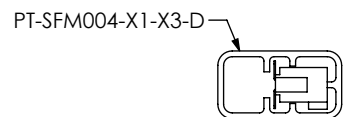
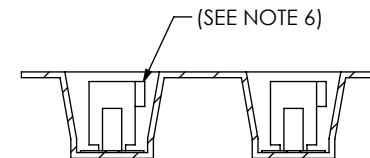


FIG 6
-LC: LOCKING CLIP
(SAME AS FIG 2, DIFFERENT AS SHOWN)



UNWINDING DIRECTION →



SECTION "D"-"D"
SCALE 2 : 1
PACKAGING VIEW
-TR: TAPE AND REEL

LEAD STYLE	PACKAGING TUBE	PLUG
-105-T2-X-D, -105-T2-X-D-LC, -105-T2-D-A, -105-T2-D-K-LC	PT-1-24-14-09	TP-24-02
-T1-D, -T1-D-LC, -T1-D-A, -T1-D-K	PT-SFM004-X1-X3-D	TP-24-02
-T2-D, -T2-D-K, -T2-D-LC, -T2-D-A, -T2-D-K-A, -T2-D-LC-K	PT-SFM004-X1-X3-D	TP-24-02

5 POS -T1 LEAD STYLE MAY BE TUBED USING
PT-1-24-15-09, TP-24-02

F:\DWG\MISC\MKTG\SFC-1XX-XX-XX-D-XX-MKT.SLDDRW

PROPRIETARY NOTE

THIS DOCUMENT CONTAINS INFORMATION
CONFIDENTIAL AND PROPRIETARY TO
SAMTEC, INC. AND SHALL NOT BE REPRODUCED
OR TRANSFERRED TO OTHER DOCUMENTS OR
DISCLOSED TO OTHERS OR USED FOR ANY
PURPOSE OTHER THAN THAT WHICH IT WAS
OBTAINED WITHOUT THE EXPRESSED WRITTEN
CONSENT OF SAMTEC, INC.

DO NOT SCALE DRAWING

SHEET SCALE: 3:1

samtec

520 PARK EAST BLVD, NEW ALBANY, IN 47150
PHONE: 812-944-6733 FAX: 812-948-5047
e-Mail: info@SAMTEC.com code 55322

DESCRIPTION:
.050 x .050 SOCKET STRIP DOUBLE ROW ASSEMBLY

DWG. NO.
SFC-1XX-XX-XX-D-XX

BY: BRATCHER 5/25/01

SHEET 3 OF 3

Mouser Electronics

Authorized Distributor

Click to View Pricing, Inventory, Delivery & Lifecycle Information:

[Samtec:](#)

[SFC-103-T2-L-D-A](#) [SFC-112-T1-F-D-A](#)