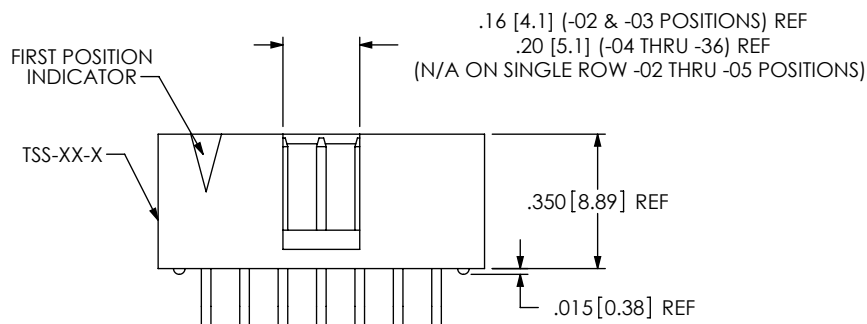
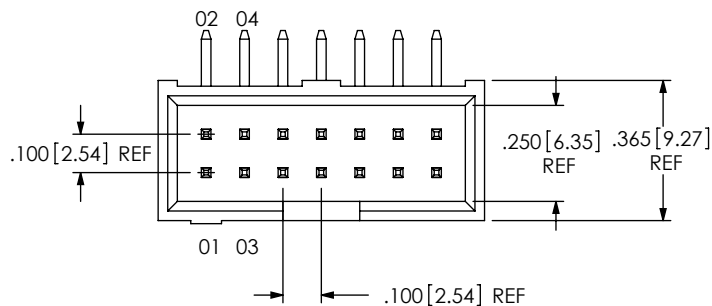
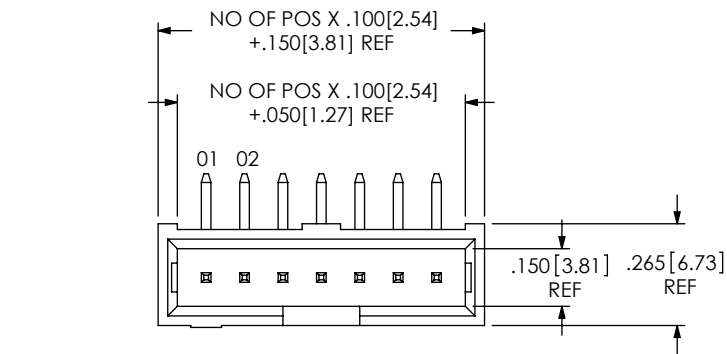


DO NOT
SCALE FROM
THIS PRINT



TSS-1XX-XX-XXX-X-XX-XX

NO OF POSITIONS
-02 THRU -18 &
20, 21, 24, 25, 28, 30, 32, 36
(PER ROW)

LEAD STYLE
SEE TABLE 1

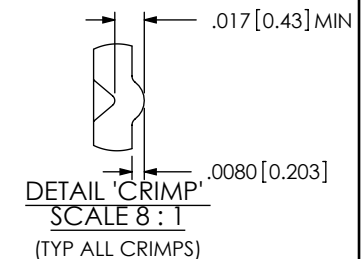
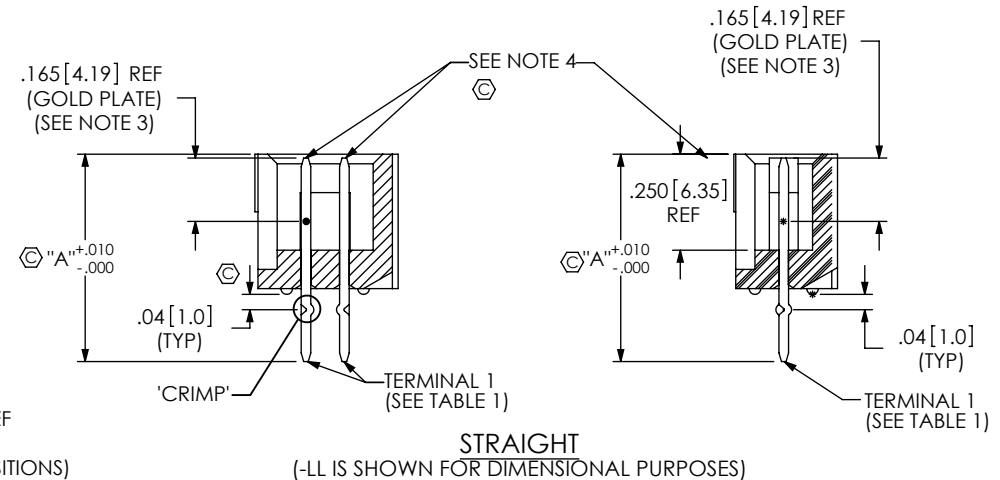
PLATING SPECIFICATION

-G: GOLD, 10μ" Au / 50μ" Ni NICKEL MIN ON CONTACT, 3μ" AU / 50μ" Ni MIN ON TAIL
-T: MATTE TIN CONTACT AND TAIL
-S: SELECTIVE, 30μ" Au / 50μ" Ni MIN ON CONTACT, MATTE TIN TAIL
-L: LIGHT SELECTIVE, 10μ" Au / 50μ" Ni MIN ON CONTACT, MATTE TIN TAIL
-H: HEAVY GOLD, 30μ" Au / 50μ" Ni MIN ON CONTACT, 3μ" Au / 50μ" Ni MIN ON TAIL
-F: FLASH SELECTIVE, 3μ" Au / 50μ" Ni MIN ON CONTACT, MATTE TIN TAIL
-STL: SELECTIVE, 30μ" Au / 50μ" Ni MIN ON CONTACT, TIN/LEAD (90/10+/-5%) TAIL (AVAILABLE IN -01 STYLE ONLY)
-SS: STRIPE SELECTIVE, 30μ" Au / 50μ" Ni MIN ON CONTACT, MATTE TIN TAIL (SEE NOTE 7)

POLARIZE OPTION
XX INDICATES POSITION OMITTED

OPTION
BLANK: STRAIGHT (STYLE 04 & 05 N/A)
-RA: RIGHT ANGLE (STYLE -01, -02 & -03 N/A)
-LL: LOCKING LEAD
-LA: -RA OPTION WITH -LL OPTION

ROW SPECIFICATION
-D: DOUBLE
-S: SINGLE



NOTES:

- ⊗ REPRESENTS A CRITICAL DIMENSION.
- MINIMUM PUSHOUT FORCE: 3 LB.
- ASSEMBLE GOLD PLATED END AS SHOWN.
- TERMINALS TO BE FLUSH TO .010 [.25] BELOW TOP OF SHROUD.
- TSS-1XX-04-X-D-RA-XX ASSEMBLIES ARE TO BE PACKAGED IN A PT-1-24-01-40 TUBE WITH TWO TP-13 PLUGS PER TUBE (ALL POSITIONS).
- ORIENTATE PINS TO REDUCE THE NUMBER OF BANDOLIER MARKS IN THE POST AREA (SEE TABLE 2).
- AVAILABLE ON STRAIGHT LEAD STYLES -01, -02, -03 AND ON -RA LEAD STYLE -04. MATES WITH SSW, SSQ, SSM, BCS, ESW & ESQ ONLY.

UNLESS OTHERWISE SPECIFIED, DIMENSIONS ARE IN INCHES.

TOLERANCES ARE:

DECIMALS	ANGLES
.XX: ±.01 [.3]	2°
.XXX: ±.005 [.13]	
.XXXX: ±.0020 [.051]	

PROPRIETARY NOTE

THIS DOCUMENT CONTAINS INFORMATION CONFIDENTIAL AND PROPRIETARY TO SAMTEC, INC. AND SHALL NOT BE REPRODUCED OR TRANSFERRED TO OTHER DOCUMENTS OR DISCLOSED TO OTHERS OR USED FOR ANY PURPOSE OTHER THAN THAT WHICH IT WAS OBTAINED WITHOUT THE EXPRESSED WRITTEN CONSENT OF SAMTEC, INC.

MATERIAL: DO NOT SCALE DRAWING

INSULATOR: PBT, UL 94 VO, COLOR: BLACK
TERMINAL: PHOSPHOR BRONZE

SHEET SCALE: 2:1

DESCRIPTION:

samtec

520 PARK EAST BLVD., NEW ALBANY, IN 47150
PHONE: 812-944-6733 FAX: 812-948-5047
e-Mail: info@SAMTEC.com code: 55322

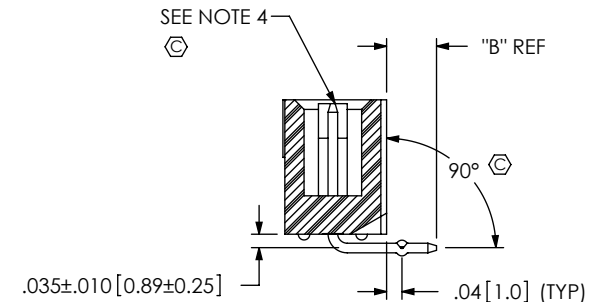
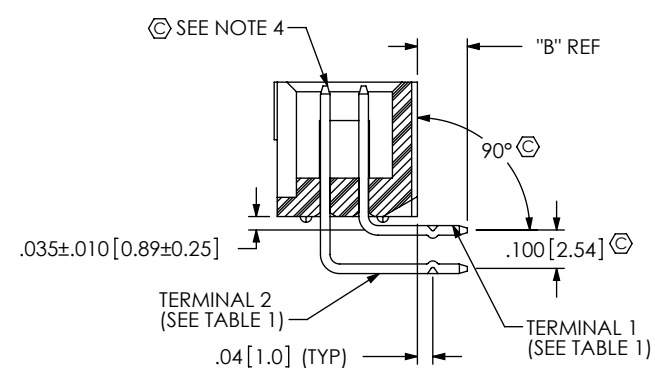
SLIM TOP SHROUD TERMINAL STRIP

DWG. NO.

TSS-1XX-XX-XXX-X-XX-XX

BY: JORDAN 01/23/1990

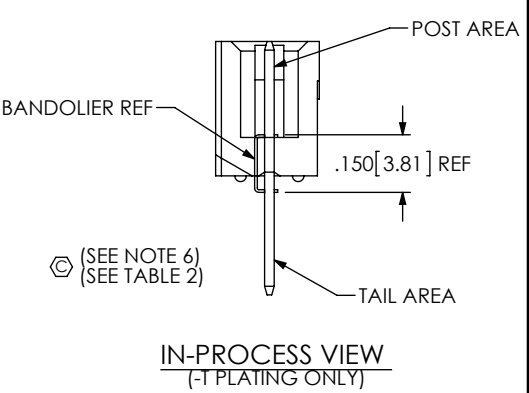
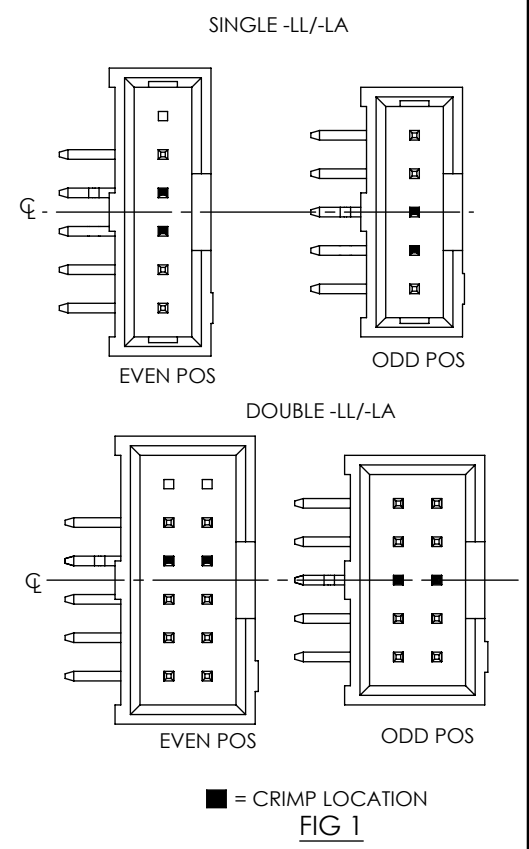
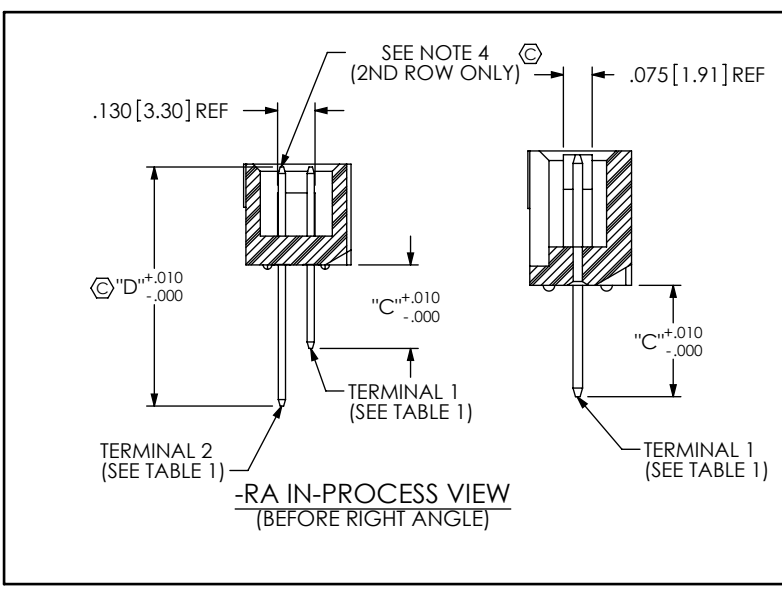
SHEET 1 OF 2



RIGHT ANGLE
(-LA IS SHOWN FOR DIMENSIONAL PURPOSES)

TABLE 2 (-T PLATING ONLY)		
NUMBER OF BAND MARKS ALLOWED IN THE POST AREA		
LEAD STYLE	PIN A	PIN B
-01	1	1
-02	1	1
-03	*0	*0
-04-RA	1	*0
-05-RA	*0	*0

* PINS TO BE FLIPPED OPPOSITE OF SELECTIVE PLATING BEFORE BEING INSERTED



IN-PROCESS VIEW
(-T PLATING ONLY)

TABLE 1						
LEAD STYLE	"A"	"B"	"C"	"D"	TERMINAL 1	TERMINAL 2
-01	.480[12.19]	N/A	N/A	N/A	T-1S6-17-X-2	N/A
-02	.530[13.46]	N/A	N/A	N/A	T-1S6-08-X-2	N/A
-03	.930[23.62]	N/A	N/A	N/A	T-1S6-11-X-2	N/A
-04	N/A	.130[3.30]	.280[7.11]	.830[21.08]	T-1S6-15-X-2	T-1S6-10-X-2
-05	N/A	.230[5.84]	.380[9.65]	.930[23.62]	T-1S6-09-X-2	T-1S6-11-X-2

PROPRIETARY NOTE
THIS DOCUMENT CONTAINS INFORMATION
CONFIDENTIAL AND PROPRIETARY TO
SAMTEC, INC. AND SHALL NOT BE REPRODUCED
OR TRANSFERRED TO OTHER DOCUMENTS OR
DISCLOSED TO OTHERS OR USED FOR ANY
PURPOSE OTHER THAN THAT WHICH IT WAS
OBTAINED WITHOUT THE EXPRESSED WRITTEN
CONSENT OF SAMTEC, INC.

DO NOT SCALE DRAWING

SHEET SCALE: 2:1

520 PARK EAST BLVD, NEW ALBANY, IN 47150
PHONE: 812-944-6733 FAX: 812-948-5047
e-Mail: info@SAMTEC.com code: 55322

DESCRIPTION:
SLIM TOP SHROUD TERMINAL STRIP

DWG. NO.
TSS-1XX-XX-XXX-X-XX-XX

BY: JORDAN 01/23/1990 SHEET 2 OF 2

Mouser Electronics

Authorized Distributor

Click to View Pricing, Inventory, Delivery & Lifecycle Information:

[Samtec:](#)

[TSS-107-01-L-S](#)