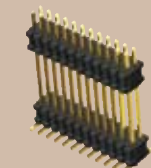




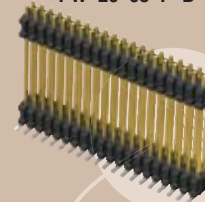
(1,27mm) .050"

FW SERIES



FW-12-05-G-D-530-101

FW-20-05-F-D-610-065



SMT MICRO BOARD STACKER

SPECIFICATIONS

For complete specifications and recommended PCB layouts see www.samtec.com?FW-SM

Insulator Material:

Black Liquid
Crystal Polymer

Terminal Material:

Phosphor Bronze

Plating:

Sn or Au over 50µ"

(1,27µm) Ni

Current Rating:

1.75A @ 80°C ambient

Operating Temp Range:

-55°C to +125°C

RoHS Compliant:

Yes

Processing:

Lead-Free Solderable:

Yes

SMT Lead Coplanarity:

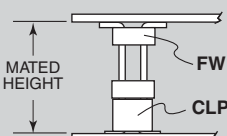
(0,10mm) .004" max (02-30)

(0,15mm) .006" max (31-50)



Mates with:
CLP, FFSD, FLE

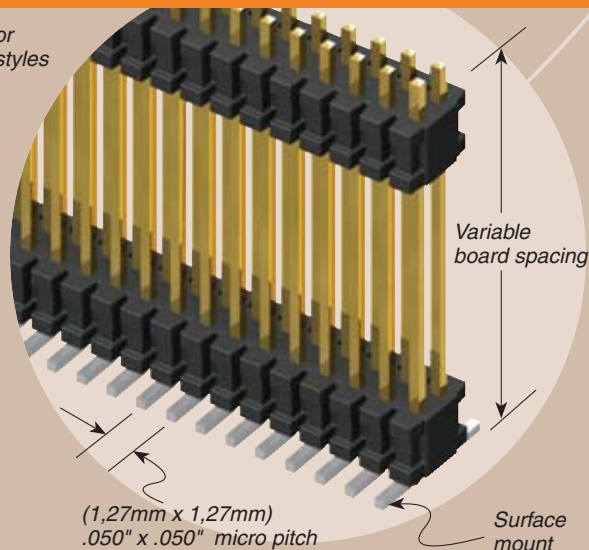
APPLICATIONS



LEAD STYLE		MATED HEIGHT*
FW	CLP	
FW-XX-03-X-X-233-065	-02	(8,13) .320
FW-XX-03-X-X-303-065		(9,91) .390

*Processing conditions will affect mated height.

Low profile or
skyscraper styles



(1,27mm x 1,27mm)
.050" x .050" micro pitch

ALSO AVAILABLE

- Smaller stack heights.
Call Samtec.

FW	NO. PINS PER ROW	LEAD STYLE	PLATING OPTION	D	STACKER HEIGHT	POST HEIGHT	OPTION
	02 thru 50	Specify LEAD STYLE from chart	<p>-F = Gold flash on post, Matte Tin on tail</p> <p>-L = 10µ" (0,25µm) Gold on post, Matte Tin on tail</p> <p>-G = 10µ" (0,25µm) Gold on post, Gold flash on tail</p>		<p>-“XXX” = Stacker Height (in inches) Example: -250 = (6,35mm) .250"</p>	<p>-“XXX” = Post Height (in inches) Example: -065 = (1,65mm) .065"</p>	<p>-ES = End Shroud (-075 post height only. Mate only with CLP.) (5,46mm) .215" to (15,49mm) .610" stacker height only 9 pins/row min.</p> <p>-EP = End Shroud with Guide Post (-075 post height only. Mate only with CLP.) (5,46mm) .215" to (15,49mm) .610" stacker height only 9 pins/row min.</p> <p>-A = Alignment Pin (3 positions min.) (5,46mm) .215" to (15,75mm) .620" stacker height only</p> <p>-P = Pick & Place Pad (5 positions min.)</p> <p>-TR = Tape & Reel (Post+Stacker Height = (17,46mm) .687 max.)</p>

LEAD STYLE

LEAD STYLE	STACKER HEIGHT	STACKER + POST
-03	(5,46) .215 to (8,51) .335	(7,11) .280 to (10,16) .400
-05	(8,64) .340 to (15,49) .610	(10,29) .405 to (17,15) .675

No. of positions x (1,27) .050

POST HEIGHT (1,65) .065 MIN

STACKER HEIGHT

Diagram of various options: -ES, -P, -A, -EP

TAPE & REEL AVAILABILITY

No tooling charges.
Minimum order is the lesser of a full reel quantity or 125 pieces.
Order any quantity above minimum.
In-house design, manufacture.
Quick turn-around.

Call Samtec for specifications and ordering information.

Note: This Series is non-standard, non-returnable.

Due to technical progress, all designs, specifications and components are subject to change without notice.

WWW.SAMTEC.COM

SAMTEC USA • Tel: 1-800-SAMTEC-9 or 812-944-6733 SAMTEC NORTHWEST CALIFORNIA • Tel: 408-395-5900 SAMTEC SOUTHERN CALIFORNIA • Tel: 1-800-726-8329
SAMTEC AMERICA LATINA COMERCIO EXTERIOR LTDA • Tel: (+55 31) 3786 3227 SAMTEC UNITED KINGDOM • Tel: 44 01236 739292 SAMTEC GERMANY • Tel: +49 (0) 89 / 89460-0
SAMTEC FRANCE • Tel: 33 01 60 95 06 60 SAMTEC ITALY • Tel: 39 039 6890337 SAMTEC NORDIC/BALTIC • Tel: +46-84477280 SAMTEC BENELUX • Tel: 44 01236 739292
SAMTEC ISRAEL • Tel: 972-3-7526600 SAMTEC INDIA • Tel: +91-80-3272 1612 SAMTEC ASIA PACIFIC • Tel: 65 6745-5955 SAMTEC JAPAN • Tel: 045-475-1385 SAMTEC CHINA • Tel: 86-21-6083 3766
SAMTEC TAIWAN • Tel: 886-2-2735-6109 SAMTEC HONG KONG • Tel: 852-26904858 SAMTEC KOREA • Tel: 82-31-717-5685 SAMTEC ANZ • Tel: 613 9580 0683

Mouser Electronics

Authorized Distributor

Click to View Pricing, Inventory, Delivery & Lifecycle Information:

[Samtec:](#)

[FW-05-03-L-D-225-075-P-TR](#) [FW-07-03-F-D-300-100](#) [FW-07-03-L-D-250-100](#)