

BOX CONNECTOR STRIPS BCS SERIES

SPECIFICATIONS

For complete specifications see www.samtec.com?BCS

Insulator Material:

Black Liquid Crystal Polymer

Contact Material:

Phosphor Bronze

Current Rating:

3A @ 80°C ambient

(-TE/-DE/-PE mated with TSM)

4A @ 80°C ambient

(-HE mated with TSW-D)

Voltage Rating:

475 VAC

(-TE/-DE/-PE mated with TSM)

450 VAC

(-HE mated with TSW)

Operating Temp Range:

-65°C to

+125°C

Max Processing Temp:

260°C for 10

seconds and

230°C for 30 to

60 seconds

Plating:

Au, PdNi or Sn over 50µ"

(1,27µm) Ni

Contact Resistance:

10 m max

Insertion Depth:

(4,34mm) to

(6,55mm)

.171" to .285" from top,

(5,64mm) .222" plus board

thickness minimum from

bottom.

-HE is (4,34mm) .171" to

(6,35mm) .250"

Insertion Force:

(Single contact only)

5oz (1,39N) avg (.025"

(0,64mm) SQ pin)

Withdrawal Force:

(Single contact only)

3oz (0,83N) avg (.025"

(0,64mm) SQ pin)



BCS

1

NO. PINS
PER ROW

PLATING
OPTION

ROW
OPTION

ENTRY
OPTION

OTHER
OPTION

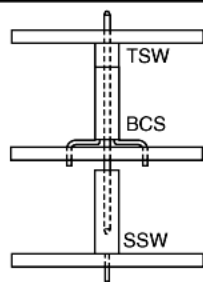
Mates with:
TSW, MTSW, TSS,
ZSS, DW, EW, ZW,
HW, TSM, MTLW

-L
= 10µ" (0,25µm)
Gold on Contact,
Tin on tail

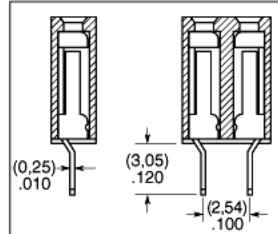
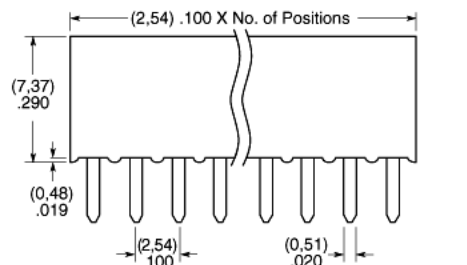
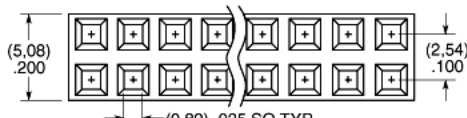
-S
= Single
-D
= Double

-“XX”
= Polarized
Position
(-BE not
available)

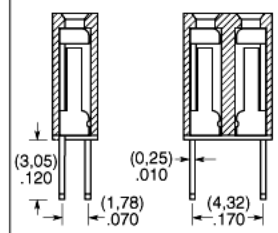
APPLICATION



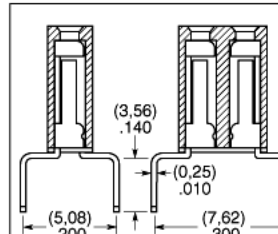
01 thru 50



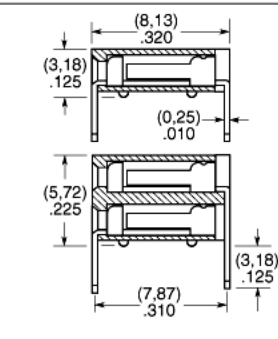
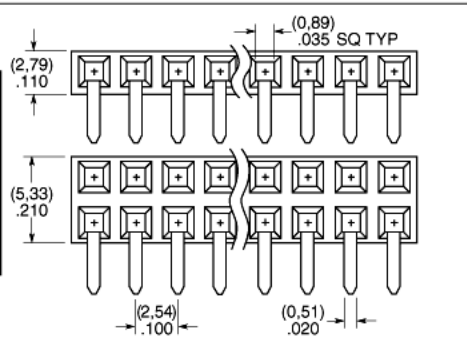
-TE
= Top
Entry



-DE
= Top Entry
(For Bottom
Entry specify
-DE-BE)
Cannot be
used with plated
through-holes



-PE
= Pass
Through
Entry
(For Bottom
Entry specify
-PE-BE)



-HE
= Horizontal
Entry

Note: Some lengths, styles and options are non-standard, non-returnable.

Due to technical progress, all designs, specifications and components are subject to change without notice.

WWW.SAMTEC.COM

SAMTEC USA • Tel: 1-800-SAMTEC-9 or 812-944-6733 • Fax: 812-948-5047 SAMTEC UK • Tel: 01236 739292 • Fax: 01236 727113 SAMTEC GERMANY • Tel: +49 (0) 89 / 89460-0 • Fax: +49 (0) 89 / 89460-299
SAMTEC FRANCE • Tel: 01 60 95 06 60 • Fax: 01 60 95 06 61 SAMTEC ITALY • Tel: 39 039 6890337 • Fax: 39 039 6890315 SAMTEC ISRAEL • Tel: 972-3-7526600 • Fax: 972-3-7526690
SAMTEC SCANDINAVIA • Tel: +46-84477280 • Fax: +46-87420413 SAMTEC ASIA PACIFIC • Tel: 65 6745-5955 • Fax: 65 6841-1502 SAMTEC JAPAN • Tel: 81-424-42-8318 • Fax: 81-424-42-8319
SAMTEC CHINA • Tel: 86-21-5385-4089 • Fax: 86-21-5385-4047 SAMTEC TAIWAN • Tel: 886-02-2364-6077 • Fax: 886-02-2367-9531
SAMTEC HONG KONG • Tel: 852-26904858 • Fax: 852-26904842 SAMTEC ANZ • Tel: 613 9512 7747 • Fax: 613 9512 7745

Mouser Electronics

Authorized Distributor

Click to View Pricing, Inventory, Delivery & Lifecycle Information:

[Samtec:](#)

[BCS-115-L-D-PE-022](#)