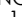




NOTES:

1.  REPRESENTS A CRITICAL DIMENSION.
2. BURR ALLOWANCE: .003[.08] MAX.
3. PARTS TO BE MOLDED TO POSITION.
4. MINIMUM PIN PULLOUT FORCE: 4.000LB[17.79N]
5. CONTACT MUST BE INSERTED UNTIL RETENTION FEATURE LOCKS INTO PLACE.
6. ALL FINISHED GOODS ARE TO BE ELECTRICAL TESTED INCLUDING HI-POT TEST @ 1000 VOLTS DC. AFTER FINAL ELECTRICAL TEST, LABEL EACH ASSEMBLY WITH 1 LABEL-ET. 
7. TINNED COPPER WIRE IS ROHS COMPLIANT.
8. PARTS ARE TO BE LAYER PACKAGED.
9. MINIMUM METAL LATCH RETENTION FORCE: 1.000LB[4.45N]
10. REFER TO CRIMP SPECIFICATIONS PRINT FOR CRIMP AND STRIP DIMENSIONS, TOLERANCES, AND TOOLING. 
11. FOR LENGTHS LESS THAN 12 IN, TOLERANCE SHALL BE ± 1.25 [3.18]. FOR OTHER LENGTHS, TOLERANCES SHALL BE $\pm 2\%$.
12. LOCATION OF GATE PAD IS AT THE DISCRETION OF THE VENDOR.

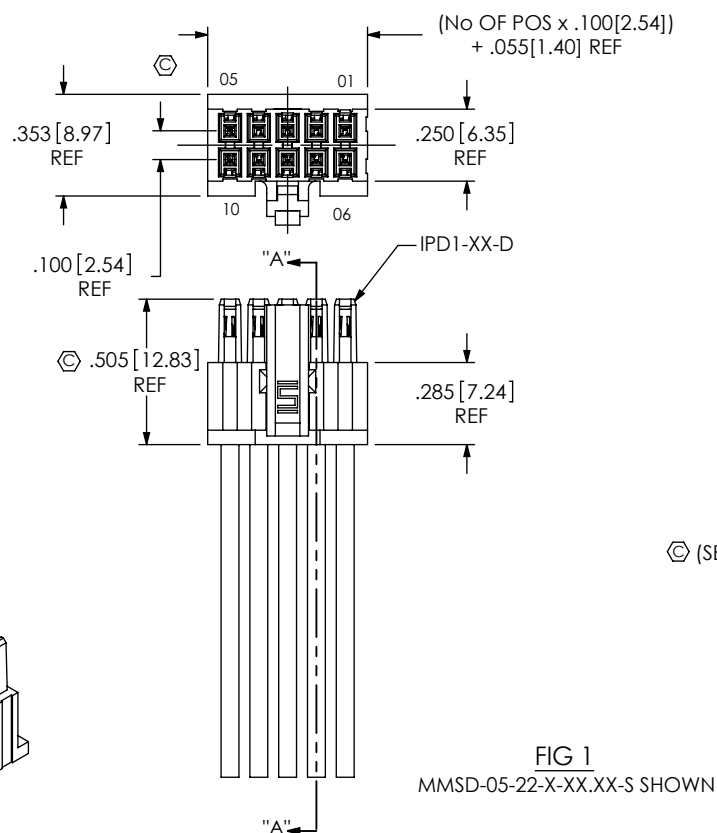


FIG 1
MMSD-05-22-X-XX.XX-S SHOWN

TABLE 1

SERIES	WIRE GAUGE	CABLE	CONTACT
MMSD	20 AWG	DWC-20-XX-300	C-179-03-X
MMSD	22 AWG	DWC-22-XX-300	C-179-03-X
MMSD	24 AWG	DWC-24-XX-300	C-179-03-X
MMSD	26 AWG	DWC-26-XX-300	C-179-02-X
MMSD	28 AWG	DWC-28-XX-300	C-179-02-X
MMSD	30 AWG	DWC-30-XX-300	C-179-02-X
MMSDT	20 AWG	DWCT-20-XX	C-179-03-X
MMSDT	24 AWG	DWCT-24-XX	C-179-02-X
MMSDT	28 AWG	DWCT-28-XX	C-179-04-X
MMSDT	30 AWG	DWCT-30-XX	C-179-04-X

C:\EnterpriseVault\dwg\MISC\Mktg\MMSDX-XX-XXX-X-XX.XX-X-X-XXX-MKT.SLDDRW

MMSDX-XX-XXX-X-XX.XX-X-X-XXX

FEP CABLE OPTION
-I: FEP INSULATION
(LEAVE BLANK FOR STANDARD
PVC INSULATION)

No OF POSITIONS
-02 THRU -25
(PER ROW)

WIRE GAUGE (AWG)
PVC: -20, -22, -24, -26, -28, -30
FEP: -20, -24, -28, -30

COLOR CODE
C (SEE TABLE 3, SHEET 3)
(LEAVE BLANK FOR STANDARD
BLACK CABLE)
(NOT AVAILABLE WITH FEP OPTION)

PLATING SPECIFICATION

-F: FLASH SELECTIVE (USE C-179-XX-F)
-L: LIGHT SELECTIVE (USE C-179-XX-L)
-S: SELECTIVE (USE C-179-XX-S)

ASSEMBLED LENGTH

SPECIFY IN INCHES (USE DWC-XX-XX)
(SINGLE END: 03.00 INCH MINIMUM,
DOUBLE END: 03.25 INCH MINIMUM)

END OPTION

-S: SINGLE END
-D: DOUBLE END
(MUST CHOOSE FROM
LUS, LDS, LUX, LDX, MUS,
MDS, MUX, OR MDX)

OPTION

SINGLE

-M: METAL LATCH (USE IPD1-XX-D-X-M)
(LEAVE BLANK FOR PLASTIC)

DOUBLE

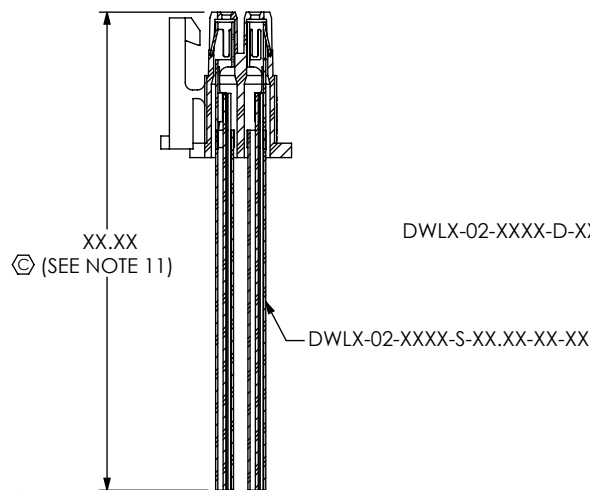
-LUS: PLASTIC LATCH UP, STRAIGHT
-LDS: PLASTIC LATCH DOWN, STRAIGHT
-LUX: PLASTIC LATCH UP, CROSSED
-LDX: PLASTIC LATCH DOWN, CROSSED
-MUS: METAL LATCH UP, STRAIGHT
-MDS: METAL LATCH DOWN, STRAIGHT
-MUX: METAL LATCH UP, CROSSED
-MDX: METAL LATCH DOWN, CROSSED

POLARIZATION OPTION

(-P, -K, OR -G OPTION IS REQUIRED.)

-P: POLARIZATION (SEE FIG 3, SHEET 2)
(NOT AVAILABLE WITH -LUS, -LDS, -LUX, -K, -G OPTIONS)
-K: KEYED POLARIZATION
(USE IPD1-XX-D-K) (SEE FIG 4, SHEET 2)
(NOT AVAILABLE WITH -P, -G OPTIONS)
-G: GUIDE POST
(USE IPD1-XX-D-GP) (SEE FIG 6, SHEET 3)
(NOT AVAILABLE WITH -LDS, -LUX, -P, -K OPTIONS)

(LEAVE BLANK FOR NO POLARIZATION;
AVAILABLE TO EXISTING CUSTOMERS ONLY)



SECTION "A"-"A"

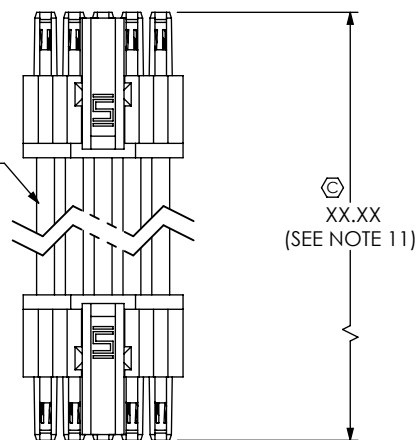


FIG 2
MMSD-05-22-X-XX.XX-D SHOWN

UNLESS OTHERWISE SPECIFIED,
DIMENSIONS ARE IN INCHES.

TOLERANCES ARE:

DECIMALS ANGLES
.XX: $\pm .01$ [.3] 2°
.XXX: $\pm .005$ [.13]
.XXXX: $\pm .0020$ [.051]

PROPRIETARY NOTE

THIS DOCUMENT CONTAINS INFORMATION
CONFIDENTIAL AND PROPRIETARY TO
SAMTEC, INC. AND SHALL NOT BE REPRODUCED
OR TRANSFERRED TO OTHER DOCUMENTS OR
DISCLOSED TO OTHERS OR USED FOR ANY
PURPOSE OTHER THAN THAT WHICH IT WAS
OBTAINED WITHOUT THE EXPRESSED WRITTEN
CONSENT OF SAMTEC, INC.

MATERIAL: DO NOT SCALE DRAWING SHEET SCALE: 1:0.666667

HOUSING: NYLON 66, COLOR: WHITE
CONTACT: PHOS BRONZE
CABLE/INSULATION: SEE CALLOUT
WIRE: TINNED COPPER
LATCH: NICKEL-PLATED BeCu, #25, 1/2 HT

samtec

520 PARK EAST BLVD, NEW ALBANY, IN 47150
PHONE: 812-944-6733 FAX: 812-948-5047
e-Mail: info@SAMTEC.com code 55322

DESCRIPTION:

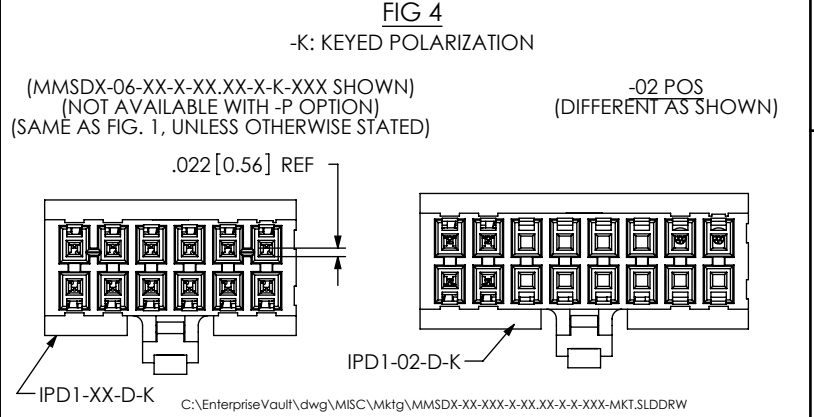
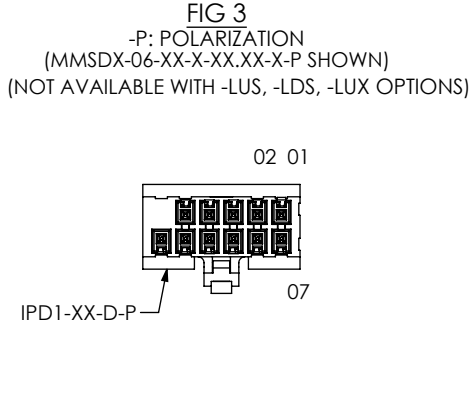
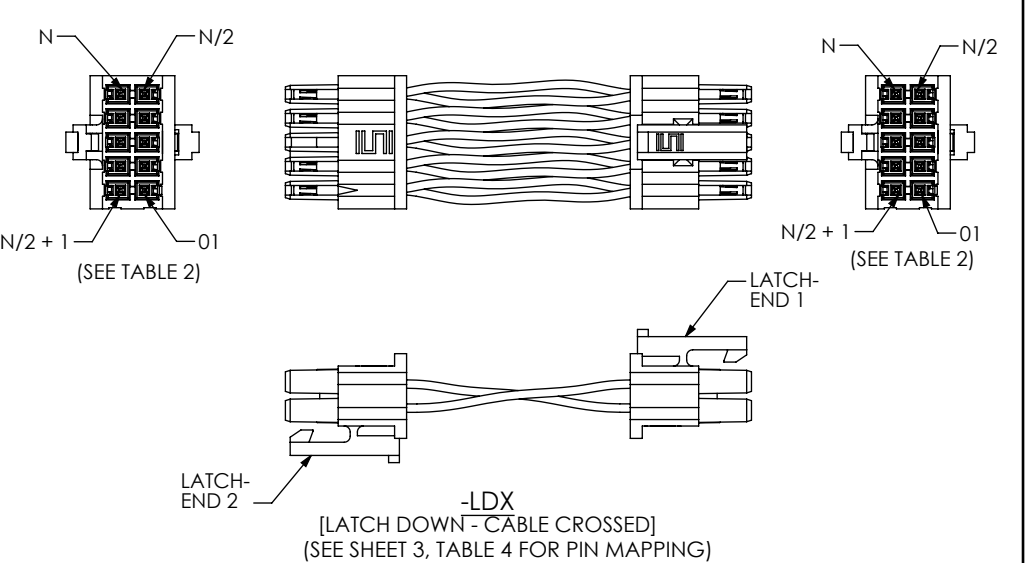
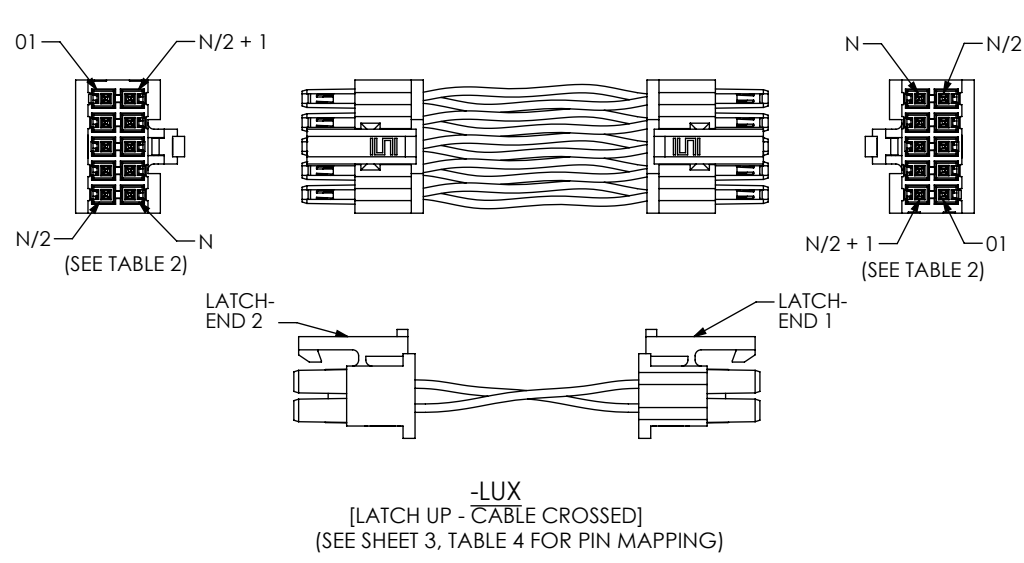
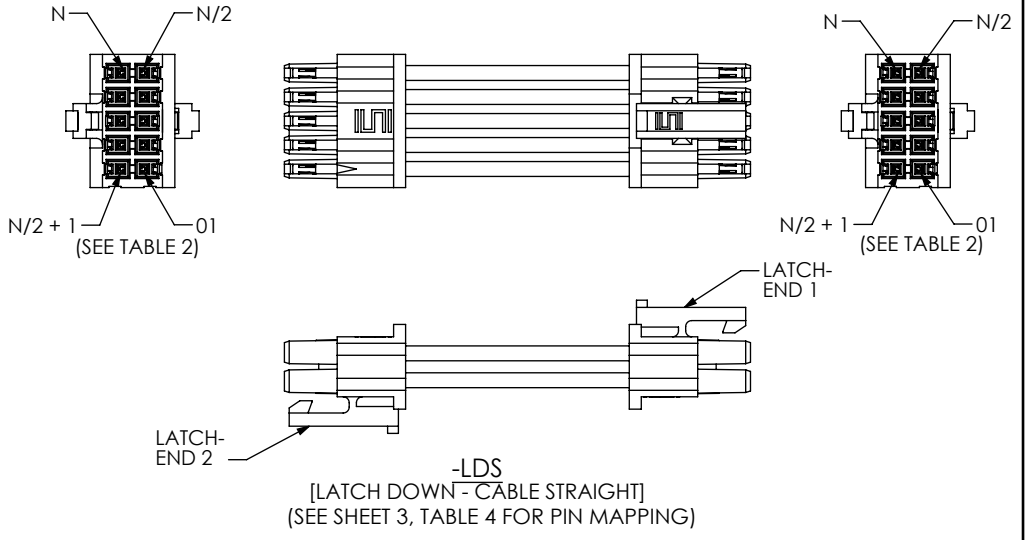
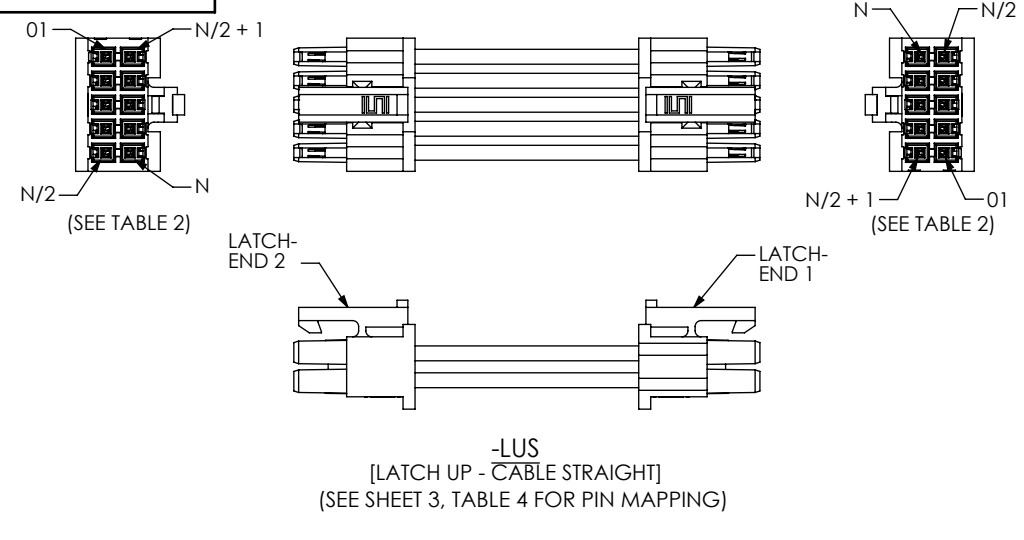
.100[2.54] SOCKET DISCRETE CABLE ASSEMBLY

DWG. NO.

MMSDX-XX-XXX-X-XX.XX-X-X-XXX

BY: DEAN P 07/16/2004 SHEET 1 OF 3

REVISION AE



PROPRIETARY NOTE
THIS DOCUMENT CONTAINS INFORMATION
CONFIDENTIAL AND PROPRIETARY TO
SAMTEC, INC. AND SHALL NOT BE REPRODUCED
OR TRANSFERRED TO OTHER DOCUMENTS OR
DISCLOSED TO OTHERS OR USED FOR ANY
PURPOSE OTHER THAN THAT WHICH IT WAS
OBTAINED WITHOUT THE EXPRESSED WRITTEN
CONSENT OF SAMTEC, INC.

DO NOT SCALE DRAWING

SHEET SCALE: 1:25:1

520 PARK EAST BLVD, NEW ALBANY, IN 47150
PHONE: 812-944-6733 FAX: 812-948-5047
e-Mail: info@SAMTEC.com code 55322

DESCRIPTION: .100[2.54] SOCKET DISCRETE CABLE ASSEMBLY		
DWG. NO. MMSDX-XX-XXX-X-XX.XX-X-X-XXX		
BY: DEAN P	07/16/2004	SHEET 2 OF 3

FIG 5
(MMSDX-06-XX-X-XX.XX-S-M SHOWN)
(SAME AS FIG 1, UNLESS OTHER WISE STATED)

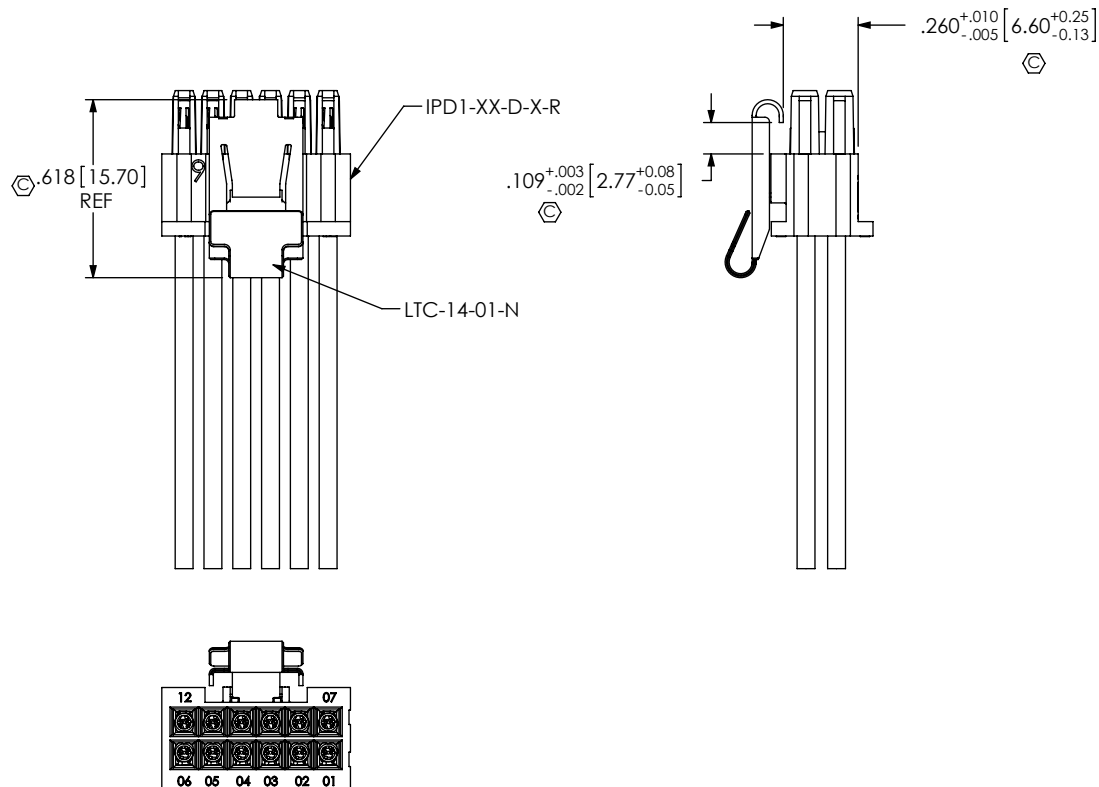


FIG 6
(MMSDX-06-XX-X-XX.XX-S-G SHOWN)
(NOT AVAILABLE WITH -LDS, -LUX, -P, -K OPTIONS)
(SAME AS FIG 1, UNLESS OTHER WISE STATED)

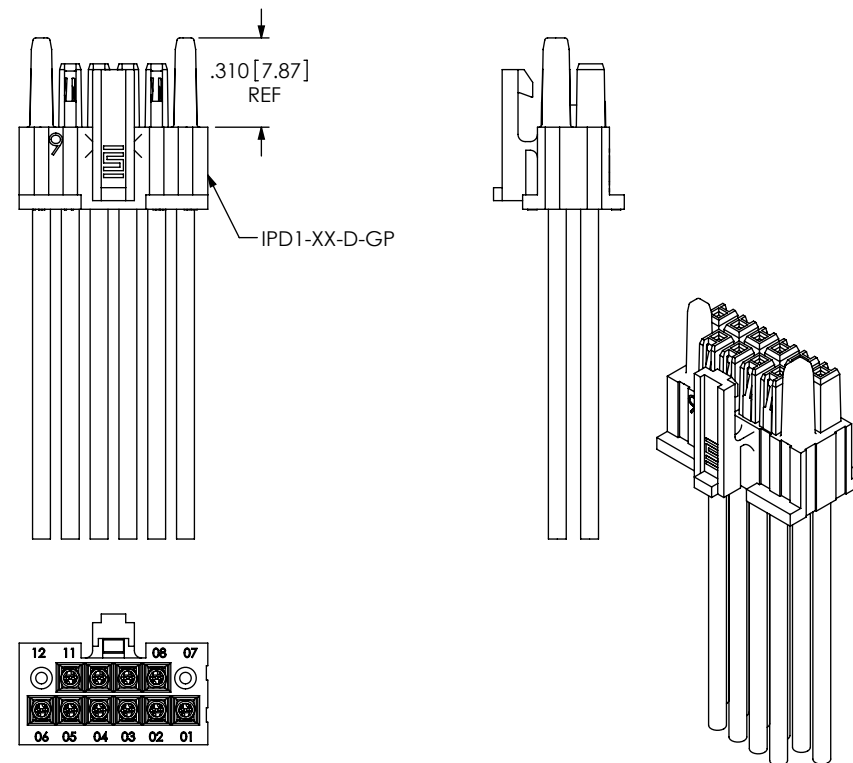


TABLE 3

MMSD COLOR CODED WIRE SEQUENCE

	COLOR									
	BROWN	RED	ORANGE	YELLOW	GREEN	BLUE	VIOLET	GRAY	WHITE	BLACK
PIN#	1	2	3	4	5	6	7	8	9	10
	11	12	13	14	15	16	17	18	19	20
	21	22	23	24	25	26	27	28	29	30
	31	32	33	34	35	36	37	38	39	40
	41	42	43	44	45	46	47	48	49	50

TABLE 2

No. OF POSITIONS	N	N/2	N/2 + 1
-05	10	5	6
-07	14	7	8
-10	20	10	11
-15	30	15	16
-20	40	20	21
-25	50	25	26

**CRITICAL DIMENSION INSPECTION
INSTRUCTION TABLE**

ASSEMBLY OPERATION	IN-PROCESS INSPECTION
CUT CABLE/STRIP	C6
CRIMP CONTACTS	C6
POKE CONTACTS	C1, C2, C3, C4
ASSEMBLE LTC-14-01-N	C7, C8, C9
E-TEST	C5

Table 4- Pin Mapping

End Option (Double)	END 1	END 2
-LUS	01	N/2
-LDS	01	N/2+1
-LUX	01	N
-LDX	01	01
-MUS	01	N/2
-MDS	01	N/2+1
-MUX	01	N
-MDX	01	01

PROPRIETARY NOTE

THIS DOCUMENT CONTAINS INFORMATION CONFIDENTIAL AND PROPRIETARY TO SAMTEC, INC. AND SHALL NOT BE REPRODUCED OR TRANSFERRED TO OTHER DOCUMENTS OR DISCLOSED TO OTHERS OR USED FOR ANY PURPOSE OTHER THAN THAT WHICH IT WAS OBTAINED WITHOUT THE EXPRESSED WRITTEN CONSENT OF SAMTEC, INC.

DO NOT SCALE DRAWING

SHEET SCALE: 2:1

samtec

520 PARK EAST BLVD, NEW ALBANY, IN 47150
PHONE: 812-944-6733 FAX: 812-948-5047
e-Mail: info@SAMTEC.com code 55322

DESCRIPTION:

.100[2.54] SOCKET DISCRETE CABLE ASSEMBLY

DWG. NO.

MMSDX-XX-XXX-X-XX.XX-X-X-XXX

BY: DEAN P 07/16/2004 SHEET 3 OF 3

Mouser Electronics

Authorized Distributor

Click to View Pricing, Inventory, Delivery & Lifecycle Information:

[Samtec:](#)

[MMSD-15-22-L-06.00-D-K-LUX](#) [MMSD-05-26-L-06.00-D-K-MUS](#) [MMSD-15-24C-L-12.00-S-K-M](#)