

# REVISION W

DO NOT  
SCALE FROM  
THIS PRINT

## NOTES:

1. REPRESENTS A CRITICAL DIMENSION.
2. BURR ALLOWANCE: .003[0.08] MAX.
3. PARTS TO BE MOLDED TO POSITION.
4. MINIMUM PULLOUT FORCE: 5 lbs [22.24 N].
5. CONTACT MUST BE INSERTED UNTIL RETENTION FEATURE LOCKS INTO PLACE.
6. ALL FINISHED GOODS ARE TO BE ELECTRICAL TESTED INCLUDING HI-POT TEST @ 1000 VOLTS DC. AFTER FINAL ELECTRICAL TEST, LABEL EACH ASSEMBLY WITH 1 LABEL-ET.
7. TINNED COPPER WIRE CONTAINS LEAD.
8. PARTS ARE TO BE LAYER PACKAGED.
9. CONTACTS OFFSET FOR POLARIZATION.
10. REFER TO CRIMP SPECIFICATIONS PRINT FOR CRIMP AND STRIP DIMENSIONS, TOLERANCES, TOOLING AND ITS REQUIREMENTS.
11. FOR LENGTHS LESS THAN 12 IN, TOLERANCE SHALL BE  $\pm 0.125$ [3.18]. FOR OTHER LENGTHS, TOLERANCES SHALL BE  $\pm 2\%$ .

**W**

**W**

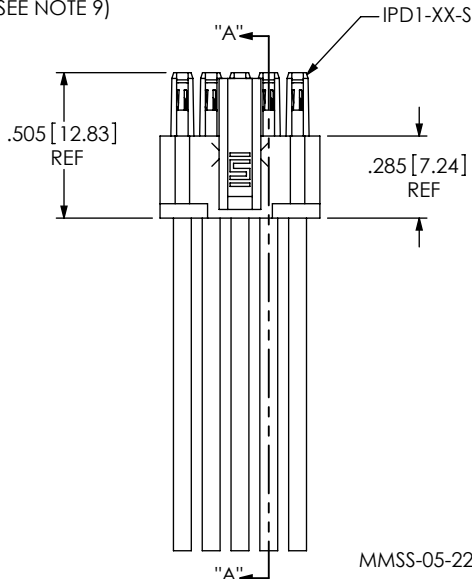
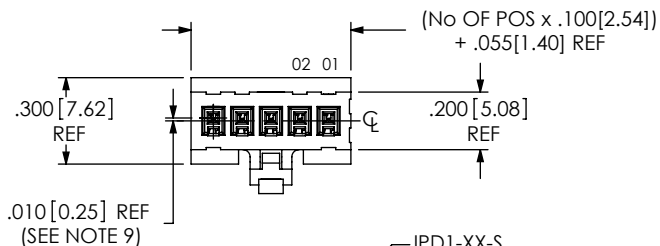


FIG 1

MMSS-05-22-X-XX.XX-S SHOWN

TABLE 1

SERIES	WIRE GAUGE	CABLE	CONTACT
MMSS	20 AWG	DWC-20-XX-300	C-179-03-X
MMSS	22 AWG	DWC-22-XX-300	C-179-03-X
MMSS	24 AWG	DWC-24-XX-300	C-179-03-X
MMSS	26 AWG	DWC-26-XX-300	C-179-02-X
MMSS	28 AWG	DWC-28-XX-300	C-179-02-X
MMSS	30 AWG	DWC-30-XX-300	C-179-02-X
MMSST	20AWG	DWCT-20-XX	C-179-03-X
MMSST	24AWG	DWCT-24-XX	C-179-02-X
MMSST	28AWG	DWCT-28-XX	C-179-04-X
MMSST	30AWG	DWCT-30-XX	C-179-04-X

TABLE 2

MMSS COLOR CODED WIRE SEQUENCE

PIN#	COLOR									
	BROWN	RED	ORANGE	YELLOW	GREEN	BLUE	VIOLET	GRAY	WHITE	BLACK
1	2	3	4	5	6	7	8	9	10	

MMSSX-XX-XXX-X-XX.XX-X-X-XXX

FEP CABLE OPTION  
-T: FEP INSULATION  
(LEAVE BLANK FOR  
STANDARD PVC INSULATION)

No OF POSITIONS  
-02 THRU -25

WIRE GAUGE (AWG)  
PVC: -20, -22, -24, -26, -28, -30  
FEP: -20, -24, -28, 30

COLOR CODE  
C (SEE TABLE 2)  
(LEAVE BLANK FOR  
STANDARD BLACK CABLE)  
(NOT AVAILABLE WITH FEP OPTION)

PLATING SPECIFICATION  
-F: FLASH SELECTIVE (USE C-179-XX-F)  
-L: LIGHT SELECTIVE (USE C-179-XX-L)  
-S: SELECTIVE (USE C-179-XX-S)

OPTION

SINGLE

-M: METAL LATCH (USE IPD1-XX-S-X-M)  
(LEAVE BLANK FOR PLASTIC)

DOUBLE

[MUST BE USED ON -D END OPTION ONLY  
& APPLIES TO END 2 HOUSING]

-LUS: PLASTIC LATCH UP, STRAIGHT

-LDS: PLASTIC LATCH DOWN, STRAIGHT

-MUS: METAL LATCH UP, STRAIGHT

-MDS: METAL LATCH DOWN, STRAIGHT

OPTION

-K: KEYED POLARIZATION

(USE IPD1-XX-S-K)

(SEE FIG 3, SHEET 2)

(LEAVE BLANK FOR NO POLARIZATION;  
AVAILABLE TO EXISTING CUSTOMERS ONLY)

END OPTION

-S: SINGLE END

-D: DOUBLE END (MUST CHOOSE XUS OR XDS OPTIONS.)

ASSEMBLED LENGTH

SPECIFY IN INCHES [USE DWCX-XX-XX]  
(SINGLE END: 03.00[76.2] INCH MINIMUM,  
DOUBLE END: 03.25[82.6] INCH MINIMUM)

XX.XX  
(SEE NOTE 11)

SECTION "A"-"A"

C-179-XX-X

DWC-XX-10-300

XX.XX  
(SEE NOTE 11)

FIG 2

MMSS-05-22-X-XX.XX-D-LUS SHOWN

UNLESS OTHERWISE SPECIFIED,  
DIMENSIONS ARE IN INCHES.

TOLERANCES ARE:

DECIMALS ANGLES  
.XX:  $\pm 0.01$  [0.3] 2°  
.XXX:  $\pm 0.005$  [0.13]  
.XXXX:  $\pm 0.0020$  [0.051]

## PROPRIETARY NOTE

THIS DOCUMENT CONTAINS INFORMATION  
CONFIDENTIAL AND PROPRIETARY TO  
SAMTEC, INC. AND SHALL NOT BE REPRODUCED  
OR TRANSFERRED TO OTHER DOCUMENTS OR  
DISCLOSED TO OTHERS OR USED FOR ANY  
PURPOSE OTHER THAN THAT WHICH IT WAS  
OBTAINED WITHOUT THE EXPRESSED WRITTEN  
CONSENT OF SAMTEC, INC.

MATERIAL: DO NOT SCALE DRAWING

SHEET SCALE: 1.5:1

HOUSING: NYLON 6/6, COLOR: WHITE  
CONTACT: PHOS BRONZE  
CABLE: INSULATION: SEE CALLOUT  
WIRE: TINNED COPPER

F:\DWG\MISC\MKTG\MMSSX-XX-XXX-X-XX.XX-X-X-XXX-MKT.SLDDRW

**samtec**

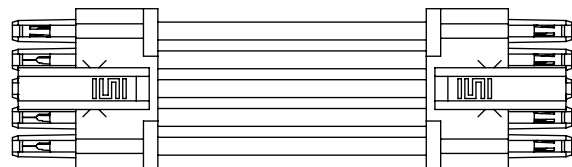
520 PARK EAST BLVD, NEW ALBANY, IN 47150  
PHONE: 812-944-6733 FAX: 812-948-5047  
e-Mail: info@SAMTEC.com code 55322

DESCRIPTION:  
.100[2.54] SOCKET DISCREET CABLE ASSEMBLY

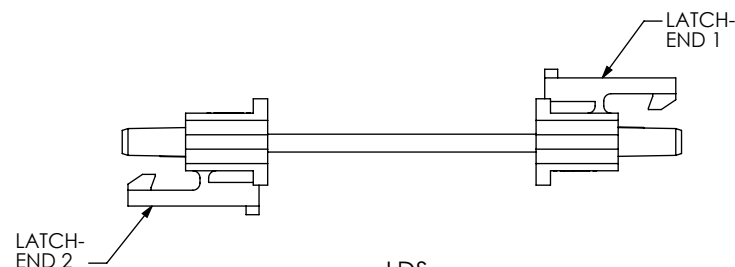
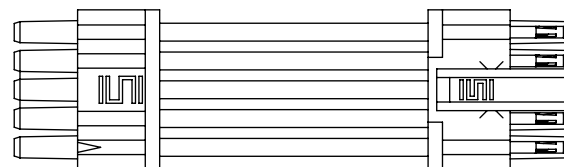
DWG. NO.

MMSSX-XX-XXX-X-XX.XX-X-X-XXX

BY: DEAN P 05/03/2005 SHEET 1 OF 3



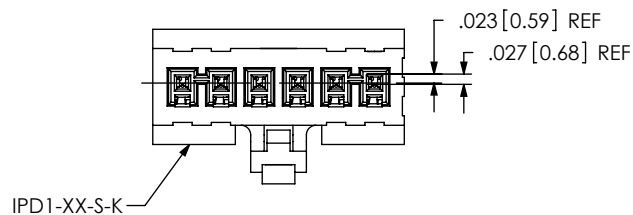
-LUS  
[LATCH UP- CABLE STRAIGHT]



-LDS  
[LATCH DOWN- CABLE STRAIGHT]

FIG 3

-K: KEYED POLARIZATION  
(MMSSX-06-XX-X-XX.XX-X-K-XXX SHOWN)  
(SAME AS FIG 1, UNLESS OTHERWISE STATED)



PROPRIETARY NOTE

THIS DOCUMENT CONTAINS INFORMATION  
CONFIDENTIAL AND PROPRIETARY TO  
SAMTEC, INC. AND SHALL NOT BE REPRODUCED  
OR TRANSFERRED TO OTHER DOCUMENTS OR  
DISCLOSED TO OTHERS OR USED FOR ANY  
PURPOSE OTHER THAN THAT WHICH IT WAS  
OBTAINED WITHOUT THE EXPRESSED WRITTEN  
CONSENT OF SAMTEC, INC.

DO NOT SCALE DRAWING

SHEET SCALE: 1.5:1

**samtec**

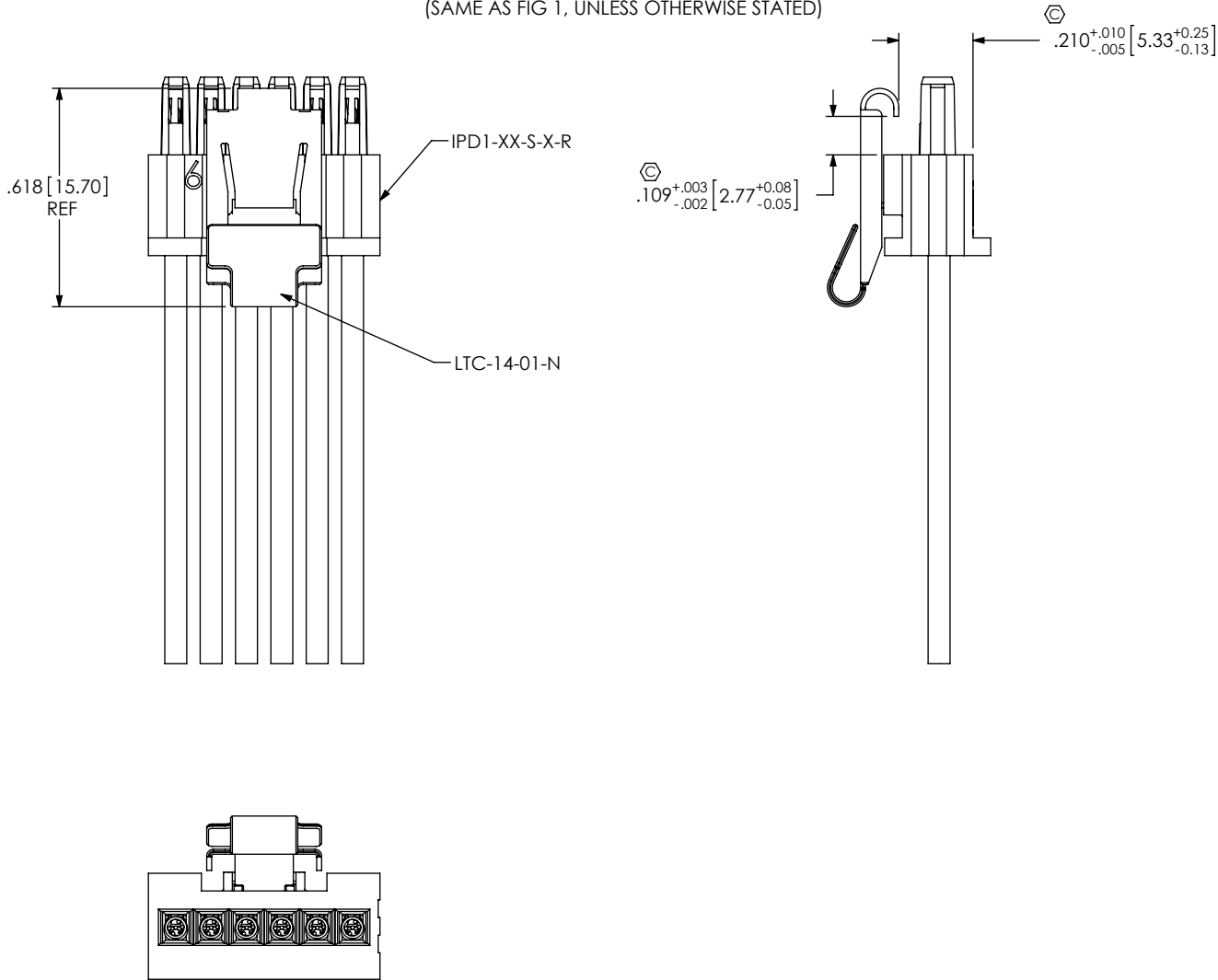
520 PARK EAST BLVD, NEW ALBANY, IN 47150  
PHONE: 812-944-6733 FAX: 812-948-5047  
e-Mail: info@SAMTEC.com code 55322

DESCRIPTION:  
.100[2.54] SOCKET DISCREET CABLE ASSEMBLY

DWG. NO.  
MMSSX-XX-XXX-X-XX.XX-X-X-XXX

BY: DEAN P 05/03/2005 SHEET 2 OF 3

FIG 4  
(MMSSX-06-XX-X-XX.XX-S-M SHOWN)  
(SAME AS FIG 1, UNLESS OTHERWISE STATED)



PROPRIETARY NOTE  
THIS DOCUMENT CONTAINS INFORMATION  
CONFIDENTIAL AND PROPRIETARY TO  
SAMTEC, INC. AND SHALL NOT BE REPRODUCED  
OR TRANSFERRED TO OTHER DOCUMENTS OR  
DISCLOSED TO OTHERS OR USED FOR ANY  
PURPOSE OTHER THAN THAT WHICH IT WAS  
OBTAINED WITHOUT THE EXPRESSED WRITTEN  
CONSENT OF SAMTEC, INC.

DO NOT SCALE DRAWING

SHEET SCALE: 1:1

**samtec**

520 PARK EAST BLVD, NEW ALBANY, IN 47150  
PHONE: 812-944-6733 FAX: 812-948-5047  
e-Mail info@SAMTEC.com code 55322

DESCRIPTION:  
.100[2.54] SOCKET DISCREET CABLE ASSEMBLY

DWG. NO.  
MMSSX-XX-XXX-X-XX.XX-X-X-XXX

BY: DEAN P 05/03/2005 SHEET 3 OF 3

# Mouser Electronics

Authorized Distributor

Click to View Pricing, Inventory, Delivery & Lifecycle Information:

[Samtec:](#)

[MMSS-02-20-L-04.50-D-K-LDS](#) [MMSS-02-24-L-78.74-S-K](#)