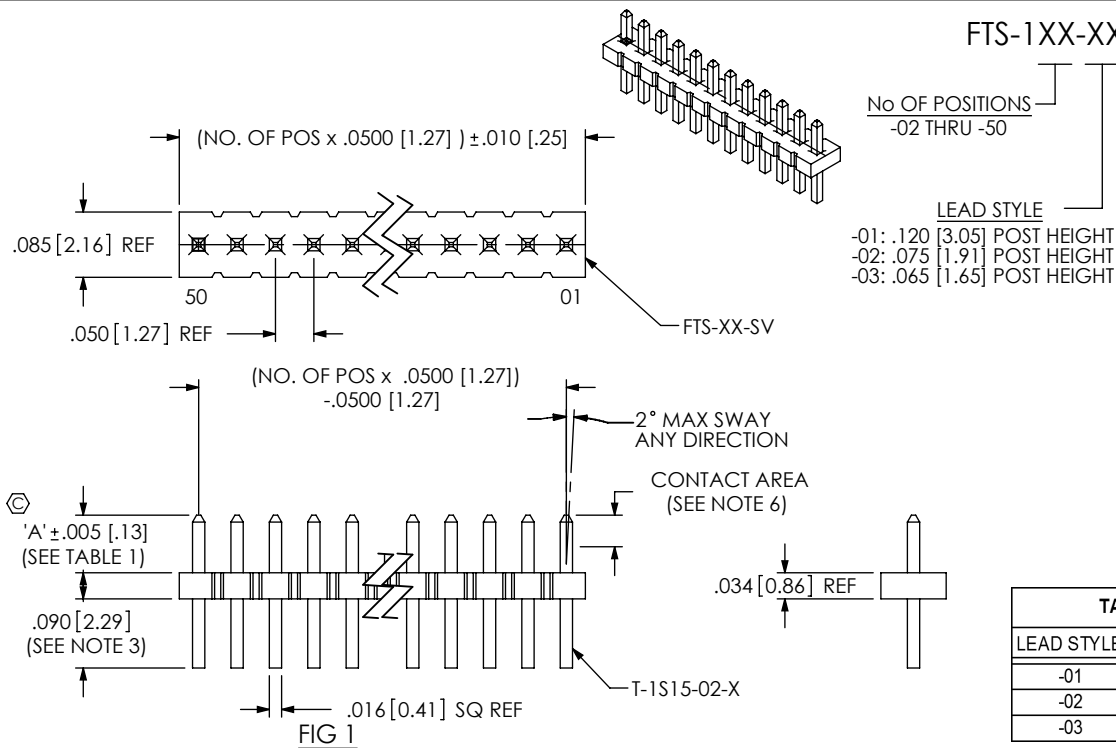


DO NOT
SCALE FROM
THIS PRINT



FTS-1XX-XX-X-XX

No OF POSITIONS
-02 THRU -50

LEAD STYLE

-01: .120 [3.05] POST HEIGHT
-02: .075 [1.91] POST HEIGHT
-03: .065 [1.65] POST HEIGHT

TAIL OPTION

-S: SINGLE ROW THROUGH HOLE
(SEE FIG 1)

-SV: SINGLE ROW VERTICAL SURFACE MOUNT
(SEE FIG 2)

[W]

PLATING SPECIFICATION

-L: 10μ" LIGHT SELECTIVE GOLD IN CONTACT AREA,
MATTE TIN ON TAIL
-F: 3μ" FLASH SELECTIVE GOLD IN CONTACT AREA,
MATTE TIN ON TAIL
-H: 30μ" HEAVY GOLD IN CONTACT AREA,
3μ" GOLD ON TAIL
-S: 30μ" SELECTIVE GOLD IN CONTACT AREA,
MATTE TIN ON TAIL

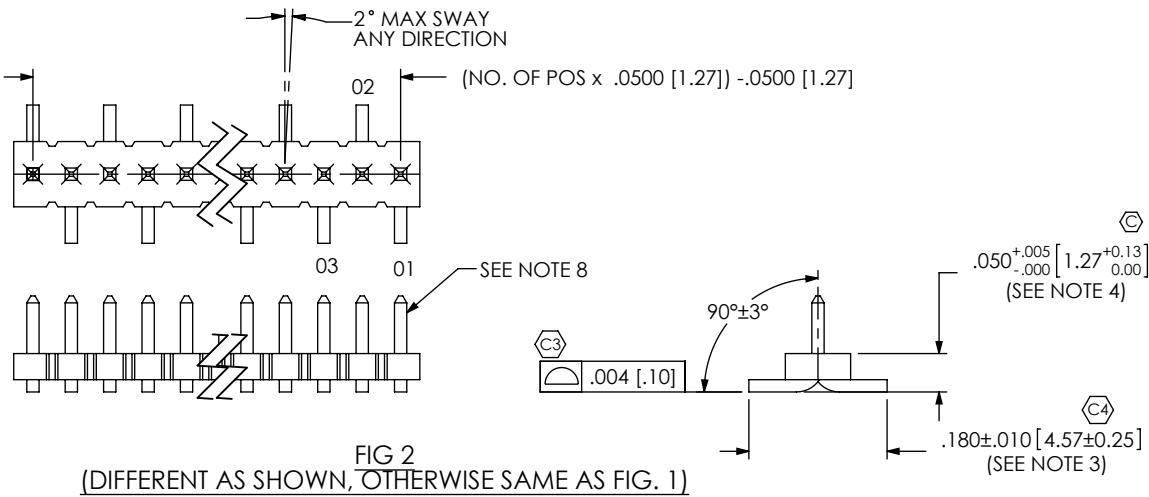
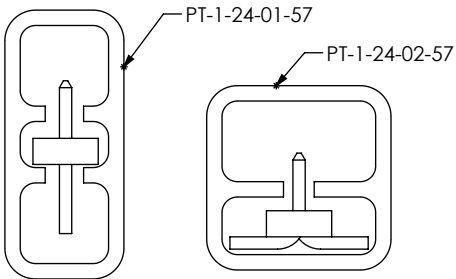


FIG 3
(SEE NOTE 5)

TAIL OPTION	TUBE	PLUG
-S	PT-1-24-01-57	TP-30
-SV	PT-1-24-02-57	TP-12



NOTES:

1. Ⓢ REPRESENTS A CRITICAL DIMENSION.
2. PARTS MAY BE CUT TO POSITION.
3. SHEAR TAILS TO DIMENSION SHOWN.
4. MEASURED AT BEND RADIUS, NOT AT END OF PIN.
5. TUBE ONLY -05 THROUGH -50 POSITIONS; LAYER PACKAGE -02 THROUGH -04 POSITIONS
6. GOLD PLATING TO BE ON POST, TIN PLATING TO BE ON TAIL.
7. MAXIMUM CUT FLASH: .015 [.38]
8. USE T-1S26-03-X FOR MACHINE FILL AND T-1S15-03-X FOR HAND FILL.
9. MINIMUM PIN RETENTION: .5 LB
10. FILL BODY SO THAT THE LEAD IN ON THE CORE IS ON THE TAIL SIDE.

UNLESS OTHERWISE SPECIFIED,
DIMENSIONS ARE IN INCHES.
TOLERANCES ARE:
DECIMALS ANGLES
.XX: ±.01 [.3] 2°
.XXX: ±.005 [.13]
.XXXX: ±.0020 [.051]

PROPRIETARY NOTE

THIS DOCUMENT CONTAINS INFORMATION
CONFIDENTIAL AND PROPRIETARY TO
SAMTEC, INC. AND SHALL NOT BE REPRODUCED
OR TRANSFERRED TO OTHER DOCUMENTS OR
DISCLOSED TO OTHERS OR USED FOR ANY
PURPOSE OTHER THAN THAT WHICH IT WAS
OBTAINED WITHOUT THE EXPRESSED WRITTEN
CONSENT OF SAMTEC, INC.

MATERIAL: DO NOT SCALE DRAWING
INSULATOR: LCP, UL 94 VO
COLOR: BLACK
TERMINAL: PHOS BRONZE

SHEET SCALE: 5:1

DESCRIPTION:
.050 C.L. LOW PROFILE TERMINAL STRIP ASSEMBLY

DWG. NO. FTS-1XX-XX-X-XX

BY: BRATCHER 6-8-95 SHEET 1 OF 1

Mouser Electronics

Authorized Distributor

Click to View Pricing, Inventory, Delivery & Lifecycle Information:

[Samtec:](#)

[FTS-150-01-S-S](#) [FTS-102-01-S-SV](#)