

DO NOT
SCALE FROM
THIS PRINT

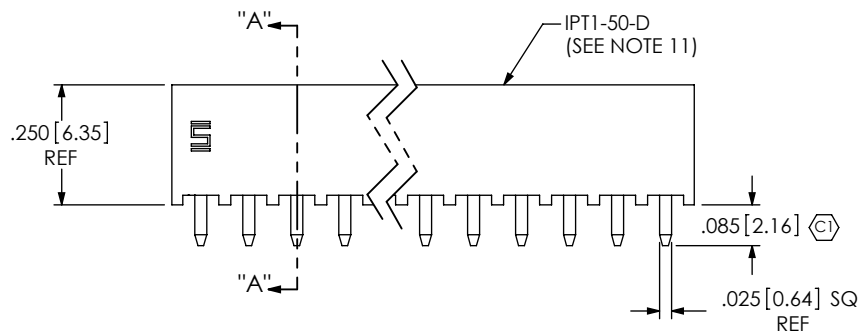
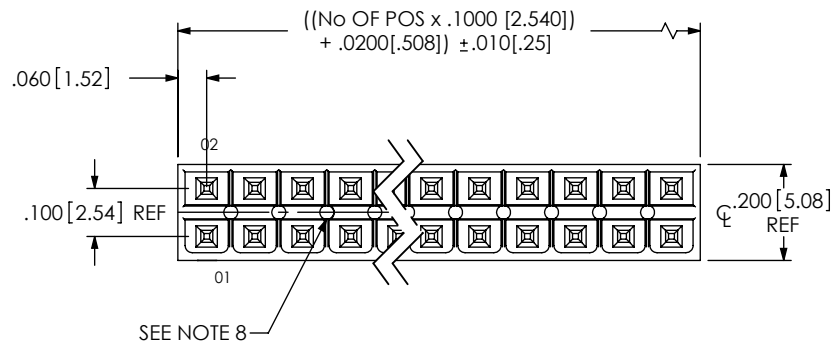


FIG. 1
(IPT1-150-01-XX-D-XXX SHOWN)

IPT1-1XX-XX-XX-D-XXX

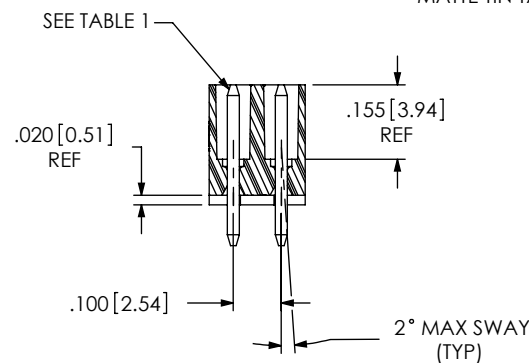
No OF POS PER ROW
-02 THRU -50

LEAD STYLE
SEE TABLE 1, SHEET 2

OPTION
(SEE NOTE 11)
-POL: POSITION #1 REMOVED
(USE IPT1-XX-D-P)
-FL: FRICTION LOCK [POS -05 THRU -25]
(USE IPT1-XX-D-FL-X & T-1S64-XX-X)

ROW SPECIFICATION
(SEE NOTE 11)
-D: DOUBLE (USE IPT1-XX-D-XX-X)

PLATING SPECIFICATION
-S: SELECTIVE, 30 Au / 50 Ni MIN ON CONTACT,
MATTE TIN TAIL
-SM: SELECTIVE, 30 Au / 50 Ni MIN ON CONTACT,
MATTE TIN TAIL
-L: LIGHT SELECTIVE, 10 Au / 50 Ni MIN ON CONTACT,
MATTE TIN TAIL

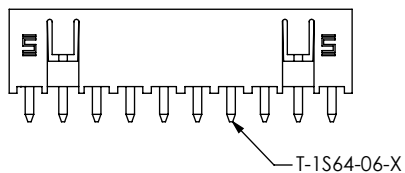


SECTION "A"-"A"

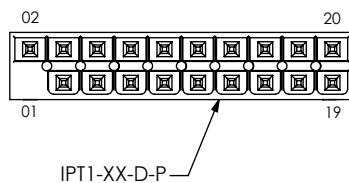
NOTES:

1. C REPRESENTS A CRITICAL DIMENSION.
2. MAXIMUM ALLOWABLE CUT FLASH: .010 [2.5].
3. MINIMUM TERMINAL PUSH OUT FORCE: 2 lbs.
4. MAXIMUM VARIATION BETWEEN PIN ROWS: .005 [13].
5. "END WALLS" AFTER CUTTING SHOULD BE .015+/- .003 [38+/- .08].
6. PARTS TO BE BULK PACKAGED.
7. ALL DIMENSIONS TO BE ABOUT CENTERLINE WITHIN +/- .005 [13].
8. PRESENCE OF VOIDS IS OPTIONAL AND PATTERN TO WHICH THEY OCCUR IS VARIABLE.
9. -T PLATING OPTION AVAILABLE FOR EXISTING CUSTOMERS ONLY.
10. NOTE DELETED.
11. STANDARD BODIES CAN BE CUT TO POSITION.
FOR -POL & -FL OPTIONS, BODIES MUST BE MOLDED TO POSITION.

-FL: FRICTION LOCK OPTION
(IPT1-110-01-X-D-FL SHOWN)



-POL: POLARIZED OPTION
(IPT1-110-01-X-D-POL SHOWN)



UNLESS OTHERWISE SPECIFIED,
DIMENSIONS ARE IN INCHES.

TOLERANCES ARE:
DECIMALS ANGLES
.XX: ± .01 [3] ± 2°
.XXX: ± .005 [13]
.XXXX: ± .0020 [51]

PROPRIETARY NOTE

THIS DOCUMENT CONTAINS INFORMATION
CONFIDENTIAL AND PROPRIETARY TO
SAMTEC, INC. AND SHALL NOT BE REPRODUCED
OR TRANSFERRED TO OTHER DOCUMENTS OR
DISCLOSED TO OTHERS OR USED FOR ANY
PURPOSE OTHER THAN THAT WHICH IT WAS
OBTAINED WITHOUT THE EXPRESSED WRITTEN
CONSENT OF SAMTEC, INC.

MATERIAL: DO NOT SCALE DRAWING
INSULATOR: LCP, UL 94 VO, COLOR: BLACK
CONTACT: PHOS BRONZE, 510, 3/4 HARD

SHEET SCALE: 1:0.4

samtec

520 PARK EAST BLVD, NEW ALBANY, IN 47150
PHONE: 812-944-6733 FAX: 812-948-5047
e-Mail: info@SAMTEC.com code 55322

DESCRIPTION:
.100 DOUBLE ROW SHROUDED TERMINAL ASSEMBLY

DWG. NO.
IPT1-1XX-XX-XX-D-XXX

BY: DEAN P 11-05-2002 SHEET 1 OF 2

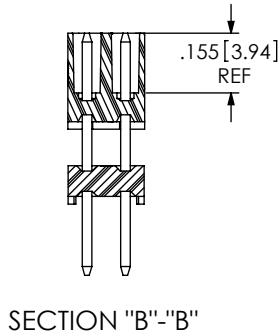
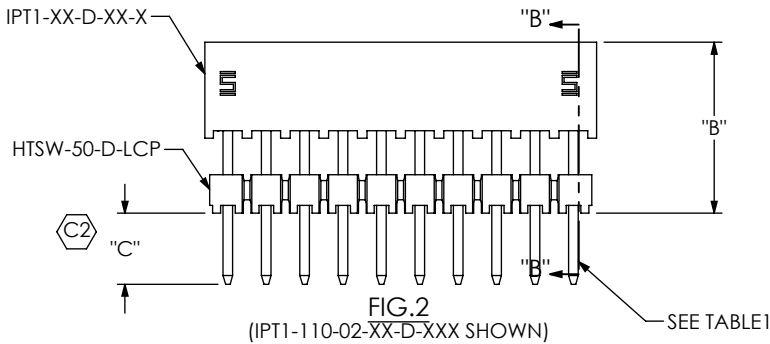


TABLE 1		BOARD STACK HEIGHT WHEN MATED WITH IPS1	TERMINAL	"C"
LEADSTYLE	"B"			
-01	N/A	N/A	T-1S6-21-X-2	
-02	.366[9.30]	.551[14.00]	T-1S6-26-X-2	.104[2.64]
-03	.445[11.30]	.630[16.00]	T-1S6-08-X-2	.085[2.16]
-04	.484[12.30]	.669[17.00]	T-1S6-24-X-2	.106[2.69]
-05	.563[14.30]	.748[19.00]	T-1S6-27-X-2	.097[2.46]
-06	.602[15.30]	.787[20.00]	T-1S6-23-X-2	.093[2.35]
-07	.799[20.30]	.984[25.00]	T-1S6-28-X-2	.091[2.31]
-08	.996[25.30]	1.181[30.00]	T-1S6-29-X-2	.094[2.39]
-09	1.193[30.30]	1.378[35.00]	T-1S6-30-X-2	.097[2.46]

PROPRIETARY NOTE

THIS DOCUMENT CONTAINS INFORMATION
CONFIDENTIAL AND PROPRIETARY TO
SAMTEC, INC. AND SHALL NOT BE REPRODUCED
OR TRANSFERRED TO OTHER DOCUMENTS OR
DISCLOSED TO OTHERS OR USED FOR ANY
PURPOSE OTHER THAN THAT WHICH IT WAS
OBTAINED WITHOUT THE EXPRESSED WRITTEN
CONSENT OF SAMTEC, INC.

DO NOT SCALE DRAWING

SHEET SCALE: 2:1

520 PARK EAST BLVD, NEW ALBANY, IN 47150
PHONE: 812-944-6733 FAX: 812-948-5047
e-Mail info@SAMTEC.com code 55322

DESCRIPTION:
.100 DOUBLE ROW SHROUDED TERMINAL ASSEMBLY

DWG. NO.
IPT1-1XX-XX-XX-D-XXX

BY: DEAN P 11-05-2002 SHEET 2 OF 2

Mouser Electronics

Authorized Distributor

Click to View Pricing, Inventory, Delivery & Lifecycle Information:

Samtec:

[IPT1-118-01-S-D](#) [IPT1-113-01-L-D](#) [IPT1-103-02-S-D](#) [IPT1-109-01-L-D](#) [IPT1-113-06-L-D](#) [IPT1-114-01-L-D](#) [IPT1-105-01-L-D-FL](#) [IPT1-103-02-L-D](#) [IPT1-104-02-L-D](#) [IPT1-107-02-L-D](#) [IPT1-112-08-L-D](#)