

## REVISION EC

DO NOT  
SCALE FROM  
THIS PRINT

## NOTES:

1. MINIMUM PUSHOUT FORCE TO BE 12 OZ RETENTION FOR CONTACTS AND WELD TABS.
2. COPLANARITY: .004[.10] = POS 02 THRU 26  
.006[.15] = POS 27 THRU 50
3. NOTE DELETED.
4. Ⓢ REPRESENTS A CRITICAL DIMENSION.
5. [ ] DIMENSIONS ARE IN MILLIMETERS.
6. MEASURED FROM BEND.
7. DIMENSION CHANGED PER REVISION AD.  
CONTACT ENGINEERING FOR INFORMATION.
8. SIDES OF PLASTIC BODIES ON ALL LEAD STYLES EXCEPT  
THE -01 & -02 WILL BE SOLID, NOT RIBBED.
9. MEASURE FROM TIPS OF PIN.
10. NOTE DELETED.
11. .003[.08] MAXIMUM TERMINAL BURR.
12. .005 MAXIMUM HEIGHT VARIATION BETWEEN ANY TWO PINS.
13. MINIMUM LOCKING CLIP RETENTION TO BE 8 OZS.
14. THIS FEATURE ONLY PRESENT ON -01 & -02 LEAD STYLES.
15. AVAILABLE IN -05, -07, -10, -15, -20, -25 & -30 POS. ONLY.
16. DUE TO THE HIGH AMOUNT OF INSERTION FORCE NEEDED, THE -LC OPTION IS NOT  
COMPATIBLE WITH AUTO PLACEMENT. SAMTEC RECOMMENDS MANUAL PLACEMENT  
FOR ALL ASSEMBLIES WITH THE -LC OPTION.

C1

EC

TFM-1XX-XX-XXX-X-XXX

## NO OF POSITIONS

- LEAD STYLE -01: (-02 THRU -50 ALL  
POSITIONS AVAILABLE)  
LEAD STYLE -02: (-02 THRU -50 ALL  
POSITIONS AVAILABLE)  
ALL OTHER LEAD STYLES: (-5 THRU -50 MULTIPLES OF 5)  
LEAD STYLES -11, -12 POS 12, 16, 17 ALSO AVAILABLE  
LEAD STYLES -21, -22, -31, -32  
POS 12 AND 13 ALSO AVAILABLE

## LEAD STYLE

- | THROUGH HOLE          | SURFACE MOUNT    |
|-----------------------|------------------|
| -01, -03 (SEE FIG. 1) | -02 (SEE FIG. 2) |
| -11, -13 (SEE FIG. 1) | -12 (SEE FIG. 2) |
| -21, -23 (SEE FIG. 1) | -22 (SEE FIG. 2) |
| -31 (SEE FIG. 1)      | -32 (SEE FIG. 2) |

## PLATING SPECIFICATION

- S: SELECTIVE, 30 Au / 50 Ni MIN ON CONTACT,  
MATTE TIN TAIL  
-L: LIGHT SELECTIVE, 15 Au / 50 Ni MIN ON  
CONTACT, MATTE TIN TAIL  
-F: FLASH GOLD, 3 Au / 50 Ni MIN ON CONTACT,  
MATTE TIN TAIL  
-H: HEAVY GOLD, 30 Au / 50 Ni MIN ON  
CONTACT, 3 Au / 50 Ni MIN ON TAIL  
-SM: SELECTIVE, 30 Au / 50 Ni MIN ON CONTACT,  
MATTE TIN TAIL  
-LM: LIGHT SELECTIVE, 15 Au / 50 Ni MIN ON  
CONTACT, MATTE TIN TAIL  
-FM: FLASH GOLD, 3 Au / 50 Ni MIN ON CONTACT,  
MATTE TIN TAIL  
-STL: SELECTIVE, 30 Au / 50 Ni MIN ON CONTACT,  
TIN/LEAD (90/10+/-5%) TAIL

## BODY SPECIFICATION

- D: DOUBLE ROW

## OPTION

- A: ALIGNMENT PIN (USE TFM-XX-D-XX-A,  
SEE TABLE 1) (SEE FIG. 8 SHEET 3)  
(NOT AVAILABLE FOR -RA OR -REX)  
-LC: LOCKING CLIP (USE LC-05-TM) (SEE NOTE 16)  
(NOT AVAILABLE FOR -RA OR -REX)  
(SEE FIG. 10 SHEET 3) (SEE NOTE 13)  
-P: PICK AND PLACE PAD (USE PPP-04)  
(AVAILABLE IN ALL POSITIONS  
EXCEPT -05 WITH -WT)  
(NOT AVAILABLE FOR -RA OR -REX,  
SEE FIG. 7 SHEET 3)  
-RA: RIGHT ANGLE  
(AVAILABLE ONLY IN LEAD STYLE: -01  
SEE FIG. 5, SHEET 2)  
-TR: TAPE AND REEL (SEE FIG. 4, SHEET 5)  
-SA: STAKED ALIGNMENT PIN (SEE FIG. 9,  
SHEET 3) (NOT AVAILABLE FOR  
-RA OR -RE)  
-K: POLYIMIDE FILM (SEE FIG. 3)  
(NOT AVAILABLE FOR -RA OR -REX)  
-WT: WELD TABS (USE WT-25-XX-T)  
(AVAILABLE ON -01 AND -02 LEAD  
STYLES ONLY) (SEE FIG. 6 SHEET 2)  
(NOT AVAILABLE WITH -A, -LC,  
-RA, OR -SA OPTIONS)  
-RE1: RIGHT ANGLE ELEVATED .062 PCB  
(USE TFM-XX-D-01-RE, NOT AVAILABLE  
WITHOUT -WT, AVAILABLE IN LEAD  
STYLE -01 ONLY, -05 THRU -50 POS)  
(SEE FIG. 11, SHEET 4) (SEE NOTE 15)  
-RE2: RIGHT ANGLE ELEVATED .093 PCB  
(USE TFM-XX-D-01-RE, NOT AVAILABLE  
WITHOUT -WT, AVAILABLE IN LEAD  
STYLE -01 ONLY, -05 THRU -50 POS)  
(SEE FIG. 11, SHEET 4) (SEE NOTE 15)  
-SN: SOLDER NAIL FOR .062 BOARD  
(TFM-XX-D-01-SN AND WT-27-01-T)  
(SEE FIG. 12, SHT 3)  
(ONLY AVAILABLE WITH -02 LEAD STYLE)  
(NOT AVAILABLE WITH OPTIONS -A, -LC,  
-RA, -SA, -WT, -RE1 OR -RE2)  
-SN2: SOLDER NAIL FOR .093 BOARD  
(TFM-XX-D-01-SN AND WT-27-02-T)  
(SEE FIG. 12, SHT 3)  
(ONLY AVAILABLE WITH -02 LEAD STYLE)  
(NOT AVAILABLE WITH OPTIONS -A, -LC,  
-RA, -SA, -WT, -RE1 OR -RE2)

EC

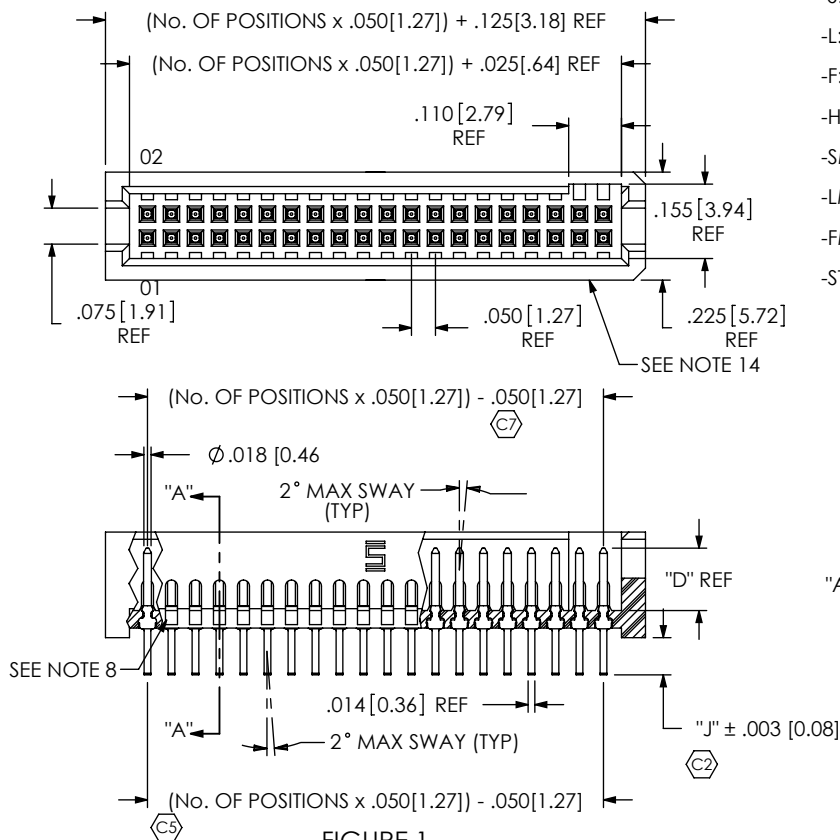
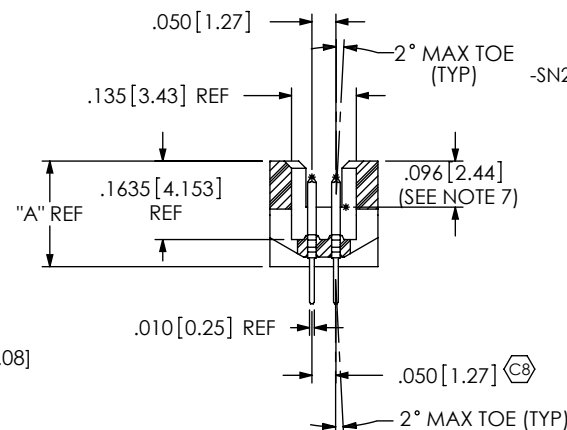


FIGURE 1  
THROUGH HOLE  
-01, -03, -11, -13, -21, -23, -31



## SECTION "A"-"A"

UNLESS OTHERWISE SPECIFIED,  
DIMENSIONS ARE IN INCHES.

TOLERANCES ARE:

DECIMALS

ANGLES

.XX: ±.01 [.3]

2°

.XXX: ±.005 [.13]

.XXXX: ±.0020 [.051]

## PROPRIETARY NOTE

THIS DOCUMENT CONTAINS INFORMATION  
CONFIDENTIAL AND PROPRIETARY TO  
SAMTEC, INC. AND SHALL NOT BE REPRODUCED  
OR TRANSFERRED TO OTHER DOCUMENTS OR  
DISCLOSED TO OTHERS OR USED FOR ANY  
PURPOSE OTHER THAN THAT WHICH IT WAS  
OBTAINED WITHOUT THE EXPRESSED WRITTEN  
CONSENT OF SAMTEC, INC.

## MATERIAL:

DO NOT SCALE DRAWING

SHEET SCALE: 2.5:1

INSULATOR:  
LCP, UL 94-VO  
COLOR: BLACK

TERMINAL: PHOSPHOR BRONZE

F:\DWG\MISC\MKTG\TFM-1XX-XX-XXX-X-XXX-MKT.SLDDRW

## DESCRIPTION:

.050 X .050 TERMINAL STRIP

## DWG. NO.

TFM-1XX-XX-XXX-X-XXX

BY: B RAY

7-10-2007

SHEET 1 OF 5

**samtec**

520 PARK EAST BLVD, NEW ALBANY, IN 47150  
PHONE: 812-944-6733 FAX: 812-948-5047  
e-Mail: info@SAMTEC.com code 55322

IN-PROCESS

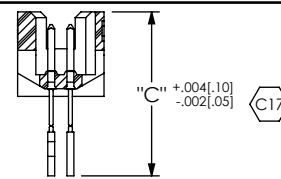


FIGURE 2  
SURFACE MOUNT  
-02, -12, -22, -32  
(DIFFERENT AS SHOWN, OTHERWISE SAME AS FIG. 1)

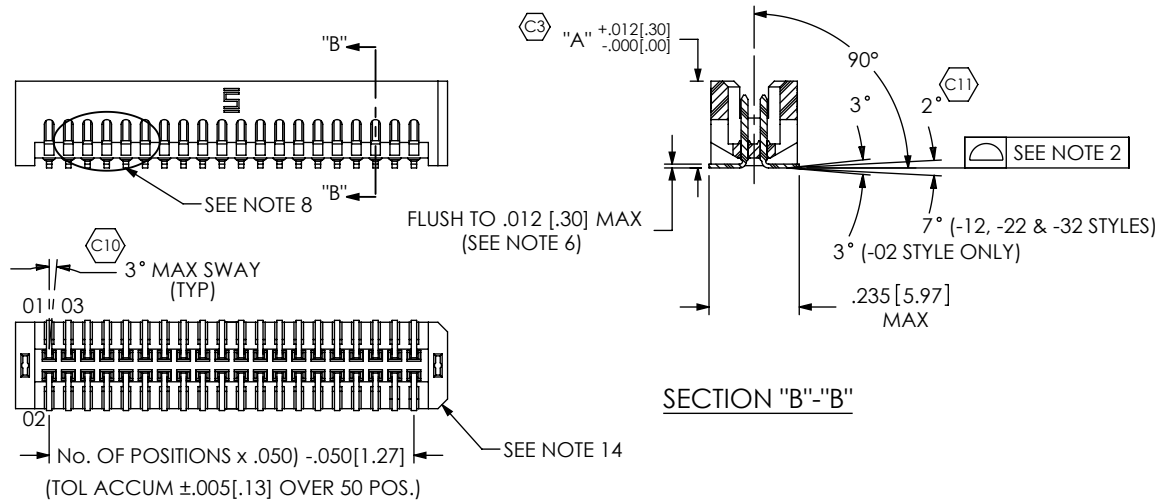


FIGURE 3  
-K: POLYIMIDE FILM PAD

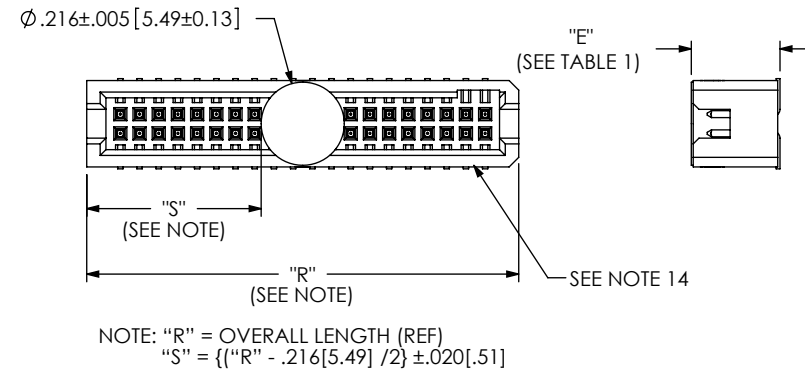


FIGURE 5  
-RA OPTION  
DIFFERENT AS SHOWN, OTHERWISE SAME AS FIG. 1

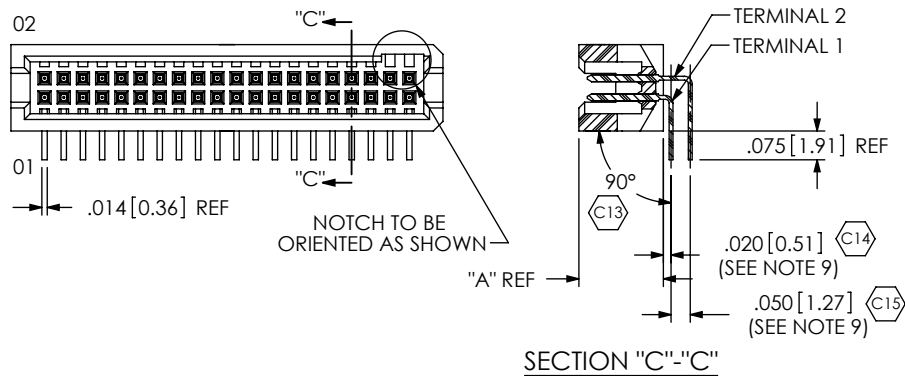
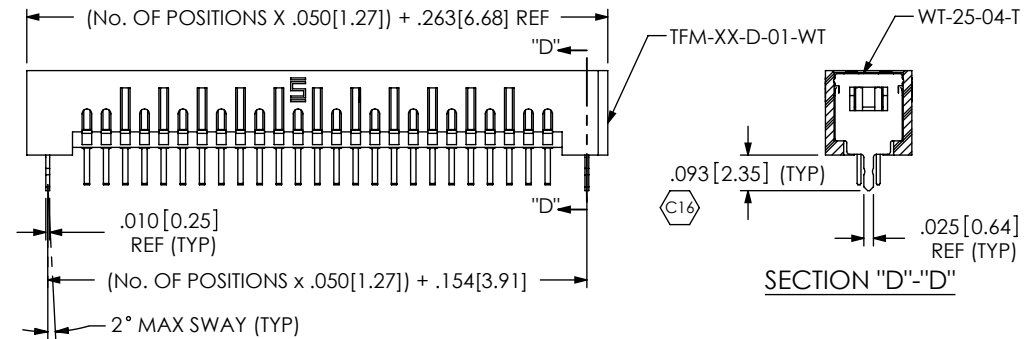
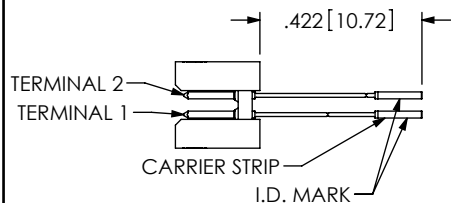


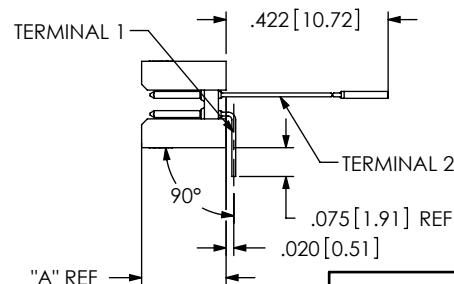
FIGURE 6  
-WT OPTION  
DIFFERENT AS SHOWN, OTHERWISE SAME AS FIG. 1



IN-PROCESS 1  
(ORIENT I.D. MARK AS SHOWN)  
(FOR -RA OPTION ONLY)



IN-PROCESS 2



PROPRIETARY NOTE

THIS DOCUMENT CONTAINS INFORMATION  
CONFIDENTIAL AND PROPRIETARY TO  
SAMTEC, INC. AND SHALL NOT BE REPRODUCED  
OR TRANSFERRED TO OTHER DOCUMENTS OR  
DISCLOSED TO OTHERS OR USED FOR ANY  
PURPOSE OTHER THAN THAT WHICH IT WAS  
OBTAINED WITHOUT THE EXPRESSED WRITTEN  
CONSENT OF SAMTEC, INC.

DO NOT SCALE DRAWING

SHEET SCALE: 2:1

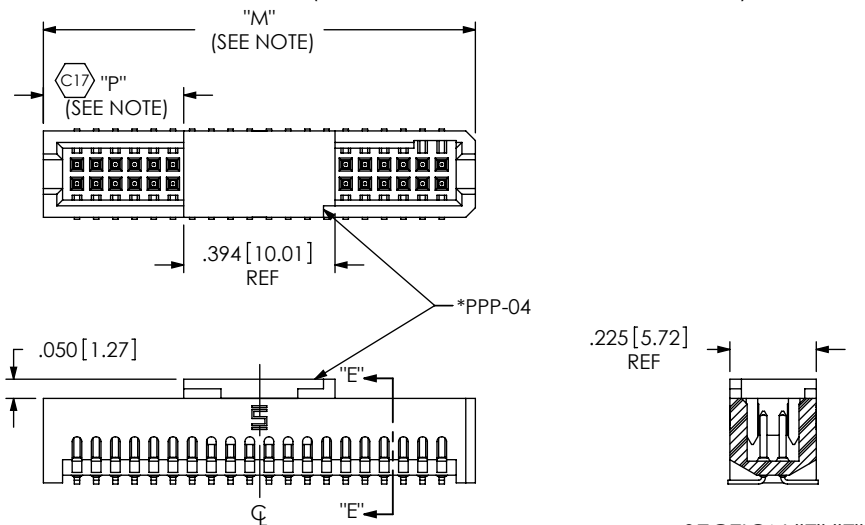
**samtec**

520 PARK EAST BLVD, NEW ALBANY, IN 47150  
PHONE: 812-944-6733 FAX: 812-948-5047  
e-Mail: info@SAMTEC.com code 55322

DESCRIPTION:  
.050 X .050 TERMINAL STRIP

DWG. NO.  
TFM-1XX-XX-XXX-X-XXX

BY: B RAY 7-10-2007 SHEET 2 OF 5

FIGURE 7  
-P OPTIONDIFFERENT AS SHOWN, OTHERWISE SAME AS FIG. 1  
(PAD TO BE POSITIONED ON C.L. AS SHOWN)

NOTE: "M" = (No. OF POSITIONS X .050[1.27]) + .125[3.18] (REF)  
 WITH -WT "M" = (No. OF POSITIONS X .050[1.27]) + .263[6.68] (REF)  
 "P" = {("M" - .394[10.01]) / 2} ±.020[.51]

\* NOTCH ON PAD TO BE ON SAME END  
 AS THE NOTCH IN THE TFM BODY

SECTION "E"-"E"

FIGURE 8  
-A OPTION

DIFFERENT AS SHOWN, OTHERWISE SAME AS FIG. 1

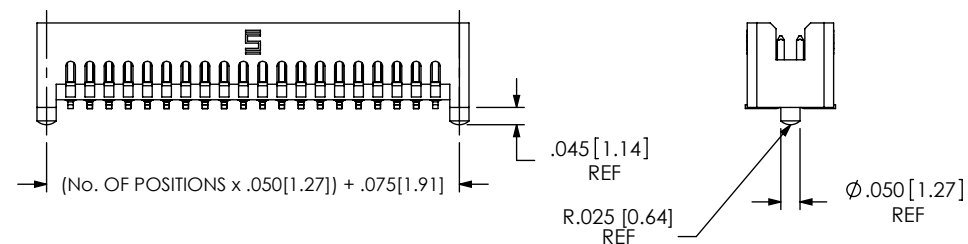
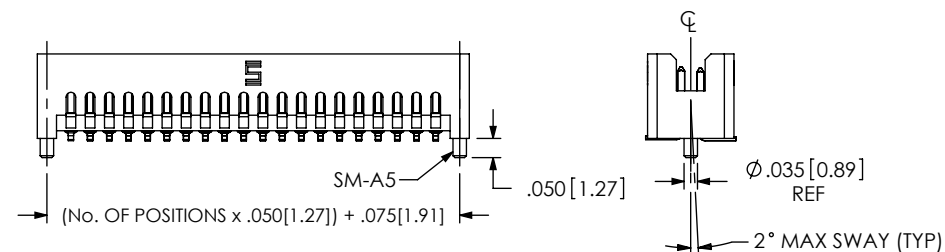
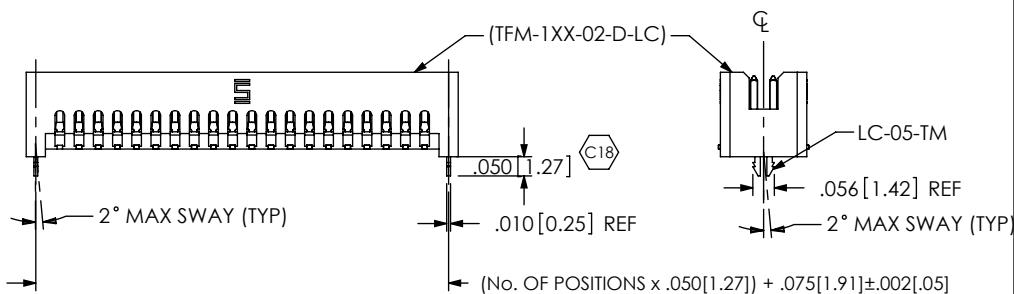
FIGURE 9  
-SA OPTION: STAKED ALIGNMENT PIN  
DIFFERENT AS SHOWN, OTHERWISE SAME AS FIG. 1FIGURE 10  
-LC OPTION  
DIFFERENT AS SHOWN, OTHERWISE SAME AS FIG. 1  
(NOT AVAILABLE ON -RA)

FIGURE 12

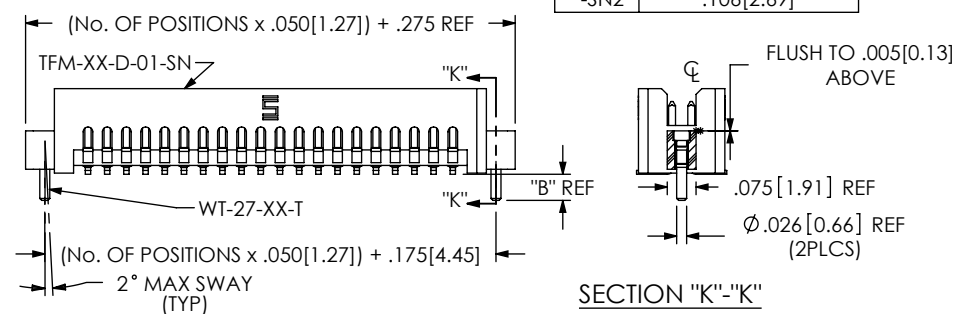
-SNX: SOLDER NAIL  
DIFFERENT AS SHOWN, OTHERWISE SAME AS FIG. 1

TABLE 4

OPTION	"B"
-SN	.071 [1.80]
-SN2	.106 [2.69]

FLUSH TO .005[0.13]  
 ABOVE

Ø.075 [1.91] REF  
 Ø.026 [0.66] REF  
 (2PLCS)

SECTION "K"-"K"

## PROPRIETARY NOTE

THIS DOCUMENT CONTAINS INFORMATION  
 CONFIDENTIAL AND PROPRIETARY TO  
 SAMTEC, INC. AND SHALL NOT BE REPRODUCED  
 OR TRANSFERRED TO OTHER DOCUMENTS OR  
 DISCLOSED TO OTHERS OR USED FOR ANY  
 PURPOSE OTHER THAN THAT WHICH IT WAS  
 OBTAINED WITHOUT THE EXPRESSED WRITTEN  
 CONSENT OF SAMTEC, INC.

DO NOT SCALE DRAWING

SHEET SCALE: 2:1

**samtec**

520 PARK EAST BLVD, NEW ALBANY, IN 47150  
 PHONE: 812-944-6733 FAX: 812-948-5047  
 e-Mail: info@SAMTEC.com code 55322

DESCRIPTION:	.050 X .050 TERMINAL STRIP		
DWG. NO.	TFM-1XX-XX-XXX-X-XXX		
BY: B RAY	7-10-2007	SHEET 3 OF 5	

FIGURE 11  
-REX: RIGHT ANGLE ELEVATED  
TFM-120-XX-XXX-D-RE2 SHOWN  
DIFFERENT AS SHOWN, OTHERWISE SAME AS FIG. 1

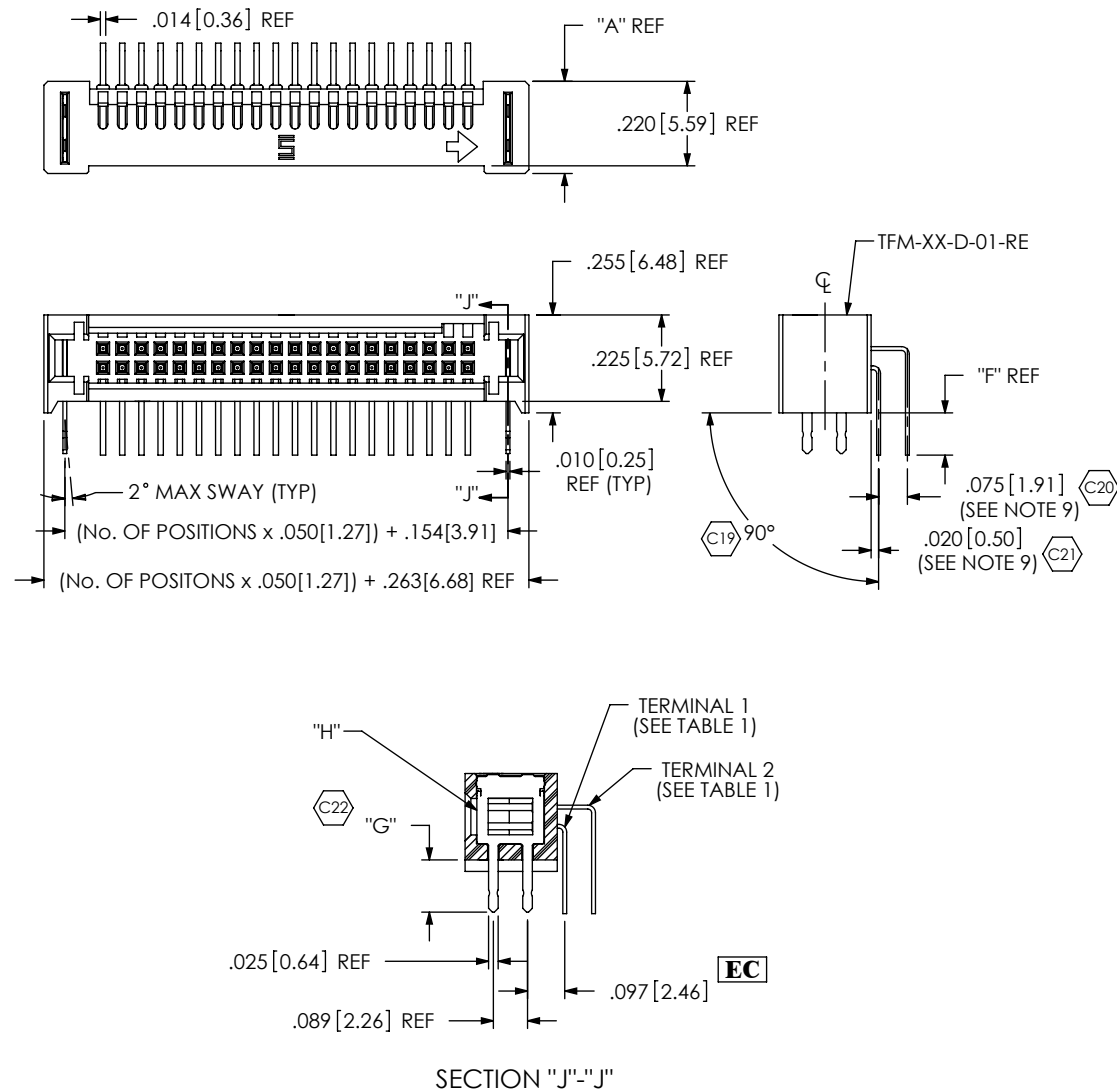
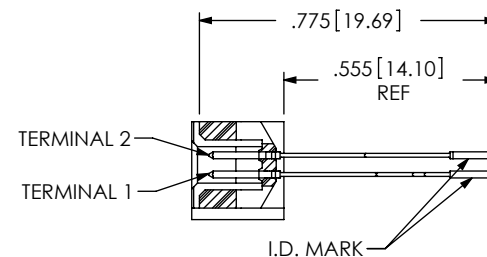
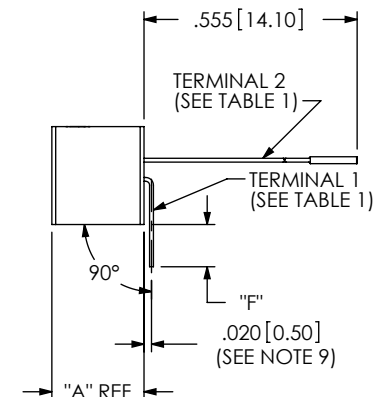


TABLE 3			
LEAD STYLE	"F"	"G"	"H"
-01-RE1	.078 [1.98]	.074 [1.88]	WT-25-05-T
-01-RE2	.110 [2.79]	.106 [2.69]	WT-25-06-T

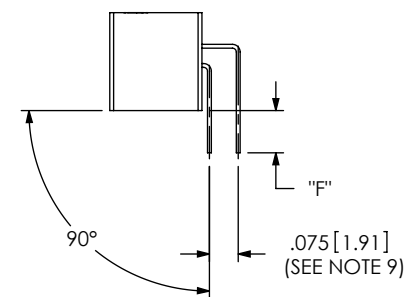
IN-PROCESS 1  
(ORIENT I.D. MARK AS SHOWN)  
(FOR -RA OPTION ONLY)



IN-PROCESS 2



IN-PROCESS 3



PROPRIETARY NOTE

THIS DOCUMENT CONTAINS INFORMATION  
CONFIDENTIAL AND PROPRIETARY TO  
SAMTEC, INC. AND SHALL NOT BE REPRODUCED  
OR TRANSFERRED TO OTHER DOCUMENTS OR  
DISCLOSED TO OTHERS OR USED FOR ANY  
PURPOSE OTHER THAN THAT WHICH IT WAS  
OBTAINED WITHOUT THE EXPRESSED WRITTEN  
CONSENT OF SAMTEC, INC.

DO NOT SCALE DRAWING

SHEET SCALE: 2:1

**samtec**

520 PARK EAST BLVD., NEW ALBANY, IN 47150  
PHONE: 812-944-6733 FAX: 812-948-5047  
e-Mail: info@SAMTEC.com code 55322

DESCRIPTION:

.050 X .050 TERMINAL STRIP

DWG. NO.

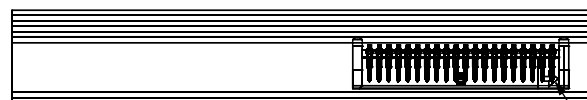
TFM-1XX-XX-XXX-X-XXX

BY: B RAY

7-10-2007

SHEET 4 OF 5

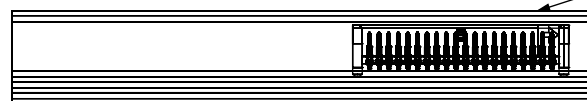
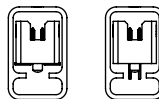
## PARTS TO BE PACKAGED IN TUBES AS SHOWN



LOADING DIRECTION ARROW



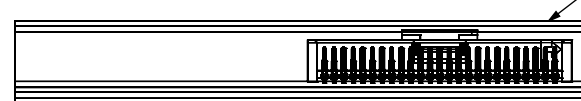
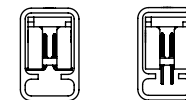
POLARIZATION NOTCH

PT-1-24-18-09  
(SEE TABLE 2)

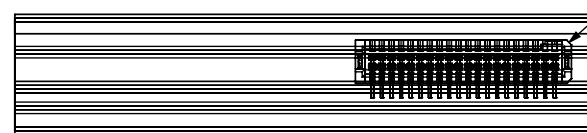
LOADING DIRECTION ARROW



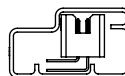
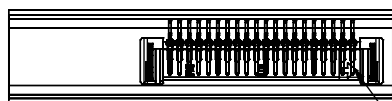
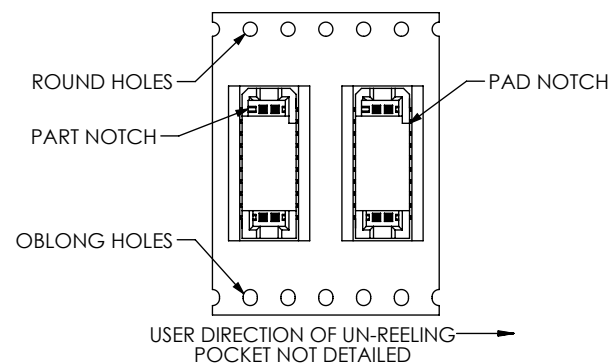
POLARIZATION NOTCH

PT-1-24-XX-09  
(SEE TABLE 2)

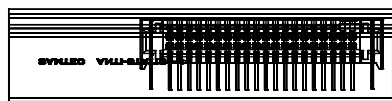
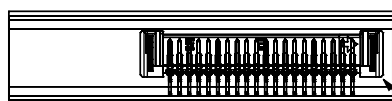
LOADING DIRECTION ARROW



POLARIZATION NOTCH

PT-1-24-05-17  
(SEE TABLE 2)FIGURE 4  
-TR: TAPE AND REEL

LOADING DIRECTION ARROW

PT-1-24-09F-109  
(SEE TABLE 2)

POLARIZATION NOTCH

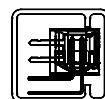


TABLE 2		
LEAD STYLE	PACKAGING TUBE	PLUG
-RA (ALL LEAD STYLES)	PT-1-24-5-17	TP-07
-REX	PT-1-24-09F-109	TP-29
-02, -02-A, -02-A-K, -02-LC	PT-1-24-01-09	TP-24
-12 (ALL OPTIONS), -22-K, -22, -22-A, -22-A-K, -22-LC, -22-LC-K	PT-1-24-04-09	TP-07
-02-A-P, -02-K, -02-LC-K, -02-LC-P, -02-P, -02-WT,A8	PT-1-24-18-09	TP-09
-01 (ALL OPTIONS), -11, -11-A, -11-LC, -11-K, -11-LC-K, -11-A-K		
-03 (ALL OPTIONS)		
-13, -13-A, -13-LC, -13-K, -13-LC-K, -13-A-K	PT-1-24-02-09	TP-07
-31-A-K, -31-A-P, -31-LC-P, -31-P, -32, -32-K, -32-A, -32-A-K,		
-32-A-P, -32-LC-K, -32-LC-P, -32-P, -32-LC		
-31, -21-P, -22-P, -31-LC, -21-A-P, -21-LC-P, -22-LC-P, -22-A-P, -31-A,	PT-1-24-05-09	TP-07
-13-P, -13-LC-P, -13-A-P, -21, -23, -23-P, -23-A-P,		
-11-P, -11-LC-P, -11-A-P, -21-K, -21-A, -21-LC, -21-A-K, -21-LC-K,	PT-1-24-20-09	TP-07
-23-K, -23-A, -23-A-K, -23-LC, -23-LC-K		

NOTE:  
PARTS TO BE PACKAGED WITH THE LOADING DIRECTION ARROW  
POINTED IN SAME DIRECTION AS THE ARROW ON TUBE.

## PROPRIETARY NOTE

THIS DOCUMENT CONTAINS INFORMATION  
CONFIDENTIAL AND PROPRIETARY TO  
SAMTEC, INC. AND SHALL NOT BE REPRODUCED  
OR TRANSFERRED TO OTHER DOCUMENTS OR  
DISCLOSED TO OTHERS OR USED FOR ANY  
PURPOSE OTHER THAN THAT WHICH IT WAS  
OBTAINED WITHOUT THE EXPRESSED WRITTEN  
CONSENT OF SAMTEC, INC.

DO NOT SCALE DRAWING

SHEET SCALE: 2:1

520 PARK EAST BLVD, NEW ALBANY, IN 47150  
PHONE: 812-944-6733 FAX: 812-948-5047  
e-Mail: info@SAMTEC.com code 55322

DESCRIPTION: .050 X .050 TERMINAL STRIP

DWG. NO. TFM-1XX-XX-XXX-X-XXX

BY: B RAY 7-10-2007 SHEET 5 OF 5

# Mouser Electronics

Authorized Distributor

Click to View Pricing, Inventory, Delivery & Lifecycle Information:

[Samtec:](#)

[TFM-150-02-S-D-SN](#) [TFM-110-12-SM-D-LC](#) [TFM-120-23-L-D-LC](#) [TFM-118-01-S-D-WT](#) [TFM-105-11-S-D-K](#)