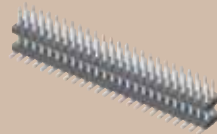




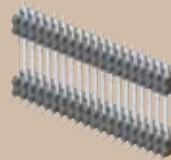
(1,27mm) .050"

FW SERIES

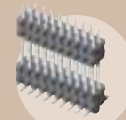
FW-25-03-G-D-163-120



FW-20-05-G-D-500-075



FW-10-05-G-D-400-090-A



# SMT MICRO BOARD STACKER

## SPECIFICATIONS

For complete specifications and recommended PCB layouts see [www.samtec.com?FW](http://www.samtec.com?FW)

### Insulator Material:

Black Liquid

Crystal Polymer

### Terminal Material:

Phosphor Bronze

### Plating:

Sn or Au over 50µ"

(1,27µm) Ni

### Current Rating:

1.75A @ 80°C ambient

### Operating Temp Range:

-55°C to +125°C

### RoHS Compliant:

Yes

### Processing:

#### Lead-Free Solderable:

Yes

#### SMT Lead Coplanarity:

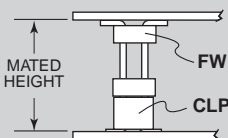
(0,10mm) .004" max (02-30)

(0,15mm) .006" max (31-50)



Mates with:  
CLP, FFSD, FLE

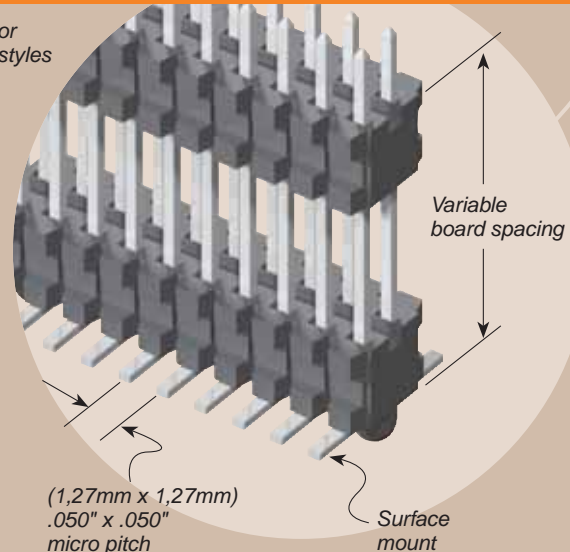
## APPLICATIONS



LEAD STYLE		MATED HEIGHT*
FW	CLP	
FW-XX-03-X-X-233-065	-02	(8,13) .320
FW-XX-03-X-X-303-065		(9,91) .390

\*Processing conditions will affect mated height.

Low profile or  
skyscraper styles



(1,27mm x 1,27mm)  
.050" x .050"  
micro pitch

Surface  
mount

1,27mm FW/CLP	Rated @ -3dB Insertion Loss
17,7mm Stack Height	
Single-Ended Signaling	3.0 GHz / 6.0 Gbps
Differential Pair Signaling	4.0 GHz / 8.0 Gbps
Performance data for other stack heights and complete test data available at <a href="http://www.samtec.com?FW">www.samtec.com?FW</a> or contact sig@samtec.com.	

## ALSO AVAILABLE

- Smaller stack heights.  
Call Samtec.

## TAPE & REEL AVAILABILITY

No tooling charges.  
Minimum order is the lesser of  
a full reel quantity or 125 pieces.  
Order any quantity above minimum.  
In-house design, manufacture.  
Quick turn-around.

Call Samtec for specifications  
and ordering information.

**Note:** This Series is  
non-standard, non-returnable.

FW	NO. PINS PER ROW	LEAD STYLE	PLATING OPTION	D	STACKER HEIGHT	POST HEIGHT	OPTION
	02 thru 50	Specify LEAD STYLE from chart	<b>-F</b> = Gold flash on post, Matte Tin on tail  <b>-L</b> = 10µ" (0,25µm) Gold on post, Matte Tin on tail  <b>-G</b> = 10µ" (0,25µm) Gold on post, Gold flash on tail		<b>-"XXX"</b> = Stacker Height (in inches)  Example: -250 = (6,35mm) .250"	<b>-"XXX"</b> = Post Height (in inches)  (1,65mm) .065" minimum  Example: -065 = (1,65mm) .065"	<b>-ES</b> = End Shroud (-075 post height only. Mate only with CLP.) (5,46mm) .215" to (15,49mm) .610" stacker height only 9 pins/row min.  <b>-EP</b> = End Shroud with Guide Post (-075 post height only. Mate only with CLP.) (5,46mm) .215" to (15,49mm) .610" stacker height only 9 pins/row min.  <b>-A</b> = Alignment Pin (3 positions min.) (5,46mm) .215" to (15,75mm) .620" stacker height only  <b>-P</b> = Pick & Place Pad (5 positions min.)  <b>-TR</b> = Tape & Reel (Post+Stacker Height = (17,46mm) .6875 max.)

LEAD STYLE	STACKER HEIGHT	STACKER + POST
-03	(5,46) .215 to .335 (8,51) .280 to .400	(7,11) .280 to .400 (10,16) .405 to .675
-05	(8,64) .340 to .610 (15,49) .405 to .675	(10,29) .405 to .675 (17,15) .405 to .675

Diagram 1: No. of positions x (1,27) .050. Dimensions: (3,42) .135, (1,27) .050, (0,41) .016 SQ, (2,51) .099, (2,92) .115, (1,19) .047.

Diagram 2: POST HEIGHT (1,65) .065 MIN. Dimensions: (4,27) .168, (4,76) .188, (3,05) .120, (1,91) .075 DIA, (0,89) .035 DIA, (0,86) .034.

Diagram 3: STACKER HEIGHT. Dimensions: (4,27) .168, (4,76) .188, (3,05) .120, (1,91) .075 DIA, (0,89) .035 DIA, (0,86) .034.

Diagram 4: -ES. Dimensions: (3,45) .136 x (5,08) .200, (4,06) .160, (0,76) .030.

Diagram 5: -P. Dimensions: (4,27) .168, (4,76) .188, (3,05) .120, (1,91) .075 DIA, (0,89) .035 DIA, (0,86) .034.

Diagram 6: -A. Dimensions: (4,27) .168, (4,76) .188, (3,05) .120, (1,91) .075 DIA, (0,89) .035 DIA, (0,86) .034.

Due to technical progress, all designs, specifications and components are subject to change without notice.

[WWW.SAMTEC.COM](http://WWW.SAMTEC.COM)

# Mouser Electronics

Authorized Distributor

Click to View Pricing, Inventory, Delivery & Lifecycle Information:

[Samtec:](#)

[FW-02-03-G-D-250-120](#) [FW-02-05-G-D-400-065](#)