

PTF-1XX-XX-X-D-XXX

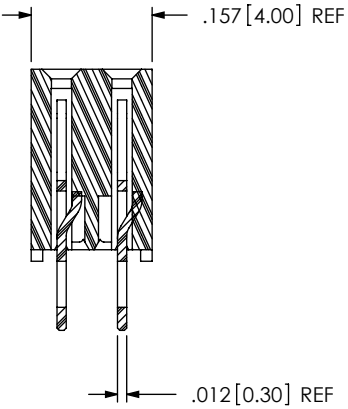
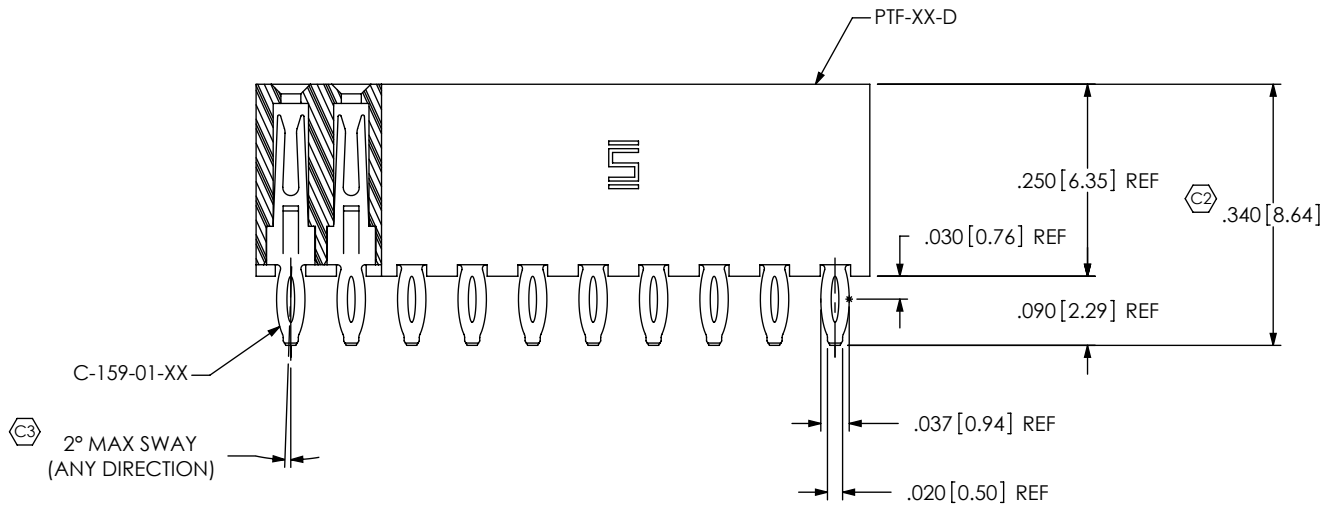
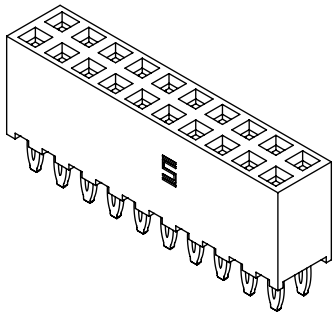
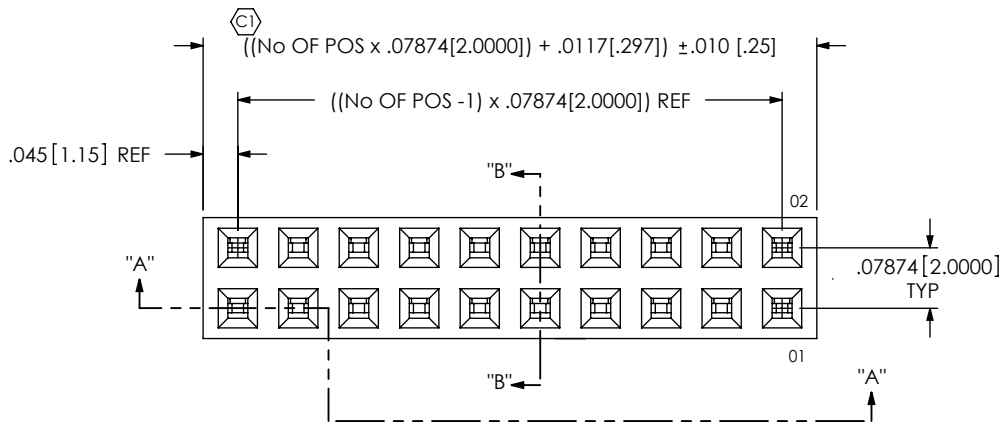
No OF POSITIONS
-02 THRU -50
(PER ROW)

LEAD STYLE
-01: USE C-159-01-XX
-03: USE C-159-03-XX

PLATING SPECIFICATION
-S: SELECTIVE GOLD
(USE C-159-XX-S)
-SM: SELECTIVE GOLD; MATTE TIN TAIL
(USE C-159-XX-S)
-L: LIGHT SELECTIVE GOLD; MATTE TIN TAIL
(USE C-159-XX-L)

POLARIZATION OPTION
-XXX INDICATES POSITION
(USE PK-07 TO POLARIZE)

ROW SPECIFICATION
-D: DOUBLE ROW
-01 (USE PTF-62-D)
-03 (USE PTF-62-D & PTF-50-D)



NOTES:

1. C1 REPRESENTS A CRITICAL DIMENSION.
2. MAXIMUM CUT FLASH: $.020 [.51]$.
3. MINIMUM CONTACT RETENTION: .5 LB PER PIN.
4. PARTS MAY BE CUT TO POS. ONE POS LOST PER CUT.
5. ALL POSITIONS TO BE LAYER PACKAGED.
6. MAX ALLOWABLE BOW $.0015$ " IN/IN.
7. NOTE DELETED.
8. USED FOR CUTTING PTFE BODY
9. PTFE BODY IS NOT TO BE MORE THAN $\pm .005[.13]$ FROM PLANE SET BY PTF BODY.

SECTION "A"-"A"

UNLESS OTHERWISE SPECIFIED,
DIMENSIONS ARE IN INCHES.
TOLERANCES ARE:
DECIMALS ANGLES
.XXX: $\pm .005 [.13]$ 2°
.XXXX: $\pm .0020 [.051]$
.XXXXX: $\pm .0020 [.051]$

PROPRIETARY NOTE
THIS DOCUMENT CONTAINS INFORMATION
CONFIDENTIAL AND PROPRIETARY TO
SAMTEC, INC. AND SHALL NOT BE REPRODUCED
OR TRANSFERRED TO OTHER DOCUMENTS OR
DISCLOSED TO OTHERS OR USED FOR ANY
PURPOSE OTHER THAN THAT WHICH IT WAS
OBTAINED WITHOUT THE EXPRESSED WRITTEN
CONSENT OF SAMTEC, INC.

samtec

520 PARK EAST BLVD, NEW ALBANY, IN 47150
PHONE: 812-944-6733 FAX: 812-948-5047
e-Mail: info@SAMTEC.com code: 55322

MATERIAL: DO NOT SCALE DRAWING SHEET SCALE: 4:1

INSULATOR: LCP
COLOR: BLACK
CONTACT: PHOS BRONZE

DESCRIPTION:

2mm PRESS FIT SOCKET ASSEMBLY

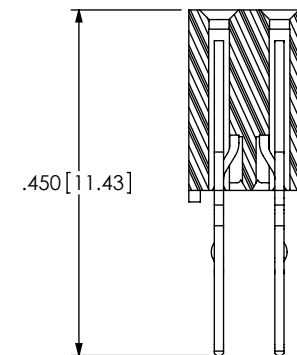
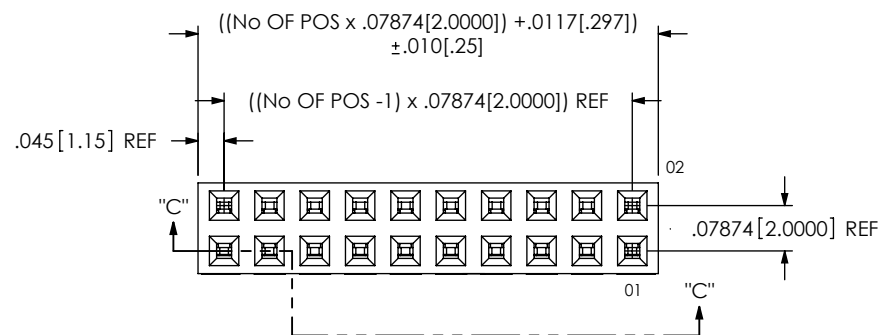
DWG. NO.

PTF-1XX-XX-X-D-XXX

BY: KEVIN B

4/3/2000

SHEET 1 OF 2



IN-PROCESS

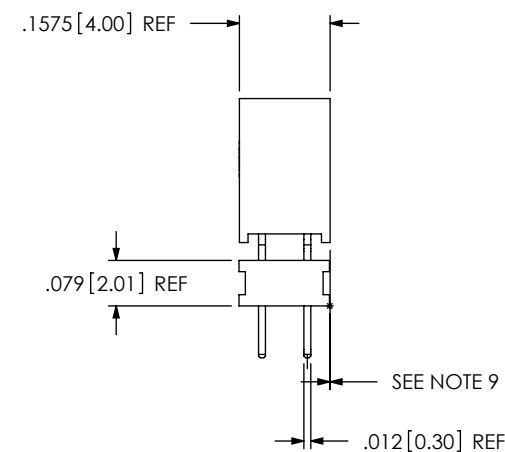
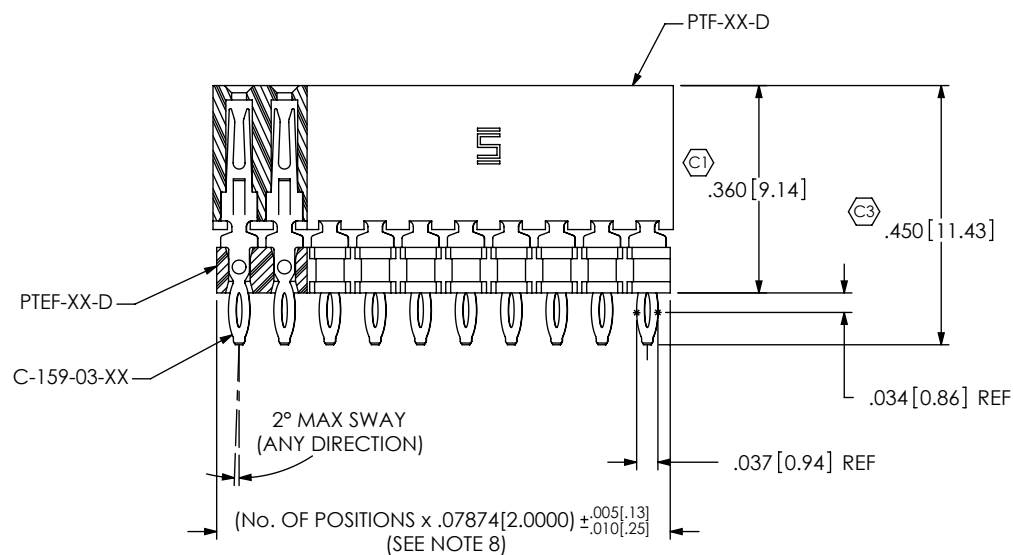


FIG. 2
-03 LEAD STYLE
SECTION "C"- "C"

PROPRIETARY NOTE
THIS DOCUMENT CONTAINS INFORMATION
CONFIDENTIAL AND PROPRIETARY TO
SAMTEC, INC. AND SHALL NOT BE REPRODUCED
OR TRANSFERRED TO OTHER DOCUMENTS OR
DISCLOSED TO OTHERS OR USED FOR ANY
PURPOSE OTHER THAN THAT WHICH IT WAS
OBTAINED WITHOUT THE EXPRESSED WRITTEN
CONSENT OF SAMTEC, INC.

DO NOT SCALE DRAWING

SHEET SCALE: 4:1

samtec

520 PARK EAST BLVD, NEW ALBANY, IN 47150
PHONE: 812-944-6733 FAX: 812-948-5047
e-Mail: info@SAMTEC.com code: 55322

DESCRIPTION:
2mm PRESS FIT SOCKET ASSEMBLY

DWG. NO.
PTF-1XX-XX-X-D-XXX

BY: KEVIN B 4/3/2000 SHEET 2 OF 2

Mouser Electronics

Authorized Distributor

Click to View Pricing, Inventory, Delivery & Lifecycle Information:

[Samtec:](#)

[PTF-123-01-S-D](#) [PTF-121-01-S-D](#)