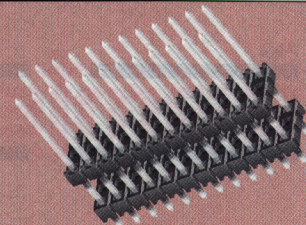
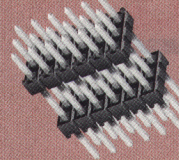


HW-14-08-S-S-400-100

ZW-06-10-G-T-450-230



DW-12-12-L-Q-400

Through  
**T/H**  
Hole

## BOARD STACKER DW, EW, ZW & HW SERIES



**Mates with:**  
SSW, SSQ, ESW, ESQ,  
CES, SLW, BSW, BCS,  
SSM, IDSS, IDSD, HLE

### SPECIFICATIONS

For complete specifications  
see [www.samtec.com?DW](http://www.samtec.com?DW),  
[www.samtec.com?EW](http://www.samtec.com?EW) or  
[www.samtec.com?ZW](http://www.samtec.com?ZW)

**Insulator Material:**  
Black Glass Filled  
Polyester



**Terminal Material:**  
Phosphor Bronze  
**Operating Temp  
Range:**

-65°C to +125°C with Gold  
-65°C to +105°C with Tin

**Plating:**  
Au or Sn over  
50µ" (1,27µm) Ni



### SPECIFICATIONS

For complete specifications  
see [www.samtec.com?HW](http://www.samtec.com?HW)

Same as ZW except:  
**Insulator Material:**  
Natural Liquid Crystal  
Polymer



**Max Processing  
Temp:**  
230°C for 60 seconds



#### TYPE STRIP

#### NO. PINS PER ROW

#### LEAD STYLE

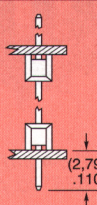
#### PLATING OPTION

#### ROW OPTION

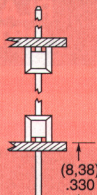
#### STACKER HEIGHT

#### OTHER OPTIONS

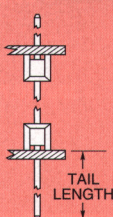
**DW**  
= (2,79mm)  
.110" Tail



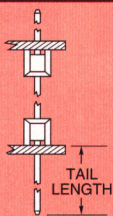
**EW**  
= (8,38mm)  
.330" Tail



**ZW**  
= Custom Tail



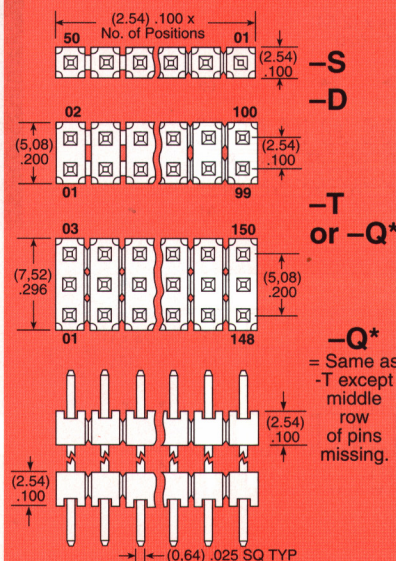
**HW**  
= High Temp  
Custom Tail



### Specify LEAD STYLE from chart

LEAD STYLE	OAL
-07	(10,92) .430
-08	(13,46) .530
-09	(18,54) .730
-10	(21,08) .830
-11	(23,62) .930
-12	(26,16) 1.030
-13	(31,24) 1.230
-14	(36,32) 1.430
-15	(16,00) .630
-16	(11,30) .445
-17	(12,19) .480
-19	(33,78) 1.330
-20	(28,70) 1.130

### 01 thru 50



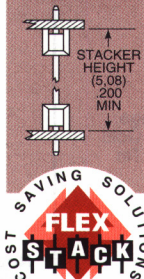
**-S**  
= Single  
Row

**-D**  
= Double  
Row

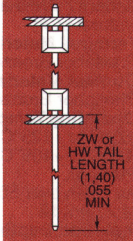
**-T**  
= Triple  
Row

**-Q**  
= Double  
Row .200"  
(5,08mm)  
row space

**"XXX"**  
= Stacker  
Height



**"XXX"**  
= ZW or HW  
Tail Length



**-LL**  
= Locking  
Lead

(Shortest  
dimension  
between the  
tail and the  
post is the  
end that will  
be crimped.  
Available  
on tails from  
(2,29) .090" to  
(10,16) .400"  
only.)  
Single row, 01  
& 02 positions  
& -Q row not  
available

**"XXX"**  
= Polarized

Specify omitted  
pin position

**-G**  
= 10µ" (0,25µm) Gold on contact  
area of longer tail,  
Gold flash on balance

**-F**  
= Gold flash on contact,  
Tin on tail

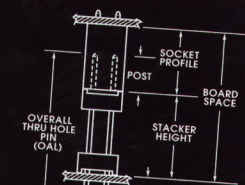
**-L**  
= 10µ" (0,25µm) Gold on contact  
area of longer tail,  
Tin on tail

**-S**  
= 30µ" (0,76µm) Gold on contact  
area of longer tail,  
Tin on tail

**-T**  
= Tin

### Board Stacking

Board Space  
= Socket Profile  
= Stacker Height



Due to technical progress, all designs, specifications and components are subject to change without notice.

**WWW.SAMTEC.COM**

**SAMTEC USA** • Tel: 1-800-SAMTEC-9 or 812-944-6733 • Fax: 812-948-5047  
**SAMTEC FRANCE** • Tel: 01 60 95 06 60 • Fax: 01 60 95 06 61  
**SAMTEC SCANDINAVIA** • Tel: +46-84477280 • Fax: +46-87420413  
**SAMTEC CHINA** • Tel: 86-21-5385-4089 • Fax: 86-21-5385-4047  
**SAMTEC HONG KONG** • Tel: 852-26904858 • Fax: 852-26904842  
**SAMTEC UK** • Tel: 01236 739292 • Fax: 01236 727113  
**SAMTEC ITALY** • Tel: 39 039 6890337 • Fax: 39 039 6890315  
**SAMTEC ASIA PACIFIC** • Tel: 65 6745-5955 • Fax: 65 6841-1502  
**SAMTEC TAIWAN** • Tel: 886-02-2364-6077 • Fax: 886-02-2367-9531  
**SAMTEC ANZ** • Tel: 613 9512 7747 • Fax: 613 9512 7745  
**SAMTEC GERMANY** • Tel: +49 (0) 89 / 89460-0 • Fax: +49 (0) 89 / 89460-299  
**SAMTEC ISRAEL** • Tel: 972-3-7526600 • Fax: 972-3-7526690  
**SAMTEC JAPAN** • Tel: 81-424-42-8318 • Fax: 81-424-42-8319



# Mouser Electronics

Authorized Distributor

Click to View Pricing, Inventory, Delivery & Lifecycle Information:

[Samtec:](#)

[HW-22-08-S-D-200-100](#)