

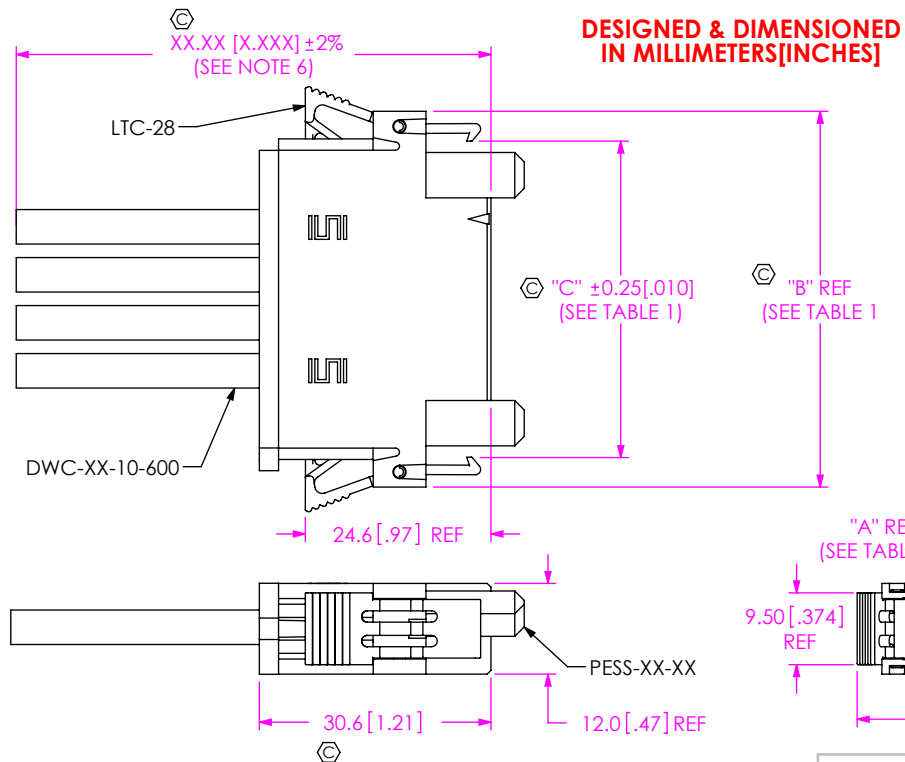
DO NOT
SCALE FROM
THIS PRINTFIG 1
(PESS-04-XX-X-XX.XX-SR SHOWN)

TABLE 1				
No. OF POS	"A"	"B"	"C"	"D"
-02	6.35 [0.250]	37.01 [1.457]	29.21 [1.150]	43.9 [1.73]
-04	19.05 [0.750]	49.71 [1.957]	41.91 [1.650]	56.6 [2.23]
-06	31.75 [1.250]	62.41 [2.457]	54.61 [2.150]	69.3 [2.73]
-08	44.45 [1.750]	75.11 [2.957]	67.31 [2.650]	82.0 [3.23]

NOTES:

1. \odot REPRESENTS A CRITICAL DIMENSION.
2. ALL ASSEMBLIES TO BE 100% HI-POT TESTED AT 1000V AND ELECTRICALLY TESTED FOR SHORTS AND OPENS. AFTER FINAL ELECTRICAL TEST, LABEL EACH ASSEMBLY WITH (1) ET STAMP ON THE BODY.
3. MINIMUM LATCH RETENTION: 4.4 N [1 LB].
4. MINIMUM PULL OUT FORCE 22.2N [5 LB].
5. PARTS TO BE LAYER PACKAGED; EACH END TO BE SEALED IN A BUBBLE BAG AS8BLT4X5.5.
6. ALL DIMS SHOWN IN METRIC EXCEPT FOR ASSEMBLY LENGTH ON PART CALL OUT.
7. NOTE DELETED.
8. CAP RETENTION: 4.4 N [1LB].
9. REFER TO CRIMP SPECIFICATIONS PRINT FOR CRIMP AND STRIP DIMENSIONS, TOLERANCES, TOOLING AND ITS REQUIREMENTS.
10. CUT LENGTH IS ASSEMBLY LENGTH MINUS OVERALL LENGTH SUBTRACTOR.

PESS-XX-XX-X-XX.XX-XX-XXX

No OF POSITIONS

- 02: 2 POSITIONS
- 04: 4 POSITIONS
- 06: 6 POSITIONS
- 08: 8 POSITIONS

LEAD STYLE

- 10: 10 AWG 600 V (C-310-1012-X)
- 12: 12 AWG 600 V (C-310-1012-X)

PLATING SPECIFICATION

- L: LIGHT SELECTIVE, 10Au / 50 Ni MIN ON CONTACT, MATTE TIN CRIMP
- S: SELECTIVE, 30Au / 50 Ni MIN ON CONTACT, MATTE TIN CRIMP
- T: MATTE TIN, 200 TIN / 50 Ni MIN ON CONTACT, MATTE TIN CRIMP

SECOND END OPTION

- (ONLY AVAILABLE WITH -DR OPTION)
- NUS: NOTCH UP STRAIGHT (SEE FIG 2, SHEET 2)
- NDS: NOTCH DOWN STRAIGHT (SEE FIG 3, SHEET 2)

END OPTION

- SR: SINGLE ENDED
- DR: DOUBLE ENDED

ASSEMBLY LENGTH

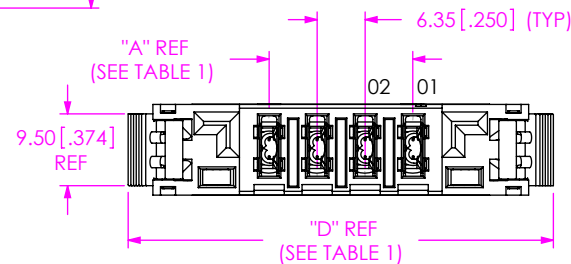
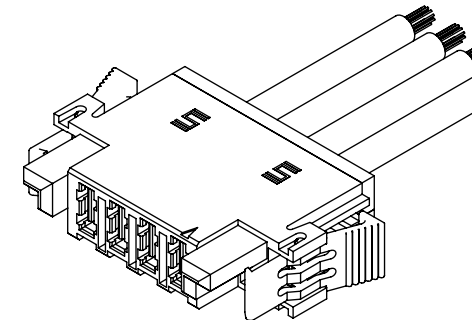
06.00[152.4] MINIMUM LENGTH
(SEE NOTE 6)

TABLE 2: OVERALL LENGTH SUBTRACTORS (SEE NOTE 10)		
SERIES	"E"	"F"
PESS	0.623	1.246

OVERALL LENGTH "E"
(SEE TABLE 2)OVERALL LENGTH "F"
(SEE TABLE 2)

-S: SINGLE END

-D: DOUBLE END

FIG 4
CABLE CUT IN-PROCESSUNLESS OTHERWISE SPECIFIED,
DIMENSIONS ARE IN MILLIMETERS.

TOLERANCES ARE:

DECIMALS ANGLES

X.X: ± 0.3 [.01] 2°

X.XX: ± 0.13 [.005]

X.XXX: ± 0.051 [.0020]

* PROPRIETARY NOTE *

THIS DOCUMENT CONTAINS CONFIDENTIAL AND PROPRIETARY INFORMATION AND ALL DESIGN, MANUFACTURING, REPRODUCTION, USE, PATENT RIGHTS AND SALES RIGHTS ARE EXPRESSLY RESERVED BY SAMTEC, INC. THIS DOCUMENT SHALL NOT BE DISCLOSED, IN WHOLE OR PART, TO ANY UNAUTHORIZED PERSON OR ENTITY NOR REPRODUCED, TRANSFERRED OR INCORPORATED IN ANY OTHER PROJECT IN ANY MANNER WITHOUT THE EXPRESS WRITTEN CONSENT OF SAMTEC, INC.

MATERIAL: DO NOT SCALE DRAWING

INSULATOR: NYLON, BLACK

CONTACT: COPPER ALLOY

LATCH: NYLON, BLACK

WIRE: PVC COATED TINNED COPPER

SHEET SCALE: 2:1

520 PARK EAST BLVD., NEW ALBANY, IN 47150
PHONE: 812-944-6733 FAX: 812-948-5047
e-Mail: info@SAMTEC.com code 55322

DESCRIPTION:

PESS CABLE ASSEMBLY

DWG. NO.

PESS-XX-XX-X-XX.XX-XX-XXX

BY: E WRIGHT 02/16/2010 SHEET 1 OF 2

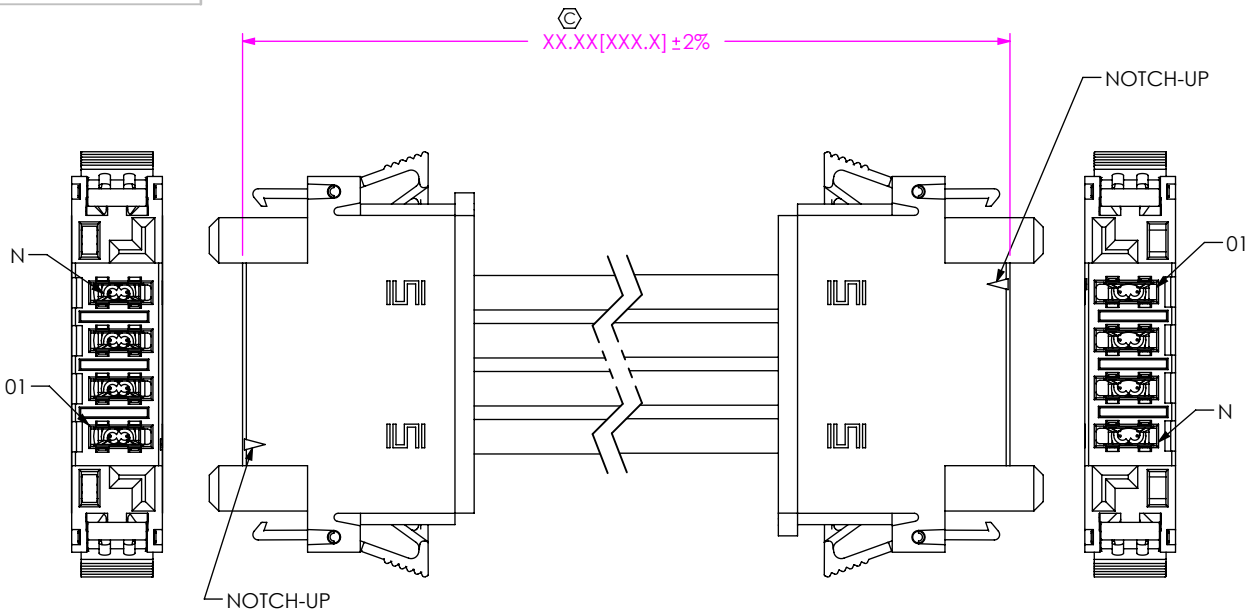


FIG 2
(PESS-04-XX-X-XX.XX-DR-NUS)
(SAME AS FIG 1, DIFFERENT AS SHOWN)

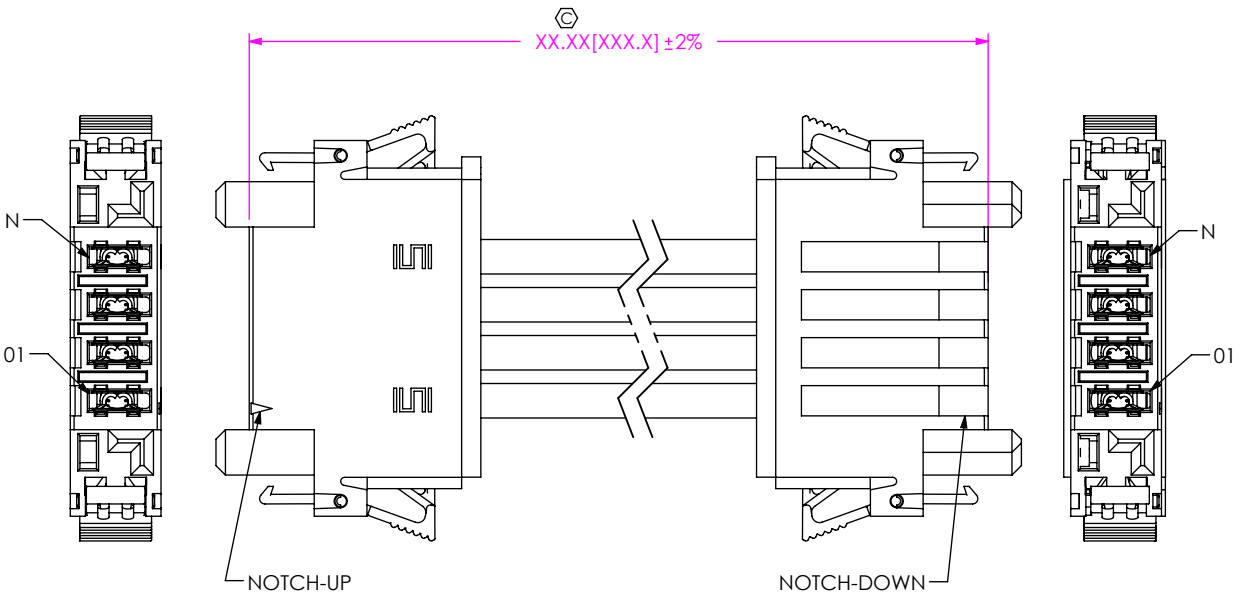
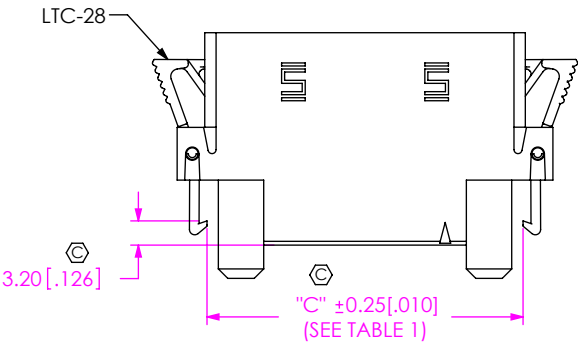
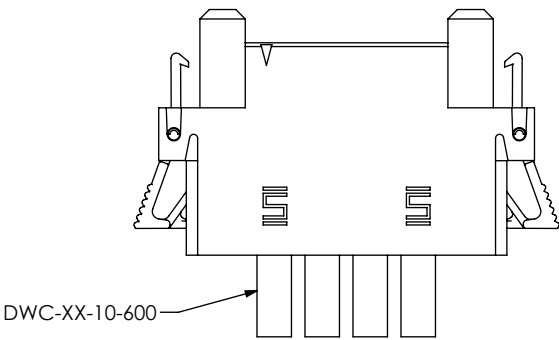


FIG 3
(PESS-04-XX-X-XX.XX-DR-NDS)
(SAME AS FIG 1, DIFFERENT AS SHOWN)

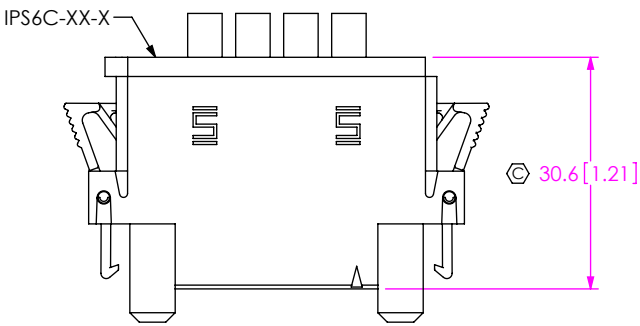
IN PROCESS 1
(ADD LTC-28)



IN PROCESS 2
(FILL DWC-XX-10-600)



IN PROCESS 3
(ADD IPS6C-XX-X)



PROPRIETARY NOTE
THIS DOCUMENT CONTAINS CONFIDENTIAL AND
PROPRIETARY INFORMATION AND ALL DESIGN,
MANUFACTURING, REPRODUCTION, USE, PATENT RIGHTS
AND SALES RIGHTS ARE EXPRESSLY RESERVED BY SAMTEC,
INC. THIS DOCUMENT SHALL NOT BE DISCLOSED, IN WHOLE
OR PART, TO ANY UNAUTHORIZED PERSON OR ENTITY NOR
REPRODUCED, TRANSFERRED OR INCORPORATED IN ANY
OTHER PROJECT IN ANY MANNER WITHOUT THE EXPRESS
WRITTEN CONSENT OF SAMTEC, INC.



520 PARK EAST BLVD, NEW ALBANY, IN 47150
PHONE: 812-944-6733 FAX: 812-948-5047
e-Mail: info@SAMTEC.com code 55322

DO NOT SCALE DRAWING

SHEET SCALE: 2:1

DESCRIPTION: PESS CABLE ASSEMBLY

DWG. NO. PESS-XX-XX-X-XX.XX-XX-XXX

BY: E WRIGHT 02/16/2010 SHEET 2 OF 2

Mouser Electronics

Authorized Distributor

Click to View Pricing, Inventory, Delivery & Lifecycle Information:

[Samtec:](#)

[PESS-08-10-L-36.00-DR-NDS](#) [PESS-08-10-L-60.00-DR-NDS](#)