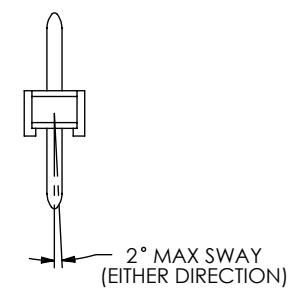
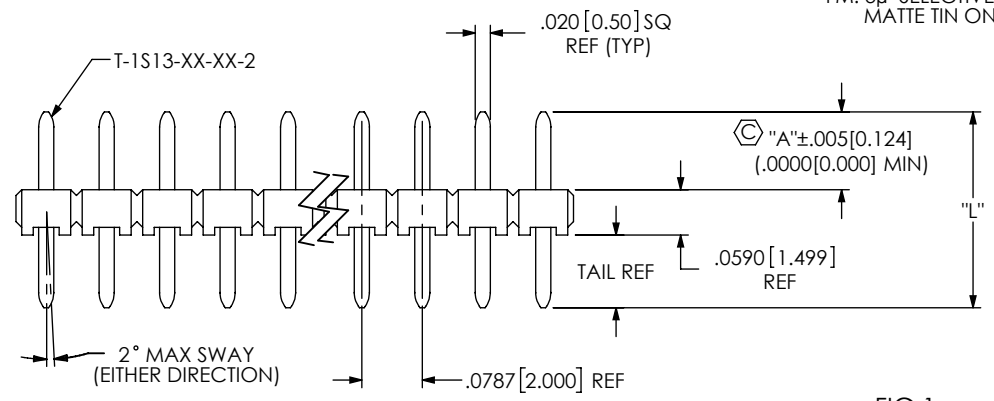
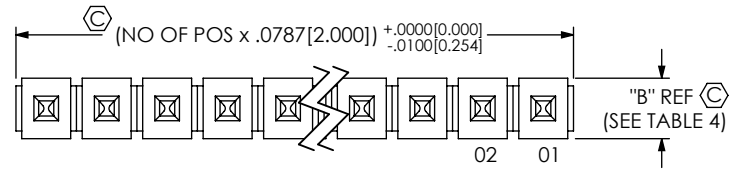


DO NOT SCALE FROM THIS PRINT

NOTES:

1. $\text{\textcircled{C}}$ REPRESENTS A CRITICAL DIMENSION.
2. MAXIMUM ALLOWABLE BOW: 0.005 [0.13] IN/IN AFTER ASSEMBLY.
3. MAXIMUM PIN ROTATION IN BODY: 2°
4. MINIMUM PUSHOUT FORCE: 1LB
5. CUT PARTS WITH METAL WASHERS TOWARDS OPERATOR ALLOWING FLASH TO BE ON POST AWAY FROM CRITICAL AREA (METAL WASHERS).
6. $\text{\textcircled{C}}$ INSERT PINS SO THAT BANDOLIERS MARKS ARE LIMITED IN THE POST AREA (SEE TABLE 3).



MTMM-1XX-XX-XX-X-XXX-XX-XXX

- No OF POSITIONS
-01 THRU -50
- TERMINAL SPEC
LEAD STYLE (SEE TABLE 1)
- PLATING SPECIFICATION
 - G: 20μ" SELECTIVE GOLD IN CONTACT AREA, 3μ" SELECTIVE GOLD ON TAIL.
 - T: MATTE TIN ON CONTACT AND TAIL.
 - S: 30μ" SELECTIVE GOLD IN CONTACT AREA, MATTE TIN ON TAIL.
 - L: 10μ" SELECTIVE GOLD IN CONTACT AREA, MATTE TIN ON TAIL.
 - F: 3μ" SELECTIVE GOLD IN CONTACT AREA, MATTE TIN ON TAIL.
 - H: 30μ" SELECTIVE GOLD IN CONTACT AREA, 3μ" SELECTIVE GOLD ON TAIL.
 - SM: 30μ" SELECTIVE GOLD IN CONTACT AREA, MATTE TIN ON TAIL.
 - TM: MATTE TIN ON CONTACT AND TAIL.
 - LM: 10μ" SELECTIVE GOLD IN CONTACT AREA, MATTE TIN ON TAIL.
 - FM: 3μ" SELECTIVE GOLD IN CONTACT AREA, MATTE TIN ON TAIL.
- OPTION
POLARIZATION
SPECIFY POS -XXX TO BE OMITTED
- OPTION
**-MW: METAL WASHER (-D & -Q BODY SPECS ONLY) (SEE FIG 4, SHT 2) (30 POS PER ROW MAX) TAIL MUST BE .090 [2.29] - .300 [7.62]
- POST HEIGHT
XXX = "A" (SEE TABLE 1)
- BODY SPECIFICATION
 - S: SINGLE (TMM-50-S, SEE FIG 1)
 - D: DOUBLE (TMM-50-D, SEE FIG 2, SHT 2)
 - Q: QUAD (TMM-50-Q, SEE FIG 3, SHT 2)


** -MW OPTION, DO NOT DESIGN IN. SAMTEC WILL ONLY SUPPORT EXISTING BUSINESS 02/08/2002

FIG 1
-S: SINGLE ROW OPTION
MTMM-1XX-02-XX-S-100 SHOWN

LEAD STYLE	"A" MAX	PIN LENGTH "L"	TERMINAL
-02	0.196 [4.98]	0.255 [6.48]	T-1S13-04-XX-2
-03	0.243 [6.17]	0.302 [7.67]	T-1S13-07-XX-2
-04	0.264 [6.71]	0.323 [8.20]	T-1S13-20-XX-2
-05	0.318 [8.08]	0.377 [9.58]	T-1S13-02-XX-2
-06	0.338 [8.59]	0.397 [10.08]	T-1S13-05-XX-2
*-07	0.397 [10.08]	0.456 [11.58]	T-1S13-13-XX-2
-08	0.417 [10.59]	0.476 [12.09]	T-1S13-08-XX-2
-09	0.476 [12.09]	0.535 [13.59]	T-1S13-03-XX-2
-10	0.496 [12.60]	0.555 [14.10]	T-1S13-06-XX-2
-11	0.535 [13.59]	0.594 [15.09]	T-1S13-09-XX-2
-12	0.555 [14.10]	0.614 [15.60]	T-1S13-14-XX-2
-13	0.614 [15.60]	0.673 [17.09]	T-1S13-10-XX-2
-14	0.692 [17.58]	0.751 [19.08]	T-1S13-11-XX-2
-15	0.771 [19.58]	0.830 [21.08]	T-1S13-12-XX-2

ROW	"B"
-S	.0787
-D	.1550
-Q	.3150

"A" MAX = "L"-.059 [1.50] (BODY) TAIL CAN BE .000
*FOR MTMM-1XX-07-X-X-275, USE T-1S13-32-XXX-2

UNLESS OTHERWISE SPECIFIED, DIMENSIONS ARE IN INCHES. TOLERANCES ARE: DECIMALS ANGLES .XX: ±.01 [0.3] 2° .XXX: ±.005 [0.13] .XXXX: ±.0020 [0.051]	* PROPRIETARY NOTE THIS DOCUMENT CONTAINS CONFIDENTIAL AND PROPRIETARY INFORMATION AND ALL DESIGN, MANUFACTURING, REPRODUCTION, USE, PATENT RIGHTS AND SALES RIGHTS ARE EXPRESSLY RESERVED BY SAMTEC, INC. THIS DOCUMENT SHALL NOT BE DISCLOSED, IN WHOLE OR PART, TO ANY UNAUTHORIZED PERSON OR ENTITY NOR REPRODUCED, TRANSFERRED OR INCORPORATED IN ANY OTHER PROJECT IN ANY MANNER WITHOUT THE EXPRESS WRITTEN CONSENT OF SAMTEC, INC.	 520 PARK EAST BLVD, NEW ALBANY, IN 47150 PHONE: 812-944-6733 FAX: 812-948-5047 e-Mail: info@SAMTEC.com code 53322

REVISION AH

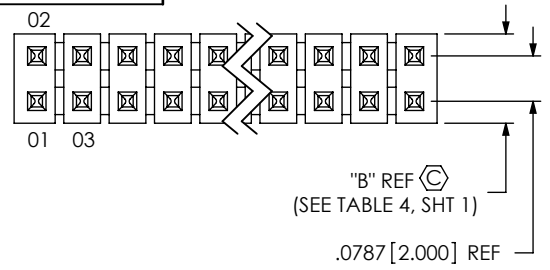


FIG 2
-D: DOUBLE ROW OPTION
MTMM-1XX-02-XX-D-100 SHOWN
(SAME AS FIG 1, DIFFERENT AS SHOWN)

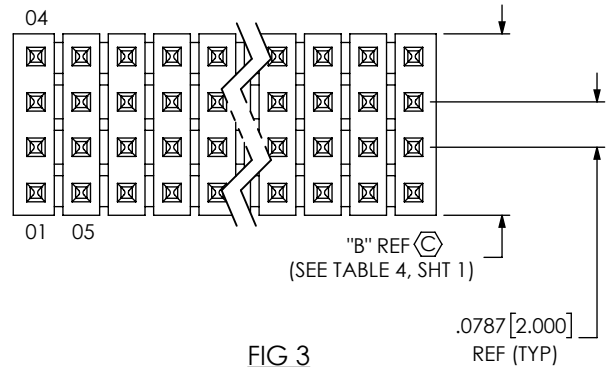


FIG 3
-Q: QUAD ROW OPTION
MTMM-1XX-02-XX-Q-100 SHOWN
(SAME AS FIG 1, DIFFERENT AS SHOWN)

PACKAGING TABLE 2 FOR -MW OPTION ONLY

BODY SPECIFICATION	LEAD STYLE	PKG TUBE	TUBE PLUG
-D	-02, -03, -04, -05, -06	PT-1-24-02-17	TP-09
	-07, -08, -09, -10,	PT-1-24-03-75	TP-03
	-11, -12, -13, -14	PT-1-24-02-48	TP-03
	-15	PT-1-24-02-47	TP-03
-Q	-02, -03, -04, -05, -06	PT-1-24-02-17	TP-09
	07, -08, -09	PT-1-24-01-40	TP-24
	-10, -11	PT-1-24-02-29	TP-24
	-12, -13, -14, -15	PT-1-24-02-51	TP-07

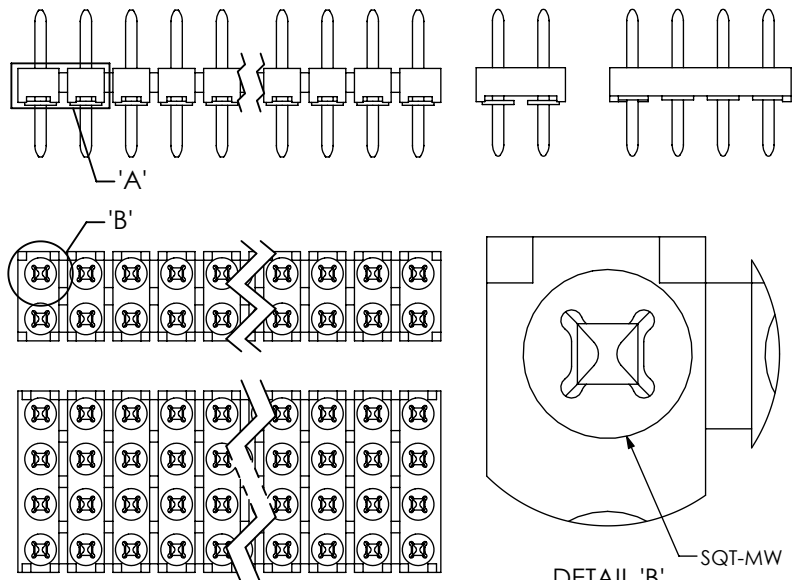
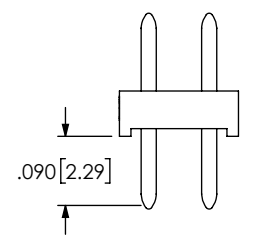
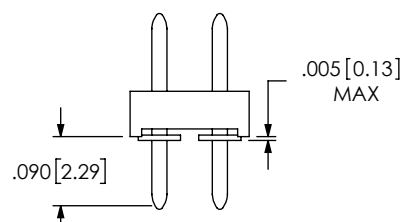


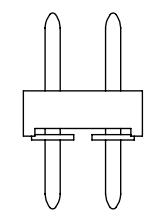
FIG 4
-MW: METAL WASHER OPTION
MTMM-1XX-02-XX-X-100-MW SHOWN
(ONE PER POSITION)
(-D & -Q BODY SPEC ONLY, SEE NOTE 5)
(SAME AS FIG 1, DIFFERENT AS SHOWN)
** -MW OPTION, DO NOT DESIGN IN. SAMTEC WILL ONLY SUPPORT EXISTING BUSINESS 02/08/2002



IN PROCESS 1
SCALE 4:1



IN PROCESS 2
SCALE 4:1

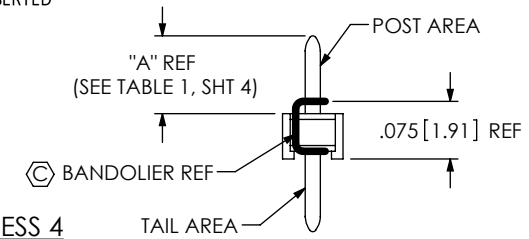


IN PROCESS 3
SCALE 4:1
REPRESS TO PROPER TAIL DIM

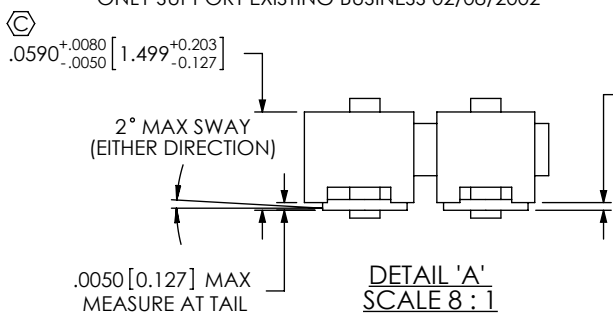
TABLE 3 (-T PLATING ONLY)

LEAD STYLE	MAX NUMBER OF BAND MARKS ALLOWED IN THE POST AREA			
	PIN A	PIN B	PIN C	PIN D
-02	1	1	1	1
-03	2	2	2	2
-04	2	2	2	2
-05	2	2	2	2
-06	2	2	2	2
-07	2	2	2	2
-08	2	2	2	2
-09	2	2	2	2
-10	2	2	2	2
-11	2	2	2	2
-12	2	2	2	2
*-13	2	2	2	2
*-14	2	2	2	2
-15	2	2	2	2

* = PINS TO BE FLIPPED OPPOSITE OF SELECTIVE PLATING BEFORE BEING INSERTED



IN PROCESS 4
(-T PLATING ONLY)
(SEE NOTE 6 & TABLE 3)



DETAIL 'A'
SCALE 8:1

.0050 [0.127] MAX
MEASURE AT TAIL

PROPRIETARY NOTE
THIS DOCUMENT CONTAINS CONFIDENTIAL AND PROPRIETARY INFORMATION AND ALL DESIGN, MANUFACTURING, REPRODUCTION, USE, PATENT RIGHTS AND SALES RIGHTS ARE EXPRESSLY RESERVED BY SAMTEC, INC. THIS DOCUMENT SHALL NOT BE DISCLOSED, IN WHOLE OR IN PART, TO ANY UNAUTHORIZED PERSON OR ENTITY NOR REPRODUCED, TRANSFERRED OR INCORPORATED IN ANY OTHER PROJECT IN ANY MANNER WITHOUT THE EXPRESS WRITTEN CONSENT OF SAMTEC, INC.

DO NOT SCALE DRAWING
SHEET SCALE: 3:1



DESCRIPTION: 2MM TERMINAL STRIP ASSEMBLY
DWG. NO. MTMM-1XX-XX-XX-X-XXX-XX-XXX
BY: REIDINGER 12/01/1993 SHEET 2 OF 2

Mouser Electronics

Authorized Distributor

Click to View Pricing, Inventory, Delivery & Lifecycle Information:

Samtec:

[MTMM-122-05-L-D-163](#) [MTMM-103-07-S-D-315](#) [MTMM-104-05-G-D-318](#) [MTMM-105-02-F-D-120](#) [MTMM-106-02-F-D-150](#) [MTMM-106-10-T-S-400](#) [MTMM-102-03-L-D-185](#) [MTMM-150-07-T-S-300](#) [MTMM-113-08-F-S-320](#) [MTMM-114-05-L-Q-190](#) [MTMM-116-15-T-S-196](#) [MTMM-118-06-G-D-120](#) [MTMM-120-09-T-D-334](#) [MTMM-130-02-L-D-125](#) [MTMM-110-03-T-S-126](#) [MTMM-110-04-L-S-180](#) [MTMM-110-06-F-S-250](#) [MTMM-110-07-L-D-300](#) [MTMM-110-09-F-S-360](#) [MTMM-112-05-F-S-197](#) [MTMM-106-07-L-S-270](#) [MTMM-106-15-F-D-365](#) [MTMM-108-03-L-D-110](#) [MTMM-108-04-F-D-126](#) [MTMM-108-04-F-D-150](#) [MTMM-108-05-L-D-197](#) [MTMM-104-06-F-D-005](#) [MTMM-104-12-L-D-200-001](#) [MTMM-104-13-F-D-515](#) [MTMM-105-03-F-D-130](#) [MTMM-105-15-T-D-700](#) [MTMM-106-05-T-D-160](#) [MTMM-103-04-L-D-236](#) [MTMM-103-05-F-D-150](#) [MTMM-103-05-F-D-190](#) [MTMM-103-09-F-D-360](#) [MTMM-104-04-F-D-150](#) [MTMM-104-05-F-S-150](#) [MTMM-105-04-L-S-157](#) [MTMM-105-05-F-S-154](#) [MTMM-107-09-L-D-375](#) [MTMM-102-04-L-S-160](#) [MTMM-102-05-L-D-195](#) [MTMM-103-03-F-S-138](#) [MTMM-102-15-T-D-075](#) [MTMM-105-08-F-D-320](#) [MTMM-108-05-F-D-230](#) [MTMM-102-04-F-S-150](#) [MTMM-102-05-L-S-180](#) [MTMM-104-04-F-S-150](#)