

REVISION P

DO NOT
SCALE FROM
THIS PRINT

PATENT NUMBERS

6979238 / 7137832
6969286 / 7178232
7159312 / 7172438
7052337 / 7125293

DPAM-XX-XX.X-X-X-X-XX

No OF POSITIONS

□-04, □-06, -08, -15, -23, ***□-30
(PER ROW)

LEAD STYLE

-07.0: (SEE TABLE 3)
*-09.0: (SEE TABLE 6, SHT3)
-11.0: (SEE TABLE 6, SHT3)
-14.0: (SEE TABLE 6, SHT3)
*-17.0: (SEE TABLE 6, SHT3)

PLATING SPECIFICATION

**-H: 30μ" GOLD IN CONTACT
AREA, MATT TIN ON TAIL
-S: 30μ" GOLD IN CONTACT
AREA, MATTE TIN ON TAIL.

OPTION

-A: ALIGNMENT PIN
(SEE FIG. 3, SHT 4)
-K: KAPTON PAD
(SEE FIG. 4, SHT 4)
-TR: TAPE & REEL
(LEAVE BLANK FOR TRAYS)
***□-GP: GUIDE POST
(SEE FIG. 5, SHT 5)
(ONLY AVAILABE WITH -07.0
LEAD STYLE)

SOLDER CRIMP MATERIAL

-1: 63%TIN/37%LEAD
(USE SUB-T-1M26-07.0-X-01 OR
USE SUB-T-1M32-XX.X-X-1)
-2: 96.5% TIN/3.5% SILVER
(USE SUB-T-1M26-07.0-X-02 OR
USE SUB-T-1M32-XX.X-X-2)

ROW

-8: 8 DIFFERENTIAL PAIR ROWS
□-3: 3 DIFFERENTIAL PAIR ROWS* = NOT TOOLED
□ = ONLY AVAILABLE WITH -07.0 LEAD STYLE
□ = ONLY AVAILABLE IN 3 ROW WITH -07.0 LEAD
STYLE & 23 POSITIONS
** = FOR EXISTING CUSTOMER ONLY
*** = NOT RELEASED FOR PRODUCTION

TABLE 1 - ARRAY SIZE TABLE

SIZE	DIFFERENTIAL PAIRS PER ARRAY (ROW)	
	-3	-8
-04	6 PAIRS	16 PAIRS
-06	12 PAIRS	32 PAIRS
-08	18 PAIRS	48 PAIRS
-15	39 PAIRS	104 PAIRS
-23	63 PAIRS	168 PAIRS
***-30	84 PAIRS	N/A

TABLE 2
STACK HEIGHT

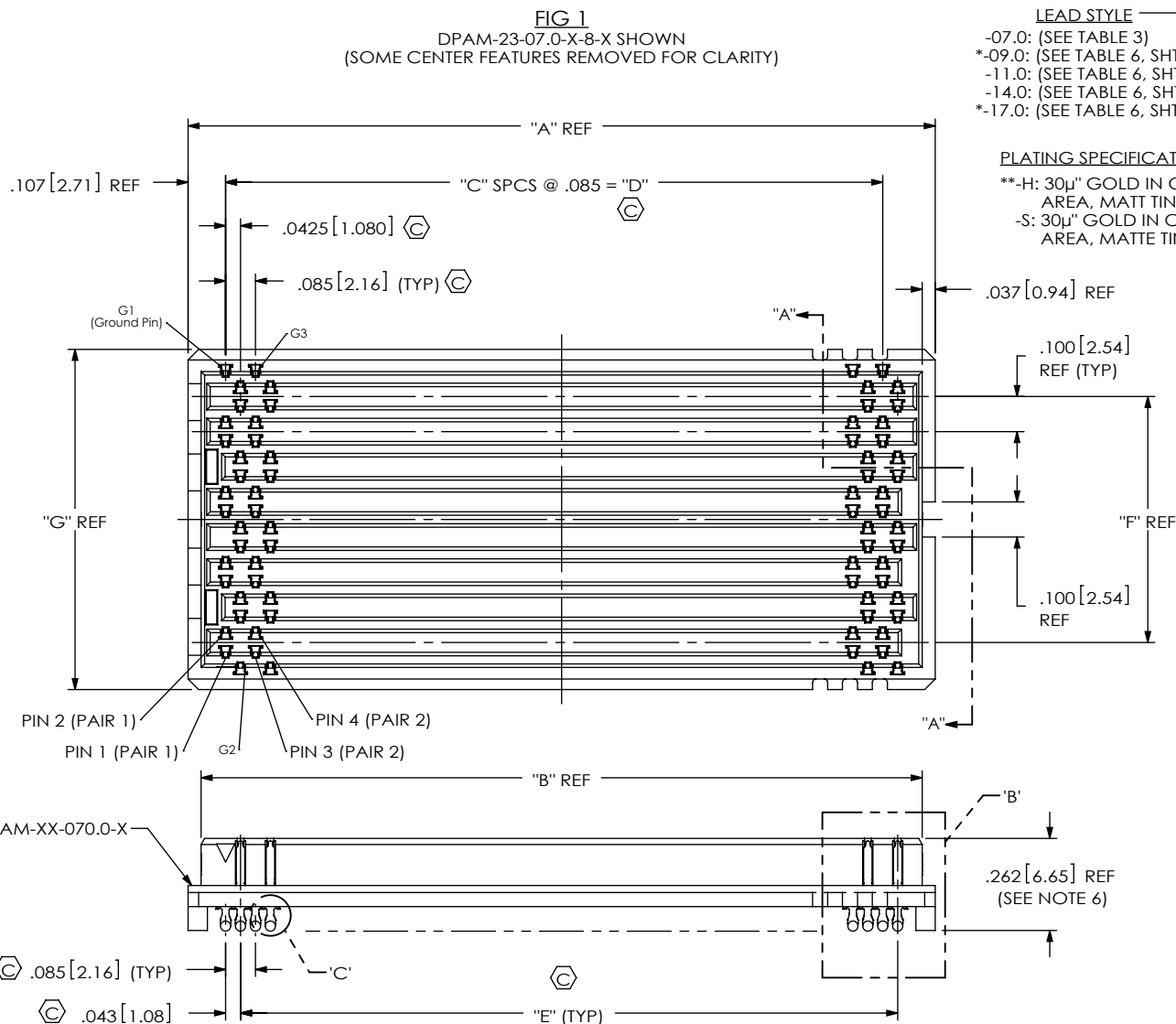
DPAF LEAD STYLE	DPAM LEAD STYLE				
	-07.0	*-09.0	-11.0	-14.0	*-17.0
-03.0	10mm	12mm	14mm	17mm	20mm

(* = NOT TOOLED)

TABLE 3

STYLE	BODY CALLOUT	TERMINAL CALLOUT
-07.0	DPAM-XX-07.0-XX-XX	SUB-T-1M26-07.0-X-XX

(SEE SHEET 2 FOR LEAD STYLE -09.0 THRU -17.0)



NOTES:

1. REPRESENTS A CRITICAL DIMENSION.
2. MINIMUM PUSHOUT FORCE: .5 LBS.
3. PARTS PACKAGED IN TRAYS IF -TR OPTION IS NOT SELECTED
4. SOLDER CRIMP LOCATION MUST BE VERIFIED ON 6 CONSECUTIVE PINS.
5. SEE RECOMMENDED FOOTPRINT DRAWING FOR STENCIL REQUIREMENTS.
6. MEASURE ON ALL 4 CORNERS OF THE ASSEMBLY, INCLUDING ADJACENT ROW.
7. DIMENSION TO BE CHECKED AT TIPS

(SEE SHEET 2 FOR BOTTOM VIEW)

UNLESS OTHERWISE SPECIFIED,
DIMENSIONS ARE IN INCHES.

TOLERANCES ARE:

DECIMALS ANGLES
.XX: ±.01 [.3] 2°
.XXX: ±.005 [.13]
.XXXX: ±.0020 [.050]

PROPRIETARY NOTE

THIS DOCUMENT CONTAINS CONFIDENTIAL AND
PROPRIETARY INFORMATION AND ALL DESIGN,
MANUFACTURING, REPRODUCTION, USE, PATENT RIGHTS
AND SALES RIGHTS ARE EXPRESSLY RESERVED BY SAMTEC,
INC. THIS DOCUMENT SHALL NOT BE DISCLOSED, IN WHOLE
OR PART, TO ANY UNAUTHORIZED PERSON OR ENTITY NOR
REPRODUCED, TRANSFERRED OR INCORPORATED IN ANY
OTHER PROJECT IN ANY MANNER WITHOUT THE EXPRESS
WRITTEN CONSENT OF SAMTEC, INC.MATERIAL: DO NOT SCALE DRAWING
INSULATOR: L.C.P., COLOR: BLACK
TERMINAL: COPPER ALLOY

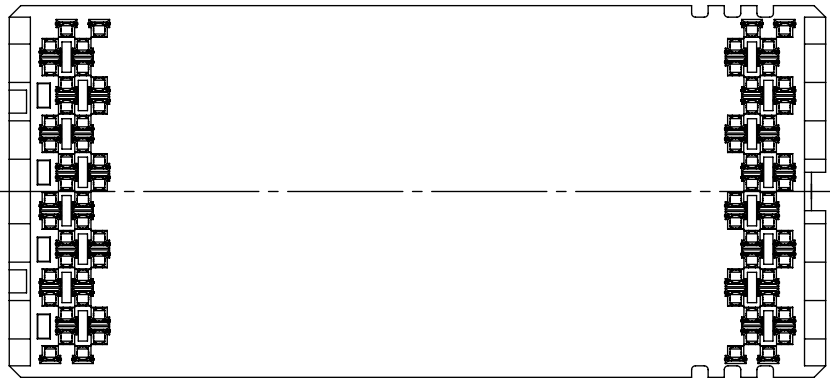
SHEET SCALE: 2:1

samtec520 PARK EAST BLVD, NEW ALBANY, IN 47150
PHONE: 812-944-6733 FAX: 812-948-5047
e-Mail: info@SAMTEC.com code 55322DESCRIPTION:
.085 PITCH DP TERMINAL ASSEMBLY
DWG. NO.

DPAM-XX-XX.X-X-X-X-XX

BY: CHAD F 6/3/2003 SHEET 1 OF 5

F:\DWG\MISC\MKTG\DPAM-XX-XX.X-X-X-XX-MKT.SLDDRW



(BOTTOM VIEW PROJECTED FROM SHEET 1)
(SOME CENTER FEATURES REMOVED FOR CLARITY)

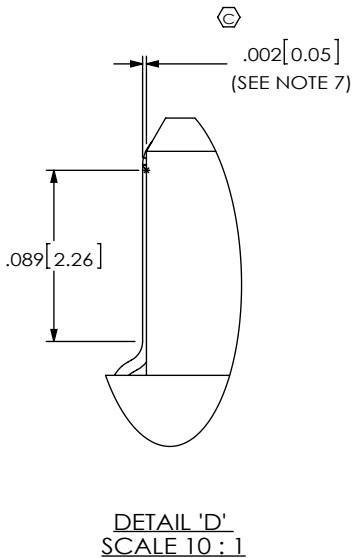
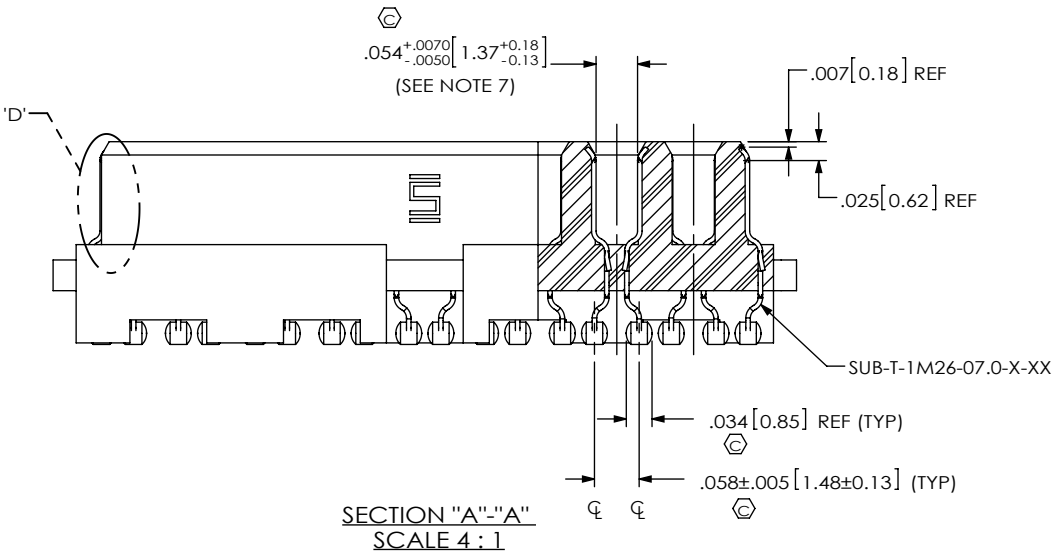
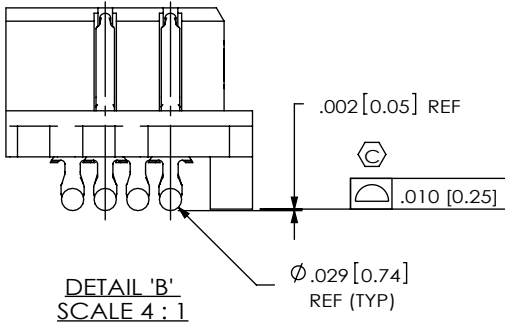
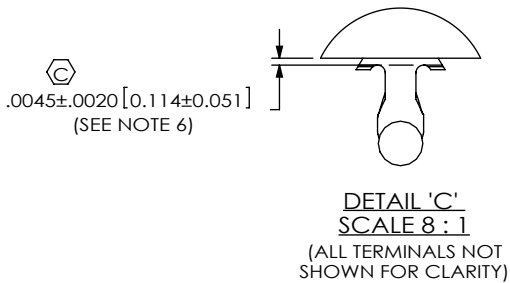


TABLE 4					
No. OF POS	"A"	"B"	"C"	"D"	"E"
-04	.511 [12.98]	.437 [11.10]	3	.255 [6.48]	.255 [6.48]
-06	.681 [17.30]	.607 [15.42]	5	.425 [10.80]	.425 [10.80]
-08	.851 [21.62]	.777 [19.74]	7	.595 [15.11]	.595 [15.11]
-15	1.446 [36.73]	1.372 [34.85]	14	1.190 [30.23]	1.190 [30.23]
-23	2.126 [54.00]	2.052 [52.12]	22	1.870 [47.50]	1.870 [47.50]
-30	2.721 [69.11]	2.647 [67.23]	29	2.465 [62.61]	2.465 [62.61]


TABLE 5		
ROW	"F"	"G"
-3	.200 [5.08]	.468 [11.89]
-8	.700 [17.78]	.968 [24.59]

*
 PROPRIETARY NOTE
 *

THIS DOCUMENT CONTAINS CONFIDENTIAL AND PROPRIETARY INFORMATION AND ALL DESIGN, MANUFACTURING, REPRODUCTION, USE, PATENT RIGHTS AND SALES RIGHTS ARE EXPRESSLY RESERVED BY SAMTEC, INC. THIS DOCUMENT SHALL NOT BE DISCLOSED, IN WHOLE OR PART, TO ANY UNAUTHORIZED PERSON OR ENTITY NOR REPRODUCED, TRANSFERRED OR INCORPORATED IN ANY OTHER PROJECT IN ANY MANNER WITHOUT THE EXPRESS WRITTEN CONSENT OF SAMTEC, INC.

DO NOT SCALE DRAWING

SHEET SCALE: 2:1



520 PARK EAST BLVD, NEW ALBANY, IN 47150
 PHONE: 812-944-6733 FAX: 812-948-5047
 e-Mail info@SAMTEC.com code 55322

DESCRIPTION:
.085 PITCH DP TERMINAL ASSEMBLY

DWG. NO.
DPAM-XX-XX.X-X-X-X-XX

BY: CHAD F 6/3/2003 SHEET 2 OF 5

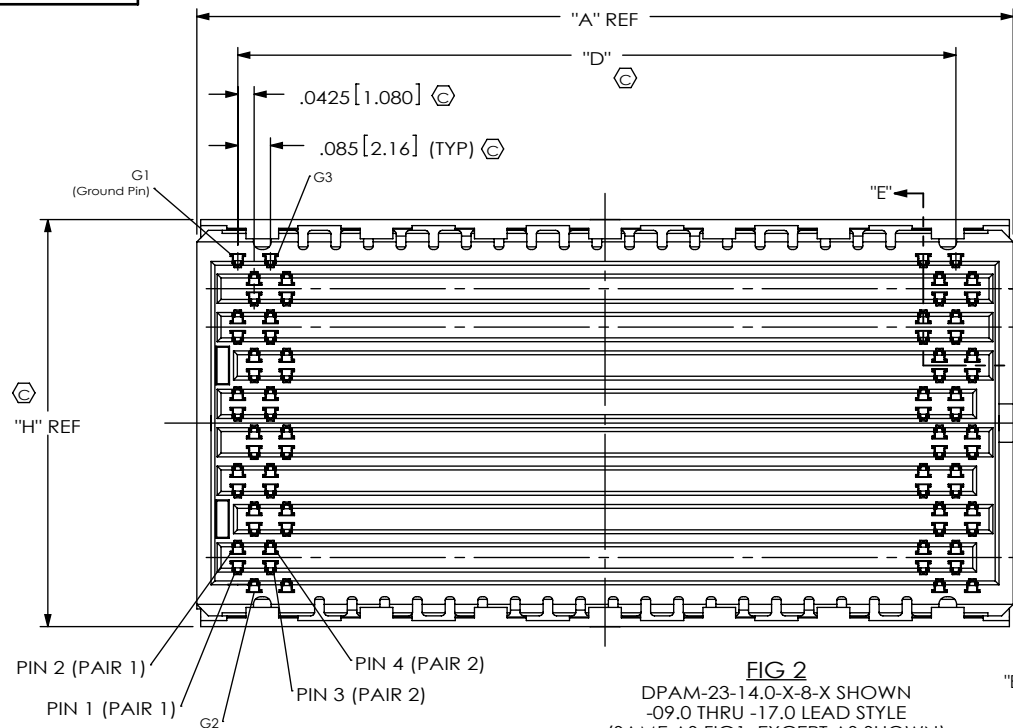


FIG 2
DPAM-23-14.0-X-8-X SHOWN
-09.0 THRU -17.0 LEAD STYLE
(SAME AS FIG 1, EXCEPT AS SHOWN)
(SOME CENTER FEATURES REMOVED FOR CLARITY)

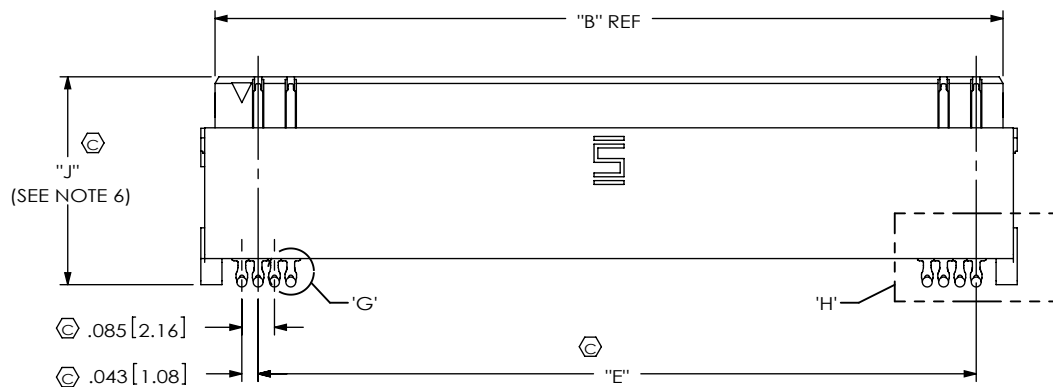


TABLE 7	
ROW	"H"
*-3	.560 [14.22]
-8	1.060 [26.92]

(* =NOT TOOLED)

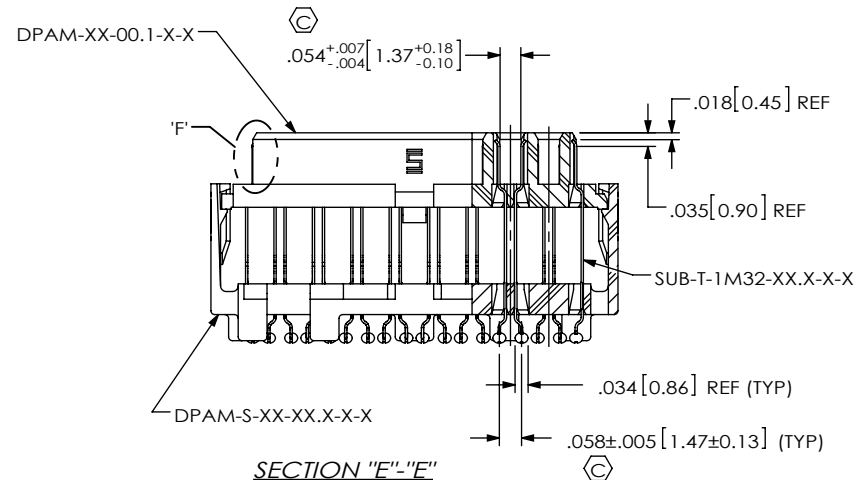
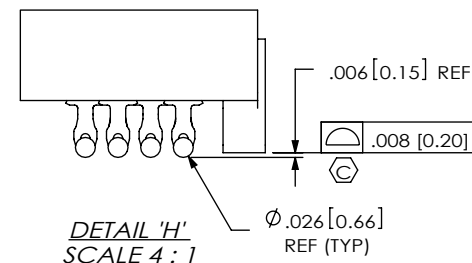
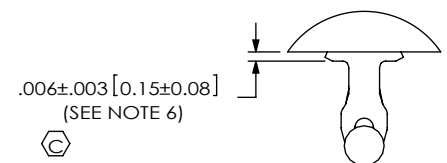


TABLE 6				
STYLE	"J"	SPACER BODY CALLOUT	BODY CALLOUT	TERMINAL CALLOUT
*-09.0	.342 [8.69]	DPAM-S-XX-09.0-X-X	DPAM-XX-00.1-X-X	SUB-T-1M32-09.0-X-X
-11.0	.422 [10.72]	DPAM-S-XX-11.0-X-X	DPAM-XX-00.1-X-X	SUB-T-1M32-11.0-X-X
-14.0	.538 [13.67]	DPAM-S-XX-14.0-X-X	DPAM-XX-00.1-X-X	SUB-T-1M32-14.0-X-X
*-17.0	.656 [16.66]	DPAM-S-XX-17.0-X-X	DPAM-XX-00.1-X-X	SUB-T-1M32-17.0-X-X

(* NOT TOOLED)

F:\DWG\MISC\MKTG\DPAM-XX-XX.X-X-X-MKT.SLDDRW

<p>PROPRIETARY NOTE</p> <p>THIS DOCUMENT CONTAINS CONFIDENTIAL AND PROPRIETARY INFORMATION AND ALL DESIGN, MANUFACTURING, REPRODUCTION, USE, PATENT RIGHTS AND SALES RIGHTS ARE EXPRESSLY RESERVED BY SAMTEC, INC. THIS DOCUMENT SHALL NOT BE DISCLOSED, IN WHOLE OR PART, TO ANY UNAUTHORIZED PERSON OR ENTITY NOR REPRODUCED, TRANSFERRED OR INCORPORATED IN ANY OTHER PROJECT IN ANY MANNER WITHOUT THE EXPRESS WRITTEN CONSENT OF SAMTEC, INC.</p> <p>DO NOT SCALE DRAWING</p> <p>SHEET SCALE: 2:1</p>		<p>samtec</p> <p>520 PARK EAST BLVD, NEW ALBANY, IN 47150 PHONE: 812-944-6733 FAX: 812-948-5047 e-Mail: info@SAMTEC.com code 55322</p>
		<p>DESCRIPTION: .085 PITCH DP TERMINAL ASSEMBLY</p>
		<p>DWG. NO. DPAM-XX-XX.X-X-X-X-XX</p>
		<p>BY: CHAD F 6/3/2003 SHEET 3 OF 5</p>

FIG 3
DPAM-23-07.0-X-8-1-A SHOWN
(SAME AS FIG 1, EXCEPT AS SHOWN)
(SOME CENTER FEATURES REMOVED FOR CLARITY)



TABLE 8	
No. OF POS	"K"
-04	.456 [11.58]
-06	.626 [15.90]
-08	.796 [20.22]
-15	1.391 [35.33]
-23	2.071 [52.60]
***-30	2.666 [67.72]

(** = NOT RELEASED
FOR PRODUCTION)

TABLE 9	
ROW	"L"
-3	.165 [4.19]
-8	.234 [5.94]

FIG 4
DPAM-23-07.0-X-8-X-A-K SHOWN
(SAME AS FIG 1, EXCEPT AS SHOWN)
(SOME CENTER FEATURES REMOVED FOR CLARITY)

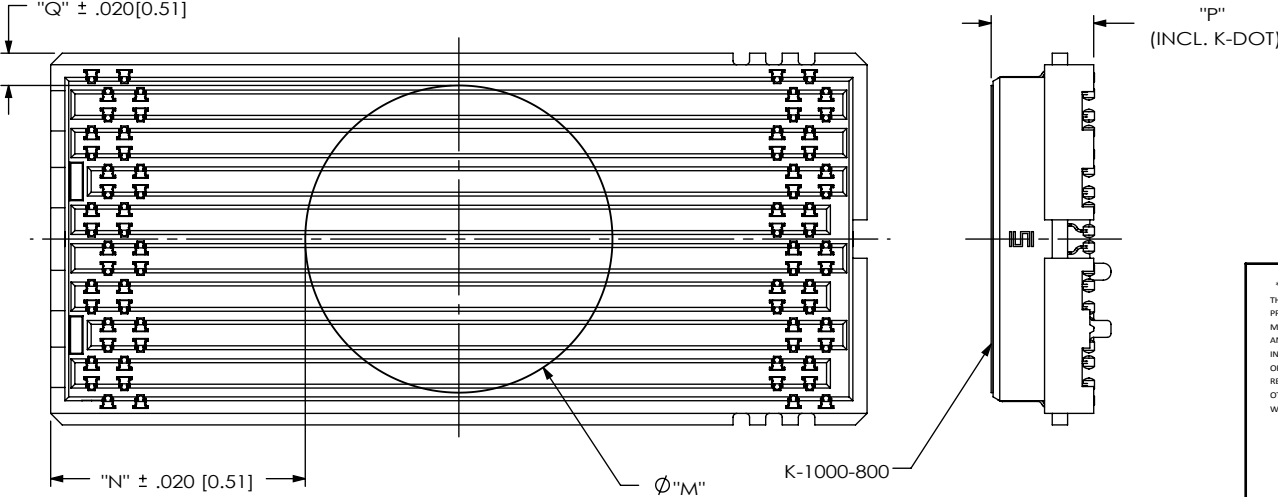


TABLE 10								
ROW	Ø "M"	"Q"	"N"					
			-04 POS	-06 POS	-08 POS	-15 POS	-23 POS	-30 POS
-3	.295 [7.50]	.0865 [2.197]	.106 [2.69]	.191 [4.85]	.276 [7.01]	.574 [14.57]	.914 [23.20]	1.211 [30.76]
-8	.295 [7.50]	.3365 [8.547]	.106 [2.69]	.191 [4.85]	N/A	N/A	N/A	N/A
-8	.788 [20.00]	.0900 [2.286]	N/A	N/A	.026 [0.66]	.324 [8.22]	.664 [16.85]	.961 [24.41]

TABLE 11	
STYLE	"P"
-07.0	.267 [6.78]
*-09.0	.347 [8.81]
-11.0	.427 [10.85]
-14.0	.543 [13.79]
*-17.0	.661 [16.79]

(* = NOT TOOLED)

PROPRIETARY NOTE
THIS DOCUMENT CONTAINS CONFIDENTIAL AND
PROPRIETARY INFORMATION AND ALL DESIGN,
MANUFACTURING, REPRODUCTION, USE, PATENT RIGHTS
AND SALES RIGHTS ARE EXPRESSLY RESERVED BY SAMTEC,
INC. THIS DOCUMENT SHALL NOT BE DISCLOSED, IN WHOLE
OR PART, TO ANY UNAUTHORIZED PERSON OR ENTITY NOR
REPRODUCED, TRANSFERRED OR INCORPORATED IN ANY
OTHER PROJECT IN ANY MANNER WITHOUT THE EXPRESS
WRITTEN CONSENT OF SAMTEC, INC.

DO NOT SCALE DRAWING

SHEET SCALE: 2:1

samtec

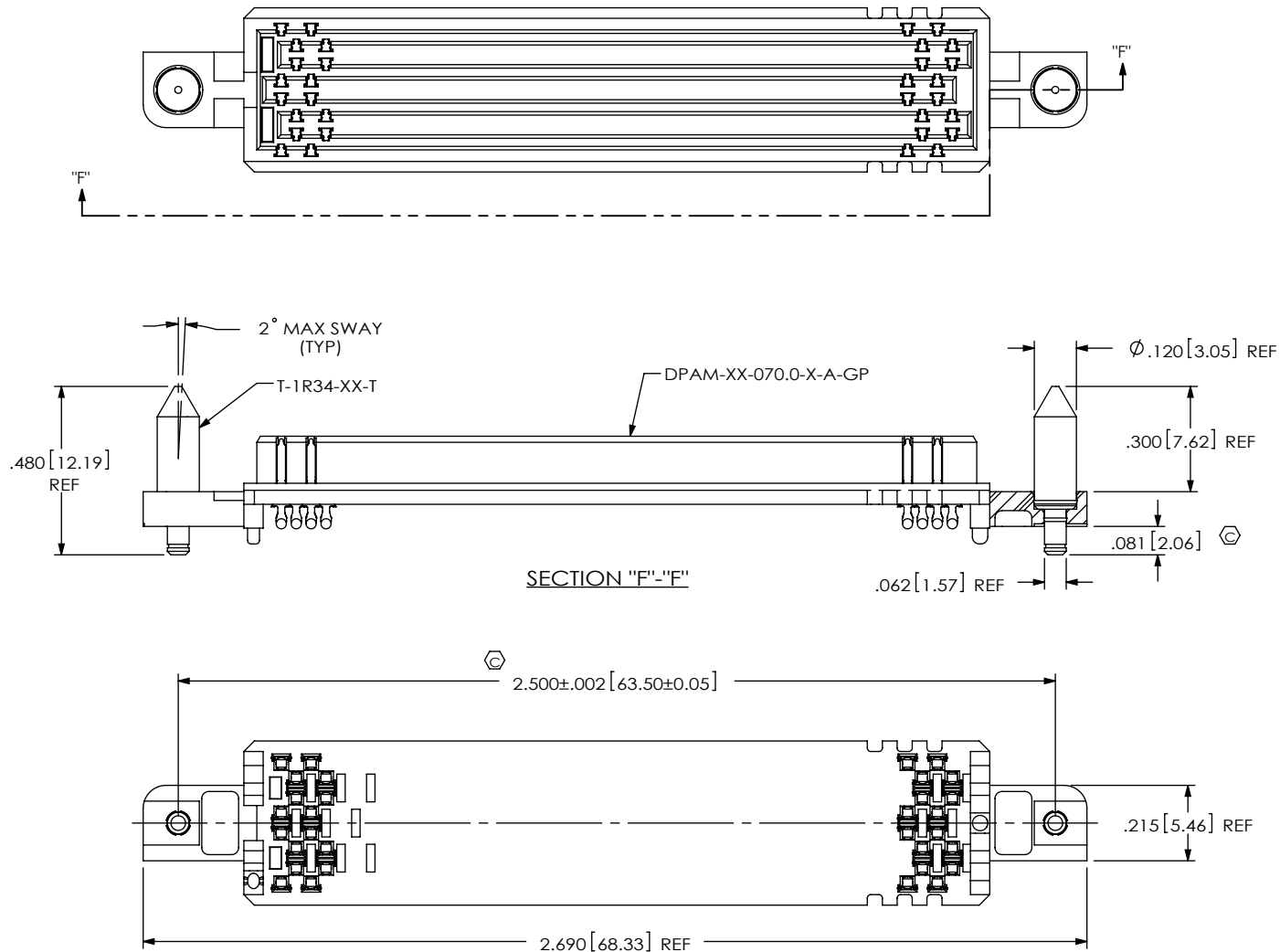
520 PARK EAST BLVD. NEW ALBANY, IN 47150
PHONE: 812-944-6733 FAX: 812-948-5047
e-Mail: info@SAMTEC.com code 55322

DESCRIPTION:
.085 PITCH DP TERMINAL ASSEMBLY

DWG. NO.
DPAM-XX-XX.X-X-X-X-XX

BY: CHAD F 6/3/2003 SHEET 4 OF 5

FIG 5
 *** DPAM-23-07.0-X-3-X-A-GP SHOWN
 (ONLY AVAILABLE ON 3 ROW, 23 POSITIONS)
 (SAME AS FIG 1, EXCEPT AS SHOWN)
 (SOME CENTER FEATURES REMOVED FOR CLARITY)
 *** = NOT RELEASED FOR PRODUCTION



<p>PROPRIETARY NOTE</p> <p>THIS DOCUMENT CONTAINS CONFIDENTIAL AND PROPRIETARY INFORMATION AND ALL DESIGN, MANUFACTURING, REPRODUCTION, USE, PATENT RIGHTS AND SALES RIGHTS ARE EXPRESSLY RESERVED BY SAMTEC, INC. THIS DOCUMENT SHALL NOT BE DISCLOSED, IN WHOLE OR PART, TO ANY UNAUTHORIZED PERSON OR ENTITY NOR REPRODUCED, TRANSFERRED OR INCORPORATED IN ANY OTHER PROJECT IN ANY MANNER WITHOUT THE EXPRESS WRITTEN CONSENT OF SAMTEC, INC.</p> <p>DO NOT SCALE DRAWING</p> <p>SHEET SCALE: 2:1</p>	<p>samtec</p> <p>520 PARK EAST BLVD, NEW ALBANY, IN 47150 PHONE: 812-944-6733 FAX: 812-948-5047 e-Mail info@SAMTEC.com code 55322</p> <p>DESCRIPTION: .085 PITCH DP TERMINAL ASSEMBLY</p> <p>DWG. NO. DPAM-XX-XX.X-X-X-X-XX</p> <p>BY: CHAD F 6/3/2003 SHEET 5 OF 5</p>
--	--

Mouser Electronics

Authorized Distributor

Click to View Pricing, Inventory, Delivery & Lifecycle Information:

[Samtec:](#)

[DPAM-23-14.0-S-8-2-A](#)